

# 6570 DOBBIN ROAD

Columbia, Maryland 21045  
Howard County



## NEARBY AMENITIES:



LOYOLA  
UNIVERSITY MARYLAND



*Wegmans*

- 1,400 - 2,900 square feet
- Exterior signage potential
- Recognizable Dobbin Road address
- Open floor plan with exposed ceiling
- Two restrooms
- Two exterior doors into the space

Chuck Breitenother  
cbreitenother@klnb.com  
443-574-1422

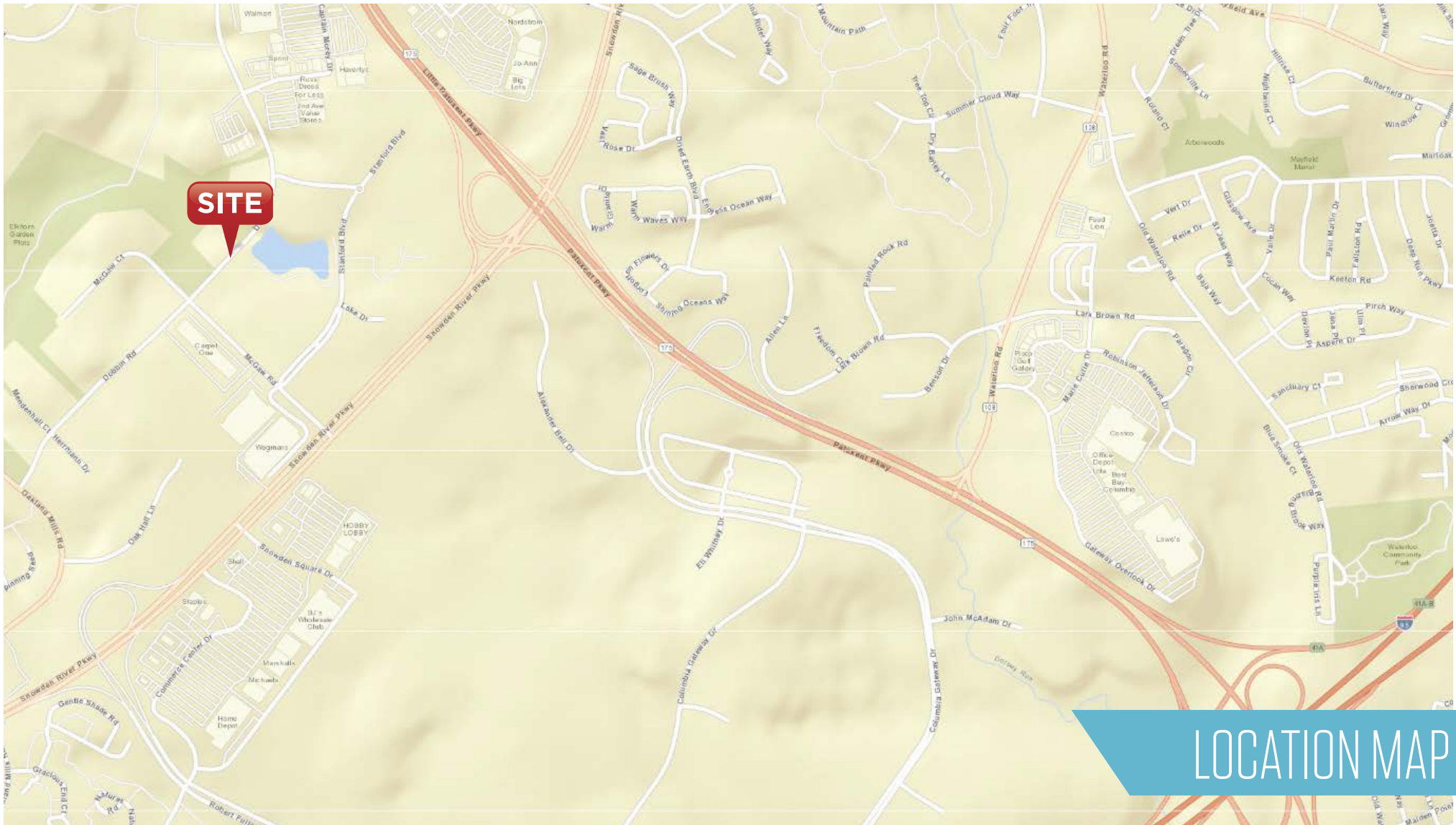
Dave Fritz, CCIM, SIOR  
dfritz@klnb.com  
443-574-1410

6011 University Blvd, Suite 350  
Ellicott City, MD 21043  
klnb.com

**NA**klnb

# 6570 DOBBIN ROAD

Columbia, Maryland 21045  
Howard County



LOCATION MAP

**Chuck Breitenother**  
cbreitenother@klnb.com  
443-574-1422

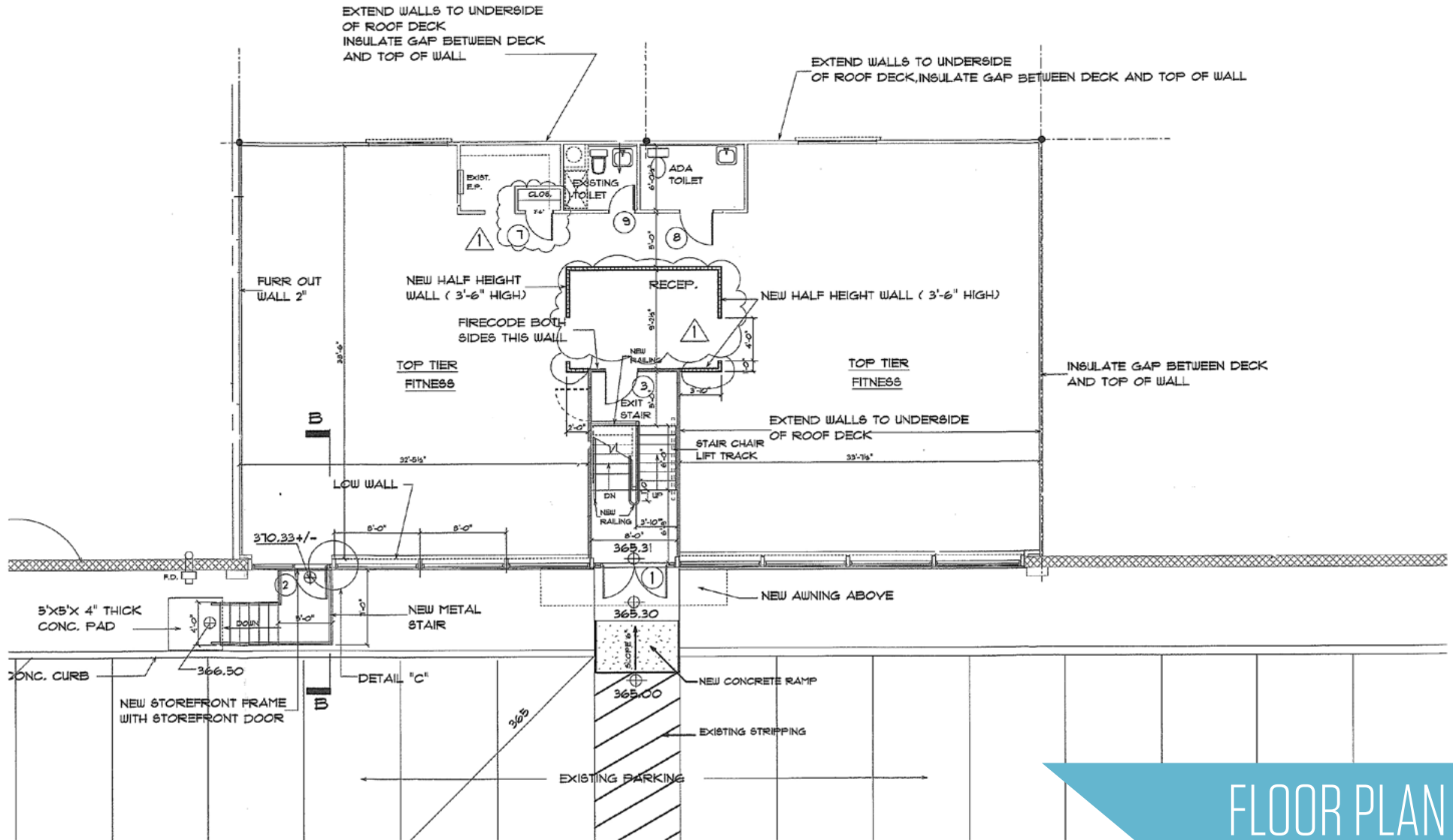
**Dave Fritz, CCIM, SIOR**  
dfritz@klnb.com  
443-574-1410

6011 University Blvd, Suite 350  
Ellicott City, MD 21043  
[klnb.com](http://klnb.com)



# 6570 DOBBIN ROAD

Columbia, Maryland 21045  
Howard County



FLOOR PLAN

Chuck Breitenother  
cbreitenother@klnb.com  
443-574-1422

Dave Fritz, CCIM, SIOR  
dfritz@klnb.com  
443-574-1410

6011 University Blvd, Suite 350  
Ellicott City, MD 21043  
klnb.com

**NA**klnb

# 6570 DOBBIN ROAD

Columbia, Maryland 21045  
Howard County



PHOTOS

**Chuck Breitenother**  
cbreitenother@klnb.com  
443-574-1422

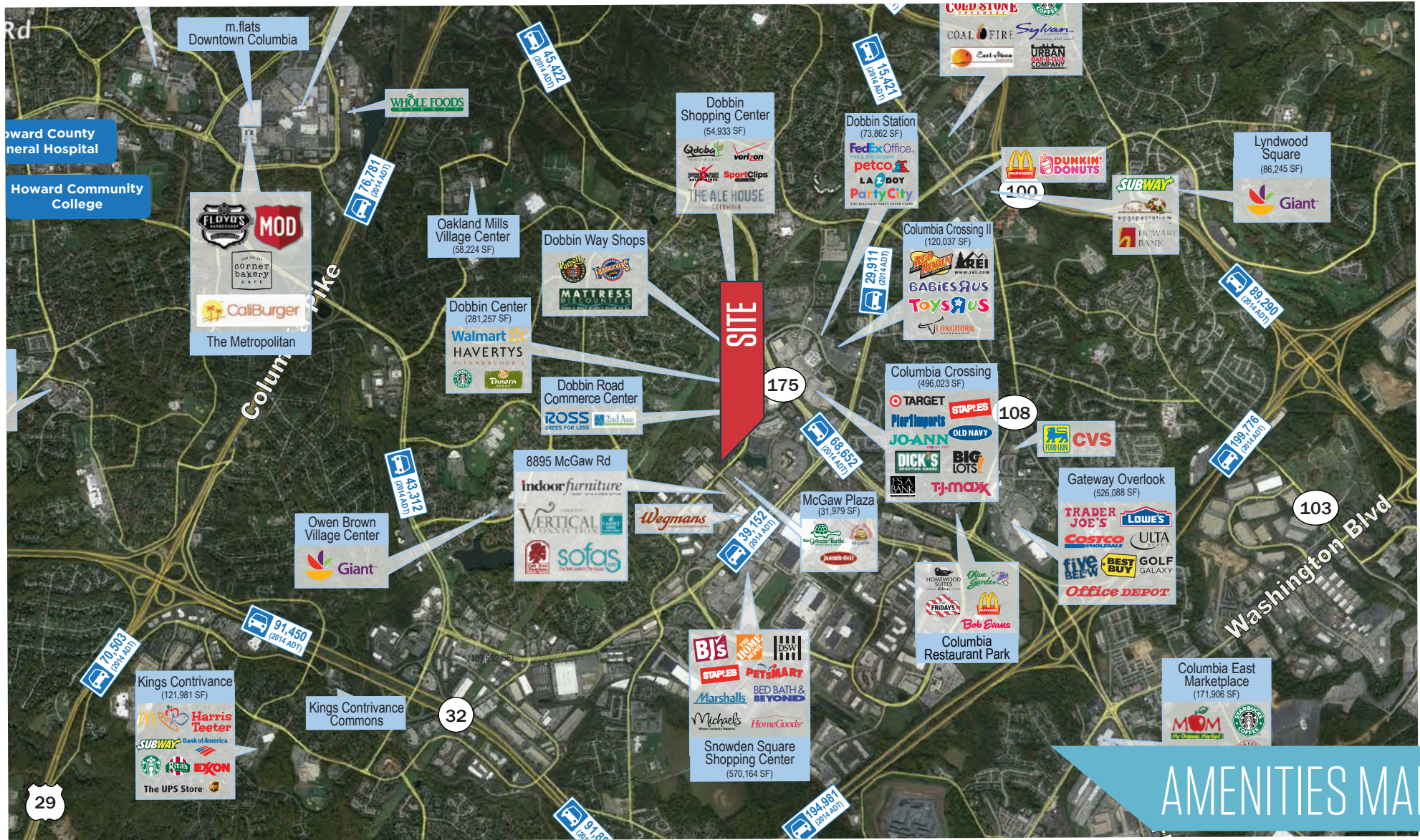
**Dave Fritz, CCIM, SIOR**  
dfritz@klnb.com  
443-574-1410

6011 University Blvd, Suite 350  
Ellicott City, MD 21043  
[klnb.com](http://klnb.com)

**NAI**klnb

# 6570 DOBBIN ROAD

Columbia, Maryland 21045  
Howard County



## AMENITIES MAP

Chuck Breitenother  
cbreitenother@klnb.com  
443-574-1422

Dave Fritz, CCIM, SIOR  
dfritz@klnb.com  
443-574-1410

6011 University Blvd, Suite 350  
Ellicott City, MD 21043  
klnb.com



# 6570 DOBBIN ROAD

Columbia, Maryland 21045  
Howard County

For More Information, Please Contact:

**Chuck Breitenother**

cbreitenother@klnb.com

443-574-1422

**Dave Fritz CCIM, SIOR**

dfritz@klnb.com

443-574-1410

6011 University Boulevard Suite 350  
Ellicott City, Maryland 21043

[klnb.com](http://klnb.com)

 [facebook.com/KLNB](https://facebook.com/KLNB)

 [@KLNBLLC](https://twitter.com/KLNBLLC)

 [linkedin.com/company/klnb](https://linkedin.com/company/klnb)

 [instagram.com/klnbllc](https://instagram.com/klnbllc)

While we have no reason to doubt the accuracy of any of the information supplied, we cannot, and do not, guarantee its accuracy. All information should be independently verified prior to a purchase or lease of the property. We are not responsible for errors, omissions, misuse, or misinterpretation of information contained herein and make no warranty of any kind, express or implied, with respect to the property or any other matters.

**NAI**klnb