

SNOWDEN SQUARE

9021 Snowden Square Drive, Columbia, MD 21046
Howard County



RETAIL FOR LEASE

JOIN:



HomeGoods®

Michaels

BED BATH &
BEYOND

Marshalls®

DSW
DESIGNER SHOE WAREHOUSE®

- Fully leased
- Outparcel building of Snowden Square power center
- Easy access to Snowden River Parkway (40,835 ADT) and Route 175 (70,162 ADT)
- Direct visibility to Snowden River Parkway and across from Wegmans

OWNED & MANAGED BY:



FEDDER

Michael Ginsburg
mginsburg@klnb.com
443-632-2041

Ryan Minnehan
rminnehan@klnb.com
443-632-2088

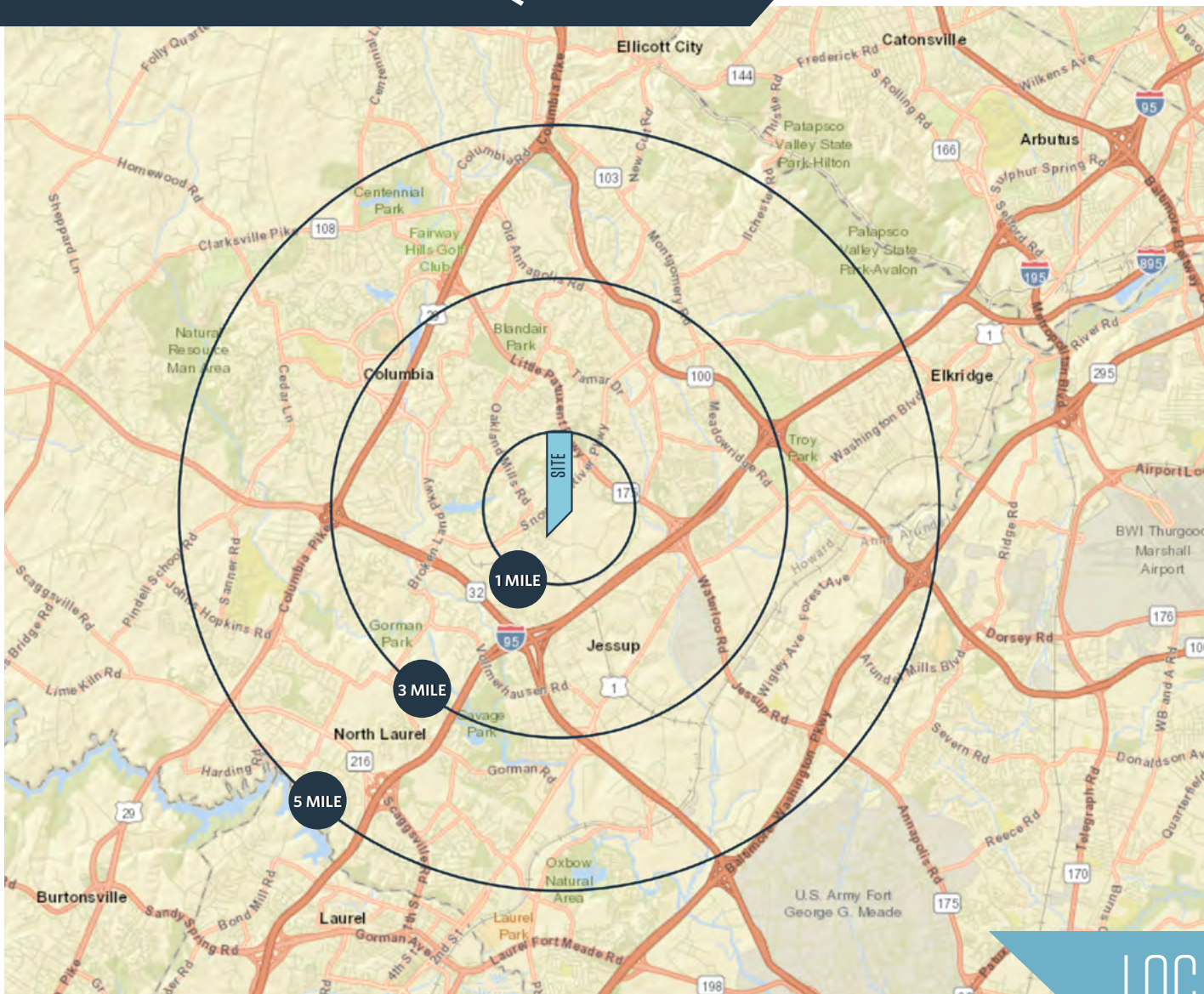
Michael Patz
mpatz@klnb.com
443-632-2043

100 West Road, Suite 505
Towson, MD 21204
klnb.com

klnb

SNOWDEN SQUARE

9021 Snowden Square Drive, Columbia, MD 21046
Howard County



DEMOGRAPHICS | 2018:

1-MILE	3-MILE	5-MILE
Population		
3,480	87,917	215,102
Daytime Population		
18,618	78,447	176,066
Households		
1,367	33,386	79,224
Average HH Income		
\$125,534	\$120,051	\$129,612

[CLICK TO DOWNLOAD DEMOGRAPHIC REPORT](#)

TRAFFIC COUNTS | 2016:

Snowden River Pkwy 40,835 ADT

LOCATION & DEMOGRAPHICS

Michael Ginsburg
mginsburg@klnb.com
443-632-2041

Ryan Minnehan
rminnehan@klnb.com
443-632-2088

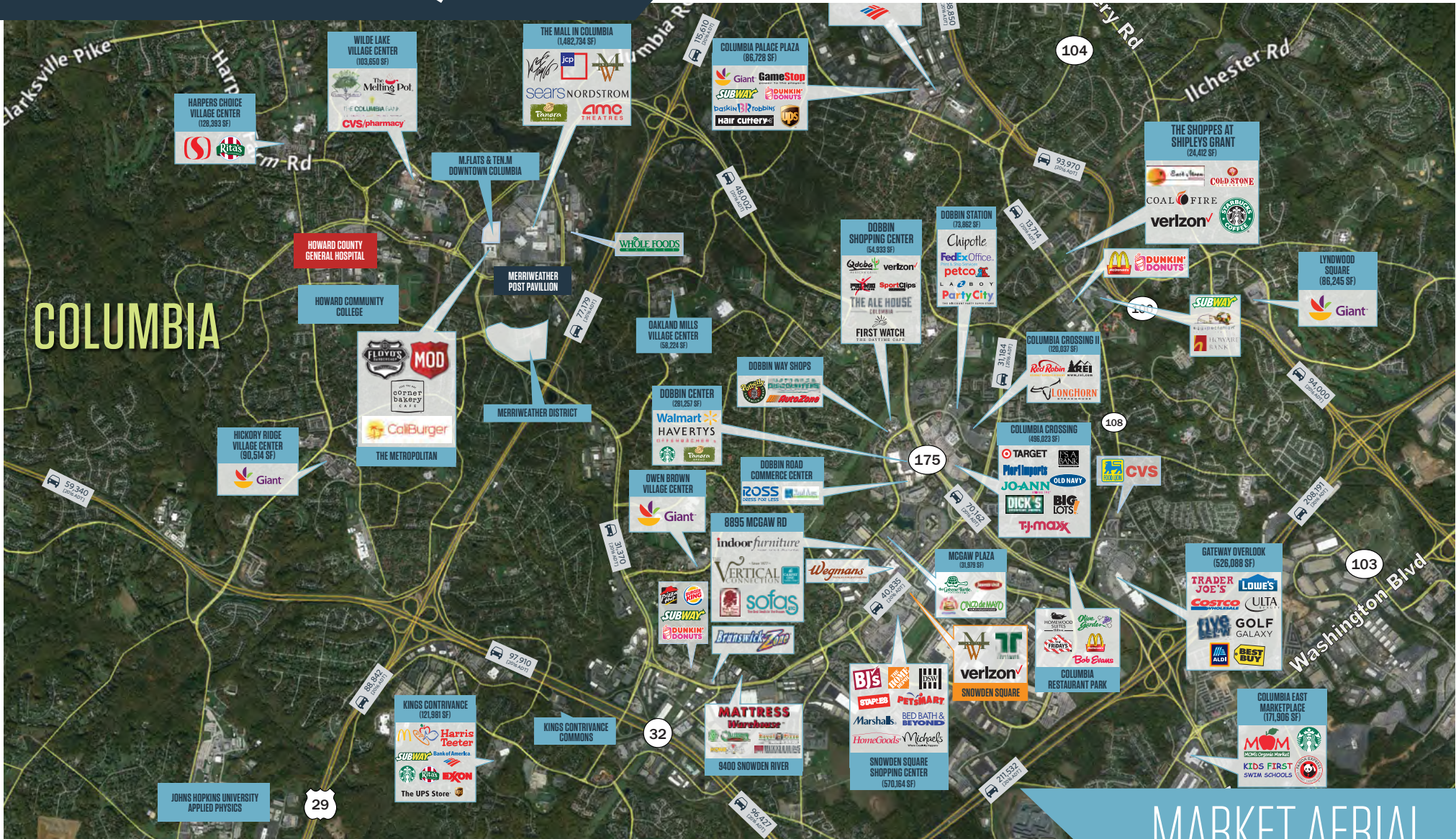
Michael Patz
mpatz@klnb.com
443-632-2043

100 West Road, Suite 505
Towson, MD 21204
klnb.com



SNOWDEN SQUARE

9021 Snowden Square Drive, Columbia, MD 21046
Howard County



Michael Ginsburg
mginsburg@klnb.com
443-632-2041

Ryan Minnehan
rminnehan@klnb.com
443-632-2088

Michael Patz
mpatz@klnb.com
443-632-2043

100 West Road, Suite 505
Towson, MD 21204
klnb.com

klnb

SNOWDEN SQUARE

9021 Snowden Square Drive, Columbia, MD 21046
Howard County



MIDVIEW AERIAL

Michael Ginsburg
mginsburg@klnb.com
443-632-2041

Ryan Minnehan
rminnehan@klnb.com
443-632-2088

Michael Patz
mpatz@klnb.com
443-632-2043

100 West Road, Suite 505
Towson, MD 21204
klnb.com

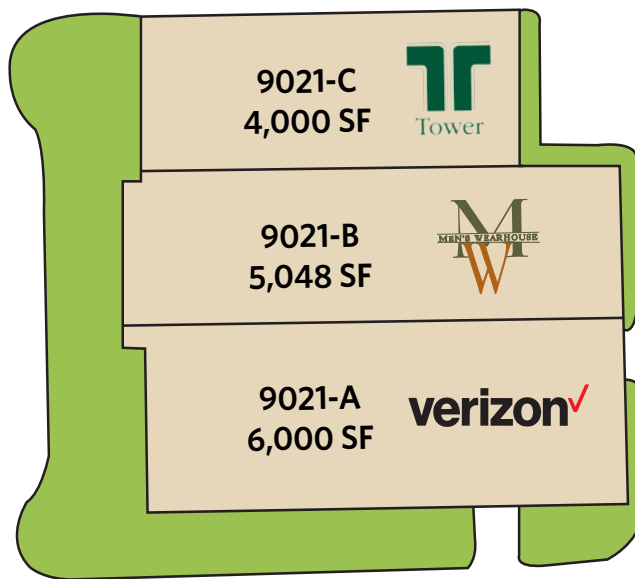
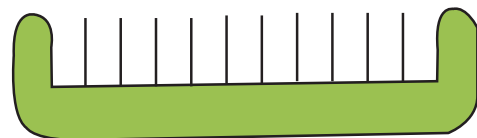
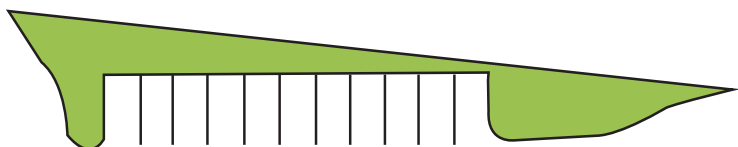


SNOWDEN SQUARE

9021 Snowden Square Drive, Columbia, MD 21046
Howard County

SNOWDEN RIVER PARKWAY

40,835
[2016 ADT]



TENANTS	Unit	Tenant	Area
	9021-A	Verizon	6,000 SF
	9021-B	Men's Wearhouse	5,048 SF
	9021-C	Tower Federal Credit Union	4,000 SF

SITE PLAN

Michael Ginsburg
mginsburg@klnb.com
443-632-2041

Ryan Minnehan
rminnehan@klnb.com
443-632-2088

Michael Patz
mpatz@klnb.com
443-632-2043

100 West Road, Suite 505
Towson, MD 21204
klnb.com



SNOWDEN SQUARE

9021 Snowden Square Drive, Columbia, MD 21046
Howard County

CLICK TO VIEW PROPERTY WEBSITE

For More Information, Please Contact:

Michael Ginsburg
mginsburg@klnb.com
443-632-2041

Ryan Minnehan
rminnehan@klnb.com
443-632-2088

Michael Patz
mpatz@klnb.com
443-632-2043

100 West Road, Suite 505
Towson, MD 21204

klnb.com

 facebook.com/KLNB

 [@KLNBLLC](https://twitter.com/KLNBLLC)

 linkedin.com/company/klnb

 instagram.com/klnbllc

While we have no reason to doubt the accuracy of any of the information supplied, we cannot, and do not, guarantee its accuracy. All information should be independently verified prior to a purchase or lease of the property. We are not responsible for errors, omissions, misuse, or misinterpretation of information contained herein and make no warranty of any kind, express or implied, with respect to the property or any other matters.

klnb