

5501 TWIN KNOLLS ROAD

Twin Knolls Professional Center
Columbia, Maryland 21045

Recent Price Reduction!

FOR SALE OR LEASE

Property Features

- **Move in condition!**
- 1,400 SF condo available
- Available for sale or lease
- Walk-up unit, built in 1982
- \$1,850/month plus utilities and janitorial
- Sales Price: \$225,000
- Condo Fee: \$330/month
- Taxes: \$630
- Parking 4:1000
- Wired for Verizon FIOS
- Quiet location just off Route 175
- 1/4 mile to Route 29
- Hotel and restaurant within walking distance

Spence Daw
sdaw@klnb.com
443-574-1429

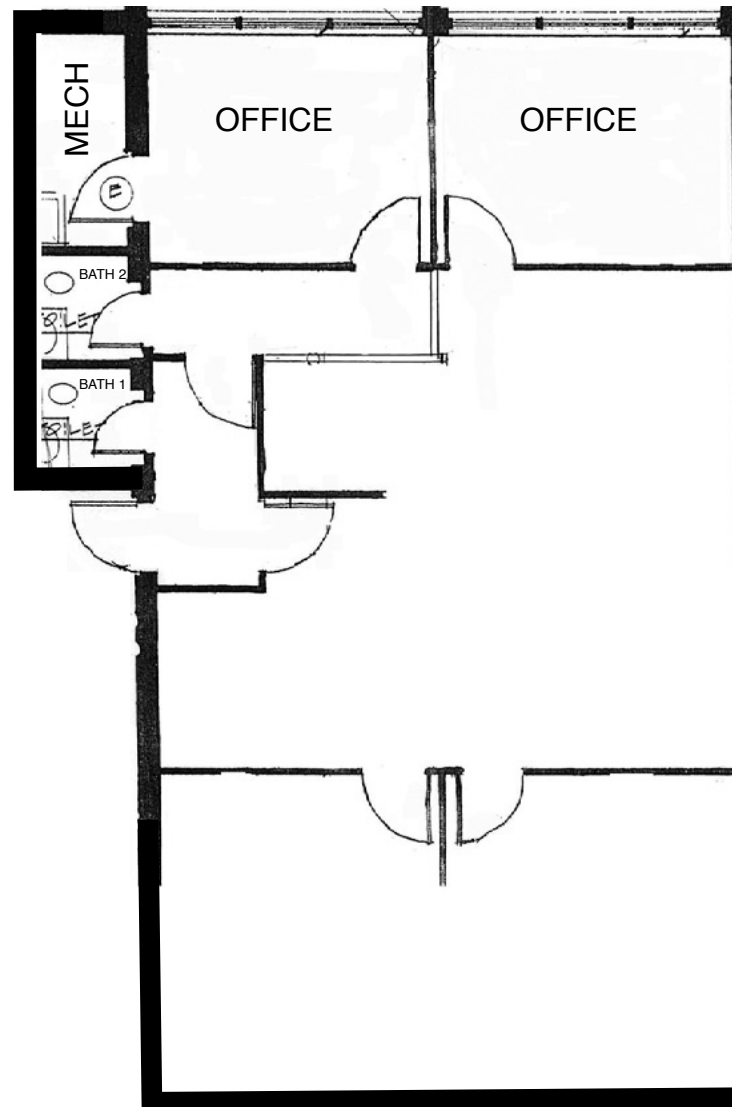
David J. Fritz, CCIM, SIOR
dfritz@klnb.com
443-574-1410

6011 University Blvd, Suite 350
Ellicott City, MD 21043
klnb.com

NAIklnb

5501 TWIN KNOLLS ROAD

Twin Knolls Professional Center
Columbia, Maryland 21045



FLOOR PLAN

Spence Daw
sdaw@klnb.com
443-574-1429

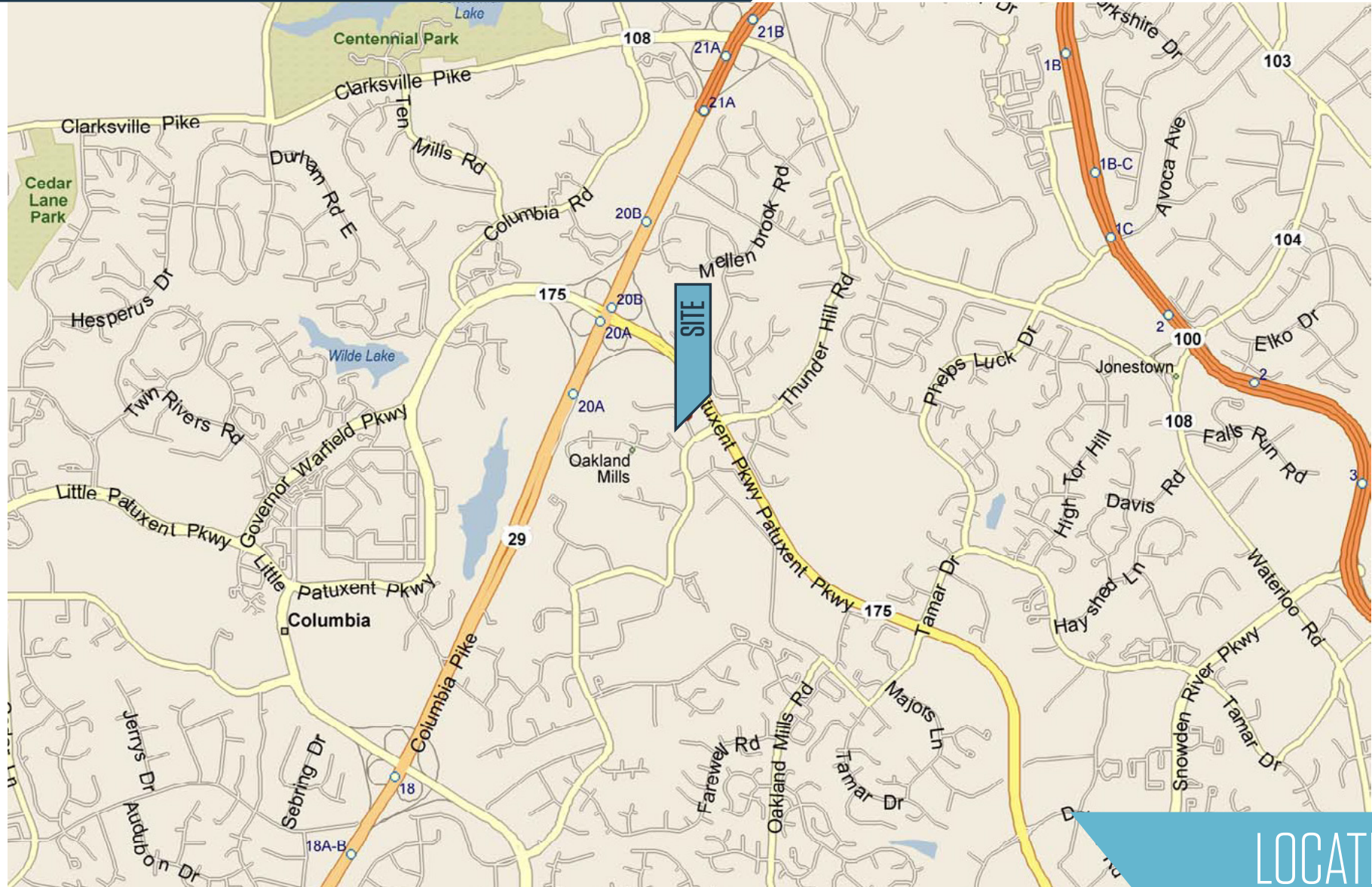
David J. Fritz, CCIM, SIOR
dfritz@klnb.com
443-574-1410

6011 University Blvd, Suite 350
Ellicott City, MD 21043
klnb.com

NAIklnb

5501 TWIN KNOLLS ROAD

Twin Knolls Professional Center
Columbia, Maryland 21045



LOCATION

Spence Daw
sdaw@klnb.com
443-574-1429

David J. Fritz, CCIM, SIOR
dfritz@klnb.com
443-574-1410

6011 University Blvd, Suite 350
Ellicott City, MD 21043
klnb.com



5501 TWIN KNOLLS ROAD

Twin Knolls Professional Center
Columbia, Maryland 21045

[CLICK TO VIEW PROPERTY WEBSITE](#)

For More Information, Please Contact:

Spence Daw

sdaw@klnb.com

443-574-1429

David J. Fritz, CCIM, SIOR

dfritz@klnb.com

443-574-1410

6011 University Blvd, Suite 350
Ellicott City, MD 21043

klnb.com

 facebook.com/KLNB

 [@KLNBLLC](https://twitter.com/KLNBLLC)

 linkedin.com/company/klnb

 instagram.com/klnbllc

While we have no reason to doubt the accuracy of any of the information supplied, we cannot, and do not, guarantee its accuracy. All information should be independently verified prior to a purchase or lease of the property. We are not responsible for errors, omissions, misuse, or misinterpretation of information contained herein and make no warranty of any kind, express or implied, with respect to the property or any other matters.

NAI klnb