



## AVAILABILITY:

### First Floor (Building I)

#### Suite 120

- 3,157 RSF - \$15.00/sqft + utilities - **Available**

### Second Floor (Building I)

#### Suite 220

- 5,700 RSF - \$15.00/sqft + utilities - **Available**

### Warehouse (Building III)

#### Unit A

- 900 SF Office
- Potential storage yard

#### Unit B

- 600 SF Warehouse
- 300 SF Office
- Potential storage yard

## PROPERTY FEATURES:

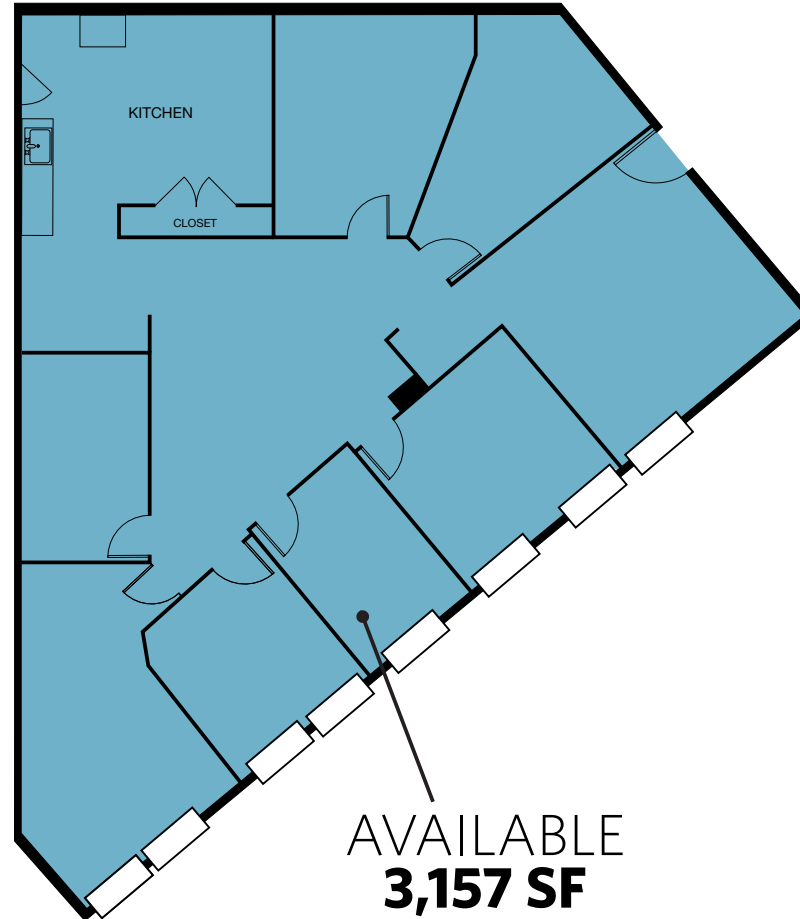
- Abundant parking
- Less than 1 mile to Dulles Airport
- Some furniture included
- Ready to move-in
- PD-GI zoning



AVAILABLE  
**5,700 SF**

BUILDING I (SECOND FLOOR) - SUITE 220 | 5,700 SF

## BUILDING I (FIRST FLOOR) - SUITE 120 | 3,157 SF



# SITE PLAN

# 105 EXECUTIVE DRIVE

105 EXECUTIVE DRIVE, STERLING, VIRGINIA 20166



**KEVIN GOELLER, CCIM, SIOR**  
kgoeller@klnb.com | 703-268-2730

**RYAN GOELLER, CCIM**  
rgoeller@klnb.com | 703-268-2731

**CHASE STEWART**  
cstewart@klnb.com | 703-268-2732



## FOR MORE INFORMATION, PLEASE CONTACT:

**KEVIN GOELLER, CCIM, SIOR**

kgoeller@klnb.com | 703-268-2730

**RYAN GOELLER, CCIM**

rgoeller@klnb.com | 703-268-2731

**CHASE STEWART**

cstewart@klnb.com | 703-268-2732

8065 Leesburg Pike, Suite 700, Tysons, VA 22182

.....  
**klnb.com**

 [facebook.com/KLNB](https://facebook.com/KLNB)

 [@KLNBLLC](https://twitter.com/KLNBLLC)

 [linkedin.com/company/klnb](https://linkedin.com/company/klnb)

 [instagram.com/klnbllc](https://instagram.com/klnbllc)

**CLICK TO VIEW PROPERTY WEBSITE**