



OFFICE/WAREHOUSE FOR LEASE

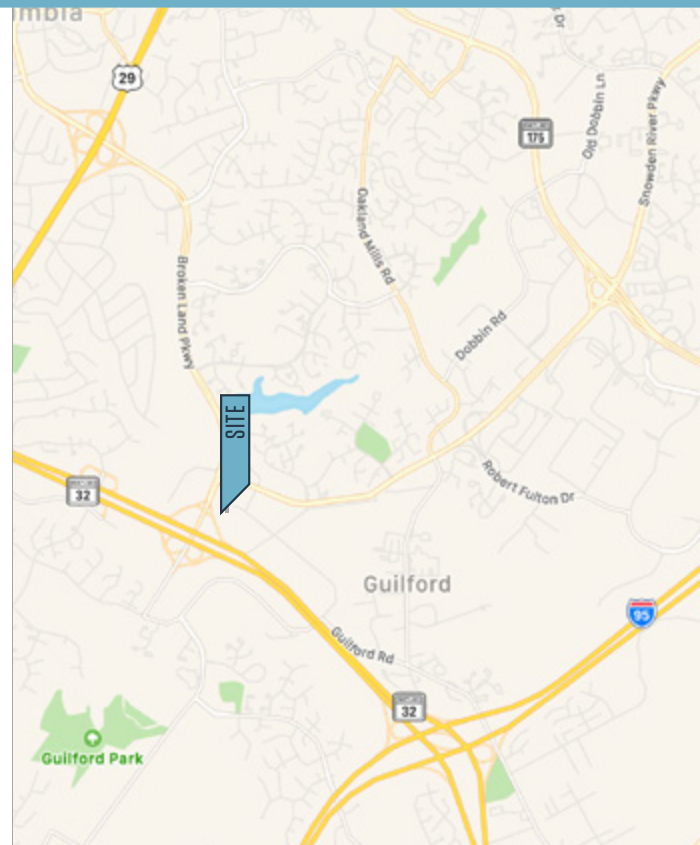
PROPERTY HIGHLIGHTS:

Suite Highlights

- Approximately 2,000 RSF (25' x 80') available 6/1/2019
- 1/3 office; 2/3 air-conditioned warehouse
- Reception area, two (2) individual offices, open warehouse

Building Highlights

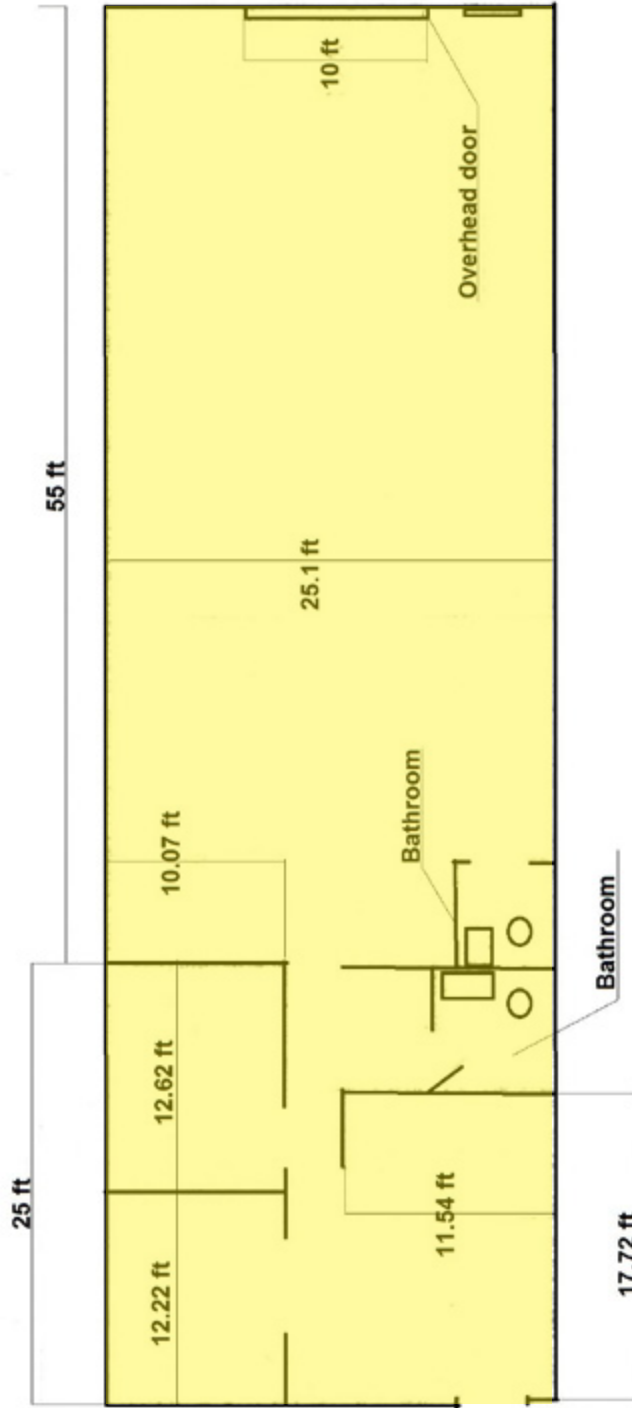
- One (1) story office/warehouse with drive-in door
- Excellent location between intersections of Route 32/ Broken Land Parkway and Snowden River Parkway/Broken Land Parkway
- Minutes to I-95, center of Baltimore/Washington Corridor
- Convenient drive-up parking, Verizon FiOS available



9689 GERWIG LANE

Unit A, Columbia, MD 21046 | Howard County

FLOOR PLAN - UNIT A



MARKET AERIAL



9689 GERWIG LANE

Unit A, Columbia, MD 21046 | Howard County

[CLICK TO VIEW PROPERTY WEBSITE](#)

For More Information, Please Contact:

Spence Daw

sdaw@klnb.com

443-574-1429

Richard Fields

rfields@klnb.com

443-574-1428

6011 University Boulevard, Suite 350
Ellicott City, MD 21043

klnb.com

 facebook.com/KLNB

 [@KLNBLLC](https://twitter.com/KLNBLLC)

 linkedin.com/company/klnb

 instagram.com/klnbllc

While we have no reason to doubt the accuracy of any of the information supplied, we cannot, and do not, guarantee its accuracy. All information should be independently verified prior to a purchase or lease of the property. We are not responsible for errors, omissions, misuse, or misinterpretation of information contained herein and make no warranty of any kind, express or implied, with respect to the property or any other matters.

