

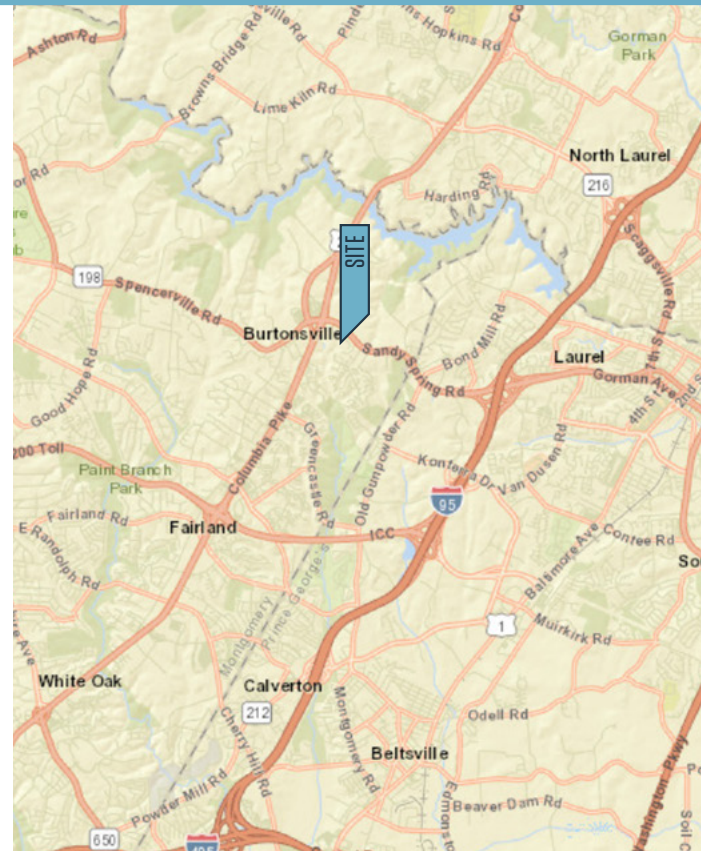


# OFFICE / FLEX SPACE FOR LEASE

## PROPERTY HIGHLIGHTS:

### Suite Highlights

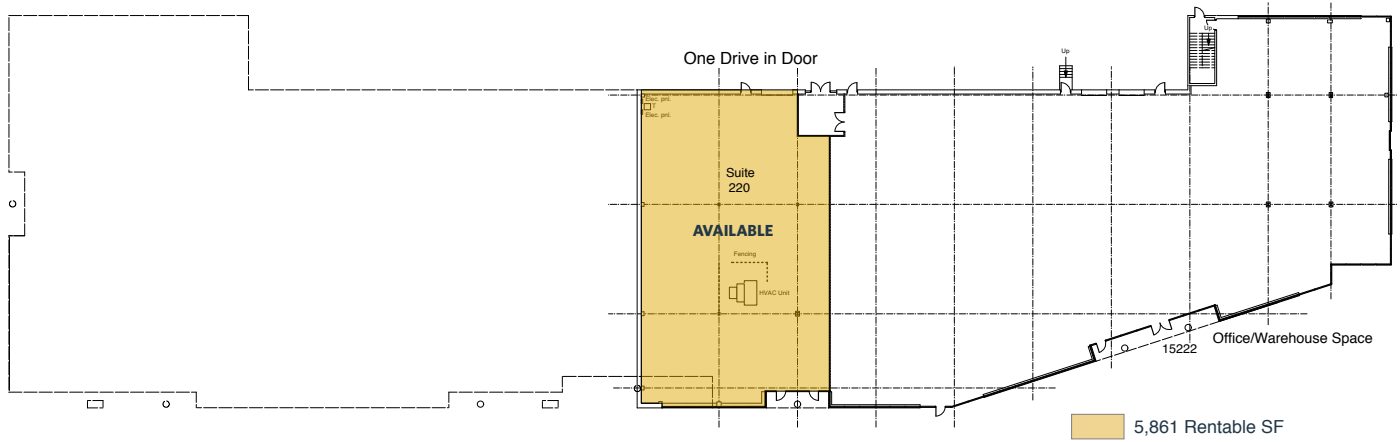
- Centrally located in Burtonsville in the heart of the Baltimore/Washington Corridor
- New local ownership
- Burtonsville Post Office in building
- Offices with good window line
- Office/warehouse space with dock high loading and drive-in access
- Rental Rates:
  - Office: \$17.00 Per Sq. Ft., Full Service
  - Office/Warehouse: \$12.00 Per Sq. Ft, NNN



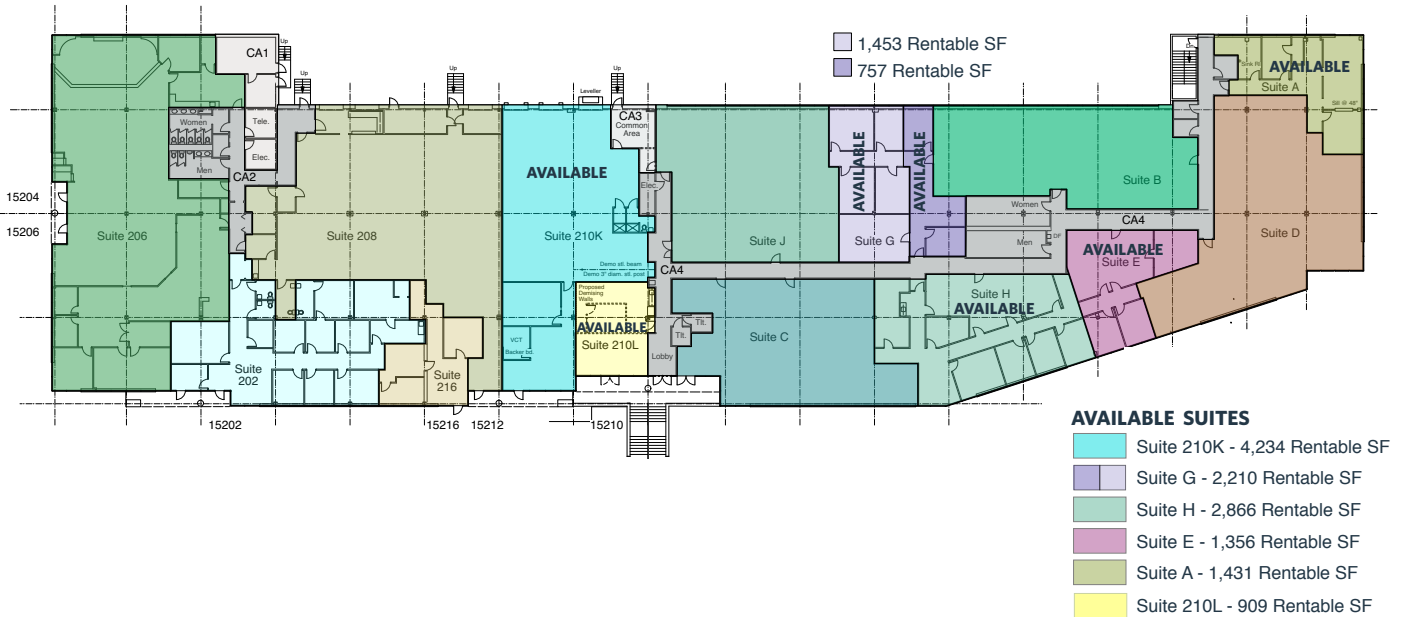
# 15200-15222 DINO DRIVE

Burtonsville, MD 20866 | Montgomery County

## FIRST FLOOR PLAN



## SECOND FLOOR PLAN



Abby Glassberg  
 aglassberg@klnb.com  
 443-574-1433

Chuck Breitenother  
 cbreitenother@klnb.com  
 443-574-1422

## PHOTOS



# 15200-15222 DINO DRIVE

Burtonsville, MD 20866 | Montgomery County



## AERIAL



While we have no reason to doubt the accuracy of any of the information supplied, we cannot, and do not, guarantee its accuracy. All information should be independently verified prior to a purchase or lease of the property. We are not responsible for errors, omissions, misuse, or misinterpretation of information contained herein and make no warranty of any kind, express or implied, with respect to the property or any other matters.

**Abby Glassberg**  
 aglassberg@klbn.com  
 443-574-1433

**Chuck Breitenother**  
 cbreitenother@klbn.com  
 443-574-1422

6011 University Blvd, Suite 350  
 Ellicott City, MD 21043  
 klbn.com