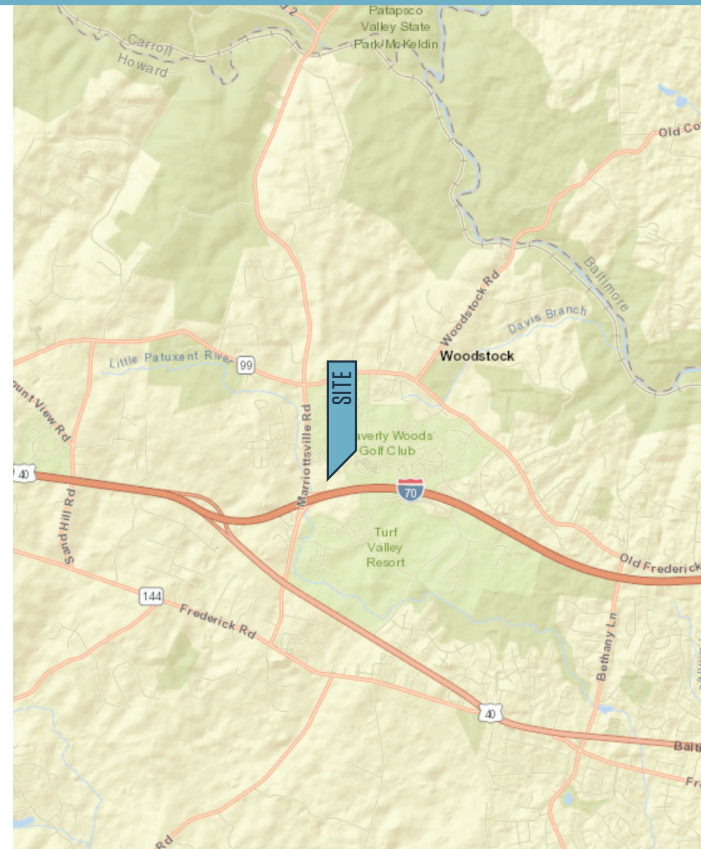




FOR SUBLEASE

PROPERTY HIGHLIGHTS:

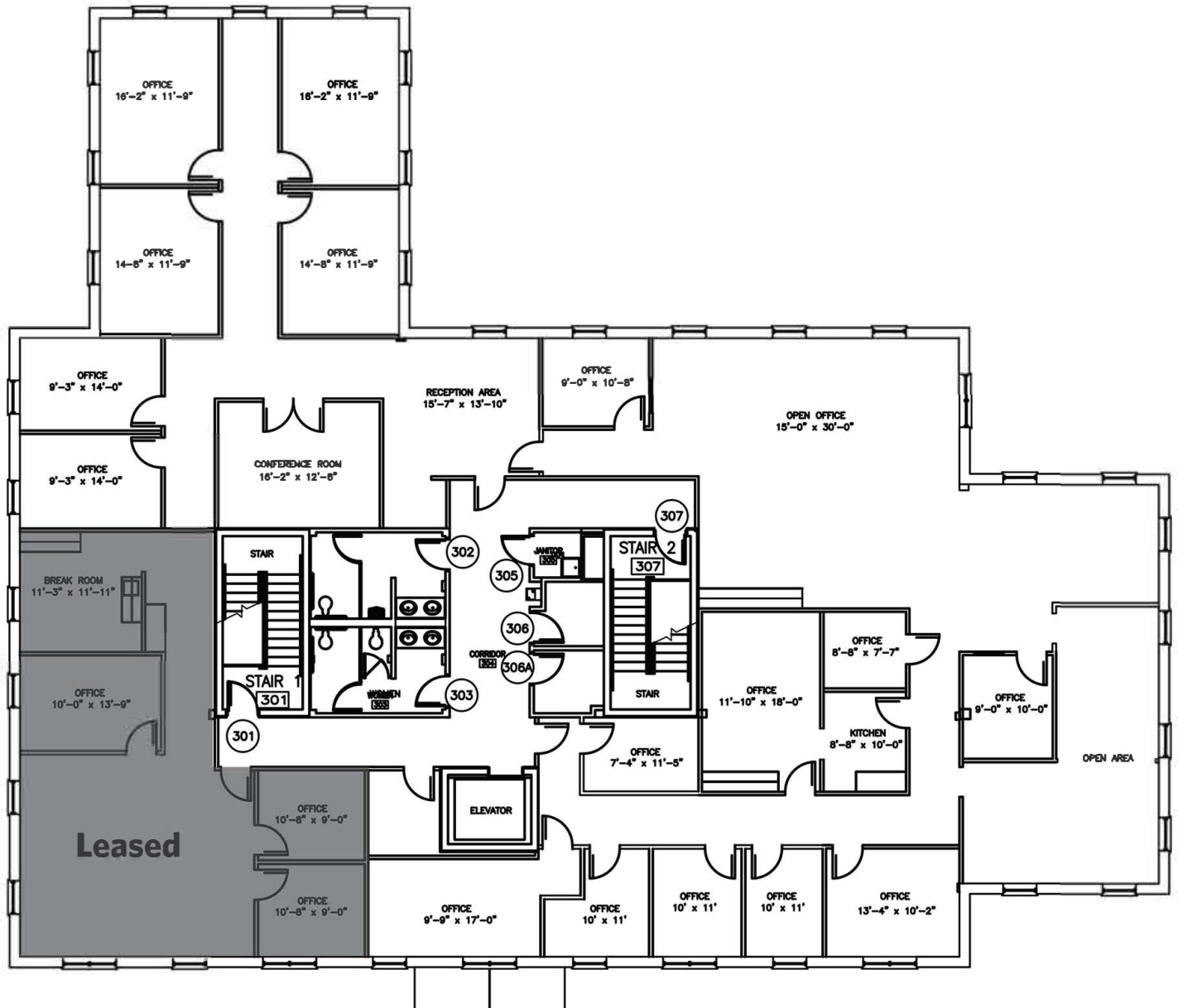
- 1,500 - 5,977 square feet
- \$19.75 per square foot Full Service
- Class B building
- Across from Waverly Woods Golf Course & Swimming facility
- Easy access to I-70
- Expires August 31, 2020



2205 WARWICK WAY

Marriottsville, MD 21104 | Howard County

FLOOR PLAN



PHOTOS



2205 WARWICK WAY

Marriottsville, MD 21104 | Howard County



AERIAL



While we have no reason to doubt the accuracy of any of the information supplied, we cannot, and do not, guarantee its accuracy. All information should be independently verified prior to a purchase or lease of the property. We are not responsible for errors, omissions, misuse, or misinterpretation of information contained herein and make no warranty of any kind, express or implied, with respect to the property or any other matters.

Chuck Breitenother
cbreitenother@klnb.com
443-574-1422

6011 University Blvd. Suite 350
Eliicott City, MD 21043
klnb.com