



FOR LEASE

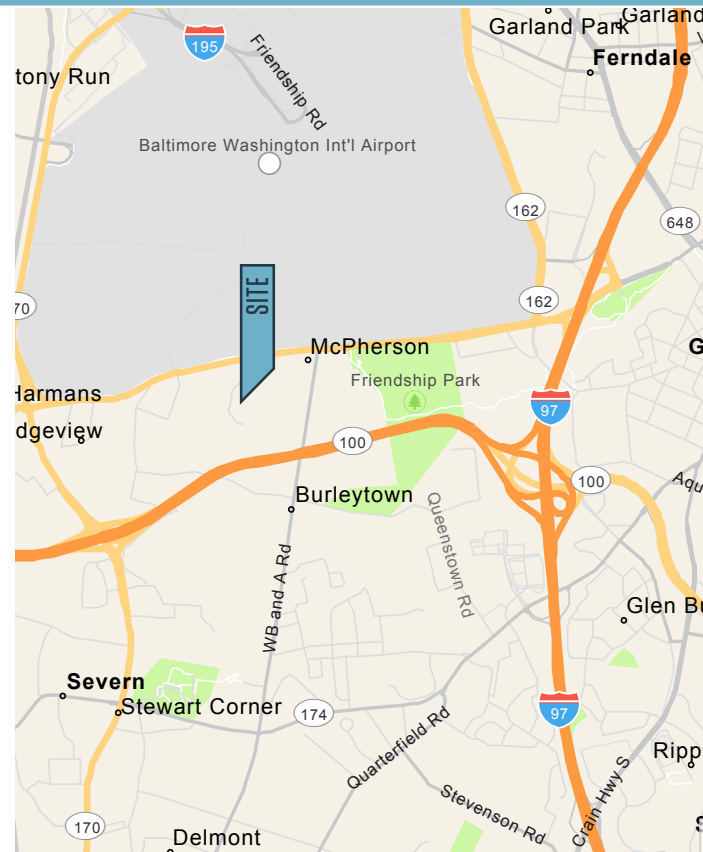
PROPERTY HIGHLIGHTS:

Suite Highlights

- **Suite Q:** 3,068 SF available
- **Rental Rate:** \$12.50 NNN
- **Ceiling Height:** 16' clear
- **Operating Expenses:** \$2.25 PSF
- **Restrooms:** Two (2)

Building Highlights

- **Parking:** Ample free parking
- **Loading:** One (1) at-grade drive-in
- **Electric:** 200 amp, 3 phase
- **Slab:** 5" thick above gravel
- **Zoning:** W-1
- **Heat:** Electric

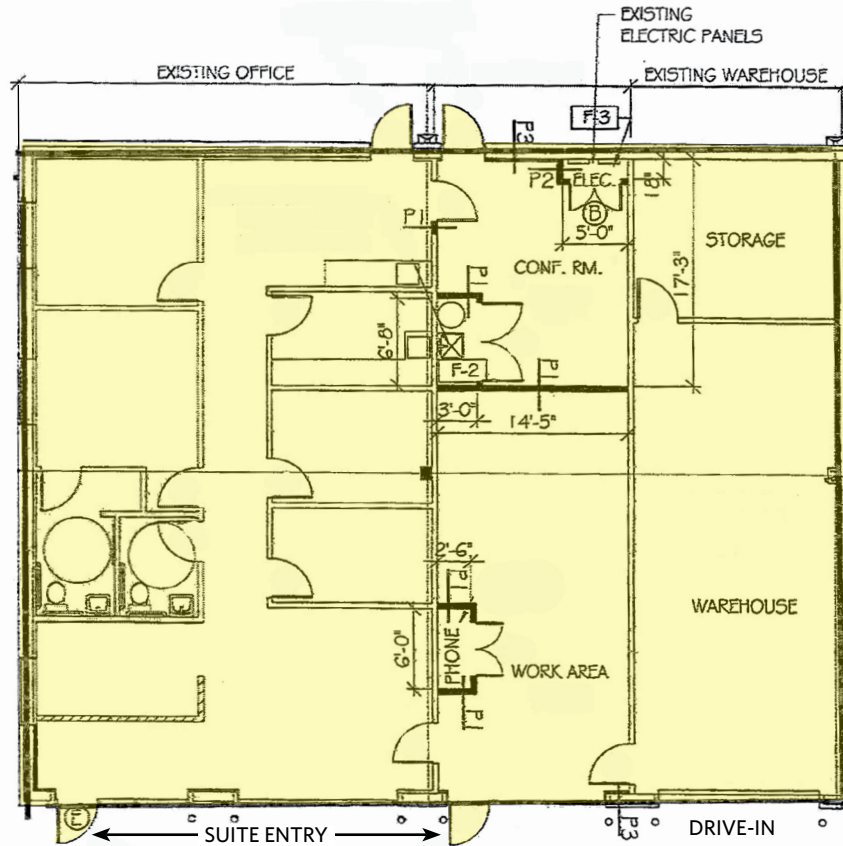


509-B MCCORMICK DRIVE

Glen Burnie, MD 21061 | Anne Arundel County

FLOOR PLAN

3,068 SF



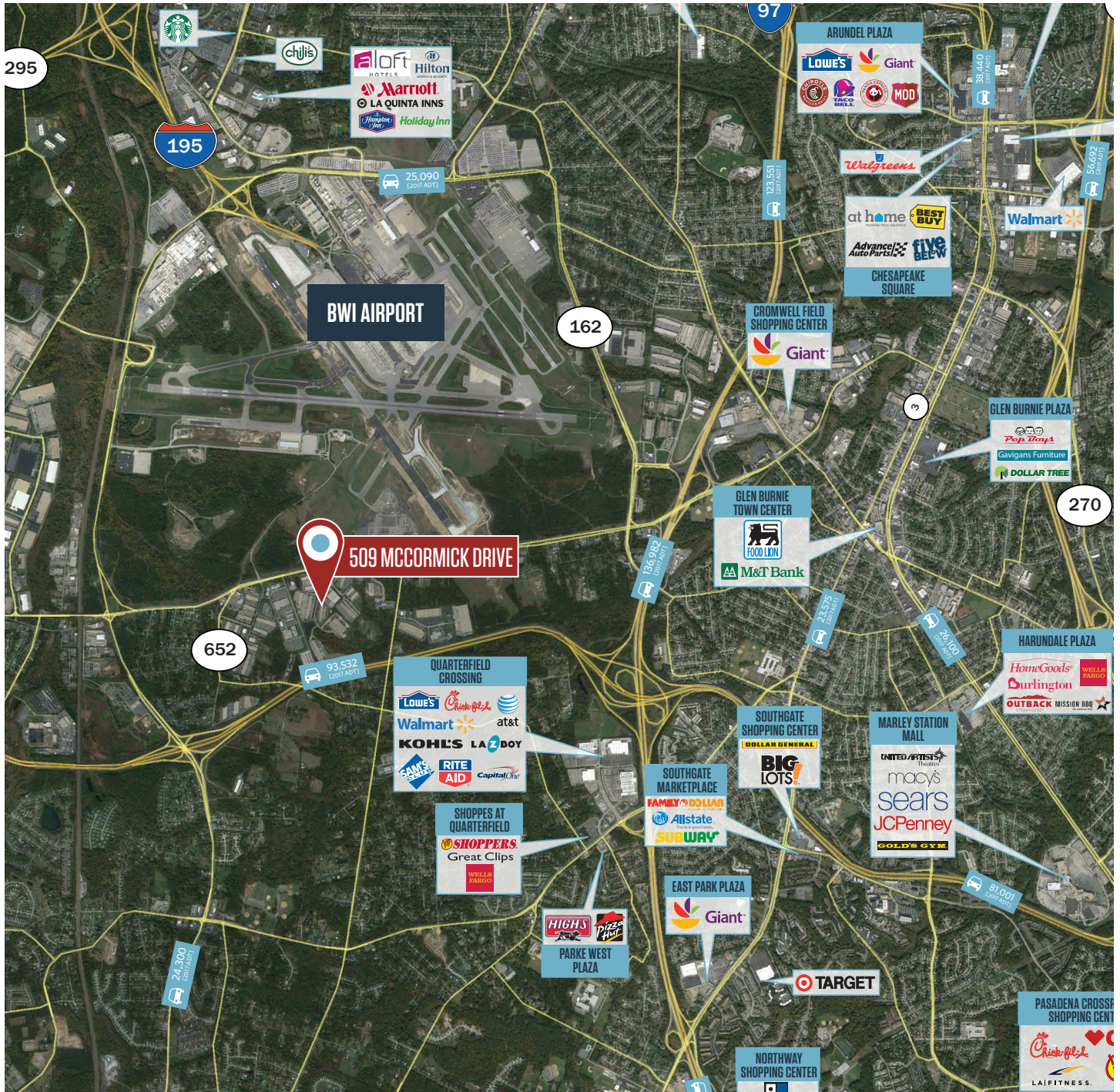
PHOTOS



David J. Fritz, CCIM, SIOR
dfritz@klnb.com
443-574-1410

Alan M. Coppola, SIOR
acoppola@klnb.com
443-574-1404

MARKET AERIAL



509-B MCCORMICK DRIVE

Glen Burnie, MD 21061 | Anne Arundel County

[CLICK TO VIEW PROPERTY WEBSITE](#)

For More Information, Please Contact:

David J. Fritz, CCIM, SIOR

dfritz@klnb.com

443-574-1410

Alan M. Coppola, SIOR

acoppola@klnb.com

443-574-1404

6011 University Boulevard, Suite 350
Ellicott City, MD 21043

klnb.com

 facebook.com/KLNB

 [@KLNBLLC](https://twitter.com/KLNBLLC)

 linkedin.com/company/klnb

 instagram.com/klnbllc

While we have no reason to doubt the accuracy of any of the information supplied, we cannot, and do not, guarantee its accuracy. All information should be independently verified prior to a purchase or lease of the property. We are not responsible for errors, omissions, misuse, or misinterpretation of information contained herein and make no warranty of any kind, express or implied, with respect to the property or any other matters.

NAI klnb