



JOIN THESE RETAILERS



RETAIL FOR LEASE

- 9,520 SF end cap drive-thru available
- Located on Campbell Blvd across from Nottingham Square in White Marsh, MD
- Tremendous exposure to both Philadelphia Rd & Campbell Blvd
- Less than one-half mile from the 1,698,114 SF White Marsh Mall, which is anchored by Macy's, JCPenny, and IKEA

MATT COPELAND

mcopeland@klnb.com | 443-632-2051

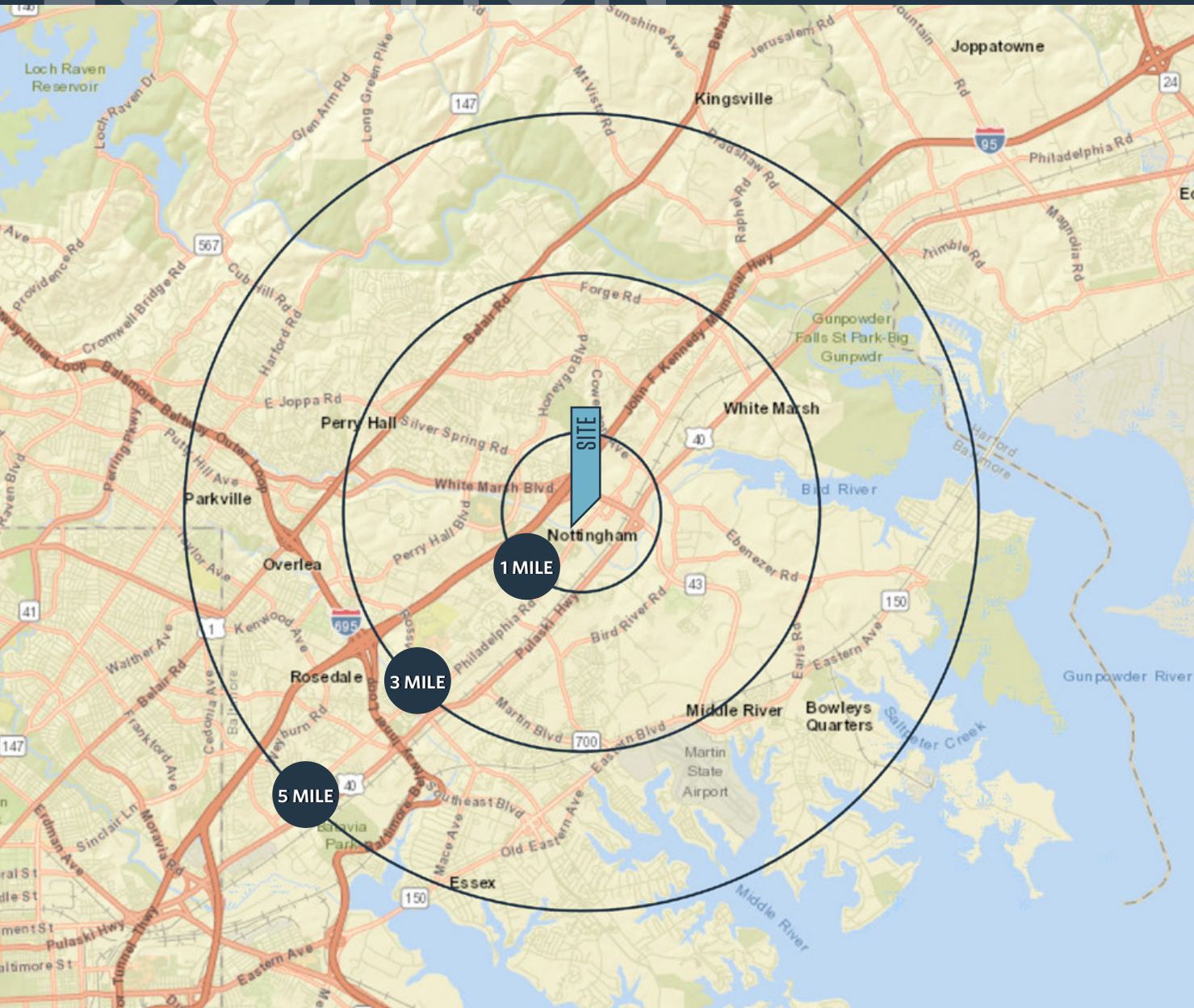
ADAM MILLER

amiller@klnb.com | 443-632-2050

LOCATION

5371 CAMPBELL BLVD

WHITE MARSH, MD 21237, BALTIMORE COUNTY



DEMOGRAPHICS | 2018:

	1-MILE	3-MILE	2-MILE
Population	6,133	79,802	218,245
Daytime Population	10,700	44,957	74,319
Households	2,801	30,799	86,409
Average HH Income	\$85,031	\$87,509	\$80,684

[CLICK TO DOWNLOAD DEMOGRAPHIC REPORT](#)

TRAFFIC COUNTS | 2018:

Campbell Blvd	23,310 ADT
Philadelphia Rd	17,270 ADT

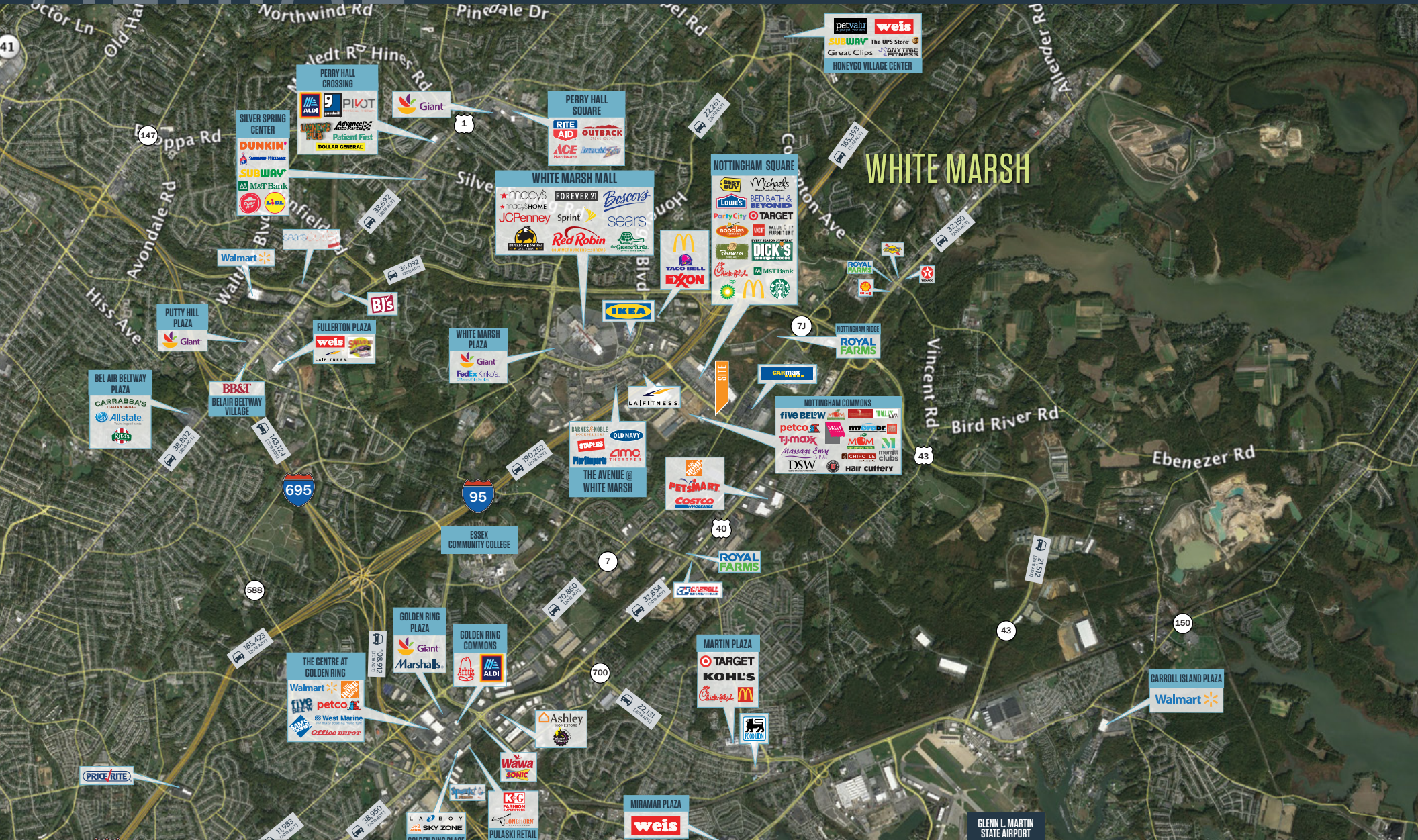
MATT COPELAND

mcopeland@klnb.com | 443-632-2051

ADAM MILLER

amiller@klnb.com | 443-632-2050

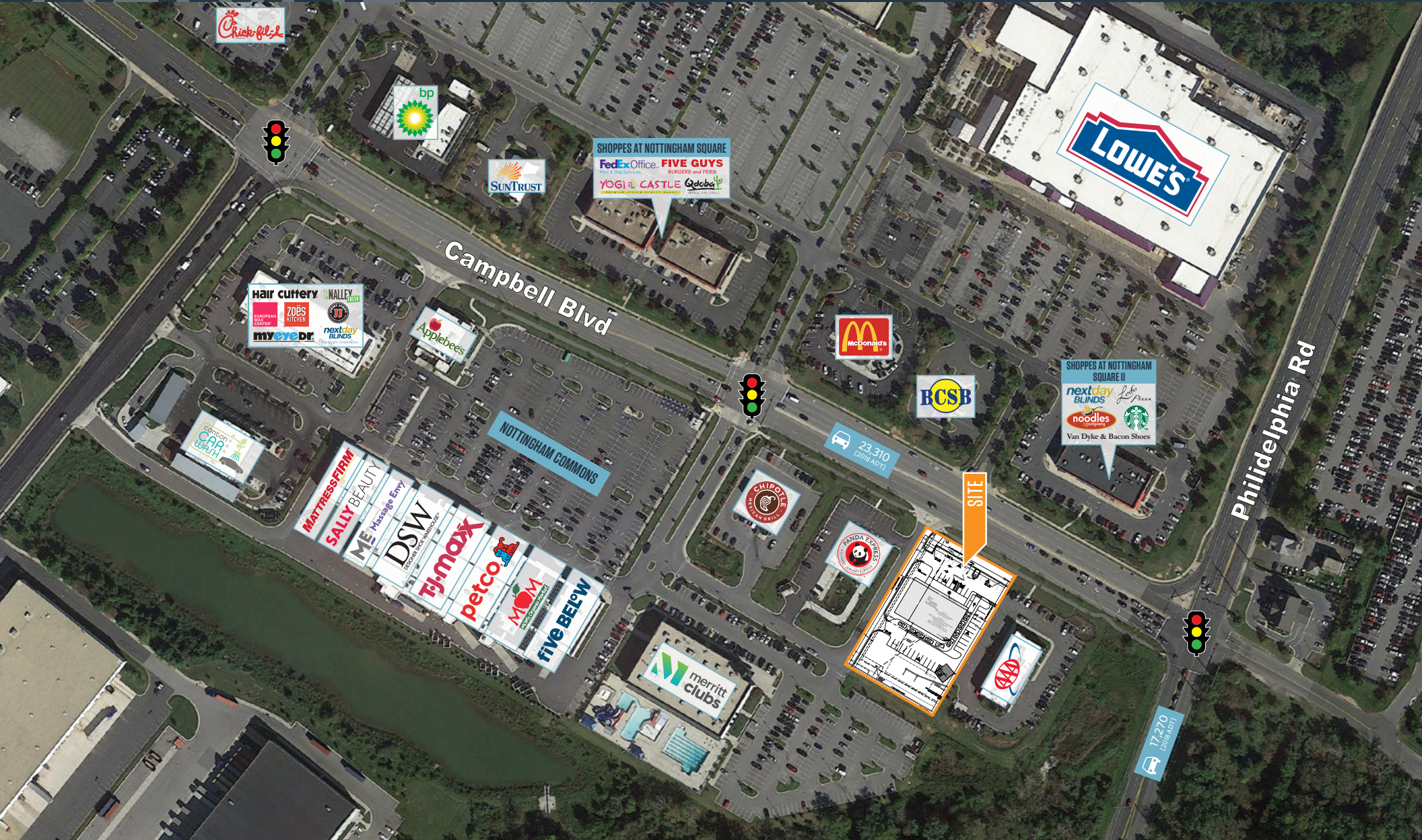




AERIAL

5371 CAMPBELL BLVD

WHITE MARSH, MD 21237, BALTIMORE COUNTY



MATT COPELAND

mcopeland@klnb.com | 443-632-2051

ADAM MILLER

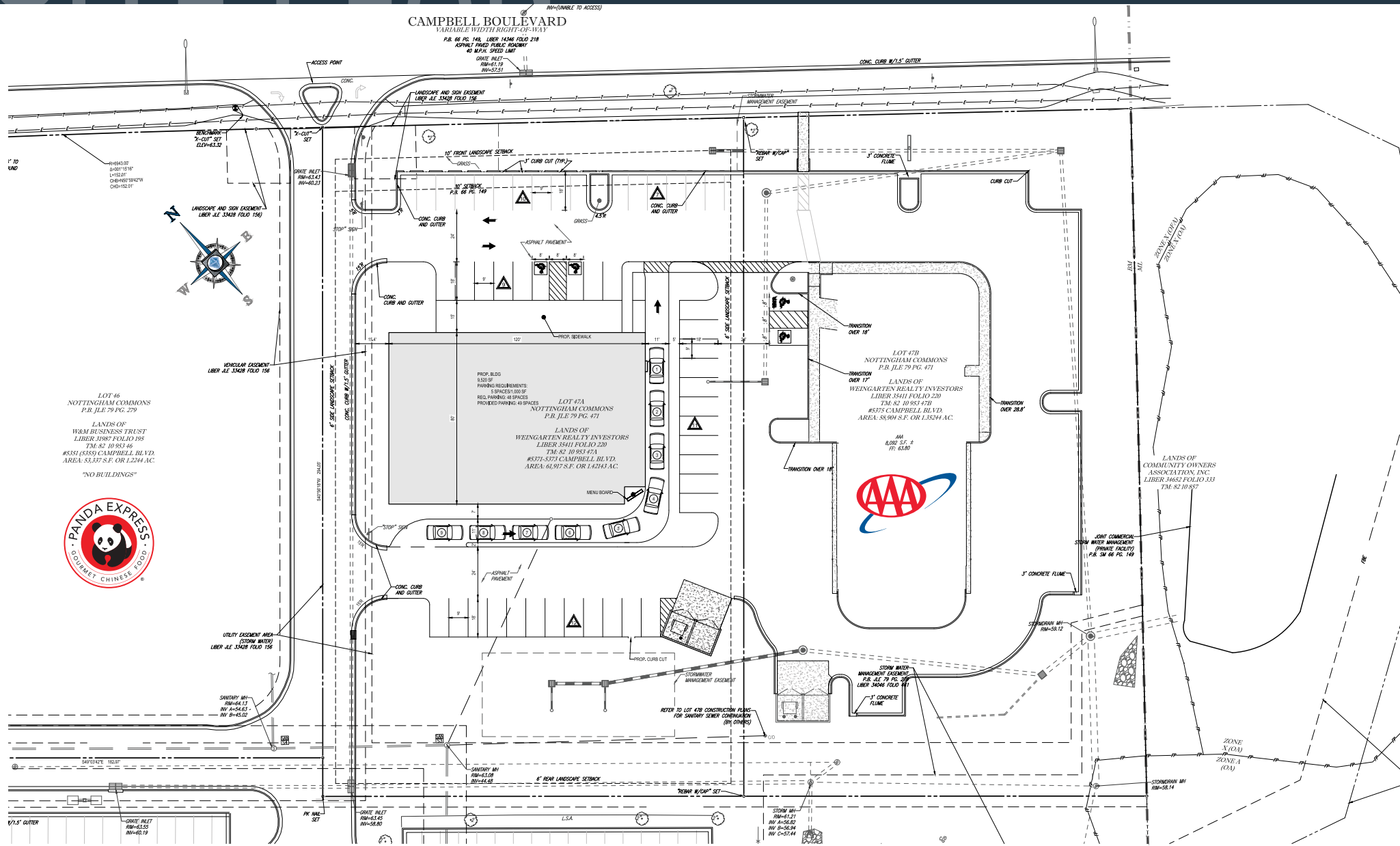
amiller@klnb.com | 443-632-2050

klnb

SITE PLAN

5371 CAMPBELL BLVD

WHITE MARSH, MD 21237, BALTIMORE COUNTY



MATT COPELAND

mcopeland@klnb.com | 443-632-2051

ADAM MILLER

amiller@klnb.com | 443-632-2050





5371 CAMPBELL BLVD

WHITE MARSH, MD 21237, BALTIMORE COUNTY

FOR MORE INFORMATION, PLEASE CONTACT:

MATT COPELAND

mcopeland@klnb.com
443-632-2051

ADAM MILLER

amiller@klnb.com
443-632-2050

100 West Road, Suite 505, Towson, MD 21204

.....

klnb.com

 facebook.com/KLNB

 [@KLNBLLC](https://twitter.com/KLNBLLC)

 linkedin.com/company/klnb

 instagram.com/klnbllc

CLICK TO VIEW PROPERTY WEBSITE

While we have no reason to doubt the accuracy of any of the information supplied, we cannot, and do not, guarantee its accuracy. All information should be independently verified prior to a purchase or lease of the property. We are not responsible for errors, omissions, misuse, or misinterpretation of information contained herein and make no warranty of any kind, express or implied, with respect to the property or any other matters.