

501 N. Calvert Street

Baltimore, Maryland 21202 | Baltimore City



PROPERTY HIGHLIGHTS

- Mixed-use redevelopment to include grocer, retail, office, and hotel
- High visibility to I-83
- Grocer (anchor) opportunity with dedicated parking
- Retail/restaurant space
- Both enterprise zone and grocer incentives are available
- Retail parking exceeding 4 spaces/1000 SF
- Convenient truck access and loading

DEMOGRAPHICS

8 Minutes



144,047
POPULATION



\$64,761
AVERAGE HH INCOME



173,757
DAYTIME POPULATION



\$38,581
MEDIAN HH INCOME



62,295
HOUSEHOLDS

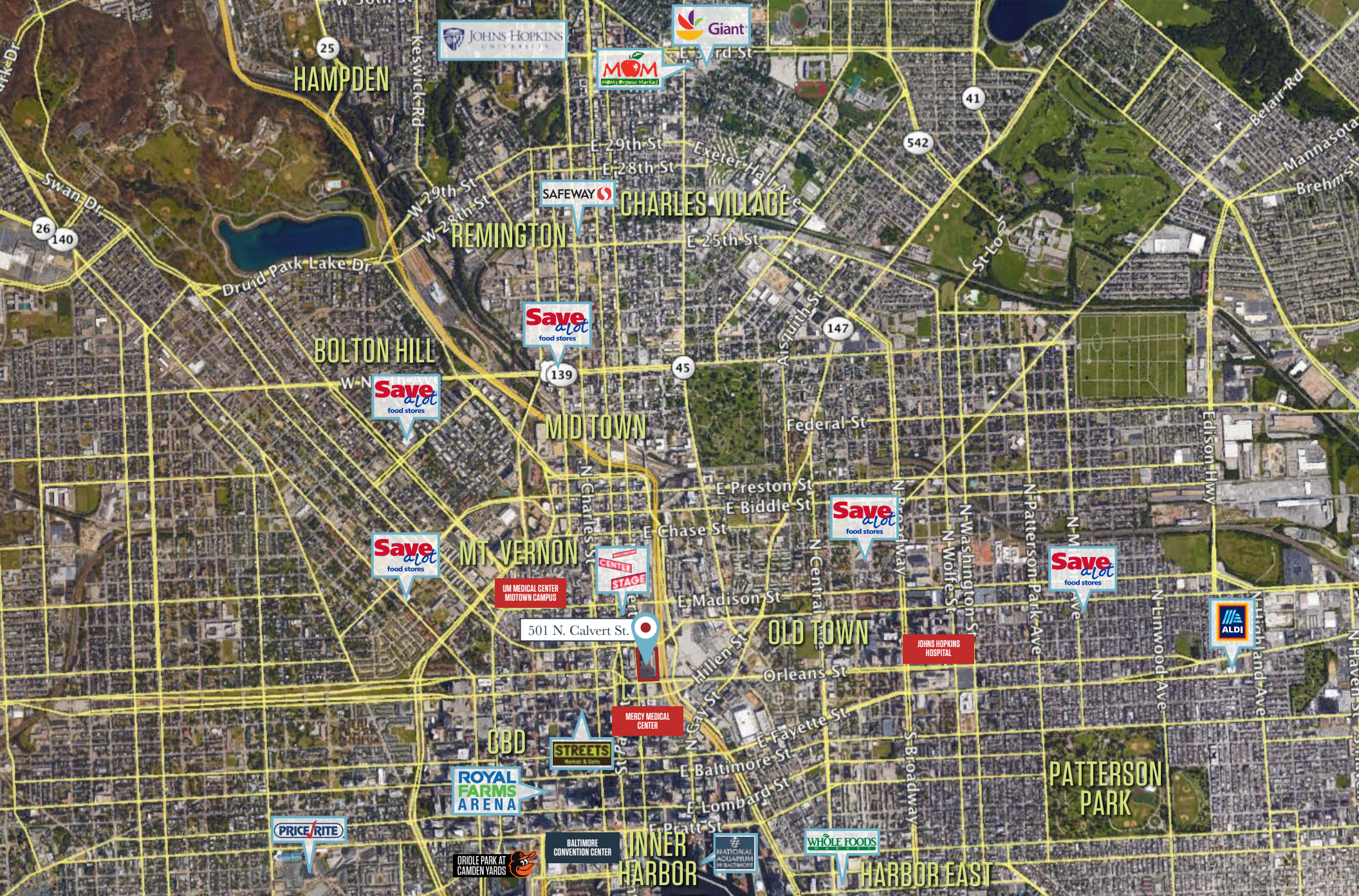
TRAFFIC COUNTS



I-83 62,590 ADT



Orleans Street 28,012 ADT

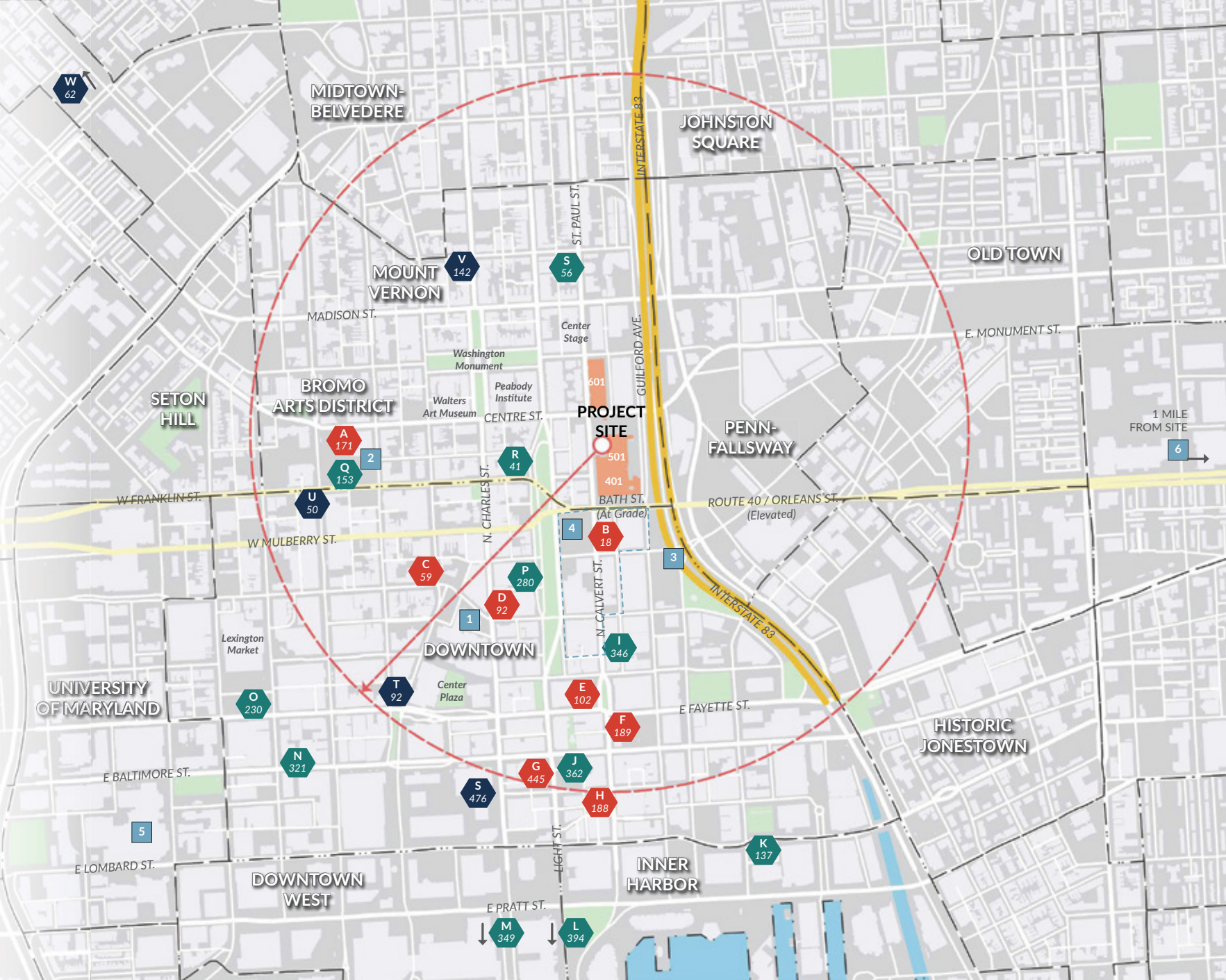


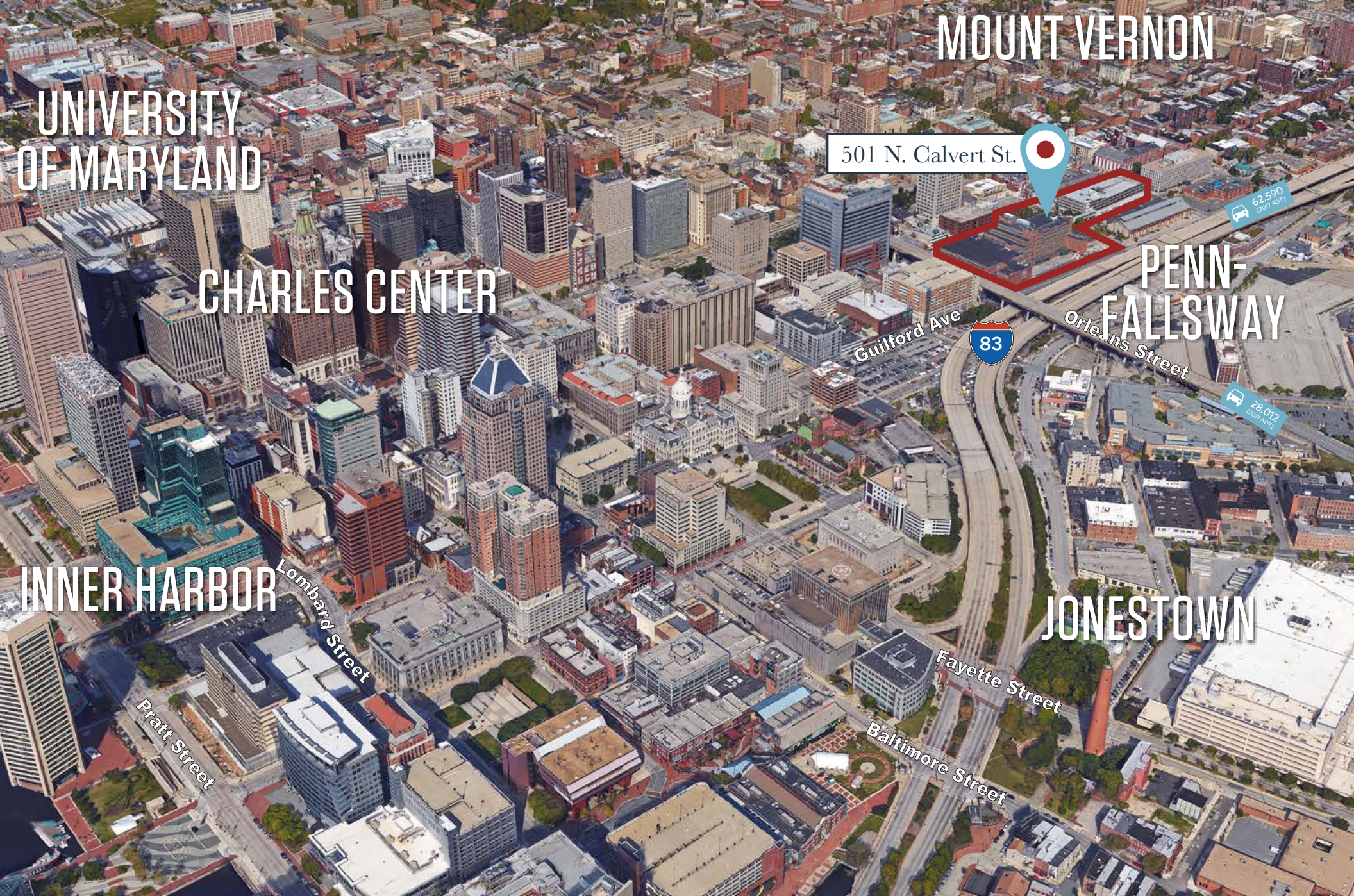
Service Venues

- Grocery / Market
- 1. Streets Market & Cafe
- 2. Mt. Vernon Marketplace
- 3. Baltimore Farmer's Market
- Hospital
- 4. Mercy Medical Center
- 5. University of MD - Baltimore
- 6. Johns Hopkins Hospital

Residential Developments

- Existing / Completed**
- A. 520 Park Avenue 171 units
- B. 344 N. Calvert Street 18 units
- C. 300 Cathedral Street 59 units
- D. 301 N. Charles Street 92 units
- E. 114 E. Lexington Street 102 units
- F. Equitable Building 189 units
- G. 10 Light Street 445 units
- H. 26 S. Calvert Street 188 units
- I. 225 N. Calvert Street 346 units
- J. 1 Light Street 362 units
- K. Appraisers Building 137 units
- L. 414 Light Street 394 units
- M. Banner Hill 349 units
- N. 325 W. Baltimore Street 321 units
- O. University Lofts 230 units
- P. 300 St. Paul Place 280 units
- Q. 500 Park Avenue 153 units
- S. 20 East Franklin 41 units
- R. Read & Calvert Streets 56 units
- T. 2,669 units
- Future**
- S. Mechanic Theatre Site 476 units
- T. Liberty & Fayette Streets 92 units
- U. 423 N. Howard Streets 50 units
- V. 814 N. Charles Street 142 units
- W. Flats at Eutaw Place 62 units
- 822 units





MOUNT VERNON

UNIVERSITY OF MARYLAND

CHARLES CENTER

501 N. Calvert St.

PENN-FALLSWAY

INNER HARBOR

JONESTOWN

62,590 (2017 ADT)

28,012 (2017 ADT)



Guilford Ave

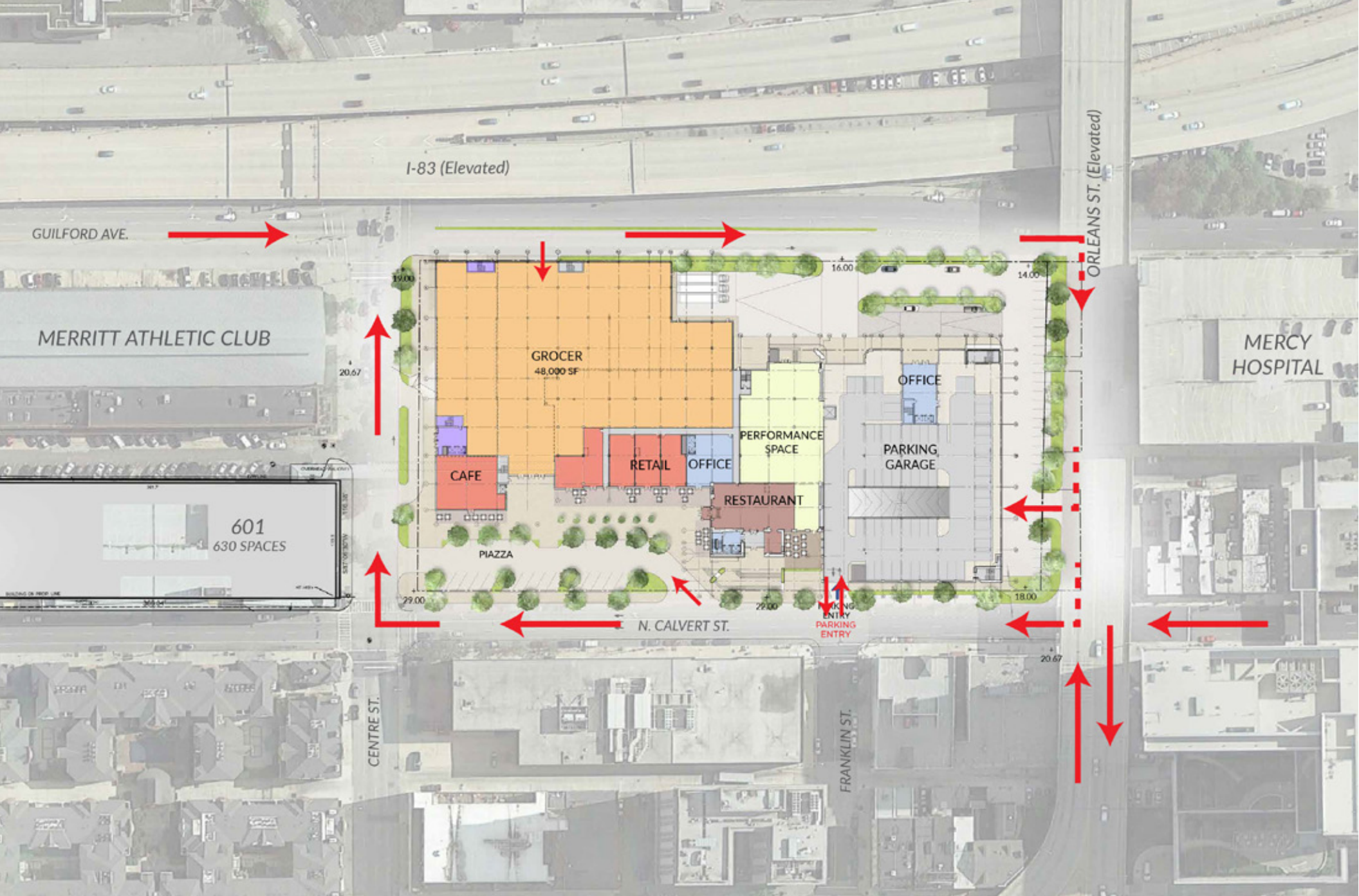
Orleans Street

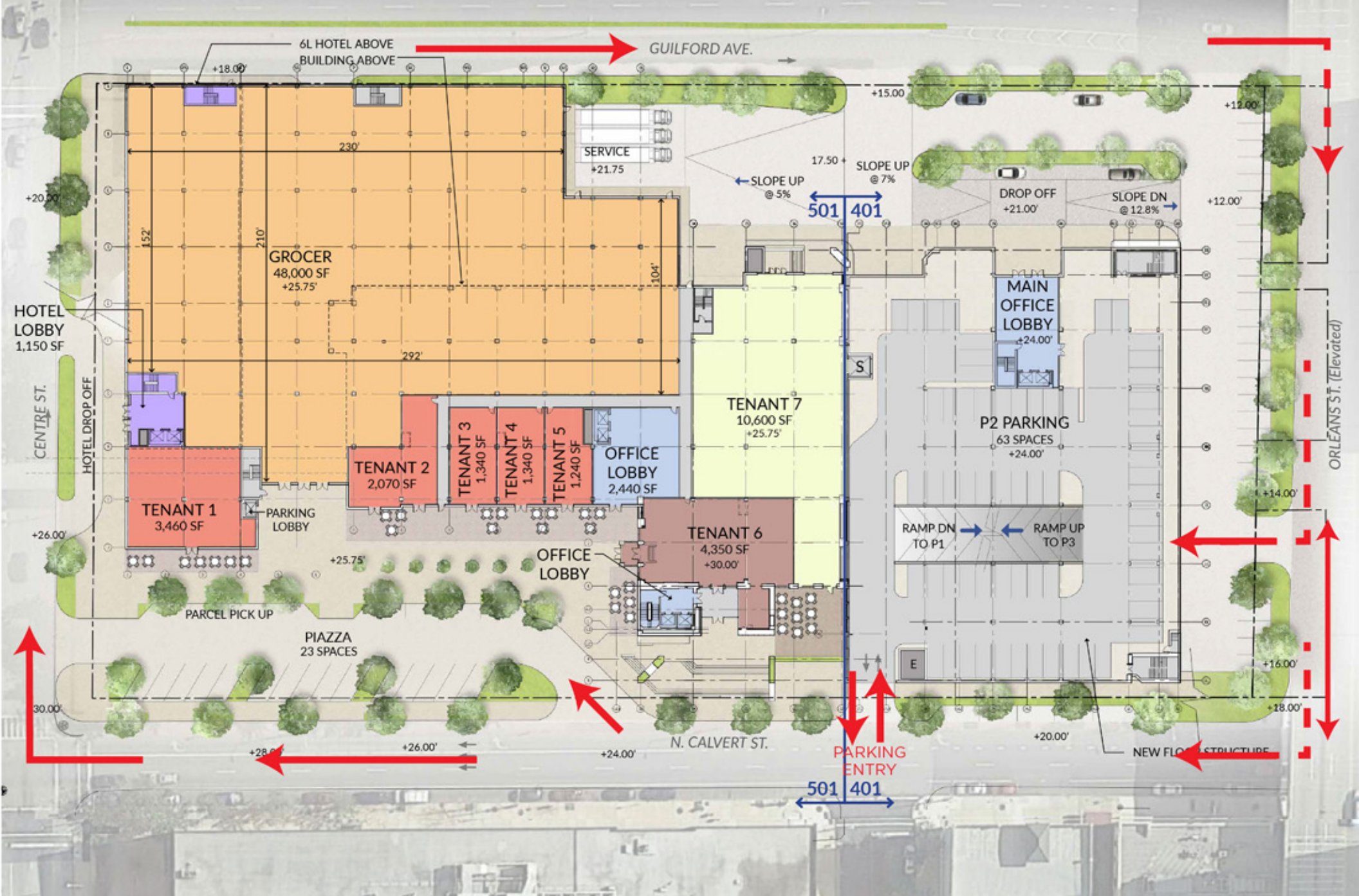
Lombard Street

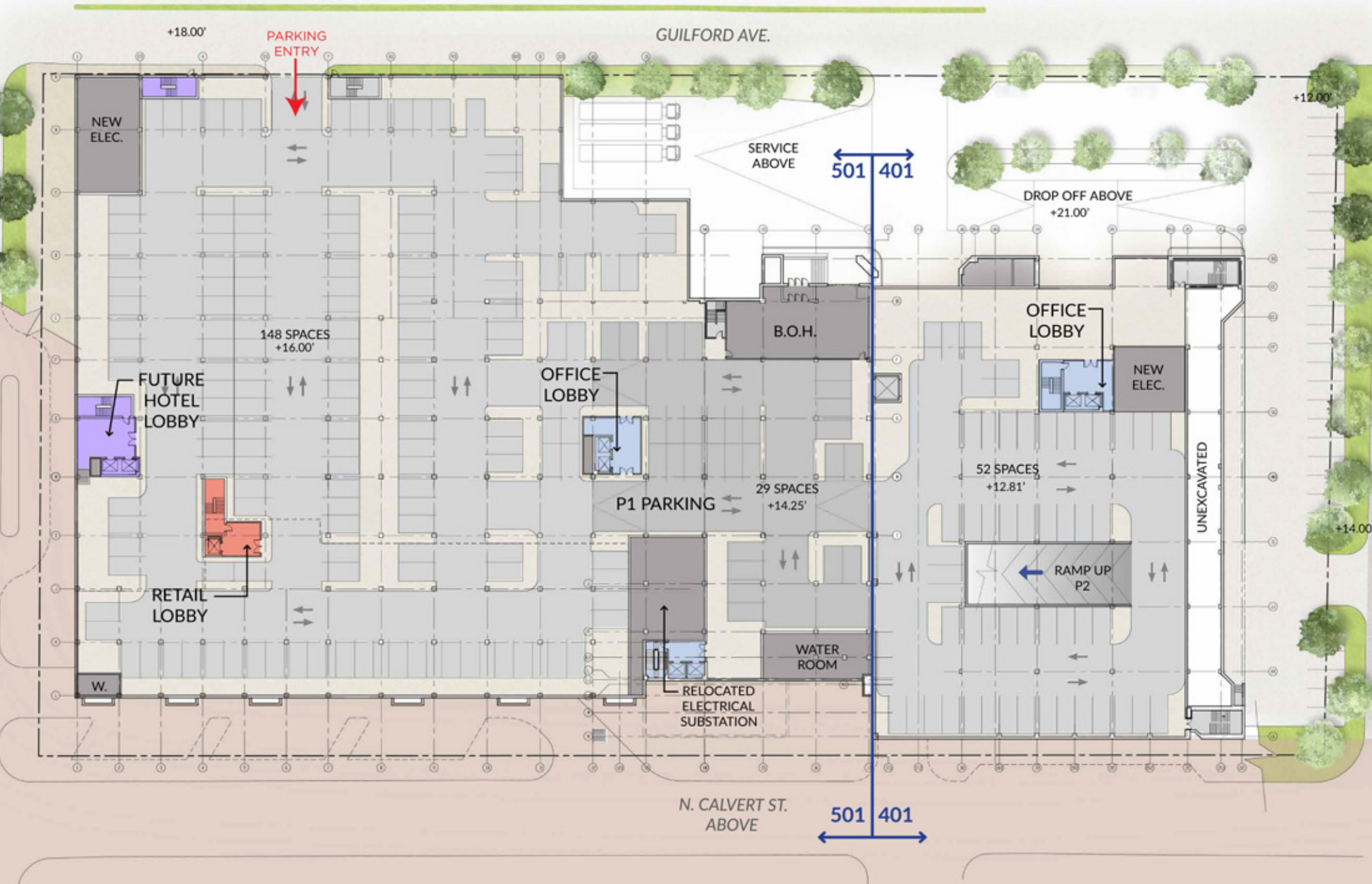
Fayette Street

Pratt Street

Baltimore Street









501 N. Calvert Street

Baltimore, Maryland 21202 | Baltimore City

MATT COPELAND
mcopeland@klnb.com
443.632.2051

BRIAN FINKELSTEIN
bfinkelstein@klnb.com
443.632.2076

100 West Road | Suite 505 | Towson, MD 21204
443.321.0100 | klnb.com



While we have no reason to doubt the accuracy of any of the information supplied, we cannot, and do not guarantee its accuracy. All information should be independently verified prior to a purchase or lease of the property. We are not responsible for errors, omissions, misuse, or misinterpretation of information contained herein and make no warranty of any kind, express or implied, with respect to the property or any other matters.



Atapco Properties, a privately held full-service commercial and residential real estate development company, has been in the real estate business for over five decades and currently owns and operates industrial, retail, office, residential and mixed-use properties in Pennsylvania, Indiana, Maryland, Virginia, and North Carolina. Our portfolio averages upwards of two million square feet of existing building space and over 625 acres of land for future development.

One South Street | Suite 2800 | Baltimore, MD 21202
410-347-7150