



NEARBY RETAILERS



RETAIL FOR LEASE

- 2,142 SF available
- Located in the heart of Locust Point, just minutes from Baltimore's most vibrant neighborhoods and attractions
- Close proximity to Interstate 95 and Baltimore-Washington Parkway
- 109 surface/covered reserved spaces

MATT COPELAND

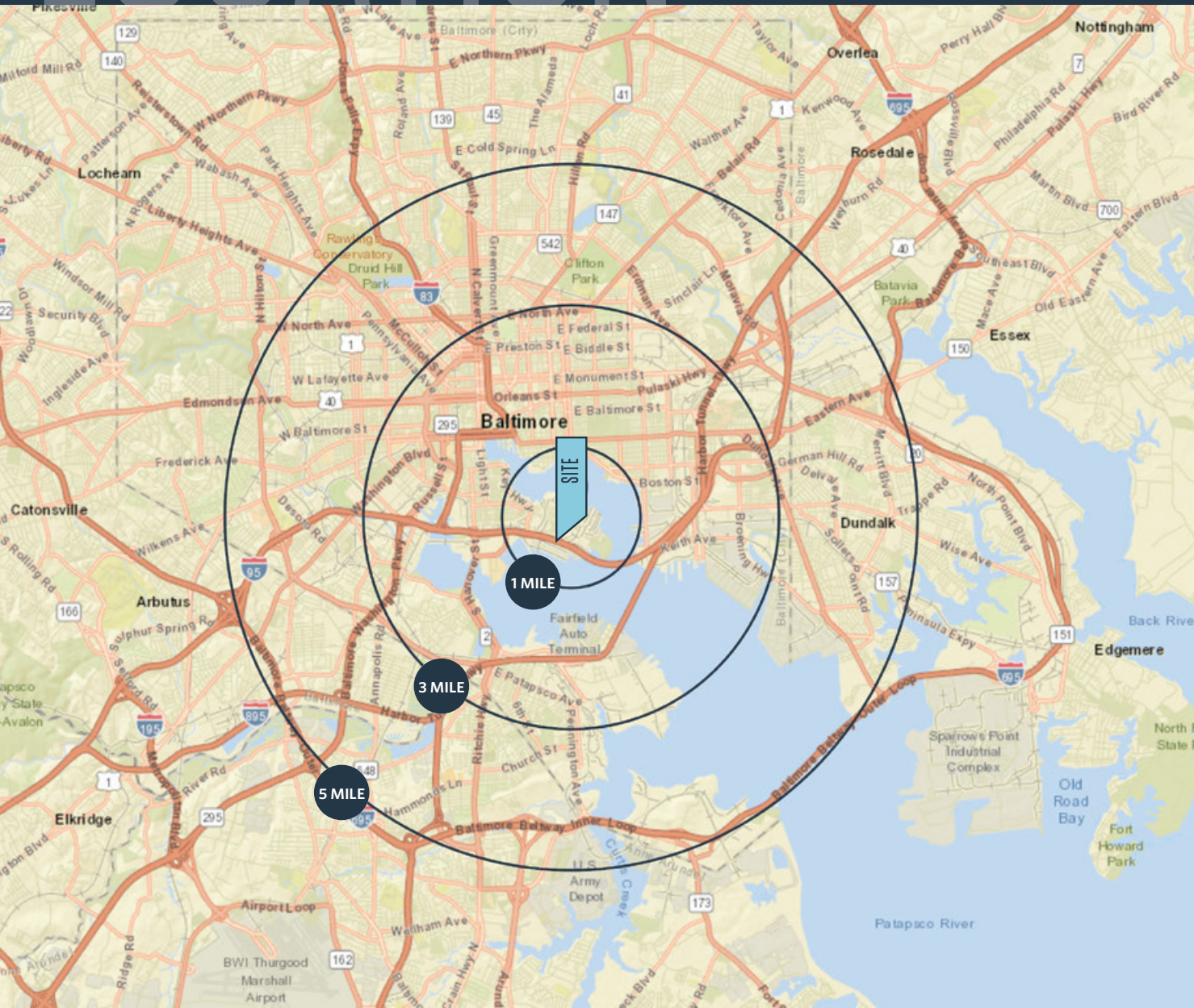
mcopeland@klnb.com | 443-632-2051

klnb.com

LOCATION

1200 STEUART STREET

BALTIMORE, MD 21230



AVAILABLE SPACE:

2,142 SF

DEMOGRAPHICS | 2020:

1-MILE	3-MILE	5-MILE
Population		
12,884	181,346	447,023
Daytime Population		
15,117	198,202	297,583
Households		
7,016	77,390	179,824
Average HH Income		
\$173,908	\$88,846	\$74,537

[CLICK TO DOWNLOAD DEMOGRAPHIC REPORT](#)

TRAFFIC COUNTS | 2019:

I-95 140,185 ADT

MATT COPELAND

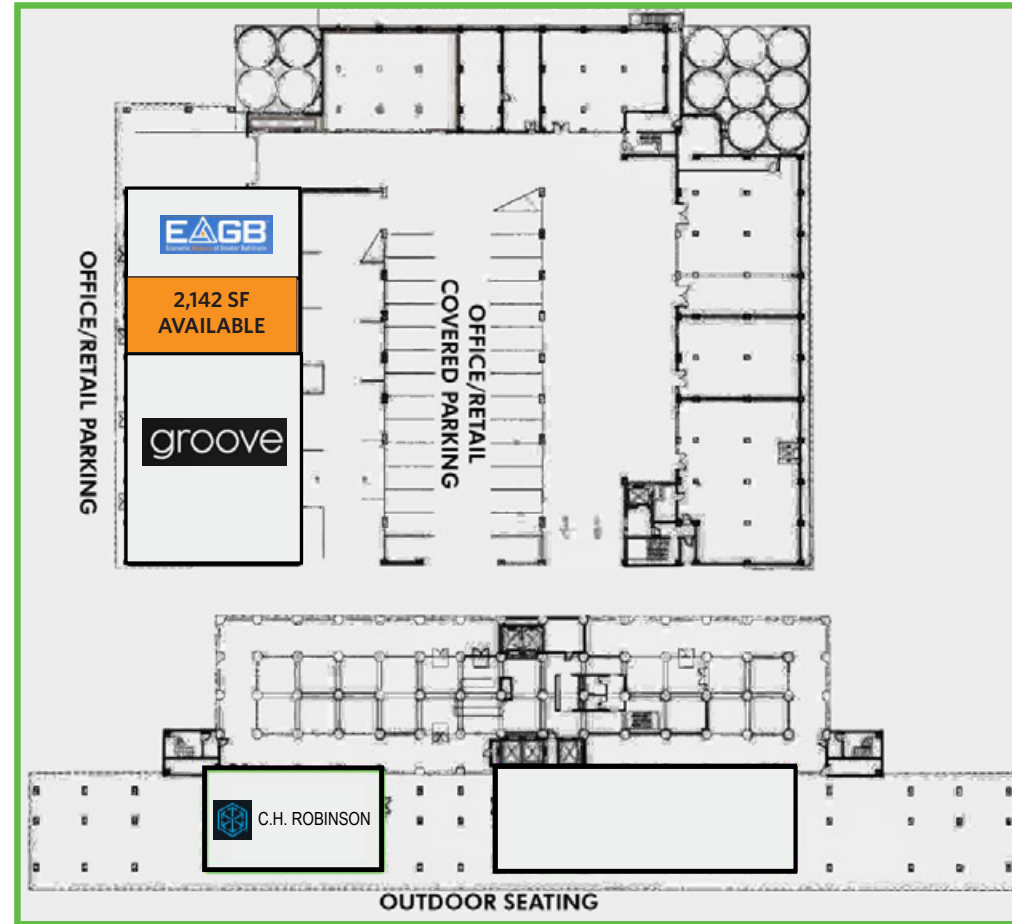
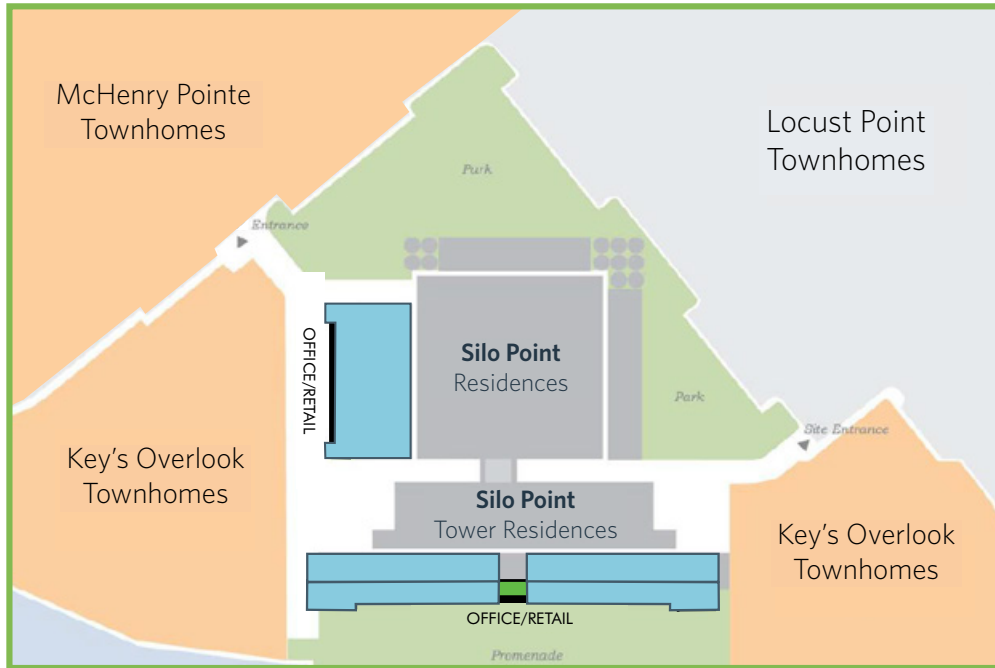
mcope land@klnb.com | 443-632-2051

klnb

SITE PLAN

1200 STEUART STREET

BALTIMORE, MD 21230



MATT COPELAND

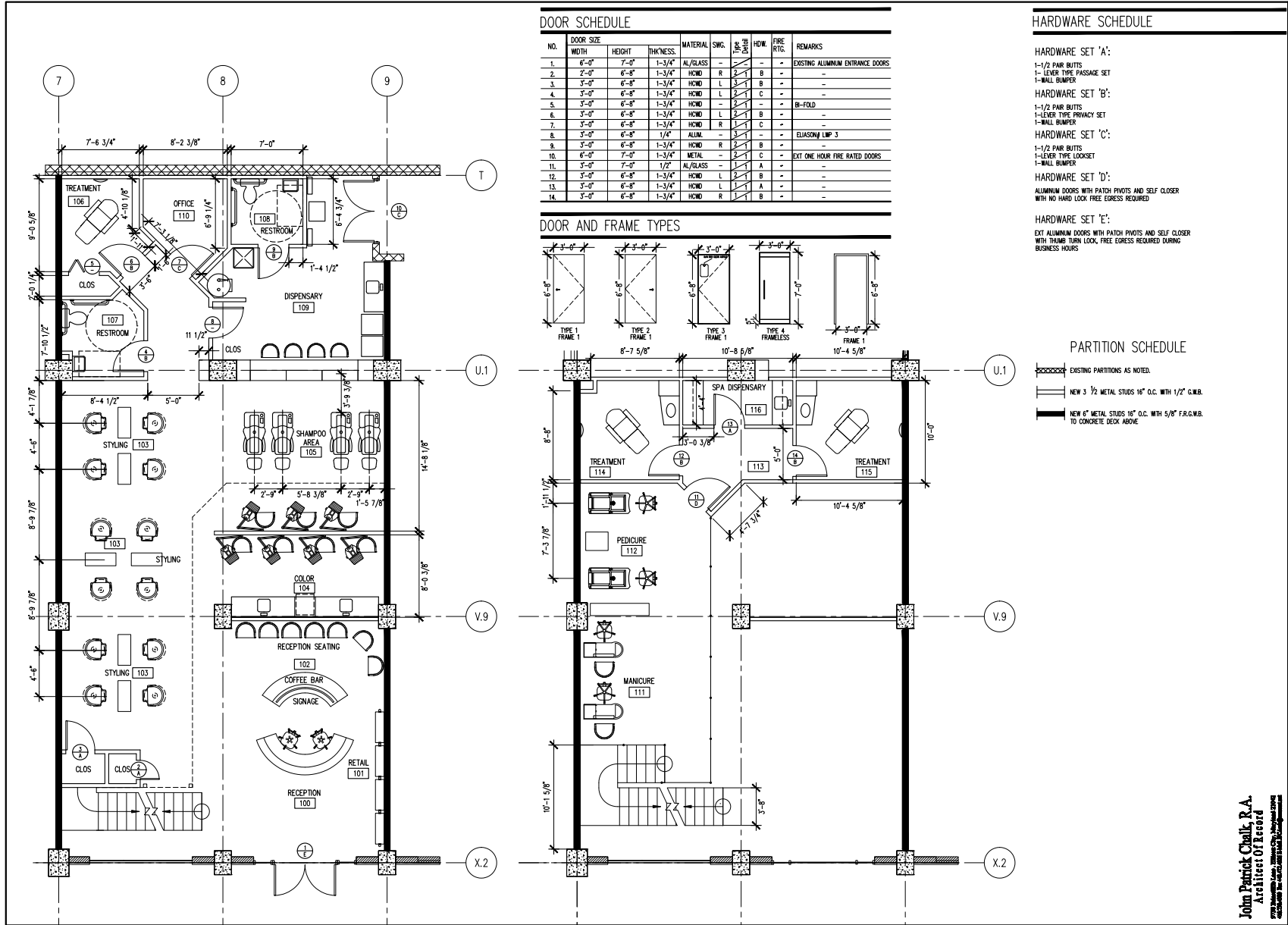
mcopeland@klnb.com | 443-632-2051



SPACE PLAN

1200 STEUART STREET

BALTIMORE, MD 21230



CREATIVE COMMERCIAL INTERIORS, LLC
 581 MANSION ROAD, SPARTANBURG, SOUTH CAROLINA 29326

FLOOR PLAN
 TENANT LAYOUT—GENERAL INTERIOR
PRIVE SALON & SPA
 1700 BEASON STREET
 BALTIMORE, MARYLAND 21230

DATE: 09/22
 DRAWN: JSD
 SCALE: AS SHOWN
 CHECKED: JSD
 DATE: 09-12-09

APPROVED BY: [Signature]

SHEET NUMBER: A-1

AERIAL

1200 STEUART STREET

BALTIMORE, MD 21230



MATT COPELAND

mcopeland@klnb.com | 443-632-2051



AERIAL

1200 STEUART STREET

BALTIMORE, MD 21230

FEDERAL HILL

SOUTHSIDE MARKETPLACE

UNDER ARMOUR HEADQUARTERS

SITE

LOCUST POINT

LEONE RIVERSIDE PARK

The Wine Market

FOUNDRY ON FORT

THE SHOPPES & OFFICES AT MCHENRY ROW



LATROBE PARK



140,185 [2019 ADT]

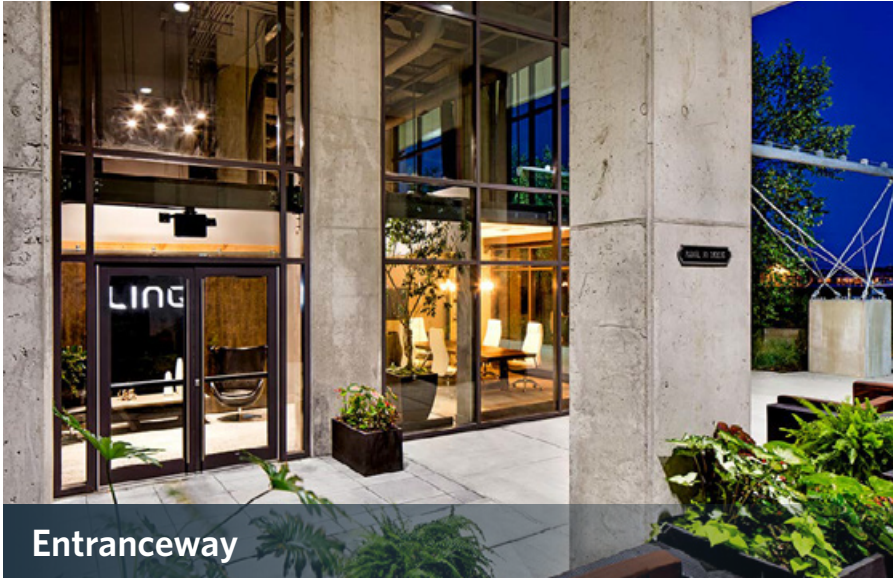
CRUISE SHIP TERMINAL

FORT MCHENRY

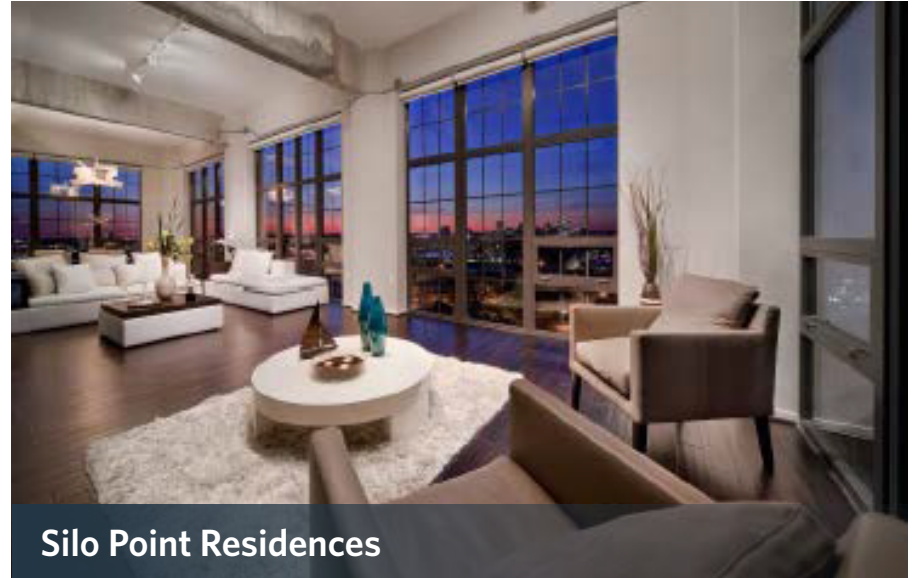
PHOTOS

1200 STEUART STREET

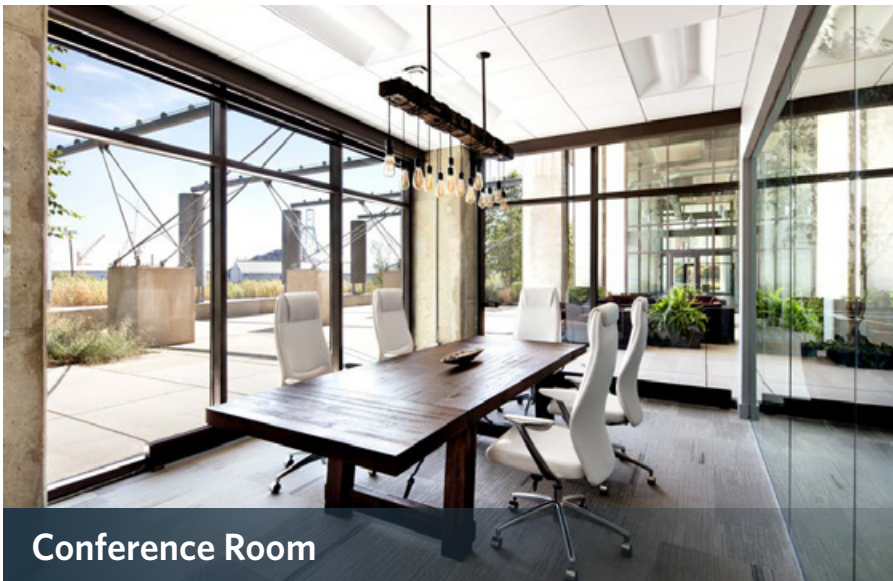
BALTIMORE, MD 21230



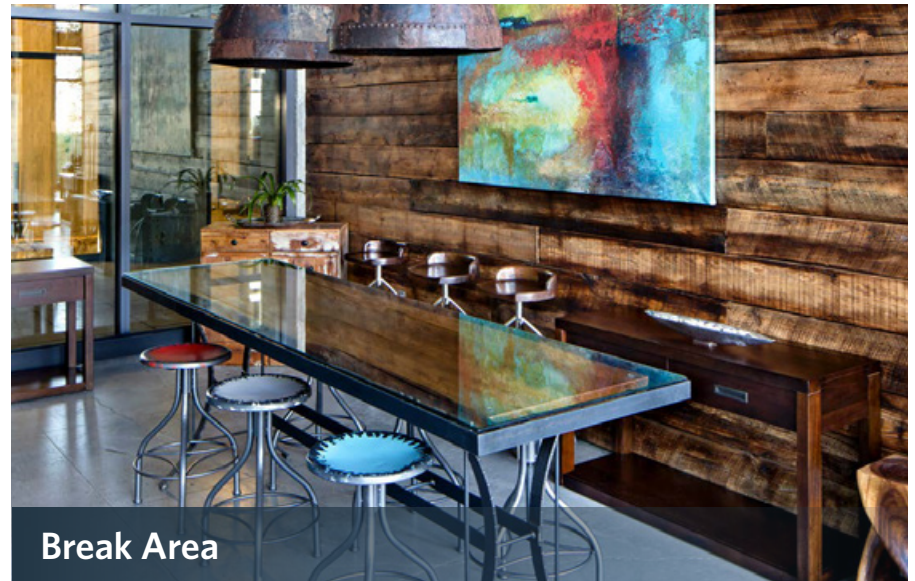
Entranceway



Silo Point Residences



Conference Room



Break Area

MATT COPELAND

mcopeland@klnb.com | 443-632-2051

klnb



1200 STEUART STREET

BALTIMORE, MD 21230

FOR MORE INFORMATION, PLEASE CONTACT:

MATT COPELAND

mcopeland@klnb.com

443-632-2051

100 West Road, Suite 505, Towson, MD 21204

.....

klnb.com

 facebook.com/KLNB

 [@KLNBLLC](https://twitter.com/KLNBLLC)

 linkedin.com/company/klnb

 instagram.com/klnbllc

[CLICK TO VIEW PROPERTY WEBSITE](#)

While we have no reason to doubt the accuracy of any of the information supplied, we cannot, and do not, guarantee its accuracy. All information should be independently verified prior to a purchase or lease of the property. We are not responsible for errors, omissions, misuse, or misinterpretation of information contained herein and make no warranty of any kind, express or implied, with respect to the property or any other matters.