



DATA CENTER FOR LEASE

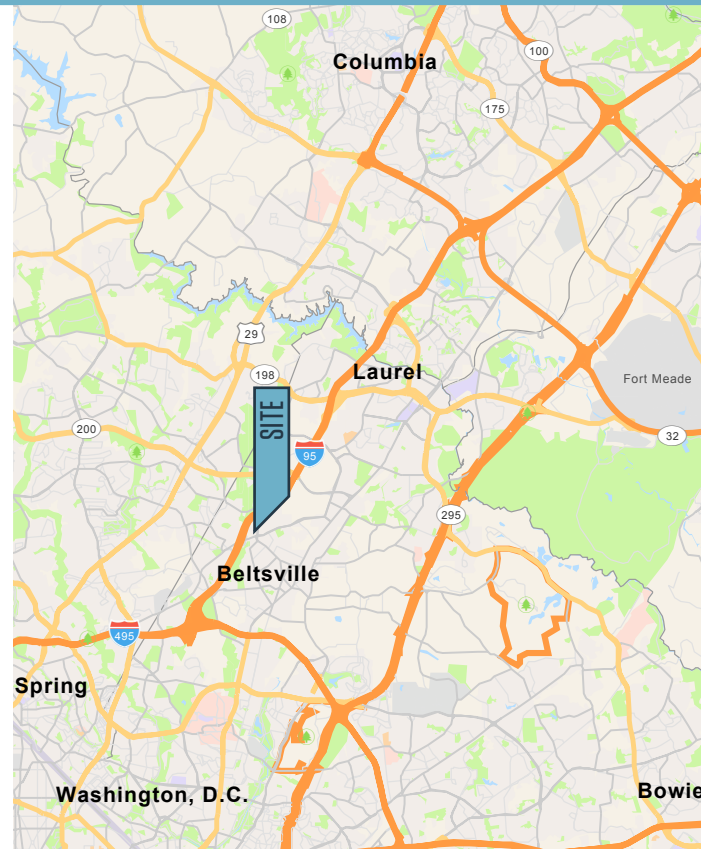
PROPERTY HIGHLIGHTS:

Building Management

- Dedicated 24x7 facilities management team
- BMS system monitors M&E operation with facility to:
 - » Ensure stability of the environment
 - » Monitor key electrical and mechanical systems
 - » Enable interface between key systems
 - » Provide data gathering
 - » Interlink life safety systems in the event of alarm activation
- Professional property management group
- Global Cloud Connect: Direct access time over 1900 locations around the world for public & multi-cloud services

Security

- Premises controlled by 24x7 on-site security personnel
- Access control using electronic key card system
- Intruder and access alarms on select areas
- Multiple CCTV camera (interior and exterior)
- Secure managed delivery and loading areas



11700 MONTGOMERY RD

Beltsville, MD 20705 | Prince George's County

ADDITIONAL HIGHLIGHTS

TECHNICAL SPECIFICATIONS

- Gross Area:** • 24,747 square feet (3.971 m²) raised floor data center (white space)
- Structure:** • Concrete tilt-up construction 9 (>6" thickness)
 - No roof penetrations or water above technical areas
 - Typical floor loading of 200 lbs/ft²
 - 16'7" of clear height
 - Raised floors with anti-static tiles and a minimum height of at least 14' to under side of deepest beam
 - 24/7 loading dock with Gated Access Control

POWER

(Mains & Emergency)

- Minimum N+1 redundancy on power supply from Utility
- Mains power supplied via diverse 2 x 13.2 kV @ 8 MW incoming feeders
- Multiple fully redundant UPS systems for true redundancy
- Multiple on-site diesel fuel tanks support > 168 hours (7 days) run time

CONTROLLED ENVIRONMENT

- Multiple chillers and cooling towers provide fully redundant cooling
- Temperature in technical space maintained at 70 degrees F (+/- 2 degrees F)
- Humidity range of 50% (+/- 10%) in technical areas
- Three (3) air-cooled chillers installed supplying 250 tons (3 MM BTU) of cooling per chiller
- CRAHs provide conditioned air into technical spaces
- Diverse chilled water distribution throughout facility

FIRE DETECTION & SUPPRESSION

- Analog addressable fire detection system in all areas (smoke and heat manual pull units)
- Very early smoke detection and alarm system (VESDA) in the technical areas
- Gas suppression system to all technical, critical, and selected operational areas
- Sprinklers in corridors, media storage and selected plant rooms with water or HALON and monitoring as required
- ANSI/BICSI/TIA compliant MDF; Copper and Fiber distribution systems
- Smoke and gas extraction systems

TELECOMMUNICATIONS

- Access to multiple telecommunications providers located in dedicated Meet Me Rooms (MMRs). Via diverse dedicated connections.
- Diverse cable entry points (x4) with combination of 8" concrete PVC conduit and 1.5" inner ducts
- Steel conduit (EMT) in sealed access configuration to all customer controlled areas
- Multiple connection points to each suite and cage
- Roof space available for satellite and antenna equipment

ADDITIONAL SERVICES

- Private office space can be built out to customer specifications

Chuck Breitenother

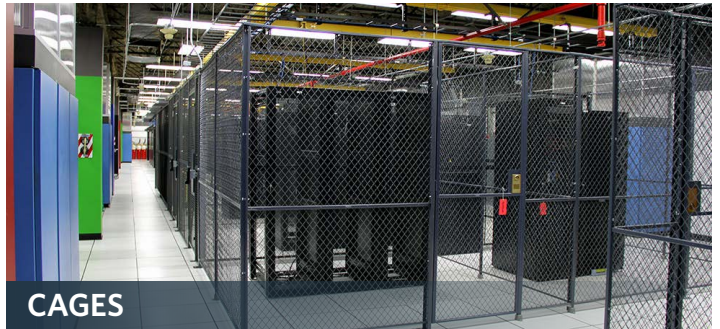
cbreitenother@klnb.com

443-574-1422

PHOTOS



RECEPTION AREA



CAGES



RACKS



COOLING



NOC/SOC



HALLWAY



STRATEGY CONFERENCE ROOM



TARDIS CONFERENCE ROOM

11700 MONTGOMERY RD
Beltsville, MD 20705 | Prince George's County



PRICING

50 KW MINIMUM OF POWER USE

- \$150/month per KW
- Typically: 25-50 racks

250 KW MINIMUM OF POWER USE

- \$125/month per KW
- Typically: 100-300 racks

PROMOTIONAL CROSS-CONNECT OPTIONS

- 1 Gbps to Equinix = \$1500 / month
- 10 Gbps direct to 1900+ Global Cloud Connect locations (any global data center) = \$4500 / month

[CLICK TO VIEW PROPERTY WEBSITE](#)

For More Information, Please Contact:

Chuck Breitenother

cbreitenother@klnb.com

443-574-1422

6011 University Boulevard, Suite 350
Ellicott City, MD 21043

klnb.com



facebook.com/KLNB



[@KLNBLLC](https://twitter.com/KLNBLLC)



linkedin.com/company/klnb



instagram.com/klnblc

While we have no reason to doubt the accuracy of any of the information supplied, we cannot, and do not, guarantee its accuracy. All information should be independently verified prior to a purchase or lease of the property. We are not responsible for errors, omissions, misuse, or misinterpretation of information contained herein and make no warranty of any kind, express or implied, with respect to the property or any other matters.