



**YOUR SIGN  
HERE**

**LIQUOR-WINE**

8719

PARKING  
IN  
REAR

## JOIN THESE RETAILERS

**CAVA**  
Mezze Grill



**TJ-maxx** sweetgreen **CVS**  
pharmacy

## PROPERTY DETAILS

- Rare opportunity for large 12,381 SF block of space in downtown Silver Spring
  - 2,097 SF Street Level
  - 10,284 SF Lower Level
- Prime Signage opportunity in Colesville Rd 28,001 ADT
- Steps from the newly renovated Ellsworth Place and Downtown Silver Spring
- Parking opportunity in the rear of the property

**MATT SKALET**

maskalet@kl**nb**.com | 202-420-7775

**BEN BECKER**

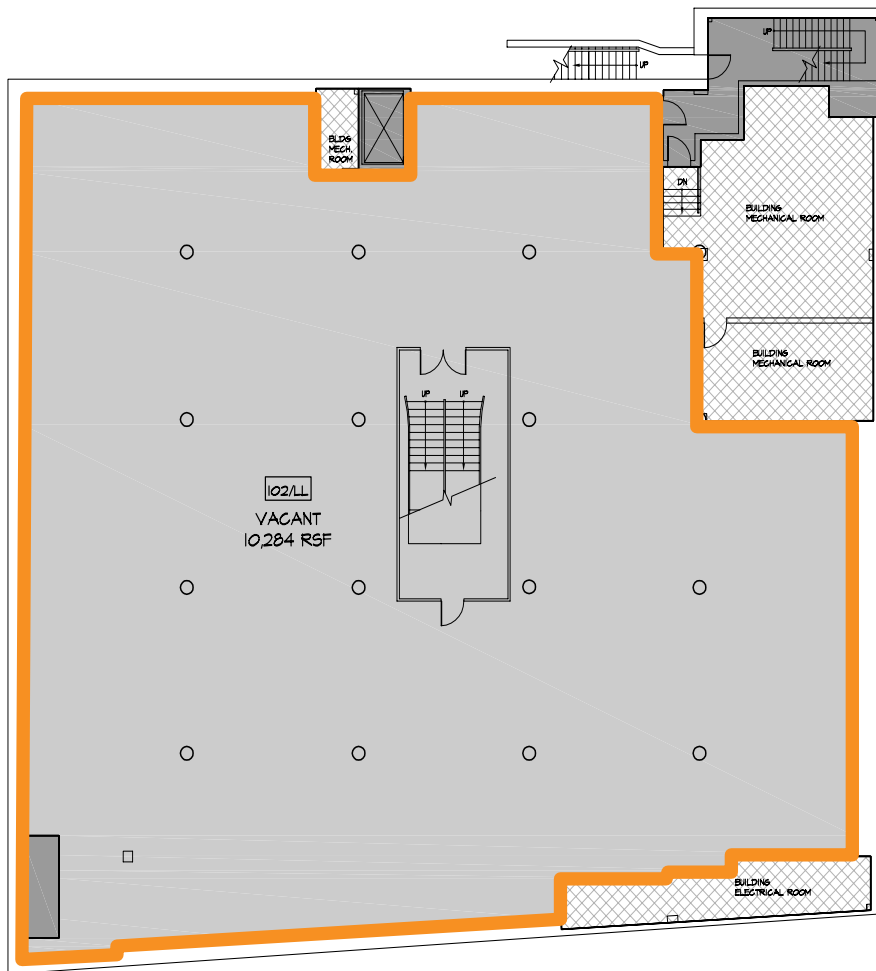
bbecker@kl**nb**.com | 202-420-7773

# SPACE PLAN

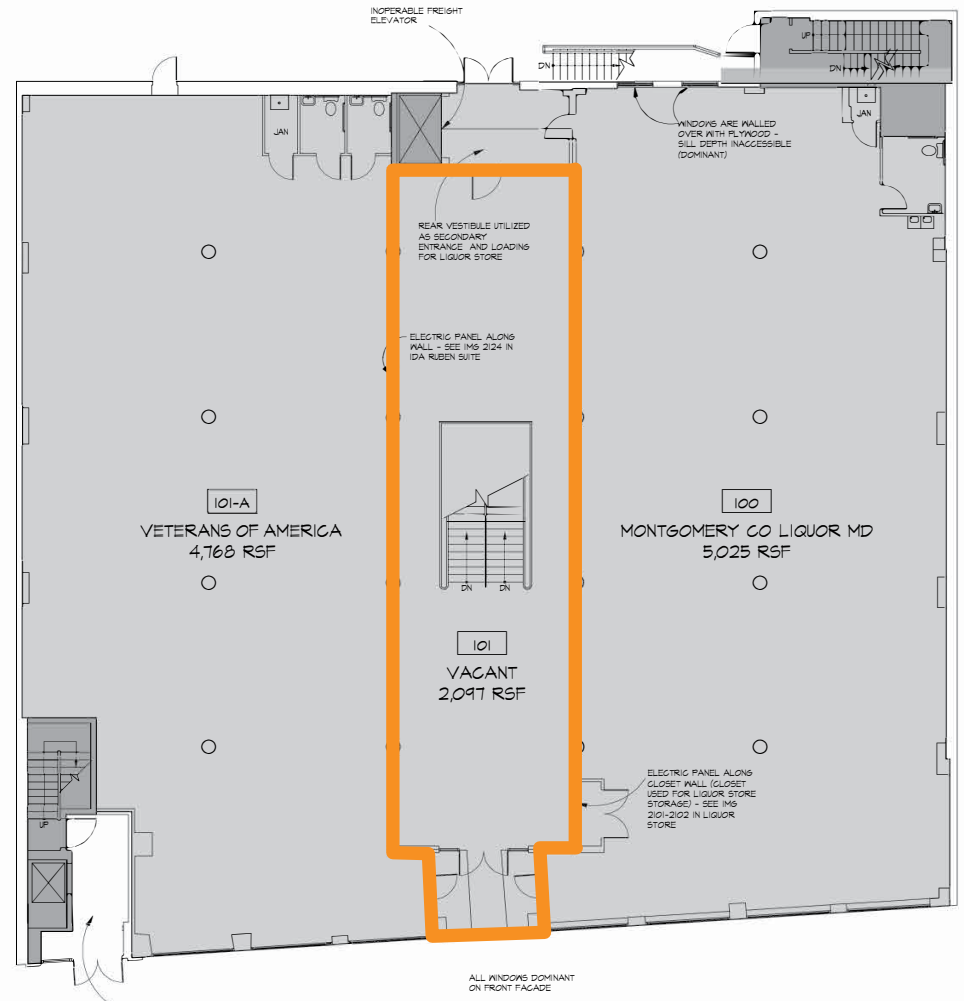
# 8719 COLESVILLE RD

8719 COLESVILLE RD, SILVER SPRING, MD 20910

## LOWER LEVEL | 10,284 SF



## STREET LEVEL | 2,097 SF



**MATT SKALET**

maskalet@klnb.com | 202-420-7775

**BEN BECKER**

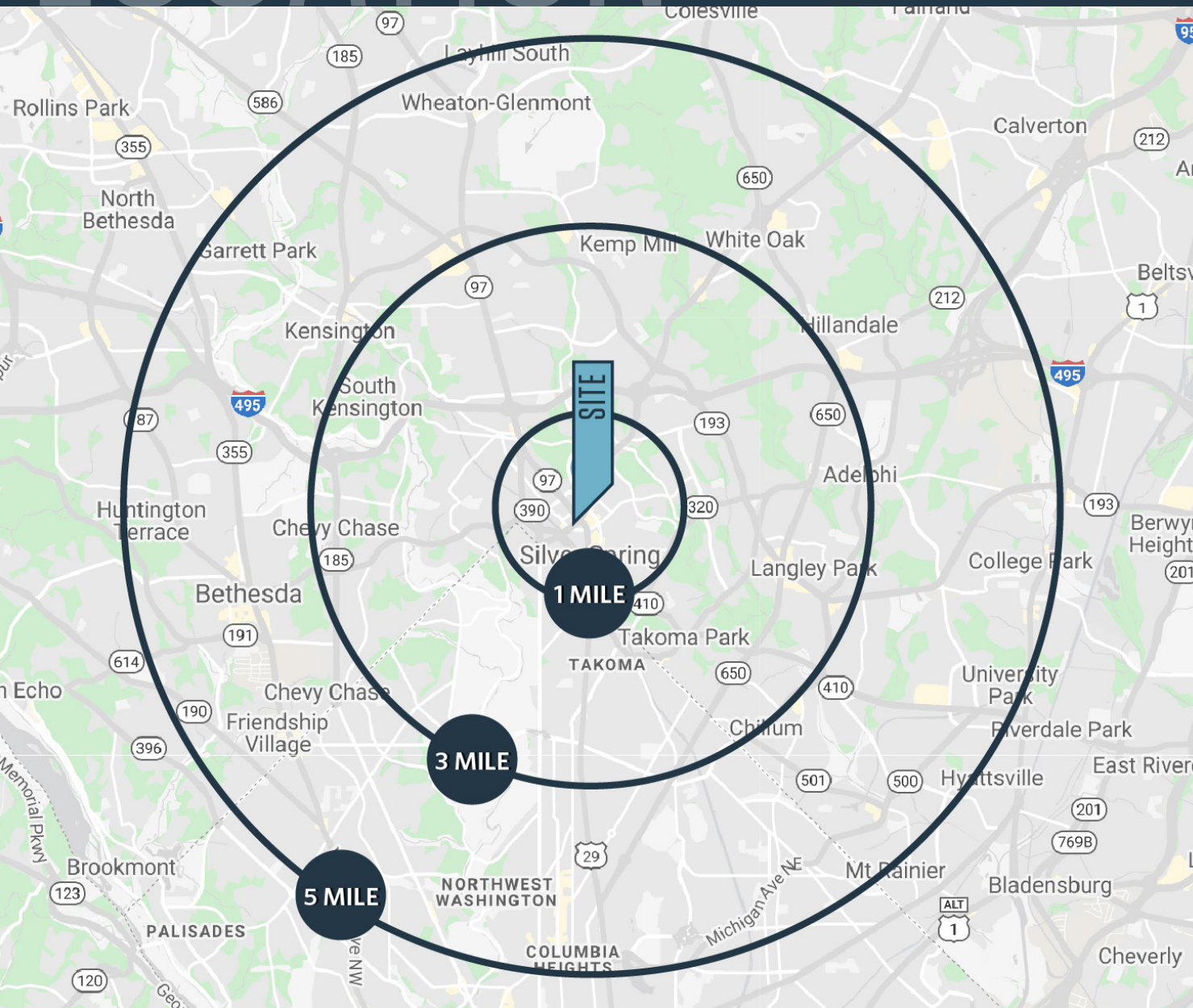
bbecker@klnb.com | 202-420-7773



# LOCATION

# 8719 COLESVILLE RD

8719 COLESVILLE RD, SILVER SPRING, MD 20190



SIZE	AVAILABLE
12,381 SF	IMMEDIATELY

## DEMOGRAPHICS | 2020:

	1 MILE	3 MILE	5 MILE
Population	38,313	231,083	599,560
Daytime Population	23,065	65,011	274,373
Households	19,054	86,516	228,742
Average HH Income	\$114,100	\$126,383	\$135,635

## TRAFFIC COUNTS | 2020:

Colesville Rd	28,001 (ADT)
Fenson St	10,571 (ADT)
Spring St	9,811 (ADT)

**MATT SKALET**

maskalet@klnb.com | 202-420-7775

**BEN BECKER**

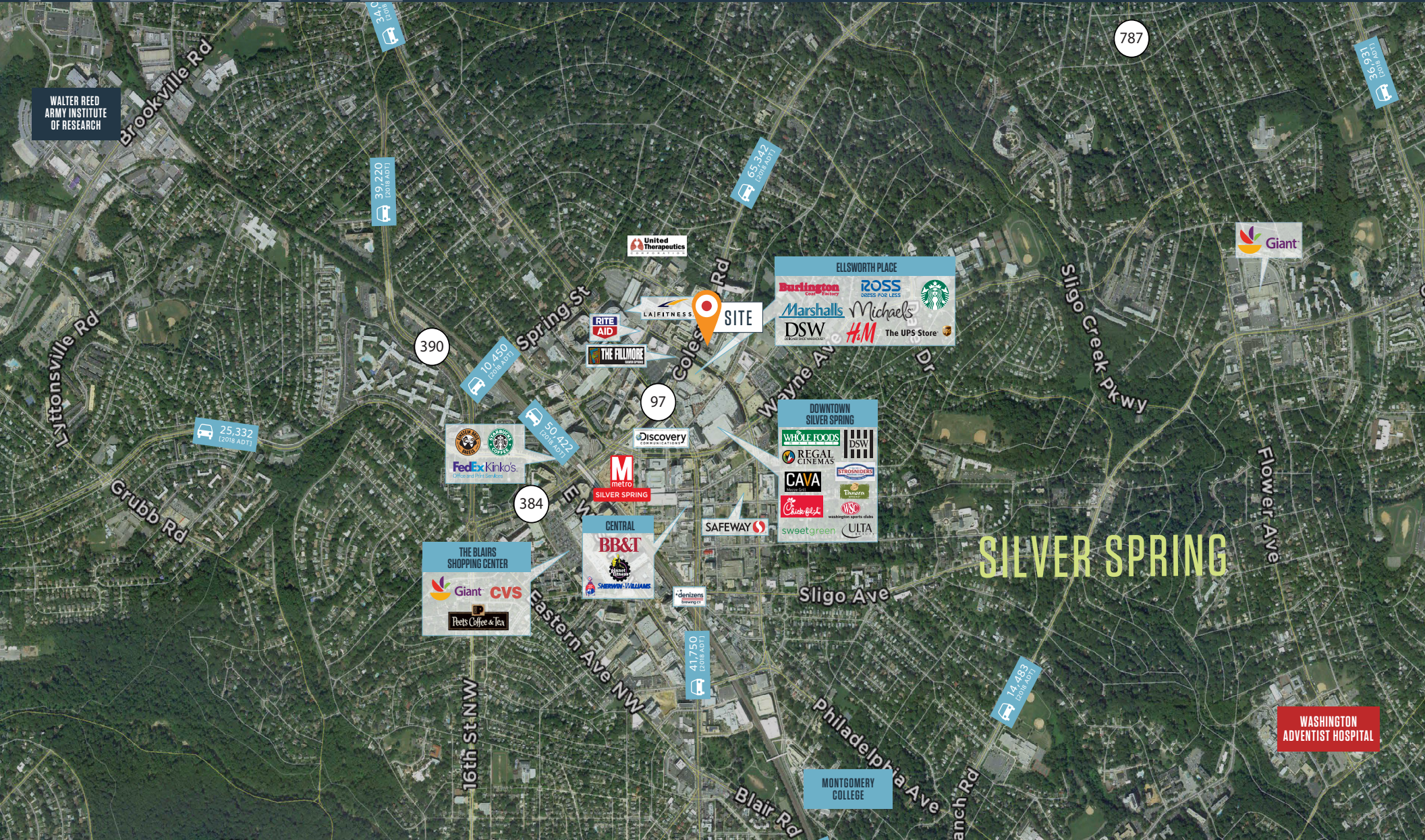
bbecker@klnb.com | 202-420-7773



# AERIAL

# 8719 COLESVILLE RD

8719 COLESVILLE RD, SILVER SPRING, MD 20910



**MATT SKALET**

maskalet@klnb.com | 202-420-7775

**BEN BECKER**

bbecker@klnb.com | 202-420-7773



# PHOTOS

## 8719 COLESVILLE RD

8719 COLESVILLE RD, SILVER SPRING, MD 20910



**MATT SKALET**

[maskalet@klnb.com](mailto:maskalet@klnb.com) | 202-420-7775

**BEN BECKER**

[bbecker@klnb.com](mailto:bbecker@klnb.com) | 202-420-7773

**klnb**



# 8719 COLESVILLE RD

8719 COLESVILLE RD, SILVER SPRING, MD 20910

## FOR MORE INFORMATION, PLEASE CONTACT:

### MATT SKALET

mskalet@klnb.com | 202-420-7775

### BEN BECKER

bbecker@klnb.com | 202-420-7773

1130 Connecticut Avenue, Suite 600, Washington, D.C. 20036

.....

[klnb.com](http://klnb.com)



[CLICK TO VIEW PROPERTY WEBSITE](#)

While we have no reason to doubt the accuracy of any of the information supplied, we cannot, and do not, guarantee its accuracy. All information should be independently verified prior to a purchase or lease of the property. We are not responsible for errors, omissions, misuse, or misinterpretation of information contained herein and make no warranty of any kind, express or implied, with respect to the property or any other matters.