



FOR SALE!

NEARBY RETAILERS



RETAIL FOR SALE

- Former Ruby Tuesday building for lease
- 5,672 SF on 1.34 acres
- All FF&E included
- Well located in the middle of the US Route 40/ Pulaski Highway retail corridor
- Corner of a highly visible right-in, right-out Route 40 access point in the middle of the center
- Year Built: 2005
- Zoning: C2 Commercial
- County: Cecil County
- Sub Market: Elkton

MATT COPELAND

mcopeland@klnb.com | 443-632-2051

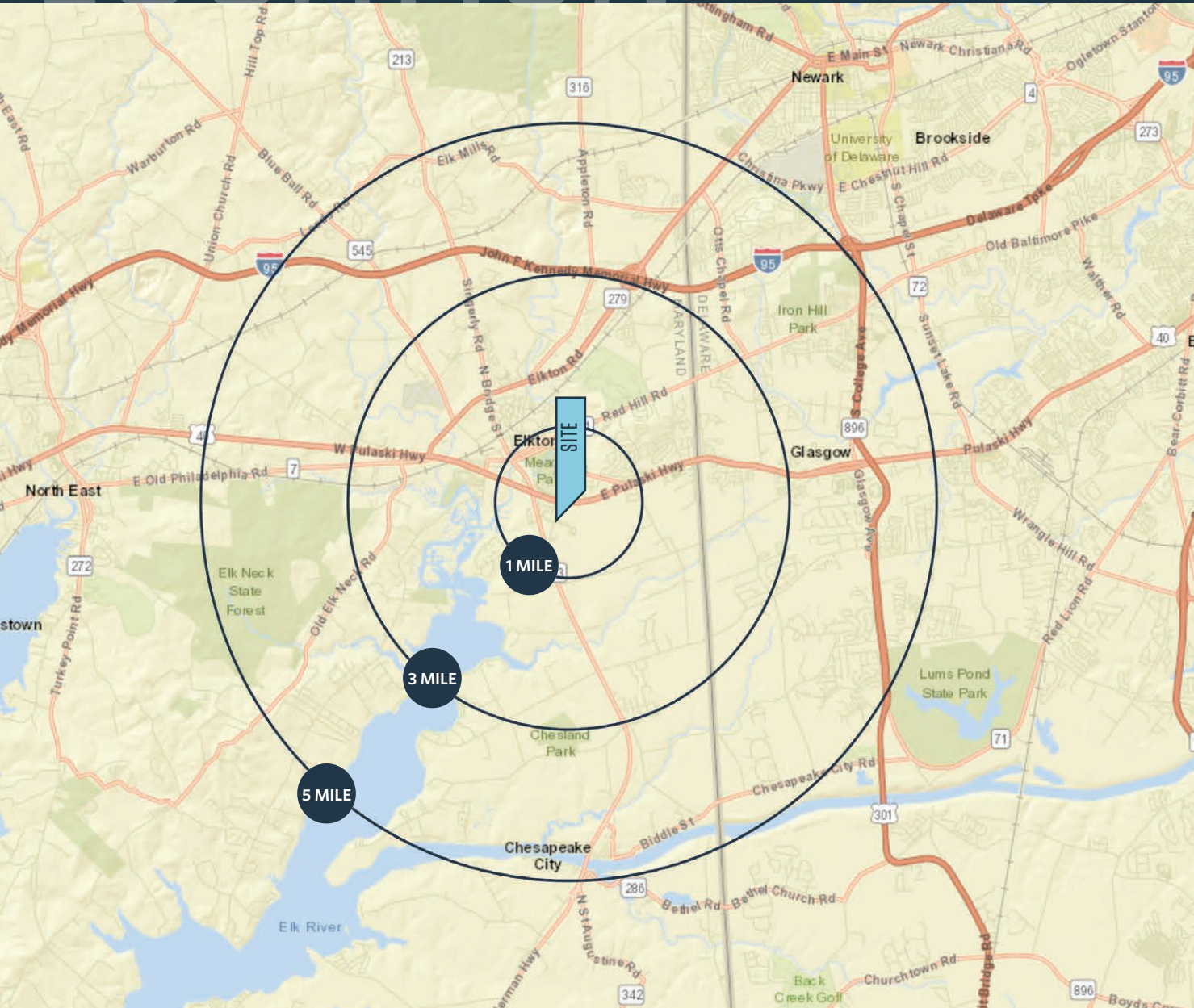
ALEX SHEARER

ashearer@klnb.com | 443-632-2081

LOCATION

312 E PULASKI HWY

ELKTON, MD 21921, CECIL COUNTY



DEMOGRAPHICS | 2020:

	1-MILE	3-MILE	5-MILE
Population	5,312	24,210	61,335
Daytime Population	4,254	12,409	26,449
Households	2,005	8,612	22,337
Average HH Income	\$80,361	\$82,550	\$96,484

[CLICK TO DOWNLOAD DEMOGRAPHIC REPORT](#)

TRAFFIC COUNTS | 2019:

Pulaski Hwy	30,731 ADT
Whitehall Rd	6,622 ADT

MATT COPELAND

mcopeland@klnb.com | 443-632-2051

ALEX SHEARER

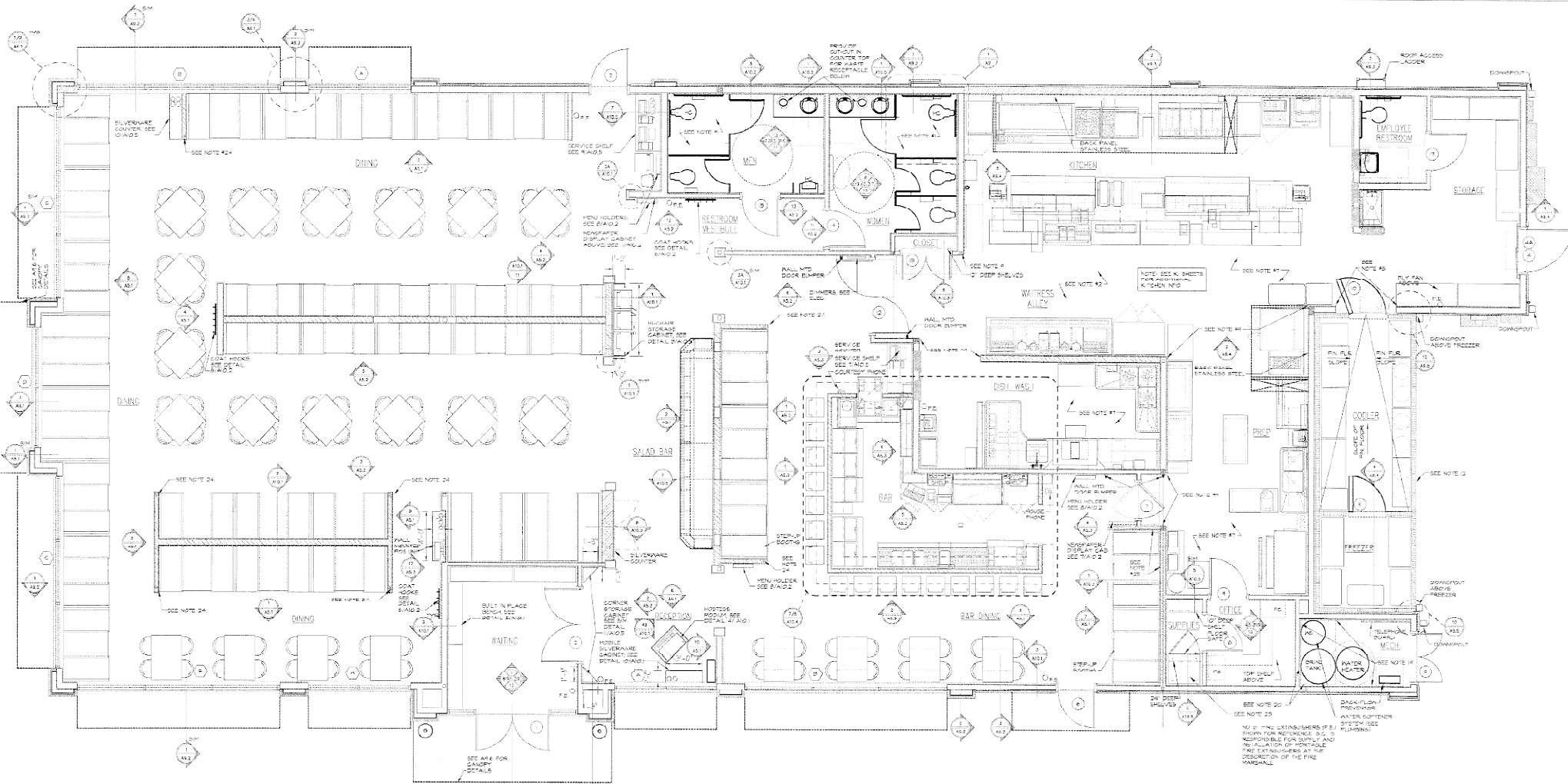
ashearer@klnb.com | 443-632-2081

klnb

SITE PLAN

312 E PULASKI HWY

ELKTON, MD 21921, CECIL COUNTY



ARCHITECTURAL FLOOR PLAN

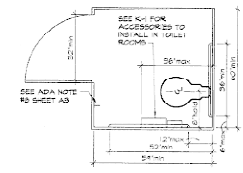
SCALE: 1/8"=1'-0"

EXTERIOR WAITING AREA

SEE AREA FOR CANOPY DETAILS

GENERAL NOTES

1. USE ONLY MOISTURE RESISTANT DRYWALL IN REST ROOMS AND ALL BATHROOMS AND ALL WALLS AND CEILING IN ALL RESTROOMS.
2. ALL WOOD BLOCKING IN REST ROOMS AND ALL NON-FIRE RATED AREAS SHALL BE INSTALLED TO MEET ALL APPLICABLE CODES.
3. OMITTED



TYP. H.C. STALL PLAN

MATT COPELAND

mcopeland@klnb.com | 443-632-2051

ALEX SHEARER

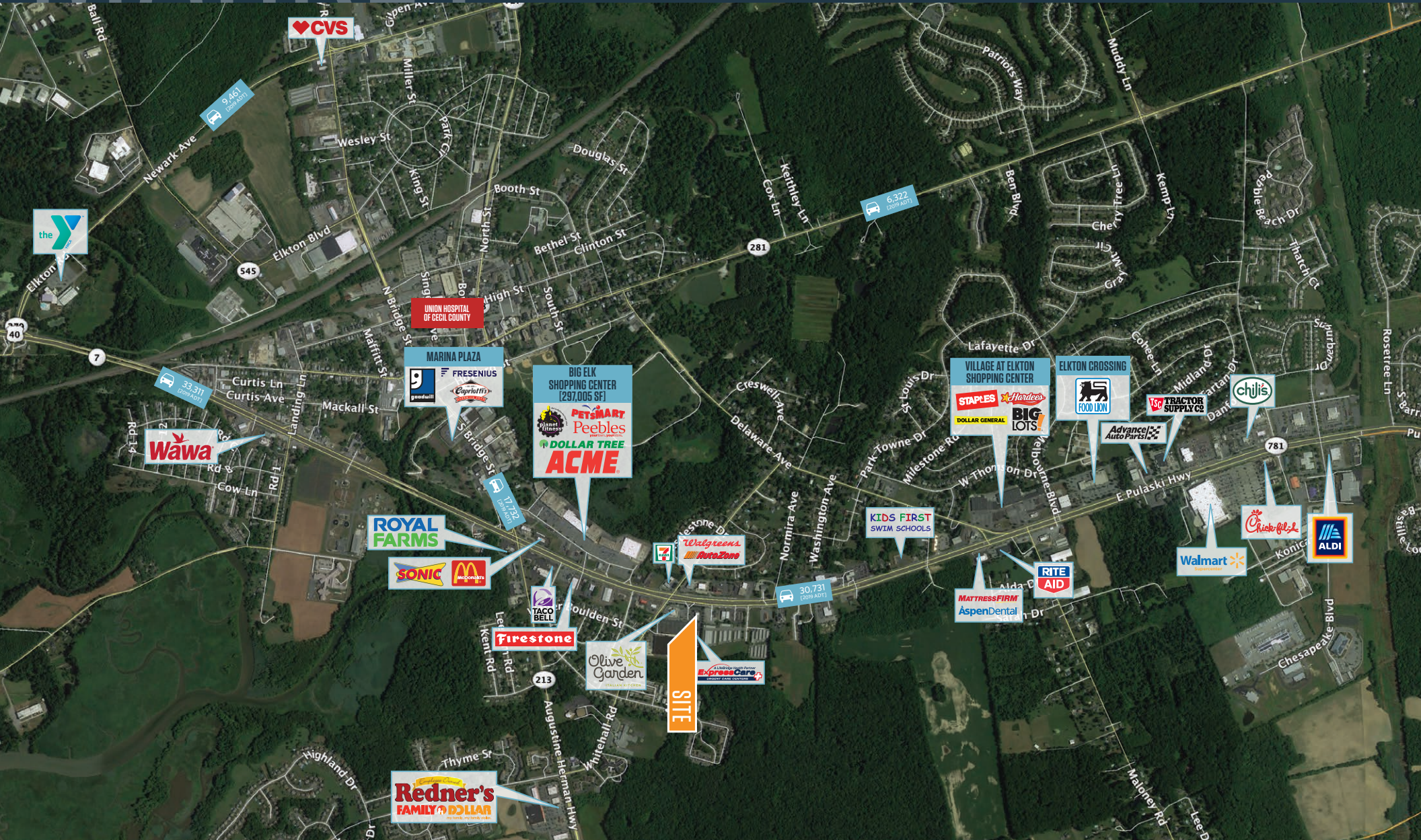
ashearer@klnb.com | 443-632-2081

klnb

MARKET

312 E PULASKI HWY

ELKTON, MD 21921, CECIL COUNTY



MATT COPELAND

mcopeland@klnb.com | 443-632-2051

ALEX SHEARER

ashearer@klnb.com | 443-632-2081

klnb

CLOSE-UP

312 E PULASKI HWY

ELKTON, MD 21921, CECIL COUNTY



MATT COPELAND

mcopeland@klnb.com | 443-632-2051

ALEX SHEARER

ashearer@klnb.com | 443-632-2081

klnb

PHOTOS

312 E PULASKI HWY

ELKTON, MD 21921, CECIL COUNTY



MATT COPELAND

mcopeland@klnb.com | 443-632-2051

ALEX SHEARER

ashearer@klnb.com | 443-632-2081

klnb



312 E PULASKI HWY

ELKTON, MD 21921, CECIL COUNTY

FOR MORE INFORMATION, PLEASE CONTACT:

MATT COPELAND

mcopeland@klnb.com

443-632-2051

ALEX SHEARER

ashearer@klnb.com

443-632-2081

100 West Road, Suite 505, Towson, MD 21204

.....

klnb.com

 facebook.com/KLNB

 [@KLNBLLC](https://twitter.com/KLNBLLC)

 linkedin.com/company/klnb

 instagram.com/klnbllc

CLICK TO VIEW PROPERTY WEBSITE

While we have no reason to doubt the accuracy of any of the information supplied, we cannot, and do not, guarantee its accuracy. All information should be independently verified prior to a purchase or lease of the property. We are not responsible for errors, omissions, misuse, or misinterpretation of information contained herein and make no warranty of any kind, express or implied, with respect to the property or any other matters.