

8528 BALTIMORE NATL PIKE

8528 Baltimore National Pike, Ellicott City, MD 21043
Howard County



JOIN NEARBY RETAILERS:



- New pad site to be created
- Light controlled intersection of Normandy Center Drive
- 1 Acre ± [275 Ft. X 160 Ft.] - Zoned highway commercial B-2 [Allows for most retail commercial uses including drive-thrus]
- Excellent site lines and visibility to site
- Excellent access and cross egress to traffic light
- Highly sought after, under retail super regional market - at intersection of Route 40 & Route 29, servicing all of Howard County and Western Baltimore County

Patrick Miller
pmiller@klnb.com
443-632-2042

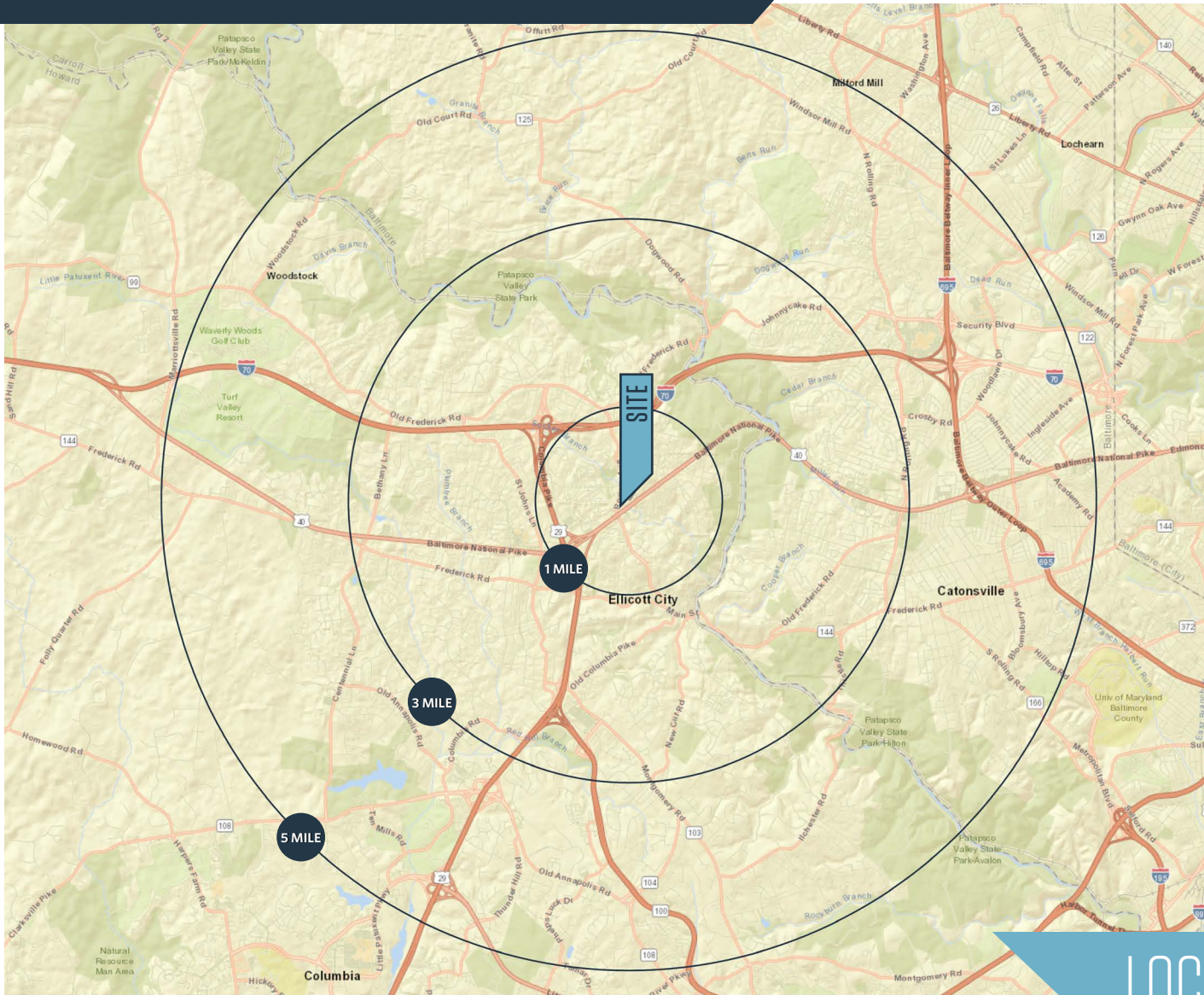
Alan Coppola
acoppola@klnb.com
443-574-1404

100 West Road, Suite 505
Towson, MD 21204
klnb.com

klnb

8528 BALTIMORE NATL PIKE

8528 Baltimore National Pike, Ellicott City, MD 21043
Howard County



AVAILABLE SPACE

1 Acre ± [275 Ft. X 160 Ft.]
Zoned Highway Commercial B-2

DEMOGRAPHICS | 2020:

1-MILE	3-MILE	5-MILE
Population		
15,771	68,471	181,265
Daytime Population		
8,516	23,611	86,251
Households		
6,113	25,179	67,148
Average HH Income		
\$106,712	\$145,947	\$139,923

[CLICK TO DOWNLOAD DEMOGRAPHIC REPORT](#)

TRAFFIC COUNTS | 2019:

Baltimore National Pike [US-40] 48,671 ADT

LOCATION & DEMOGRAPHICS

Patrick Miller
pmiller@klnb.com
443-632-2042

Alan Coppola
acoppola@klnb.com
443-574-1404

100 West Road, Suite 505
Towson, MD 21204
klnb.com



8528 BALTIMORE NATL PIKE

8528 Baltimore National Pike, Ellicott City, MD 21043
Howard County



MARKET AERIAL

Patrick Miller
pmiller@klnb.com
443-632-2042

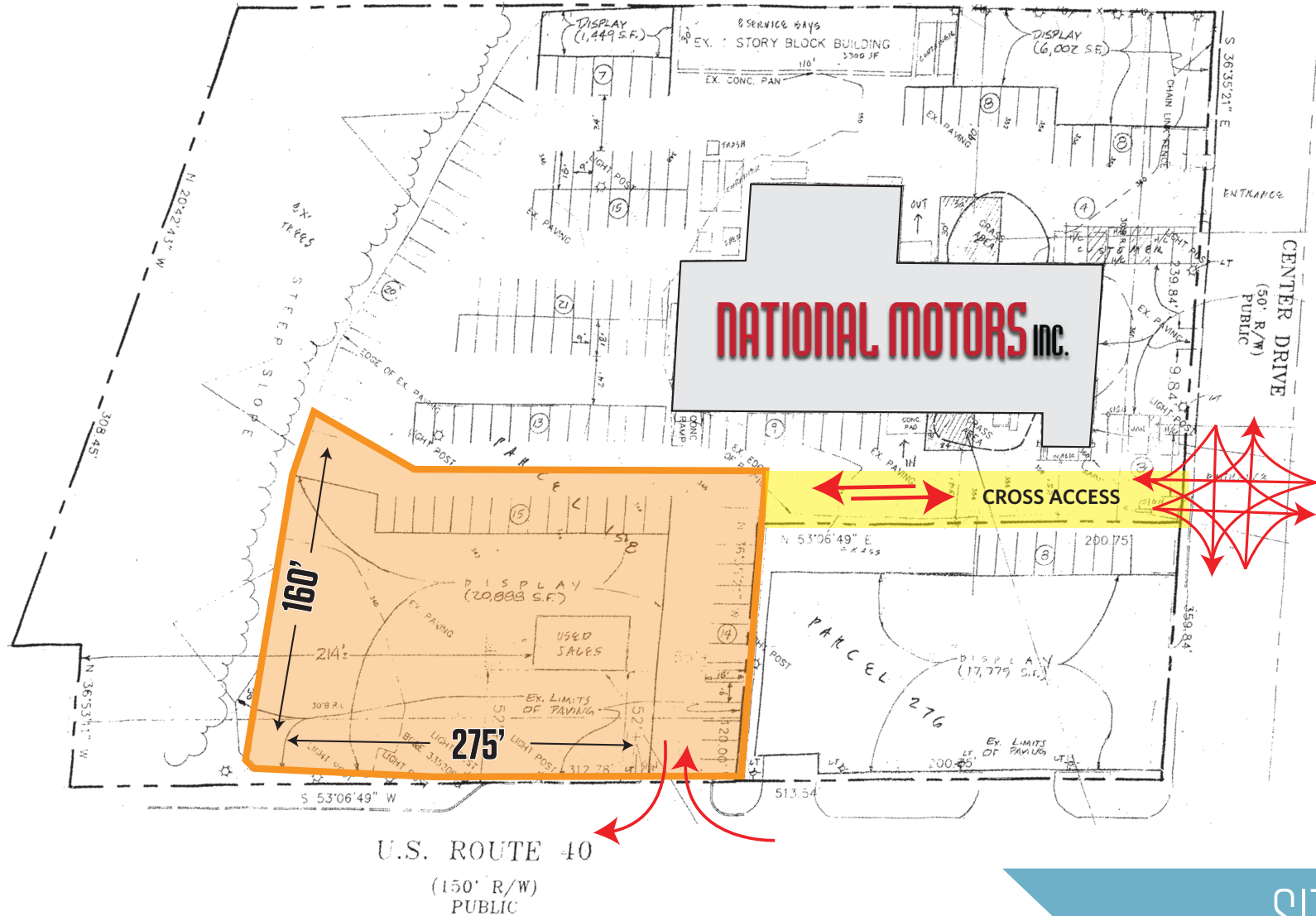
Alan Coppola
acoppola@klnb.com
443-574-1404

100 West Road, Suite 505
Towson, MD 21204
klnb.com



8528 BALTIMORE NATL PIKE

8528 Baltimore National Pike, Ellicott City, MD 21043
Howard County



SITE PLAN

Patrick Miller
pmiller@klnb.com
443-632-2042

Alan Coppola
acoppola@klnb.com
443-574-1404

100 West Road, Suite 505
Towson, MD 21204
klnb.com



8528 BALTIMORE NATL PIKE

8528 Baltimore National Pike, Ellicott City, MD 21043
Howard County

CLICK TO VIEW PROPERTY WEBSITE

For More Information, Please Contact:

Patrick Miller

pmiller@klnb.com

443-632-2042

Alan Coppola

acoppola@klnb.com

443-574-1404

100 West Road, Suite 505
Towson, MD 21204

klnb.com

 facebook.com/KLNB

 [@KLNBLLC](https://twitter.com/KLNBLLC)

 linkedin.com/company/klnb

 instagram.com/klnbllc

While we have no reason to doubt the accuracy of any of the information supplied, we cannot, and do not, guarantee its accuracy. All information should be independently verified prior to a purchase or lease of the property. We are not responsible for errors, omissions, misuse, or misinterpretation of information contained herein and make no warranty of any kind, express or implied, with respect to the property or any other matters.

