

# 8607 CENTRAL AVENUE

8607 Central Avenue, Capitol Heights, MD 20743  
Prince George's County

Potential For An Additional +/- 2.5 Acres



## FOR LEASE

## 46,280 SF STAND-ALONE BUILDING ON 2+ ACRES FOR LEASE

- **Fully air-conditioned with heavy power and 18' clear height**
- 8 dock doors total; 4 interior platform docks, 3 covered dock positions, and 1 oversized door with contiguous fenced storage
- Perfect for climate-controlled manufacturing, food use, or showroom warehouse with retail component
- Prime location and visibility just ½ mile inside the Beltway
- Small office/showroom with large manufacturing warehouse and fenced outside storage
- Highly secure space available
- Potential for an additional 20,000 SF on site

**Spence Daw**  
sdaw@klnb.com  
443-574-1429

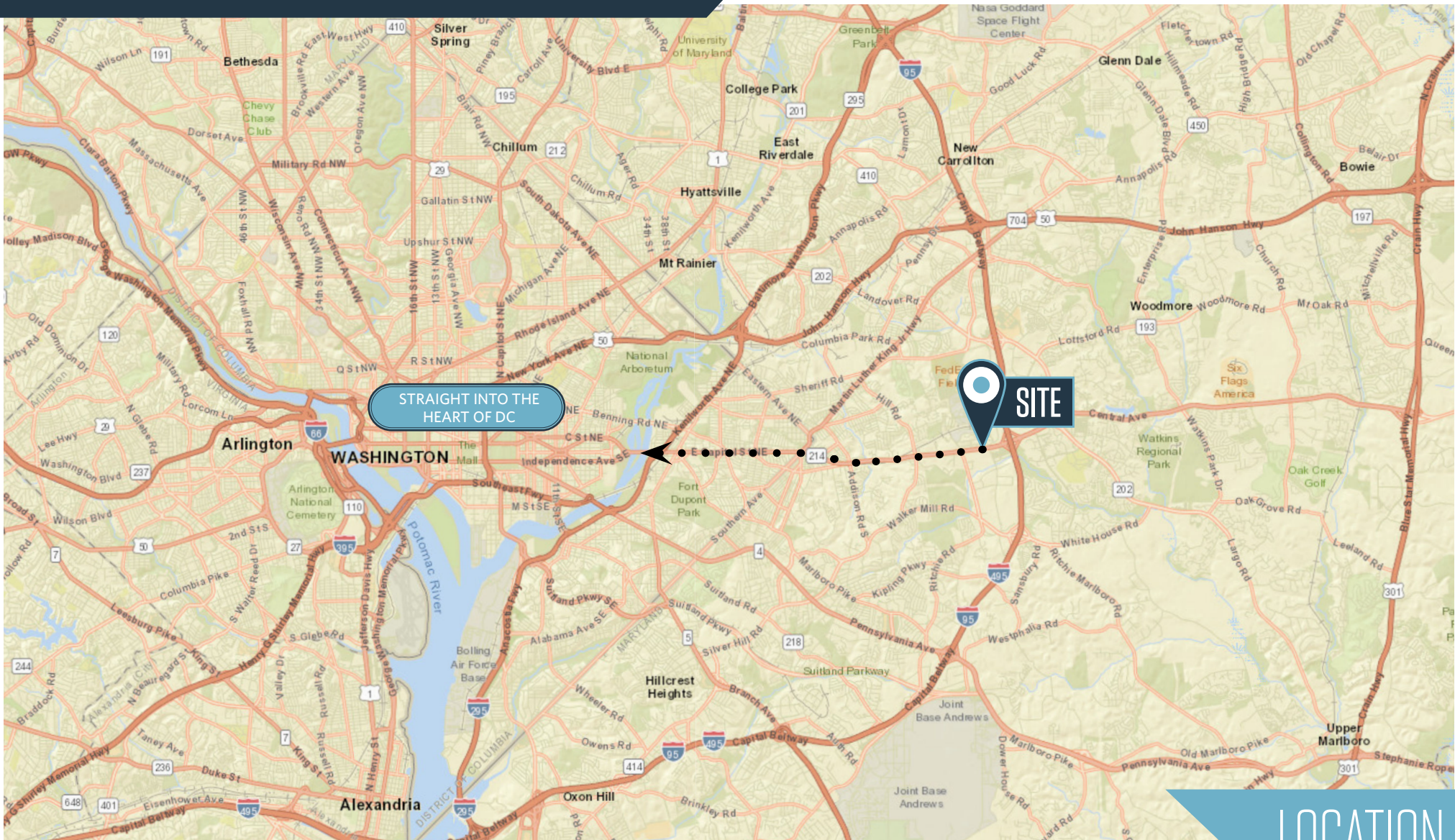
**Zubin David**  
zdavid@klnb.com  
443-574-1446

9881 Broken Land Parkway, Suite 300  
Columbia, MD 21046  
**klnb.com**

**NAI klnb**

# 8607 CENTRAL AVENUE

8607 Central Avenue, Capitol Heights, MD 20743  
Prince George's County



LOCATION

Spence Daw  
sdaw@klnb.com  
443-574-1429

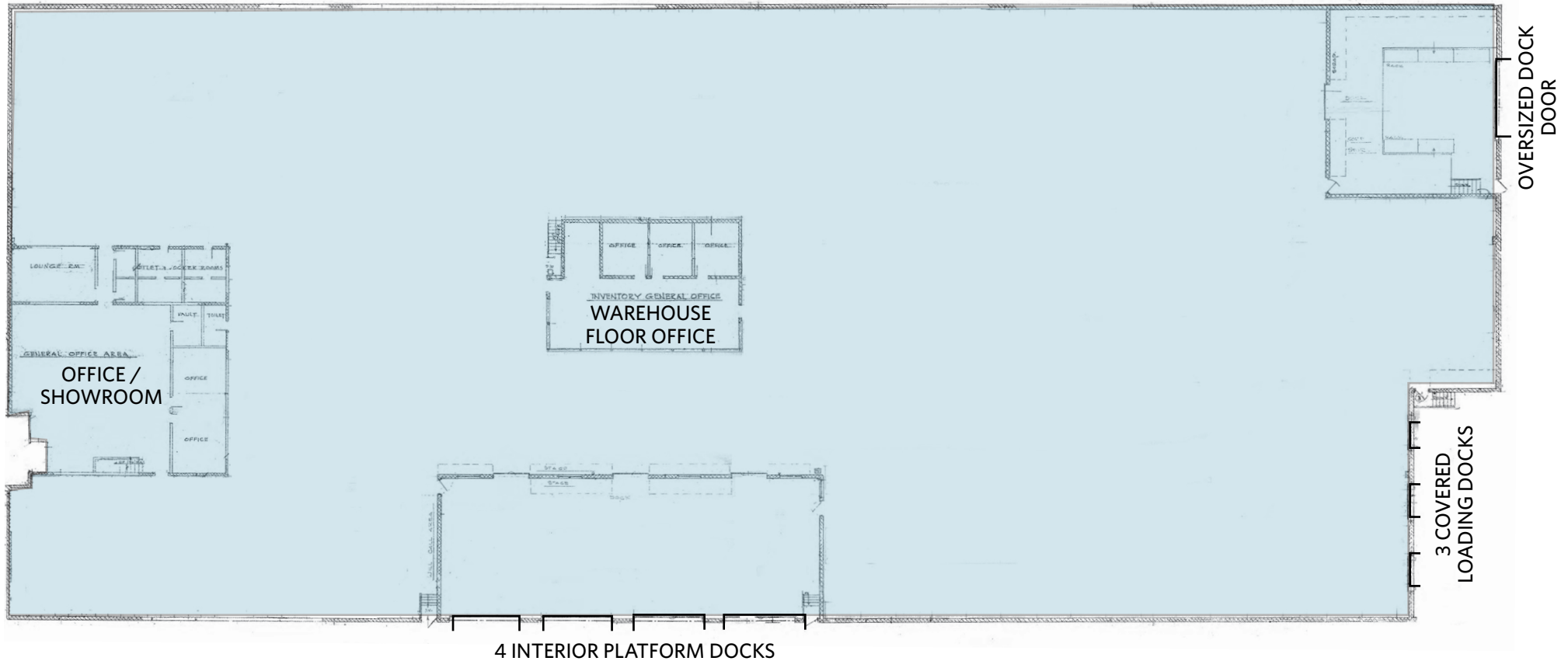
Zubin David  
zdavid@klnb.com  
443-574-1446

9881 Broken Land Parkway, Suite 300  
Columbia, MD 21046  
klnb.com



# 8607 CENTRAL AVENUE

8607 Central Avenue, Capitol Heights, MD 20743  
Prince George's County



## FLOOR PLAN

**Spence Daw**  
sdaw@klnb.com  
443-574-1429

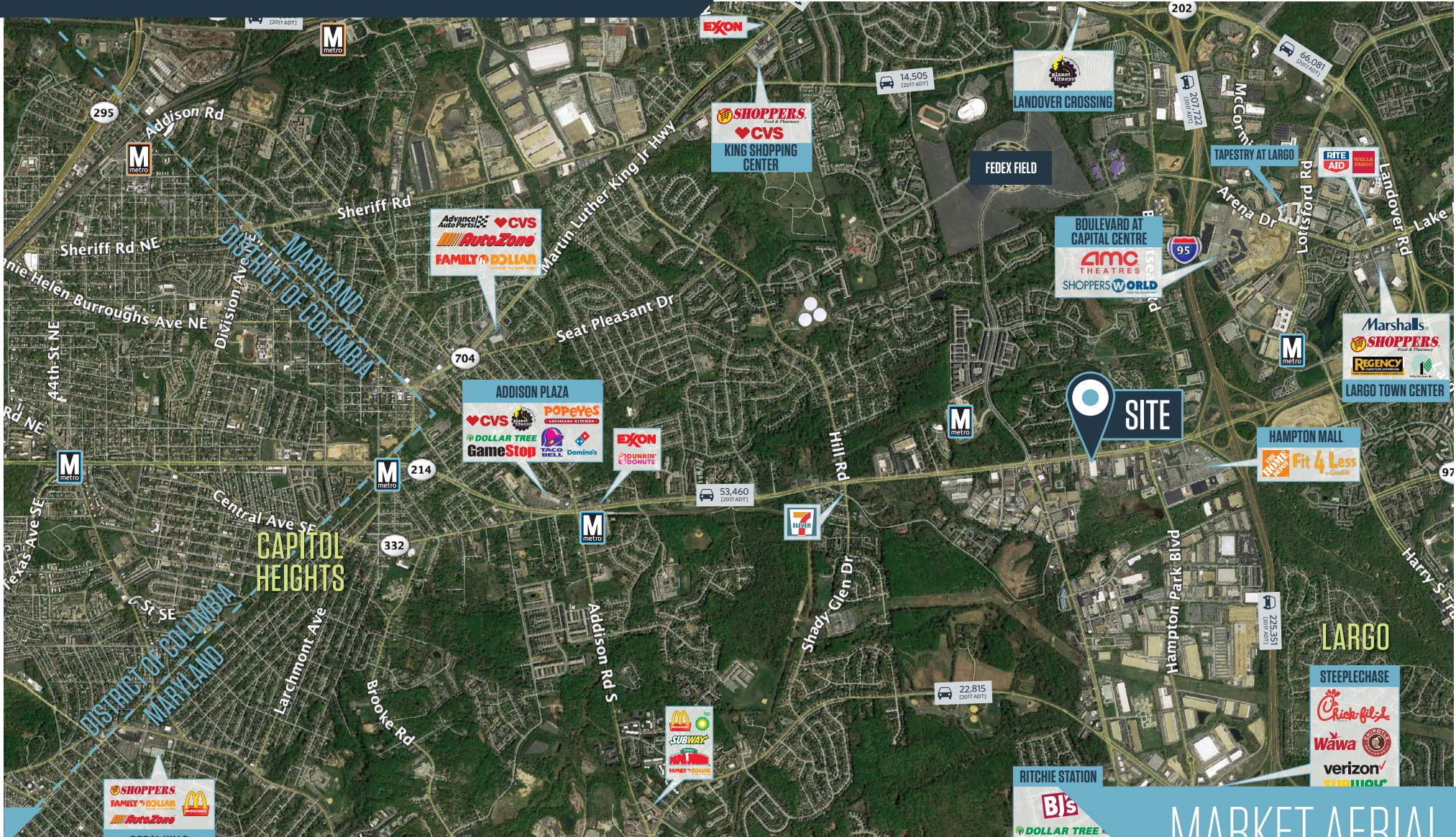
**Zubin David**  
zdavid@klnb.com  
443-574-1446

9881 Broken Land Parkway, Suite 300  
Columbia, MD 21046  
[klnb.com](http://klnb.com)

**NAI** klnb

# 8607 CENTRAL AVENUE

8607 Central Avenue, Capitol Heights, MD 20743  
Prince George's County



Spence Daw  
sdaw@klnb.com  
443-574-1429

Zubin David  
zdavid@klnb.com  
443-574-1446

9881 Broken Land Parkway, Suite 300  
Columbia, MD 21046  
klnb.com



# 8607 CENTRAL AVENUE

8607 Central Avenue, Capitol Heights, MD 20743  
Prince George's County



Interior Platform Docks



Warehouse (Heavy Power & Fully Conditioned)



Dock Positions and Fenced Storage



Ample Parking

PHOTOS

Spence Daw  
sdaw@klnb.com  
443-574-1429

Zubin David  
zdavid@klnb.com  
443-574-1446

9881 Broken Land Parkway, Suite 300  
Columbia, MD 21046  
klnb.com

**NA**klnb

# 8607 CENTRAL AVENUE

8607 Central Avenue, Capitol Heights, MD 20743  
Prince George's County

For More Information, Please Contact:

**Spence Daw**

sdaw@klnb.com

443-574-1429

**Zubin David**

z david@klnb.com

443-574-1446

9881 Broken Land Parkway, Suite 300  
Columbia, MD 21046

[klnb.com](http://klnb.com)

 [facebook.com/KLNB](https://facebook.com/KLNB)

 [@KLNBLLC](https://twitter.com/KLNBLLC)

 [linkedin.com/company/klnb](https://linkedin.com/company/klnb)

 [instagram.com/klnbllc](https://instagram.com/klnbllc)

While we have no reason to doubt the accuracy of any of the information supplied, we cannot, and do not, guarantee its accuracy. All information should be independently verified prior to a purchase or lease of the property. We are not responsible for errors, omissions, misuse, or misinterpretation of information contained herein and make no warranty of any kind, express or implied, with respect to the property or any other matters.

**NAI** klnb