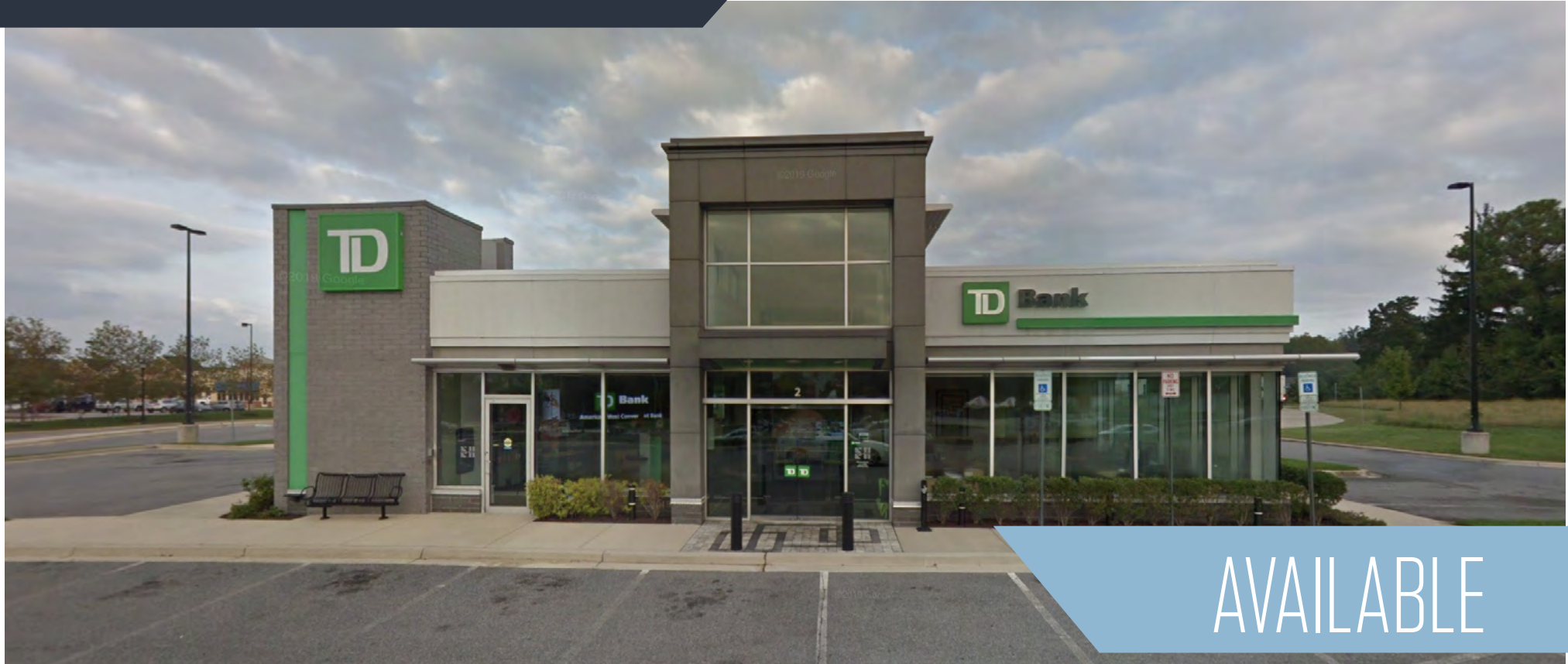


# 2 LEE AIRPARK DRIVE

2 Lee Airpark Dr, Edgewater, MD 21037  
Anne Arundel County



## PROPERTY HIGHLIGHTS:

- Freestanding bank branch building with Drive-Thru
- Approximately 3,000 SF Building
- Fronts Solomon's Island Road (57,370 AADT)
- Excellent access and visibility
- Ample and dedicated parking, full access to signalized intersection

## NEARBY:

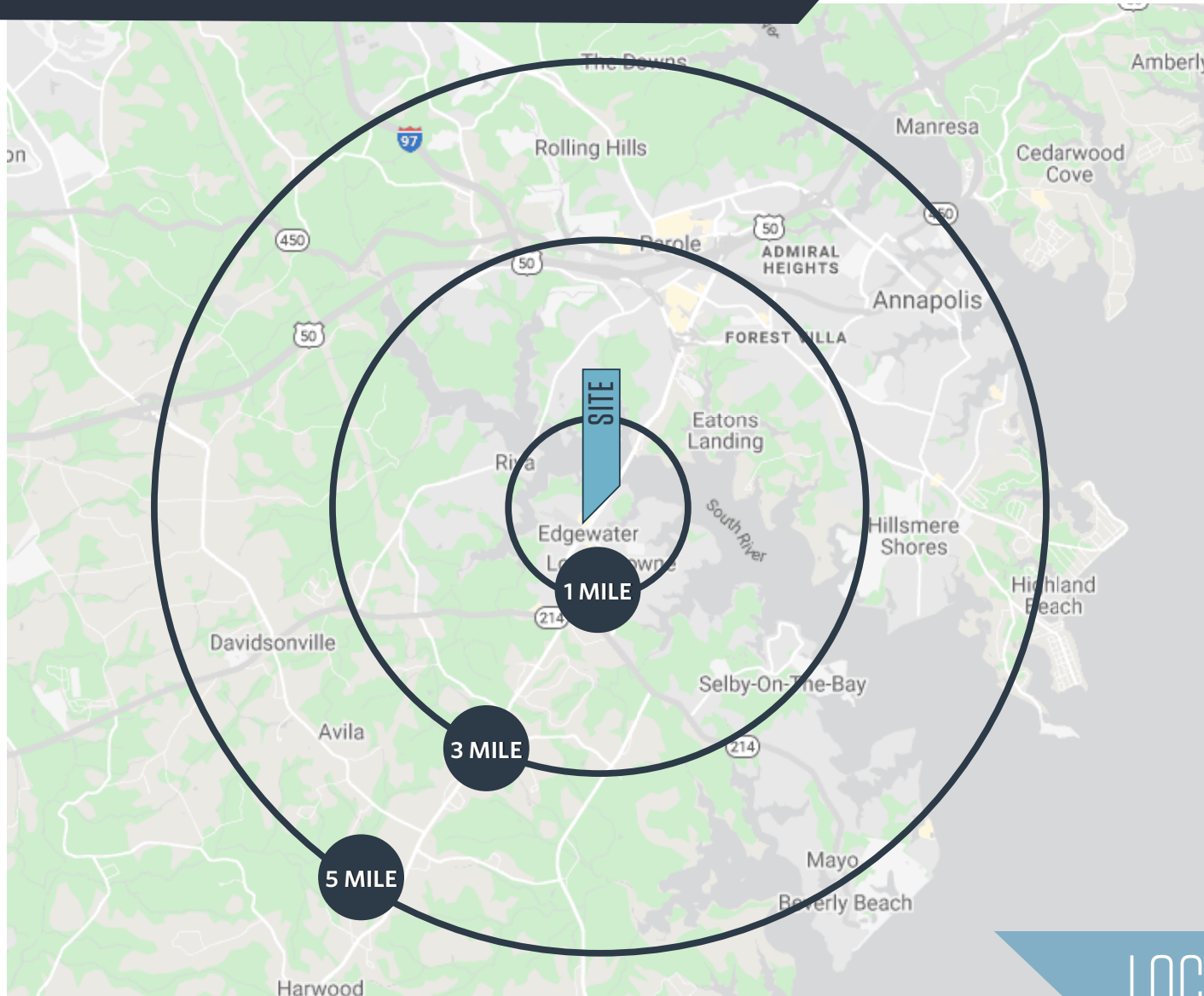


**Bob Browning**  
bbrowning@klnb.com  
703-268-2717

**klnb**

# 2 LEE AIRPARK DRIVE

2 Lee Airpark Dr, Edgewater, MD 21037  
Anne Arundel County



## DEMOGRAPHICS | 2020:

1-MILE	3-MILE	5-MILE
Population		
5,767	37,261	103,226
Daytime Population		
3,875	34,593	85,662
Households		
2,273	14,817	40,315
Average HH Income		
\$134,990	\$141,461	\$144,719
Median HH Income		
\$101,438	\$104,071	\$102,898

[CLICK TO DOWNLOAD DEMOGRAPHIC REPORT](#)

## TRAFFIC COUNTS | 2019:

Solomons Island Rd 4,200 ADT

## LOCATION & DEMOGRAPHICS

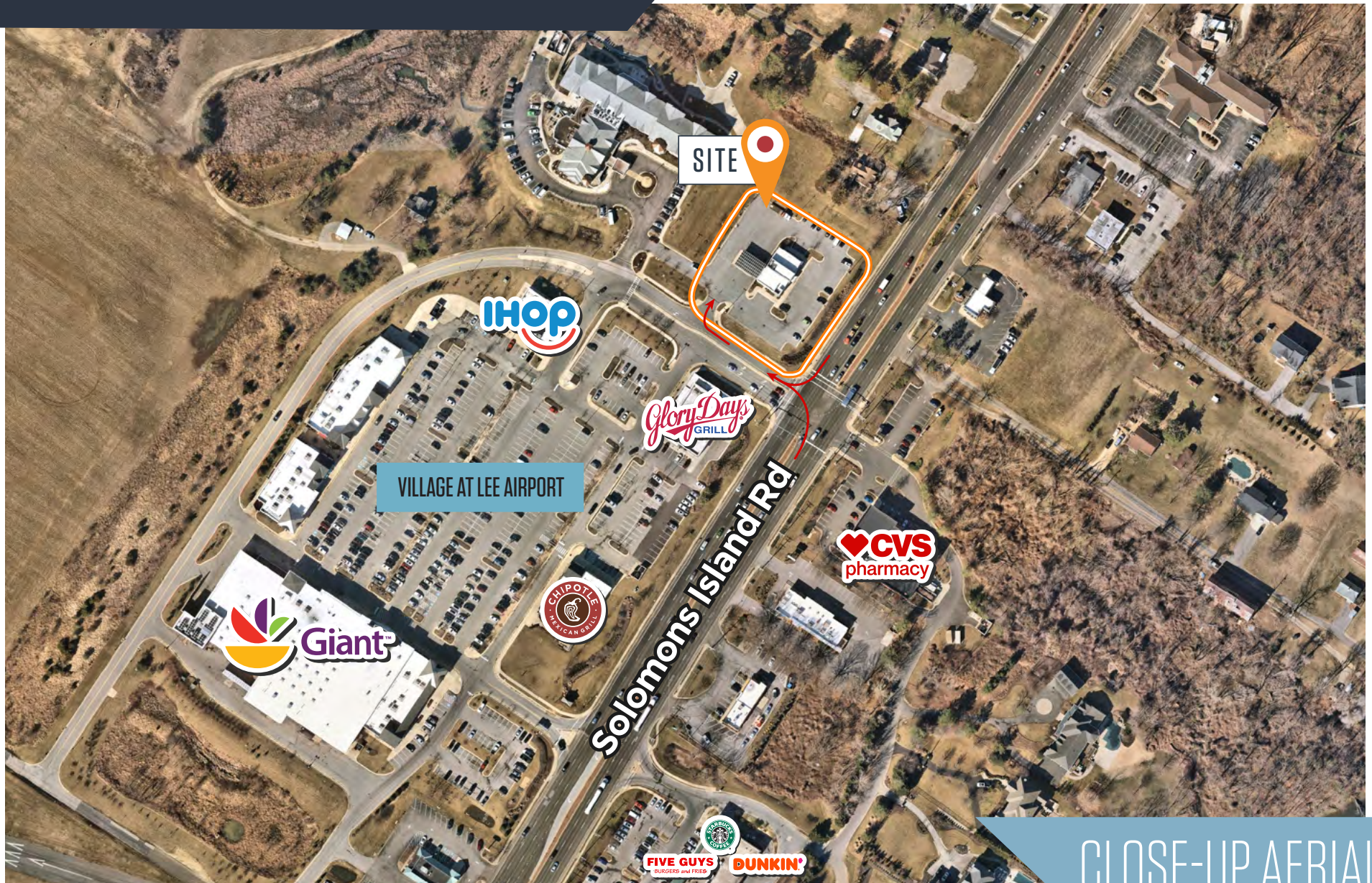
# 2 LEE AIRPARK DRIVE

2 Lee Airpark Dr, Edgewater, MD 21037  
Anne Arundel County



# 2 LEE AIRPARK DRIVE

2 Lee Airpark Dr, Edgewater, MD 21037  
Anne Arundel County



# 2 LEE AIRPARK DRIVE

2 Lee Airpark Dr, Edgewater, MD 21037  
Anne Arundel County

CLICK TO VIEW PROPERTY WEBSITE

For More Information, Please Contact:

**Bob Browning**

bbrowning@klnb.com

703-268-2717


8065 Leesburg Pike, Suite 700  
Tysons, VA 22182

[klnb.com](http://klnb.com)

 [facebook.com/KLNB](https://facebook.com/KLNB)

 [@KLNBLLC](https://twitter.com/KLNBLLC)

 [linkedin.com/company/klnb](https://linkedin.com/company/klnb)

 [instagram.com/klnbllc](https://instagram.com/klnbllc)

While we have no reason to doubt the accuracy of any of the information supplied, we cannot, and do not, guarantee its accuracy. All information should be independently verified prior to a purchase or lease of the property. We are not responsible for errors, omissions, misuse, or misinterpretation of information contained herein and make no warranty of any kind, express or implied, with respect to the property or any other matters.

