



## NEARBY RETAILERS



## PAD SITES AVAILABLE

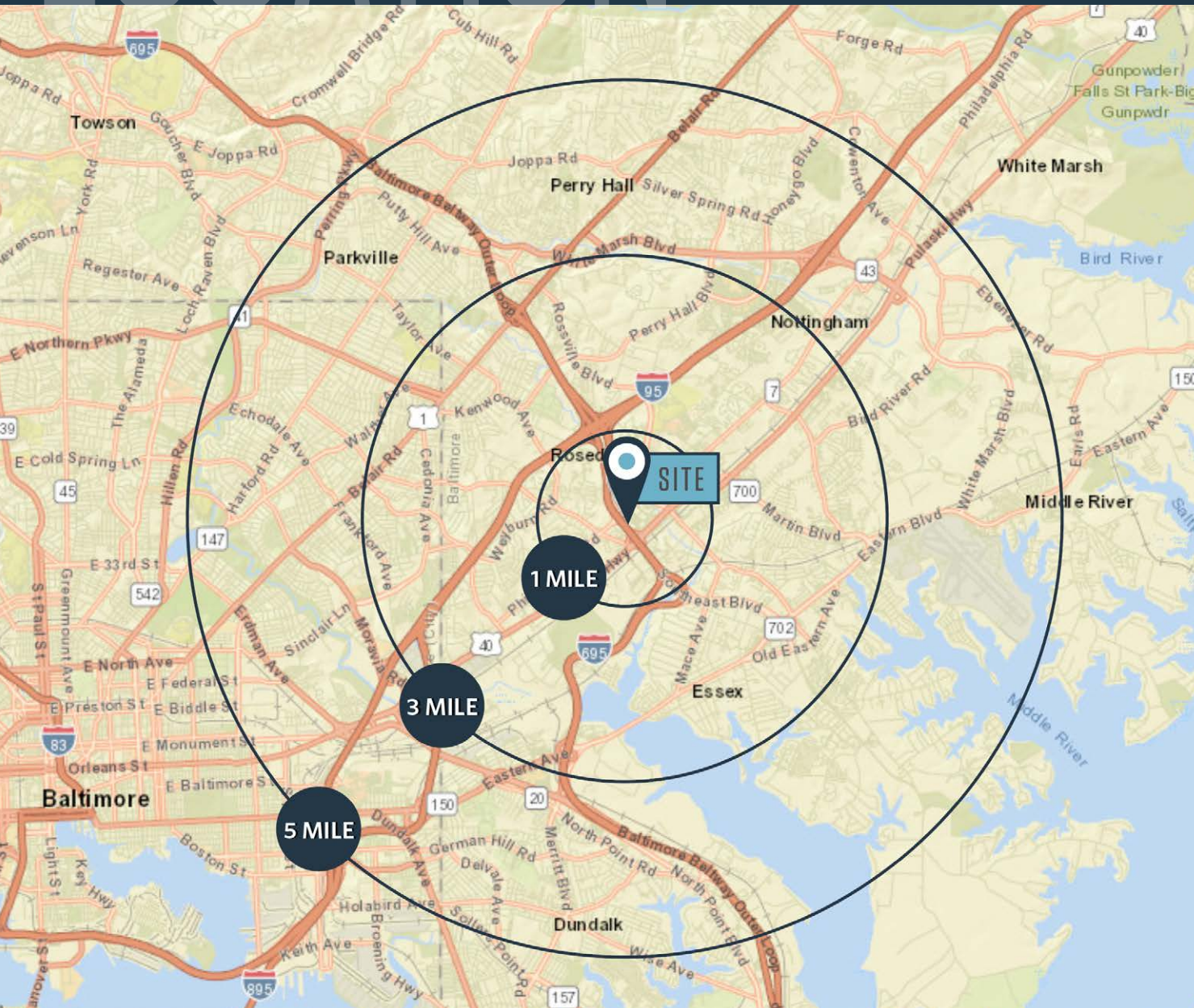
- Former free standing bank building available
- 3,456 SF with 3 drive thru lanes on 0.592 acres
- Located in the dominant retail power center in the trade area and just off the Baltimore Beltway
- Available April 1, 2022



# LOCATION

# 6417 PETRIE WAY ROAD

BALTIMORE, MD 21237



## AVAILABLE SPACE:

3,456 SF with 3 drive thru lanes  
on 0.592 acres

## DEMOGRAPHICS | 2021:

1-MILE	3-MILE	5-MILE
Population		
9,824	105,457	318,021
Daytime Population		
7,737	47,873	112,745
Households		
3,623	40,506	125,005
Average HH Income		
\$75,920	\$78,959	\$78,958

[CLICK TO DOWNLOAD DEMOGRAPHIC REPORT](#)

## TRAFFIC COUNTS | 2019:

Philadelphia Rd [MD-7]	42,025 ADT
Balto Beltway [MD-695]	105,370 ADT
Pulaski Hwy [US-40]	62,501 ADT

**DIMITRI GEORGELAKOS**

dimitri@klnb.com | 703-268-2710

**ALEX SHEARER**

ashearer@klnb.com | 443-632-2081





# MARKET

# 6417 PETRIE WAY ROAD

BALTIMORE, MD 21237



**DIMITRI GEORGELAKOS**  
dimitri@klnb.com | 703-268-2710

**ALEX SHEARER**  
ashearer@klnb.com | 443-632-2081





# MID-VIEW

# 6417 PETRIE WAY ROAD

BALTIMORE, MD 21237



**DIMITRI GEORGELAKOS**  
dimitri@klnb.com | 703-268-2710

**ALEX SHEARER**  
ashearer@klnb.com | 443-632-2081

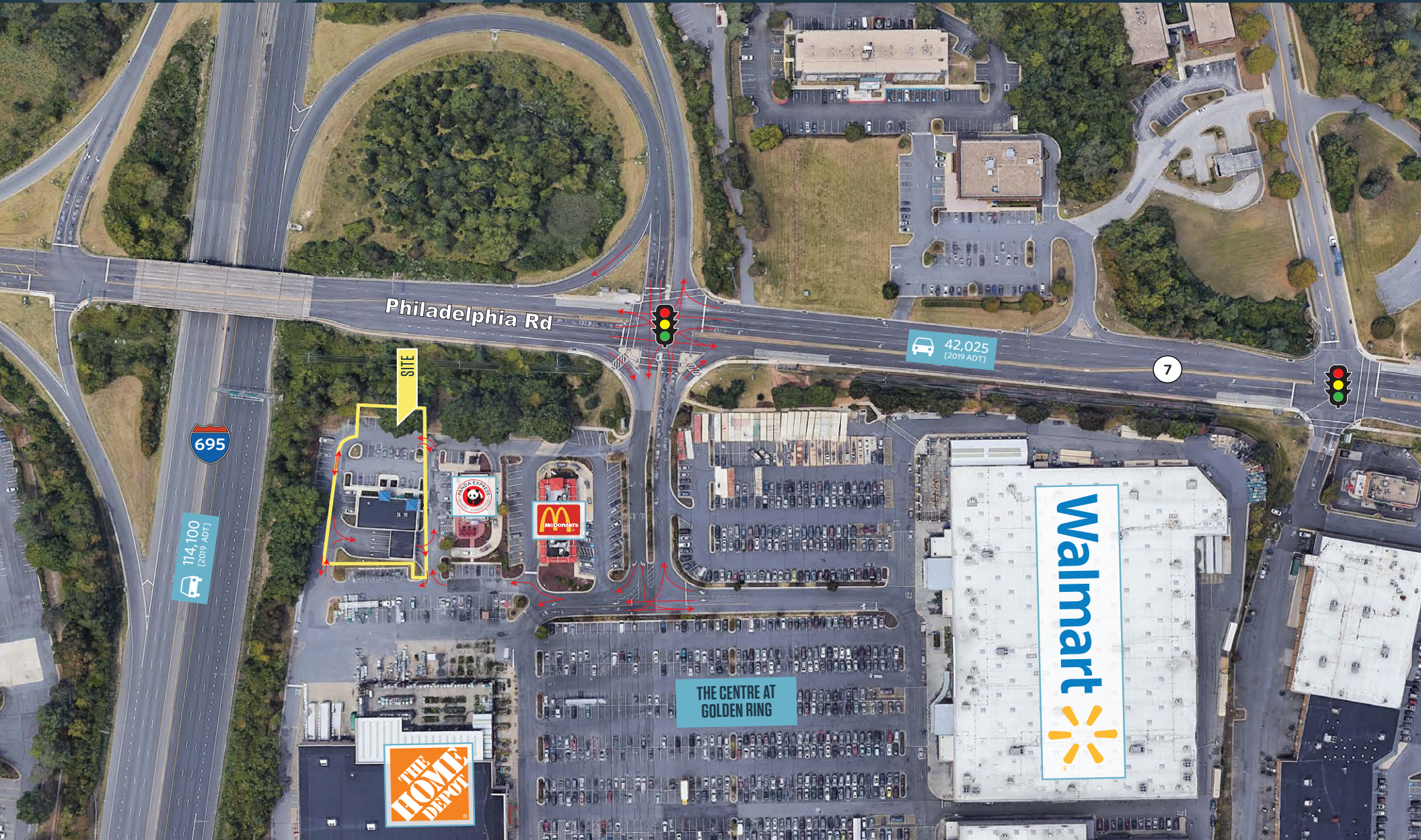




# CLOSE-UP

# 6417 PETRIE WAY ROAD

BALTIMORE, MD 21237



**DIMITRI GEORGELAKOS**  
dimitri@klnb.com | 703-268-2710

**ALEX SHEARER**  
ashearer@klnb.com | 443-632-2081



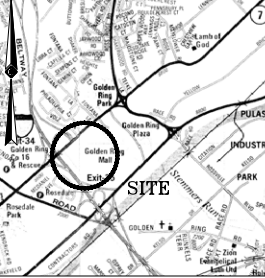
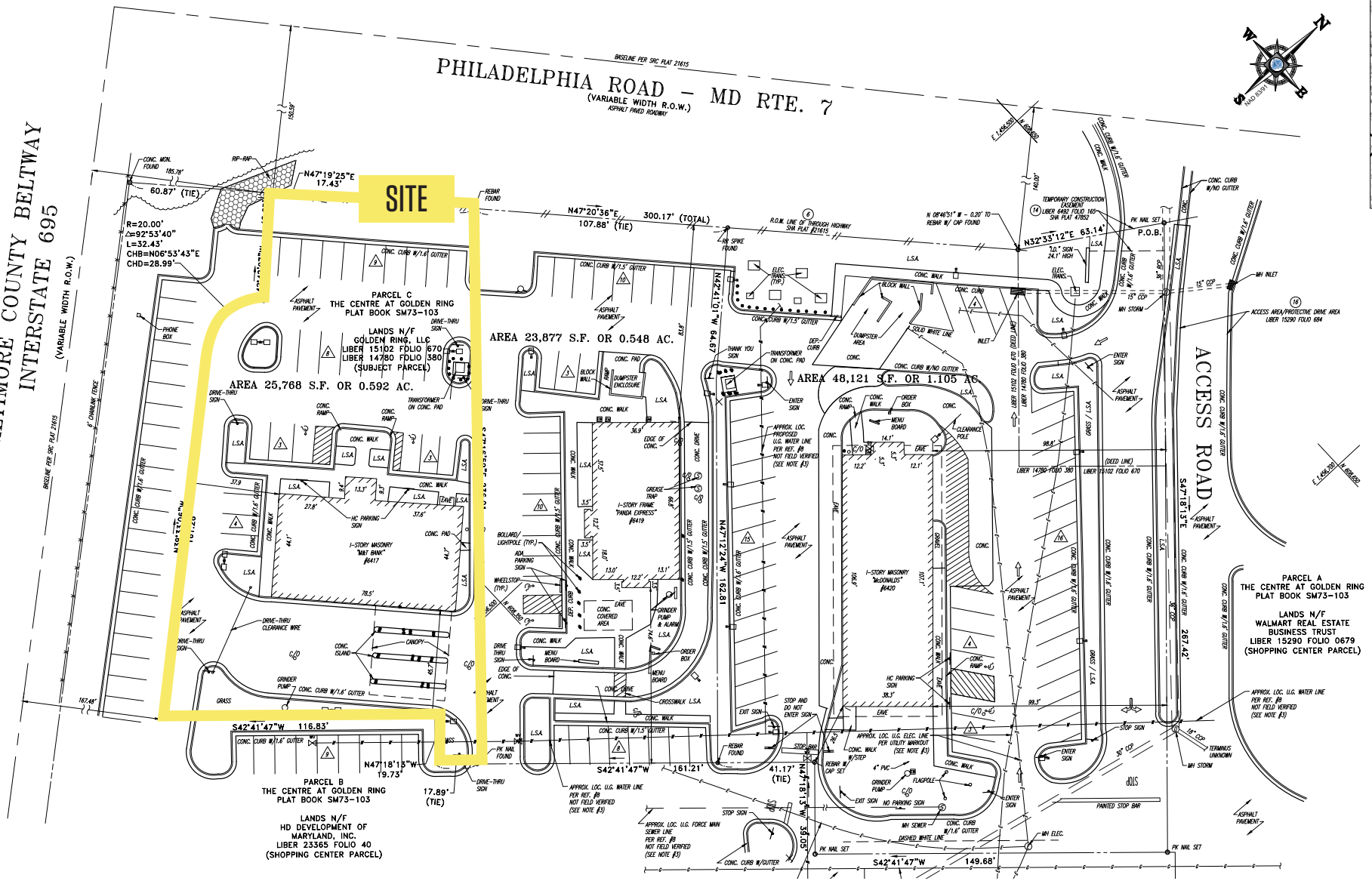


# SURVEY

# 6417 PETRIE WAY ROAD

BALTIMORE, MD 21237

BALTIMORE COUNTY BELTWAY  
INTERSTATE 695  
(VARIABLE WIDTH R.O.W.)



**DIMITRI GEORGELAKOS**  
dimitri@klnb.com | 703-268-2710

**ALEX SHEARER**  
ashearer@klnb.com | 443-632-2081





# 6417 PETRIE WAY ROAD

BALTIMORE, MD 21237

## FOR MORE INFORMATION, PLEASE CONTACT:

**DIMITRI GEORGELAKOS**

dimitri@klnb.com

703-268-2710

**ALEX SHEARER**

ashearer@klnb.com

443-632-2081

8065 Leesburg Pike, Suite 700, Tysons, VA 22182

.....  
**klnb.com**

 [facebook.com/KLNB](https://facebook.com/KLNB)

 [@KLNBLLC](https://twitter.com/KLNBLLC)

 [linkedin.com/company/klnb](https://linkedin.com/company/klnb)

 [instagram.com/klnbllc](https://instagram.com/klnbllc)

**CLICK TO VIEW PROPERTY WEBSITE**

While we have no reason to doubt the accuracy of any of the information supplied, we cannot, and do not, guarantee its accuracy. All information should be independently verified prior to a purchase or lease of the property. We are not responsible for errors, omissions, misuse, or misinterpretation of information contained herein and make no warranty of any kind, express or implied, with respect to the property or any other matters.