

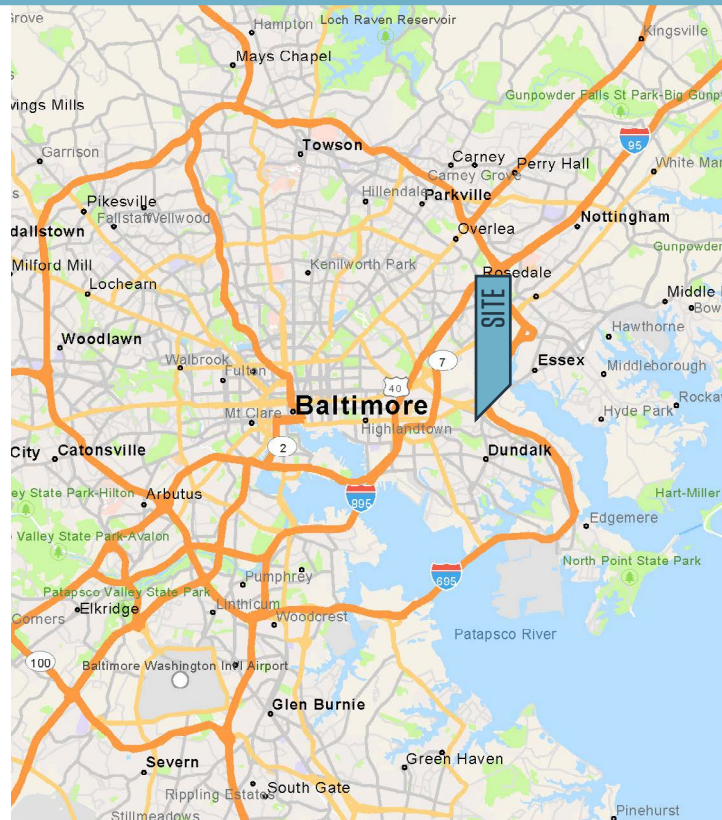


## FOR LEASE

### PROPERTY HIGHLIGHTS

- **Available Space:** Suite 206; 1,127 square feet
- **Building Size:** 12,000 square feet
- **Stories:** Two (2)
- **Floor Size:** 6,000 square feet
- **Year Built:** 1985
- **Renovated:** 2020
- **Zoning:** BL
- **Land Area:** 0.72 acres
- **Construction:** Masonry
- **Parking:** 4:1,000 square feet

### NEARBY AMENITIES



**Abby Glassberg**  
aglassberg@klnb.com  
443-574-1433

**Aaron Carroll**  
acarroll@klnb.com  
443-574-1430

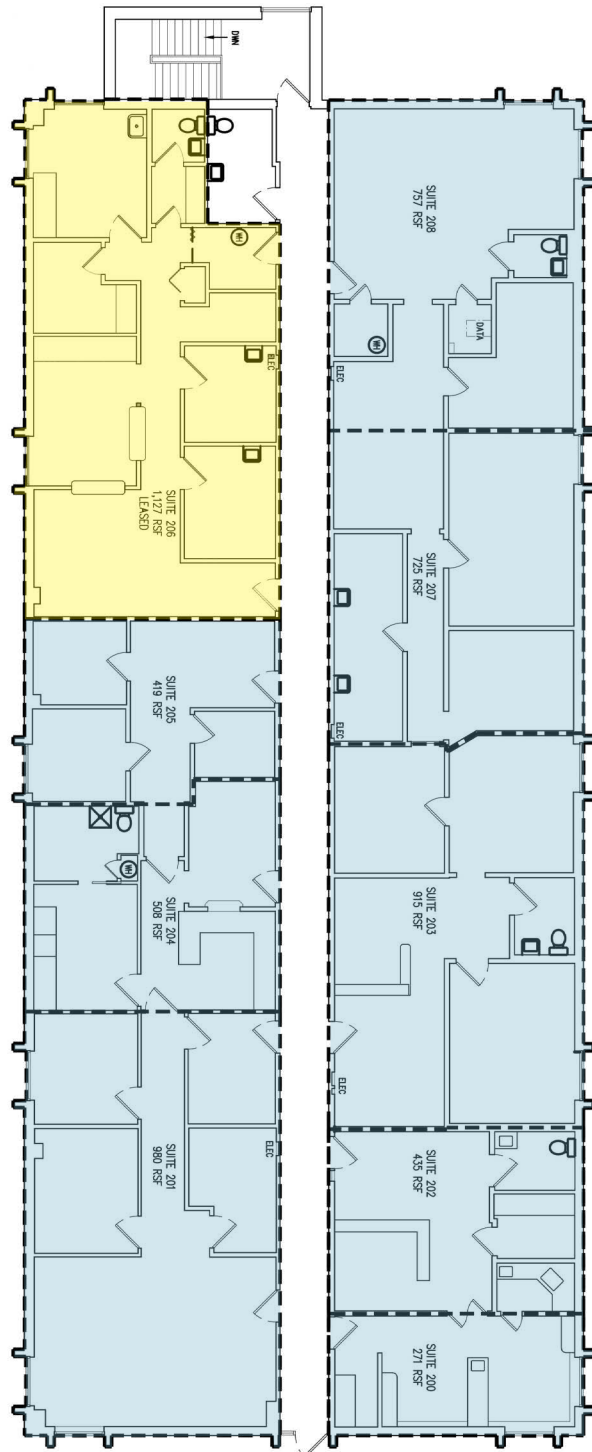
9881 Broken Land Pkwy, Suite 300  
Columbia, MD 21046  
**klnb.com**

# 1050 OLD NORTH POINT ROAD

Baltimore, MD 21224 | Baltimore City

## FLOOR PLAN

**Suite 206**  
1,127 RSF



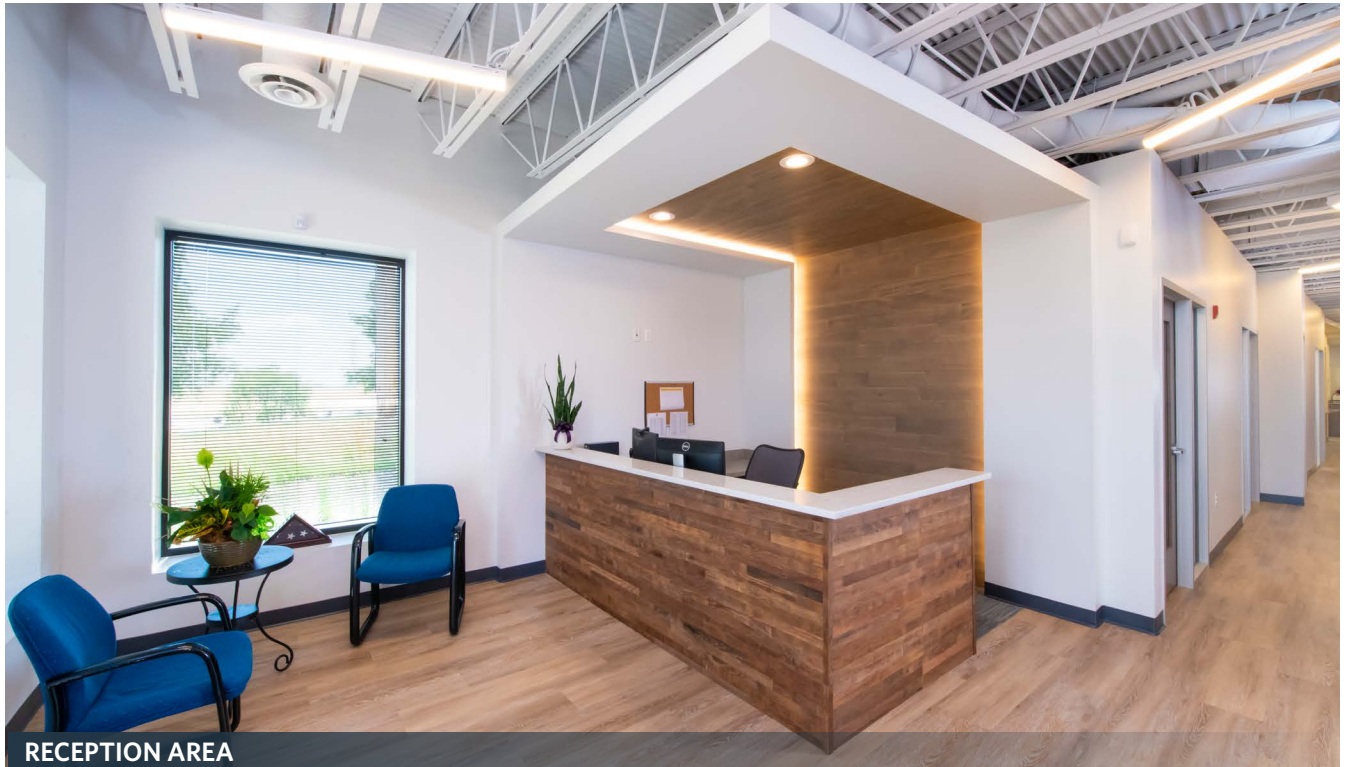
|   |           |
|---|-----------|
|  | AVAILABLE |
|  | LEASED    |

**Abby Glassberg**  
aglassberg@klnb.com  
443-574-1433

**Aaron Carroll**  
acarroll@klnb.com  
443-574-1430



## PHOTOS



RECEPTION AREA



HALLWAY



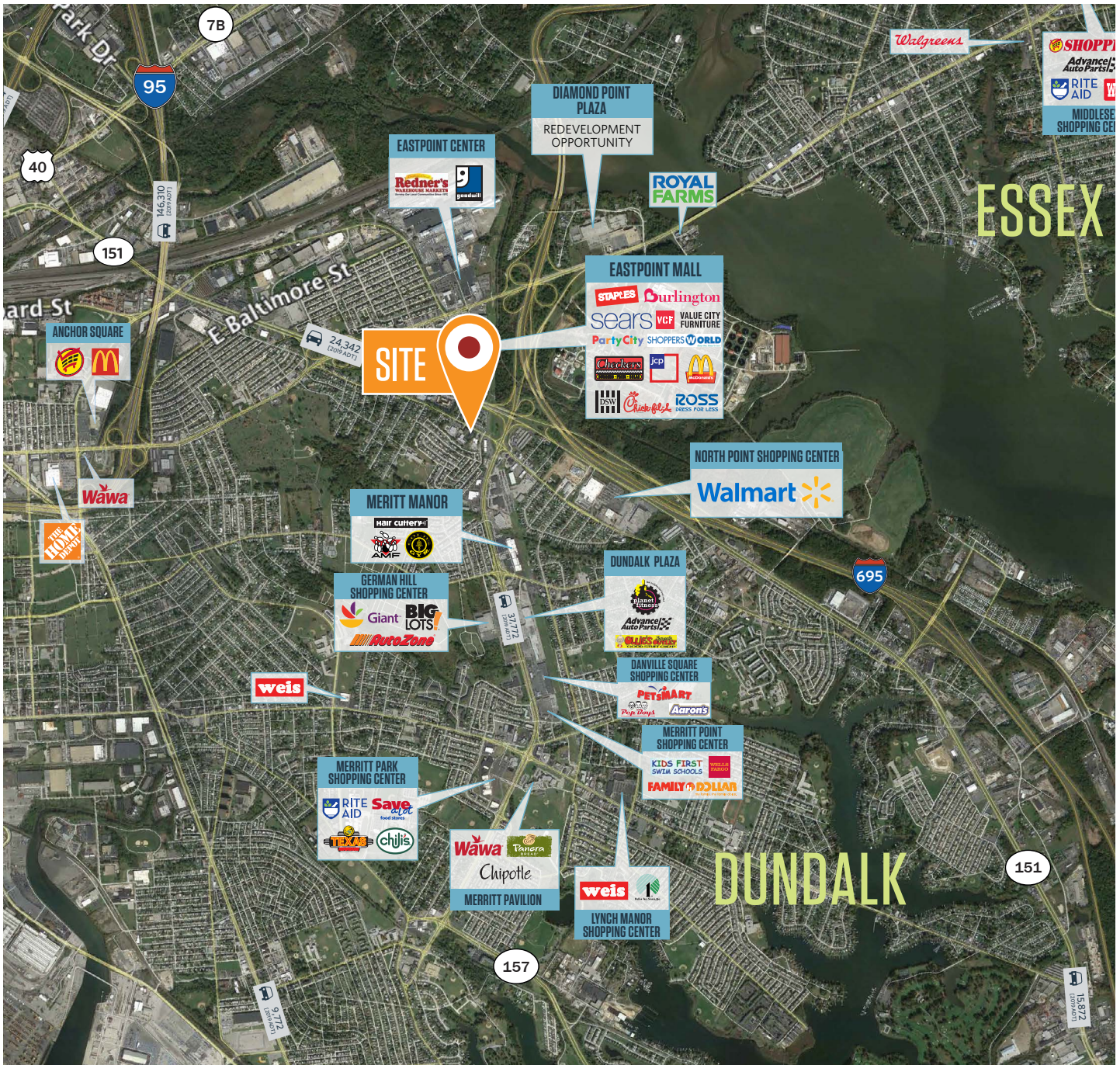
CUBICLES



1050 OLD NORTH POINT ROAD  
 Baltimore, MD 21224 | Baltimore City



MARKET AERIAL



While we have no reason to doubt the accuracy of any of the information supplied, we cannot, and do not, guarantee its accuracy. All information should be independently verified prior to a purchase or lease of the property. We are not responsible for errors, omissions, misuse, or misinterpretation of information contained herein and make no warranty of any kind, express or implied, with respect to the property or any other matters.

**Abby Glassberg**  
 aglassberg@klnb.com  
 443-574-1433

**Aaron Carroll**  
 acarroll@klnb.com  
 443-574-1430

9881 Broken Land Pkwy, Suite 300  
 Columbia, MD 21046  
**klnb.com**