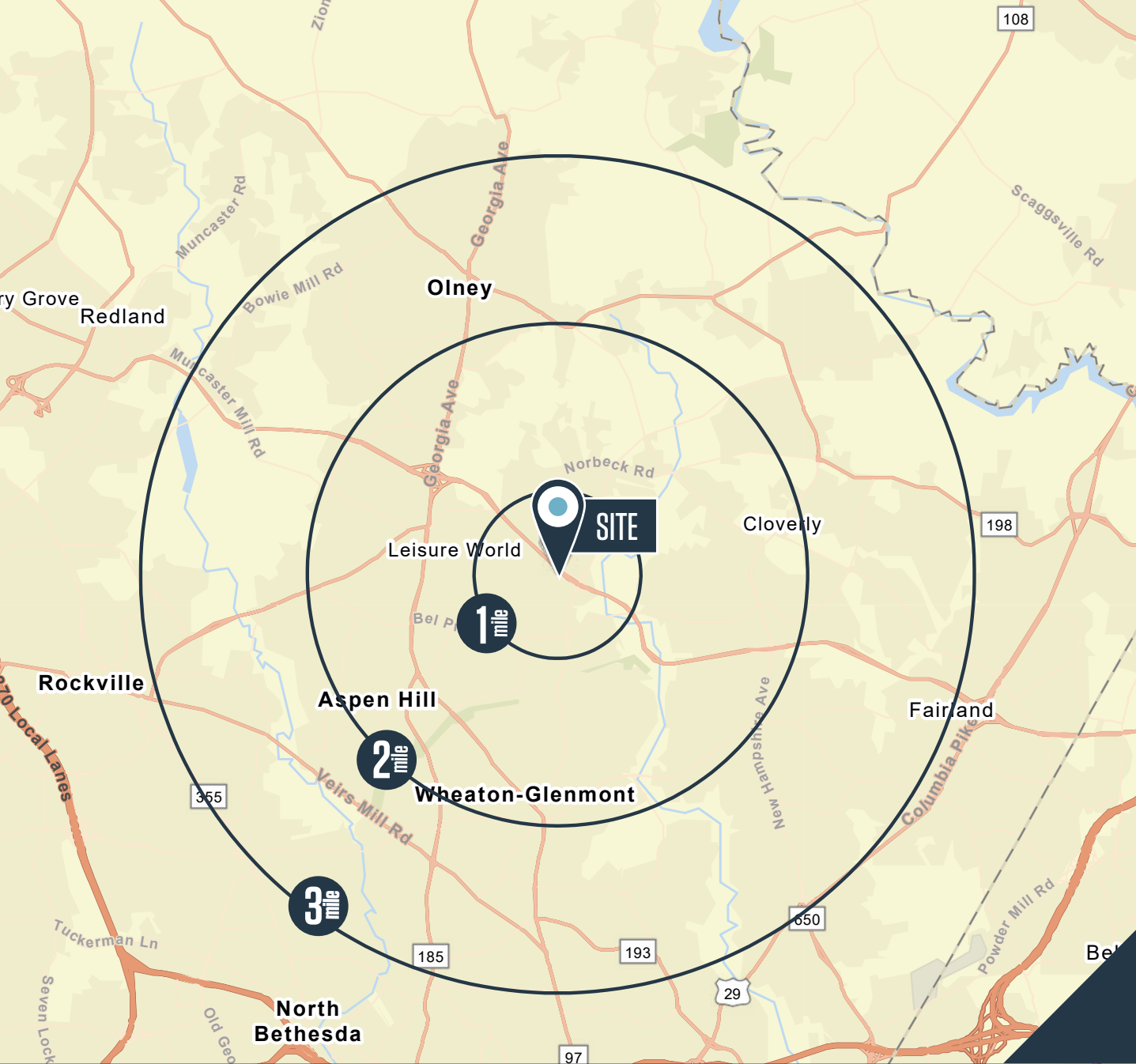


PROPERTY HIGHLIGHTS

- **Lot Size:** 3.8 acres
- **Density:** Up to 33 residential units
- **Zoning:** R-200
- Concept plans completed
- Utilities and storm water at site

LAND FOR SALE



AVAILABLE LOT SIZE

3.8 ACRES

DEMOGRAPHICS | 2020:

	1-MILE	3-MILE	5-MILE
Population	11,962	90,638	254,348
Households	4,615	32,781	87,457
Average HH Income	\$112,629	\$131,795	\$134,403

TRAFFIC COUNTS | 2020:

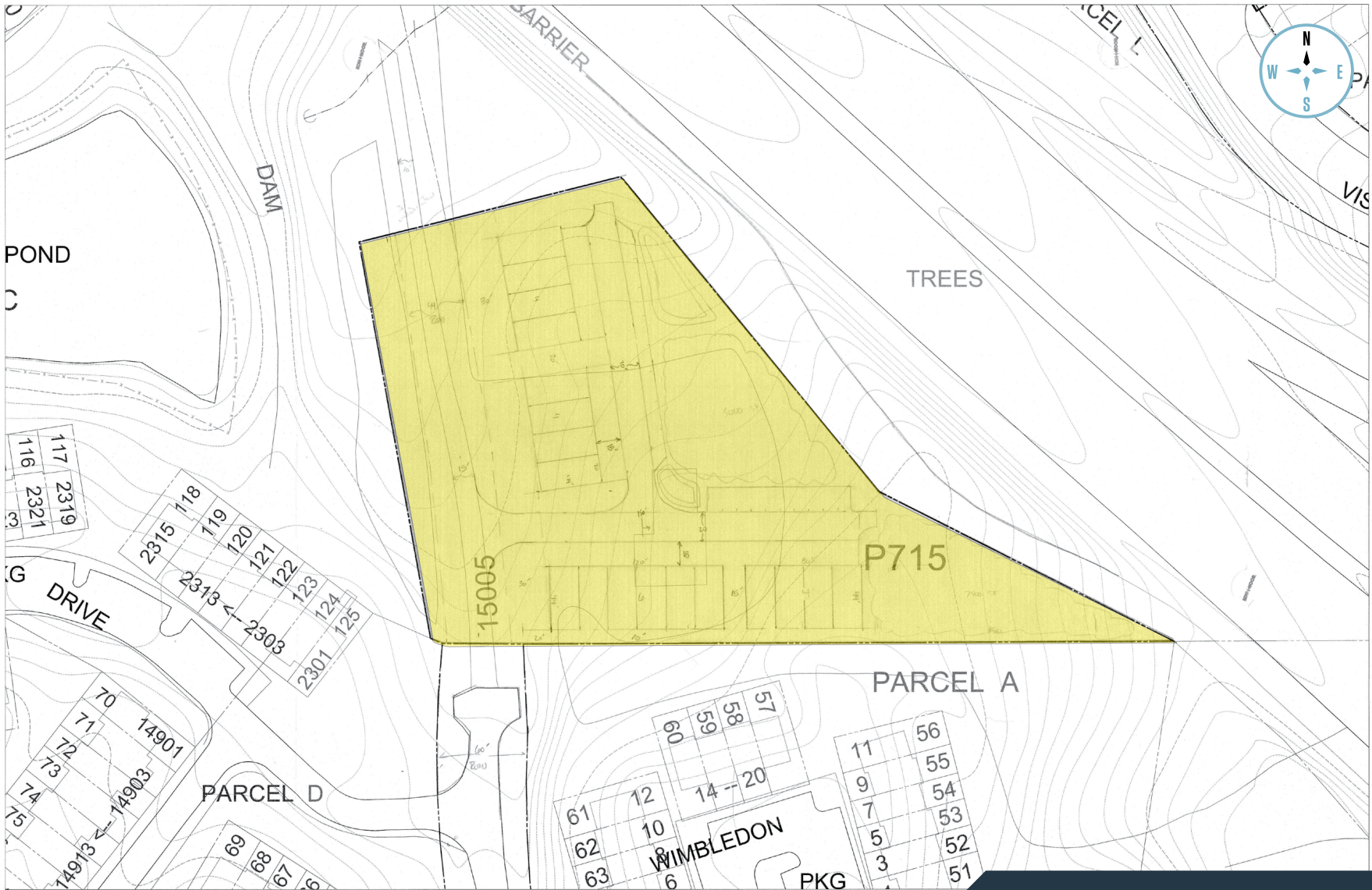
ICC MD State Route 200	12,870ADT
Layhill Road	2,960 ADT

LOCATION & DEMOS

15005 WIMBLEDON DRIVE

ZUBIN DAVID
 zdavid@klnb.com
 301-821-5588





LOCATION SURVEY

15005 WIMBLEDON DRIVE

ZUBIN DAVID
 zdavid@klnb.com
 301-821-5588



Montgomery County

District: **13** Account Number: **00978873**



TAX MAP

15005 WIMBLEDON DRIVE

ZUBIN DAVID
zdavid@klnb.com
301-821-5588





Example of 3 story town home with detached garage at rear.

Rear loaded town homes with detached garage fronting the central open space

All town homes facing a central open space with leadwalks and sidewalks connecting them to the main road.

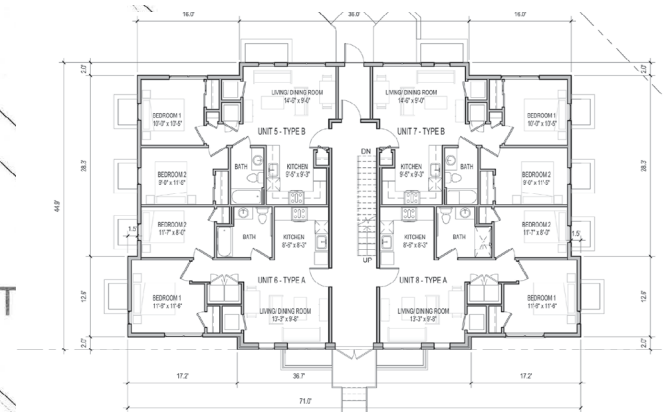
+/- 24 DU (Town home 20' x 80')

CONCEPT PLAN | OPTION A

15005 WIMBLEDON DRIVE

ZUBIN DAVID
 zdavid@klnb.com
 301-821-5588





Ground floor plan of 12 unit apartment in 3 levels.

- Rear loaded town homes
- 12 Units apartment at 3 levels with surface parking at the back.
- One-way loop road around central open space to provide access to the units.

12 units APT (44' x 71' @ 3 levels)
 11 units Town homes (20' x 44')
TOTAL: 23 DU

OR

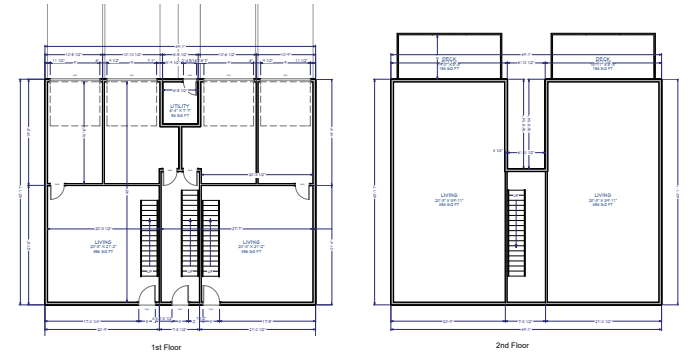
12 units APT (44' x 71' @ 3 levels)
 22 units 2 over 2's (20' x 50')
TOTAL: 34 DU

CONCEPT PLAN | OPTION B

15005 WIMBLEDON DRIVE

ZUBIN DAVID
 zdavid@klnb.com
 301-821-5588





Example of 4plex building in 4 levels.

- Rear loaded 4plex buildings
- 12 Units apartment at 3 levels with surface parking at the back.
- One-way loop road around central open space to provide access to the units.

12 units APT (44'x 71' @ 3 levels)
 20 units 4plexs (40' x 50'@ 4 levels)
TOTAL: 32 DU

CONCEPT PLAN | OPTION C

15005 WIMBLEDON DRIVE

ZUBIN DAVID
 zdavid@klnb.com
 301-821-5588





15005 WIMBLEDON DRIVE
Silver Spring, MD 20906 | Montgomery County

CONTACT

ZUBIN DAVID
zdavid@klnb.com
301-821-5588

9881 Broken Land Pkwy, Suite 300
Columbia, MD 21046

klnb.com

VISIT PROPERTY WEBSITE



While we have no reason to doubt the accuracy of any of the information supplied, we cannot, and do not, guarantee its accuracy. All information should be independently verified prior to a purchase or lease of the property. We are not responsible for errors, omissions, misuse, or misinterpretation of information contained herein and make no warranty of any kind, express or implied, with respect to the property or any other matters.