

CLASS A OFFICE

Maple Lawn | Howard County

8115 Maple Lawn Boulevard, Fulton, MD 20759



FOR SUBLEASE

NEARBY AMENITIES:



- Four-Story Class A Office
- **Available:** 2,849 SF total
- **Parking:** 4 spaces per 1,000 SF
- **Elevator:** Yes
- **Expiration Date:** April 30, 2023
- Upgraded Finishes
- In the center of Maple Lawn's New Office/Retail/Residential Community, located in Balto./Wash. Corridor

Abby Glassberg
aglassberg@klnb.com
443-574-1433

Chuck Breitenother
cbreitenother@klnb.com
443-574-1422

9881 Broken Land Pkwy, #300
Columbia, MD 21046
klnb.com

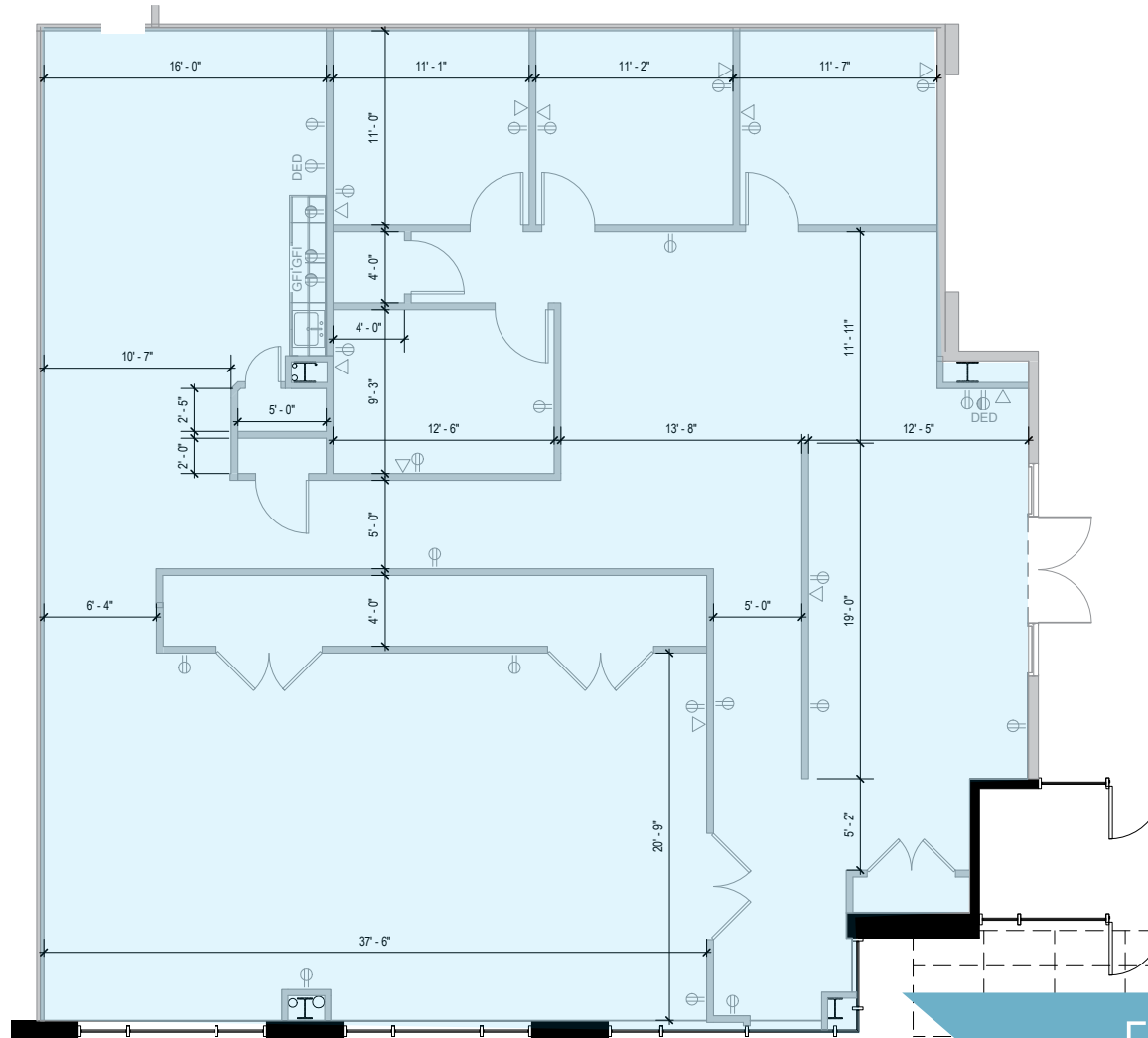
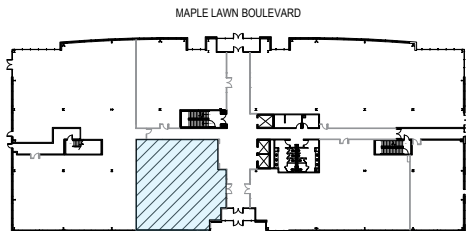


CLASS A OFFICE

Maple Lawn | Howard County

8115 Maple Lawn Boulevard, Fulton, MD 20759

FIRST FLOOR
2,849 SF



FLOOR PLAN

Abby Glassberg
aglassberg@klnb.com
443-574-1433

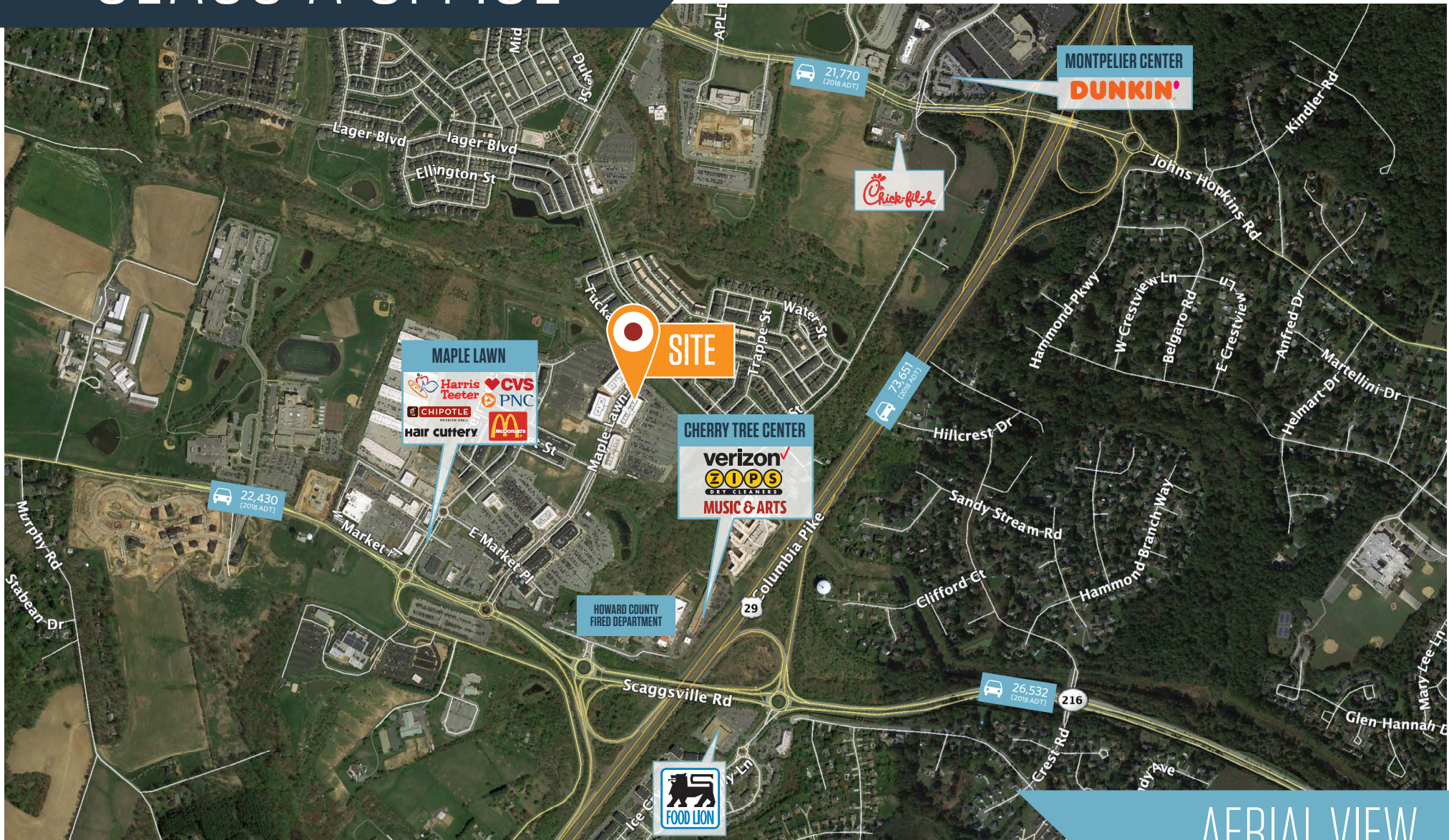
Chuck Breitenother
cbreitenother@klnb.com
443-574-1422

9881 Broken Land Pkwy, #300
Columbia, MD 21046
klnb.com



CLASS A OFFICE

8115 Maple Lawn Boulevard, Fulton, MD 20759
Howard County



AERIAL VIEW

Abby Glassberg
aglassberg@klnb.com
443-574-1433

Chuck Breitenother
cbreitenother@klnb.com
443-574-1422

9881 Broken Land Pkwy, #300
Columbia, MD 21046
klnb.com

NAklnb

CLASS A OFFICE

8115 Maple Lawn Boulevard, Fulton, MD 20759
Howard County



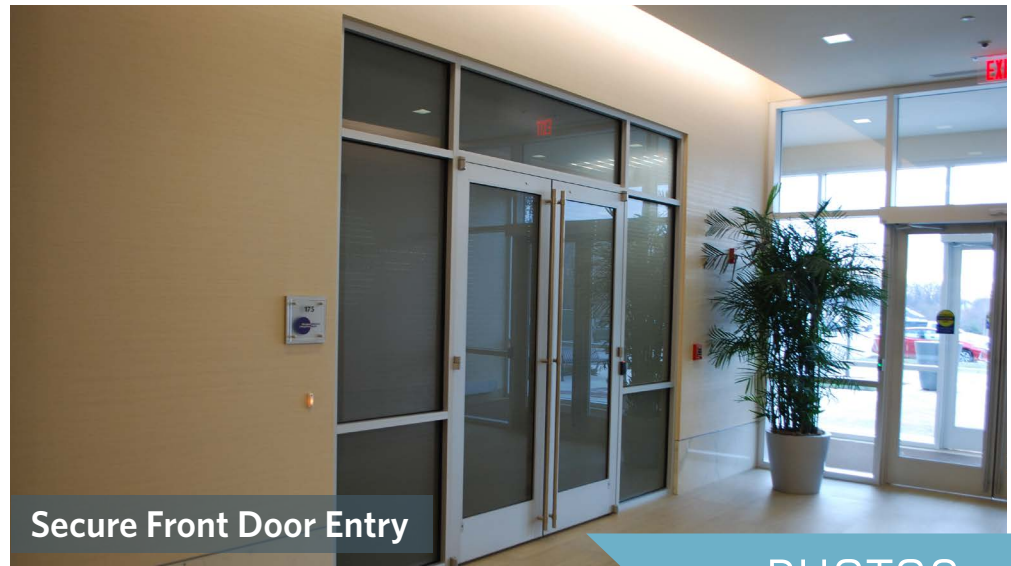
Elegant Lobby Space



Classic Cubical Area with Glass Ceiling Height Transom



State-Of-The-Art Conference Room



Secure Front Door Entry

PHOTOS

Abby Glassberg
aglassberg@klnb.com
443-574-1433

Chuck Breitenother
cbreitenother@klnb.com
443-574-1422

9881 Broken Land Pkwy, #300
Columbia, MD 21046
klnb.com

NAIklnb

CLASS A OFFICE

8115 Maple Lawn Boulevard, Fulton, MD 20759
Howard County



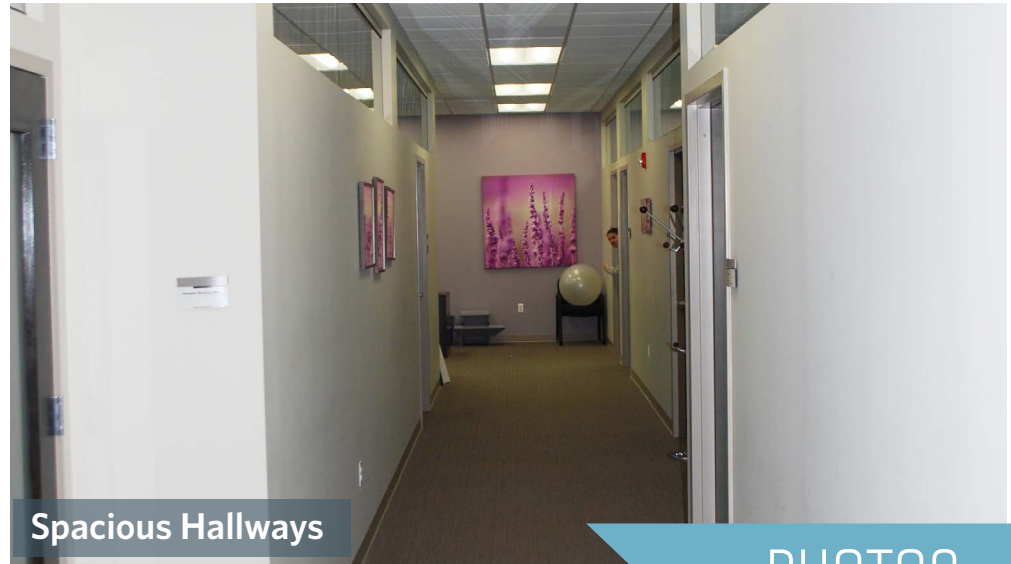
Fully Equipped Kitchenette



Large Multi-Functional Rooms



Open Office Area



Spacious Hallways

PHOTOS

Abby Glassberg
aglassberg@klnb.com
443-574-1433

Chuck Breitenother
cbreitenother@klnb.com
443-574-1422

9881 Broken Land Pkwy, #300
Columbia, MD 21046
klnb.com

NAIklnb

CLASS A OFFICE

8115 Maple Lawn Boulevard Fulton, MD 20759
Howard County

CLICK TO VIEW PROPERTY WEBSITE

For More Information, Please Contact:

Abby Glassberg

aglassberg@klnb.com
443-574-1433

Chuck Breitenother

cbreitenother@klnb.com
443-574-1422

9881 Broken Land Parkway, Suite 300
Columbia, MD 21046

klnb.com

 facebook.com/KLNB

 [@KLNBLLC](https://twitter.com/KLNBLLC)

 linkedin.com/company/klnb

 instagram.com/klnbllc

While we have no reason to doubt the accuracy of any of the information supplied, we cannot, and do not, guarantee its accuracy. All information should be independently verified prior to a purchase or lease of the property. We are not responsible for errors, omissions, misuse, or misinterpretation of information contained herein and make no warranty of any kind, express or implied, with respect to the property or any other matters.

NAIklnb