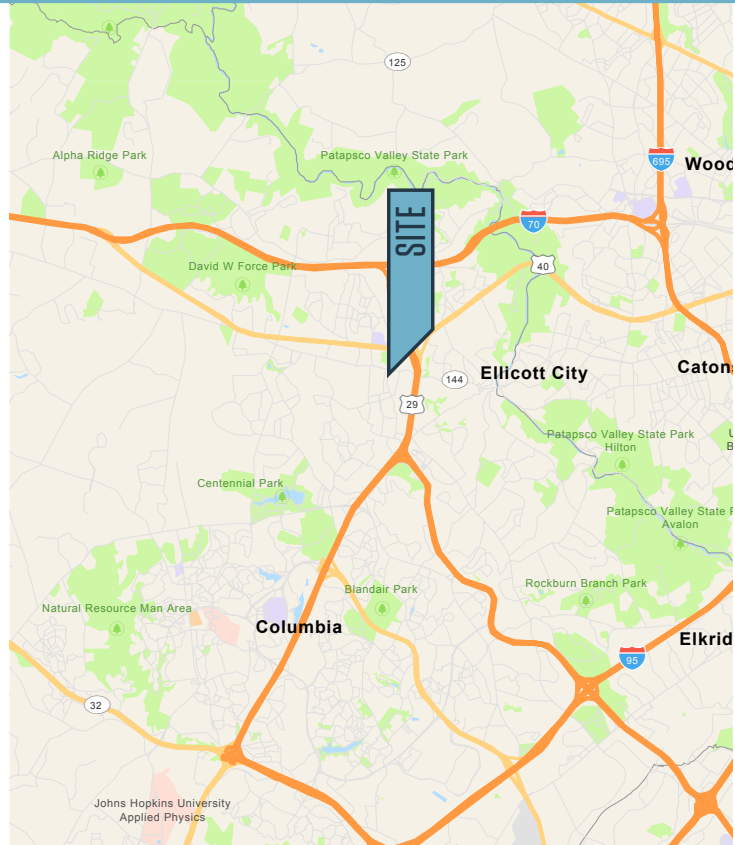




FOR LEASE

PROPERTY HIGHLIGHTS:

- **Building Size:** 6,145 SF
- **Asking Price:** Negotiable
- **Available Spaces:** » 2,142 SF (Former hair salon)
» 1,983 SF
» 4,125 SF Total (contiguous)
- **Parking:** 28 surface parking
- Nearby access to Routes 40, 29 & 100



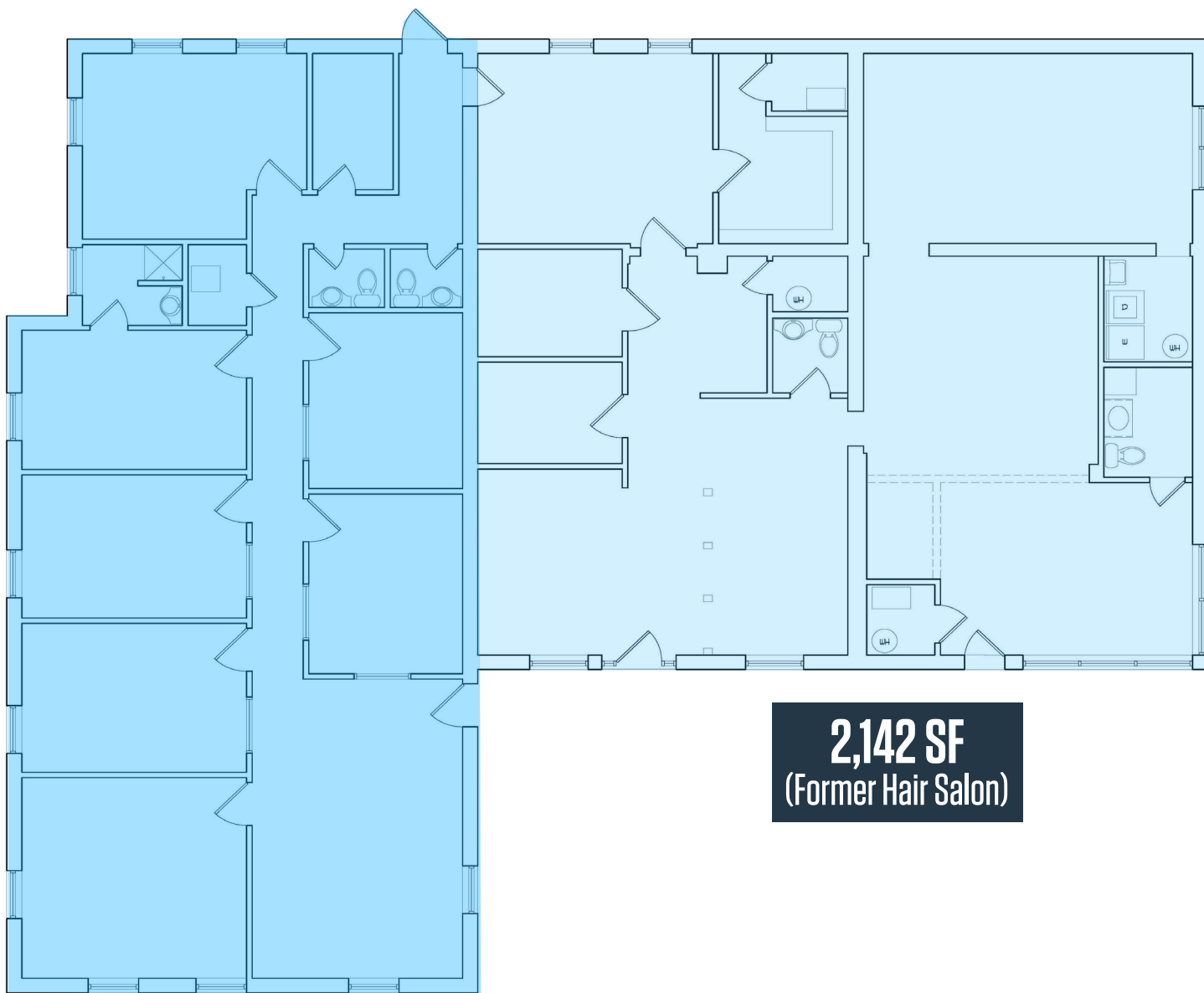
NEARBY AMENITIES:



3600 SAINT JOHN DRIVE

Ellicott City, MD 21042 | Howard County

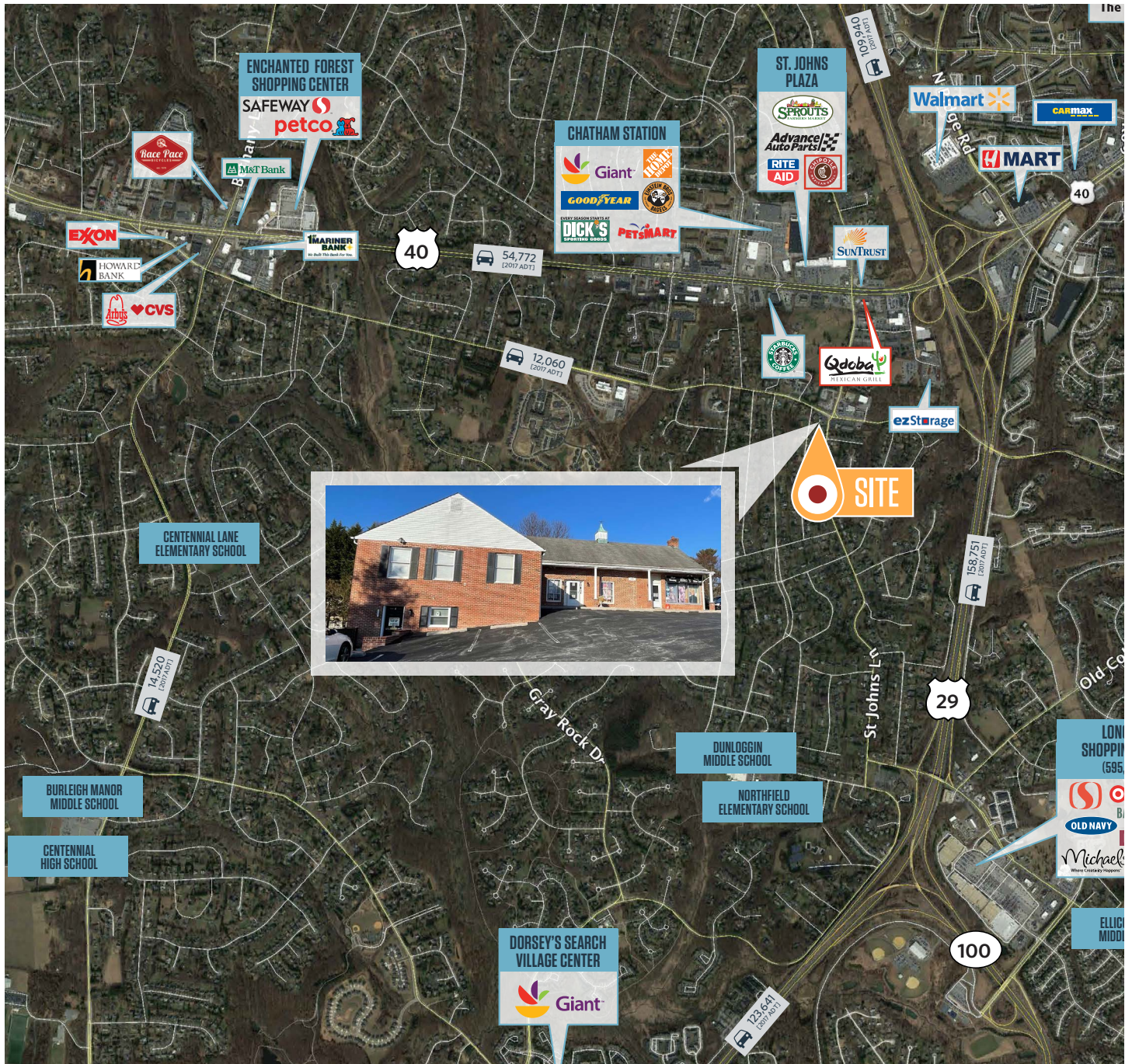
FLOOR PLAN



2,142 SF
(Former Hair Salon)

1,983 SF

AERIAL VIEW



3600 SAINT JOHN LANE

Ellicott City, MD 21042 | Howard County

CLICK TO VIEW PROPERTY WEBSITE

For More Information, Please Contact:

Austin Eber

aeber@klnb.com

443-574-1414

9881 Broken Land Parkway, Suite 300
Columbia, MD 21046

klnb.com

 facebook.com/KLNB

 [@KLNBLLC](https://twitter.com/KLNBLLC)

 linkedin.com/company/klnb

 instagram.com/klnbllc

While we have no reason to doubt the accuracy of any of the information supplied, we cannot, and do not, guarantee its accuracy. All information should be independently verified prior to a purchase or lease of the property. We are not responsible for errors, omissions, misuse, or misinterpretation of information contained herein and make no warranty of any kind, express or implied, with respect to the property or any other matters.

