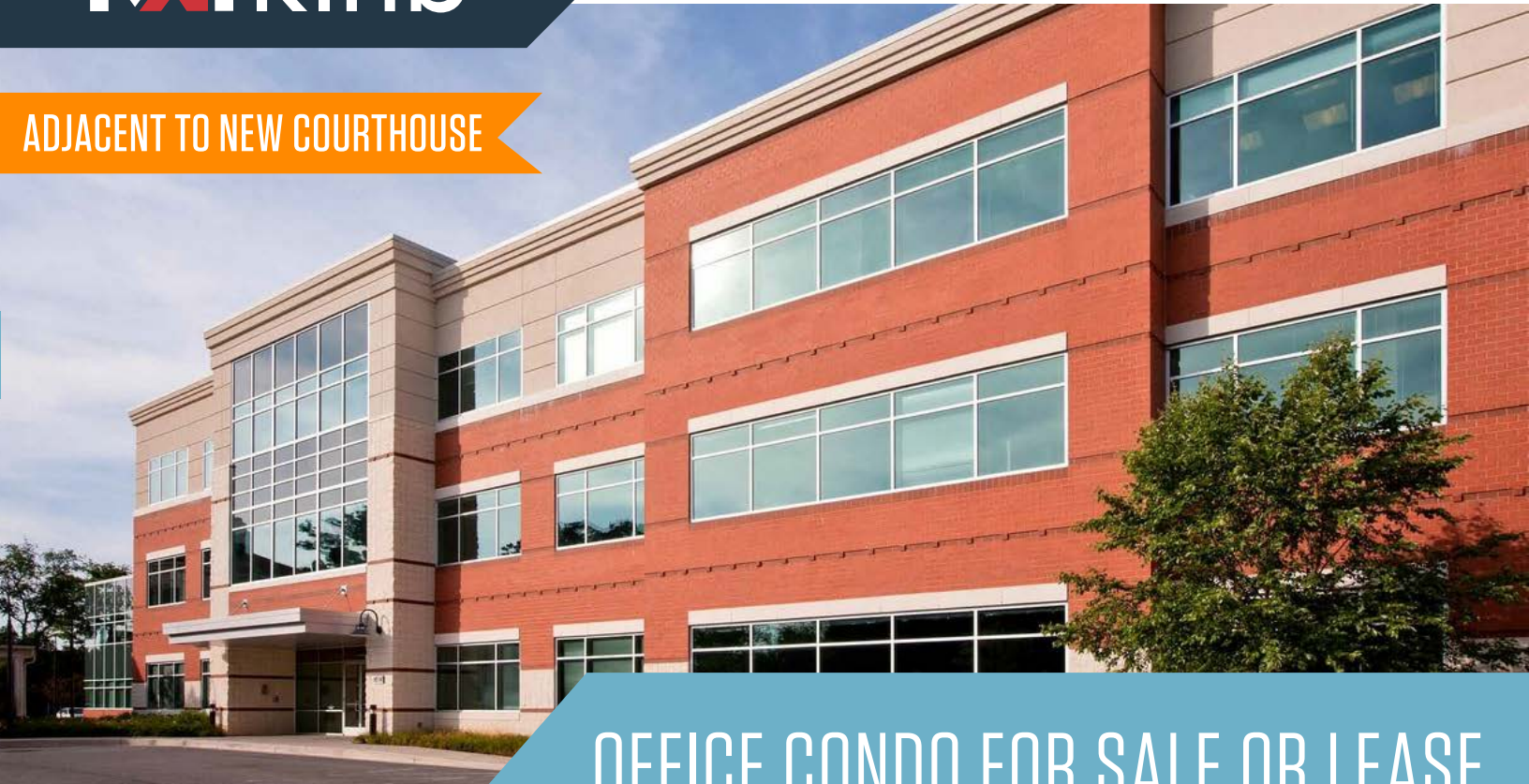


ADJACENT TO NEW COURTHOUSE

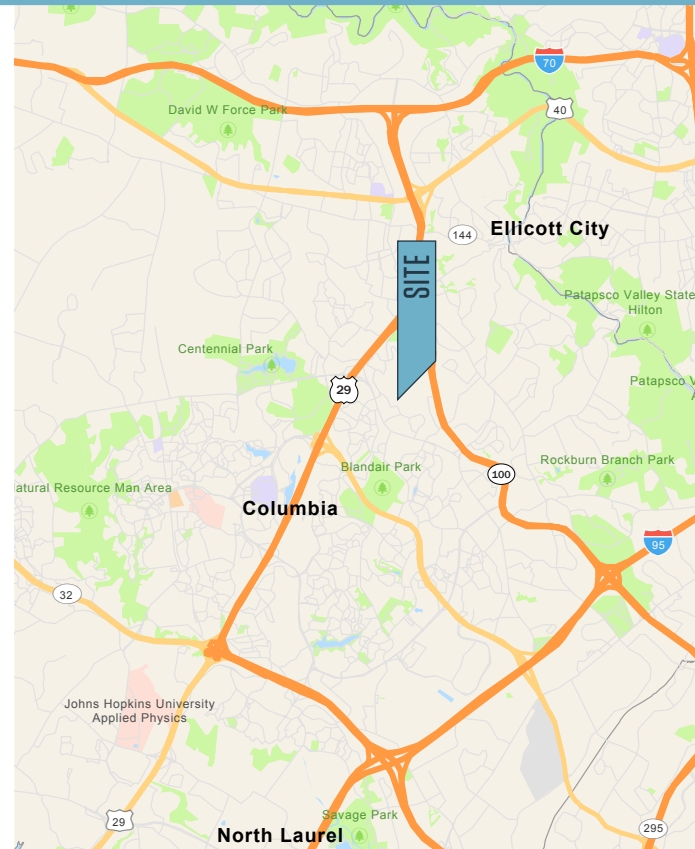


OFFICE CONDO FOR SALE OR LEASE

PROPERTY HIGHLIGHTS

Suite Highlights

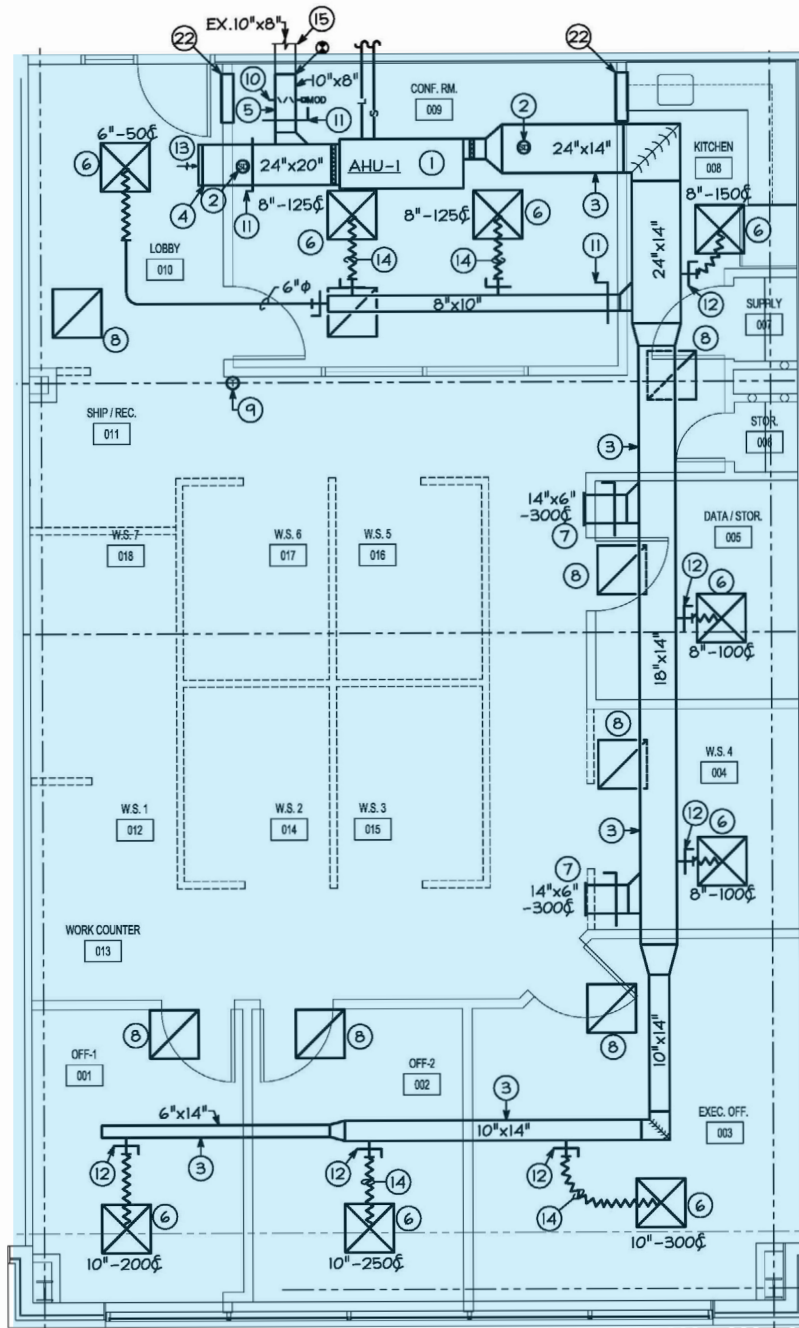
- **Class A Office Space Available: Suite 103 - 1,911 SF**
 - First floor suite with efficient build-out
 - Separately metered utilities and energy efficient construction
 - High-speed internet access available
 - Lighted surface parking available at a ratio of 4 spaces per 1,000 SF leased
 - Upgraded finishes and next to Howard County Courthouse
-
- **Sale Price:** \$506,415 / \$265 per square foot
 - **Lease Price:** \$25 per square foot Modified Gross
 - **2022 Taxes:** \$5,433 yearly
 - **Condo Fees/Sewer:** \$696.09 monthly



9256 BENDIX ROAD

Suite 103, Columbia, MD 21045 | Howard County

FLOOR PLAN | SUITE 103



PHOTOS



9256 BENDIX ROAD

Suite 103, Columbia, MD 21045 | Howard County

[CLICK TO VIEW PROPERTY WEBSITE](#)

For More Information, Please Contact:

Austin Eber

aeber@klnb.com


443-574-1414

9881 Broken Land Parkway, Suite 300

Columbia, MD 21046

klnb.com

 facebook.com/KLNB

 [@KLNBLLC](https://twitter.com/KLNBLLC)

 linkedin.com/company/klnb

 instagram.com/klnbllc

While we have no reason to doubt the accuracy of any of the information supplied, we cannot, and do not, guarantee its accuracy. All information should be independently verified prior to a purchase or lease of the property. We are not responsible for errors, omissions, misuse, or misinterpretation of information contained herein and make no warranty of any kind, express or implied, with respect to the property or any other matters.

