



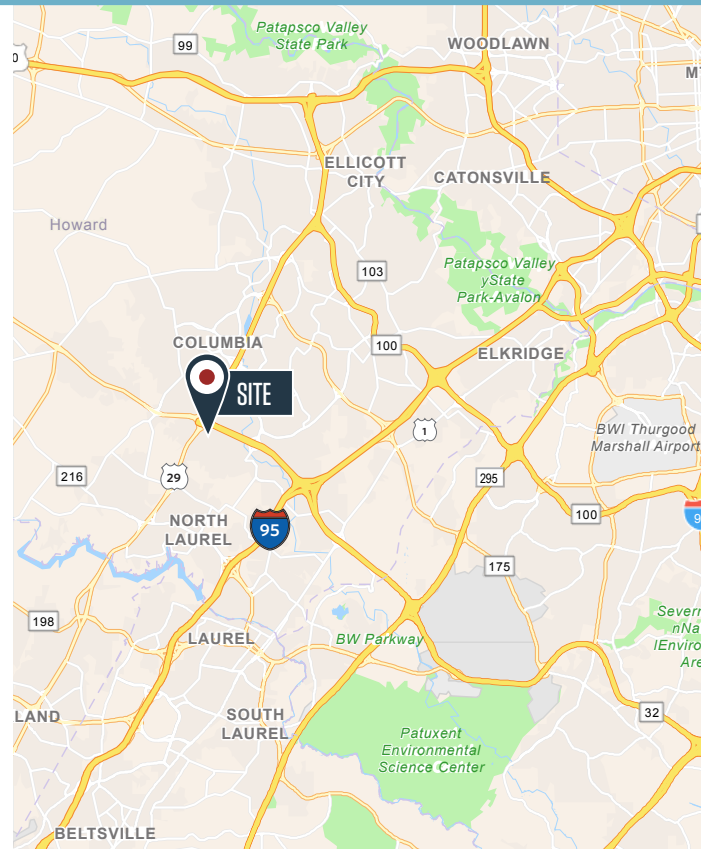
OFFICE FOR LEASE

AVAILABLE:

- **Suite 100:** 2,503 SF

PROPERTY HIGHLIGHTS:

- Well maintained, two-story office building
- **Rental Rate:** \$18.00 psf plus utilities & cleaning
- **Parking:** Ample free surface parking
- **Access:** Two minutes to Route 32; easy access to Route 29 and Route 198
- **Outdoor Space:** Patio area adjacent to suite
- **Amenities:** Banks, restaurants, gas stations and shopping are less than one mile away



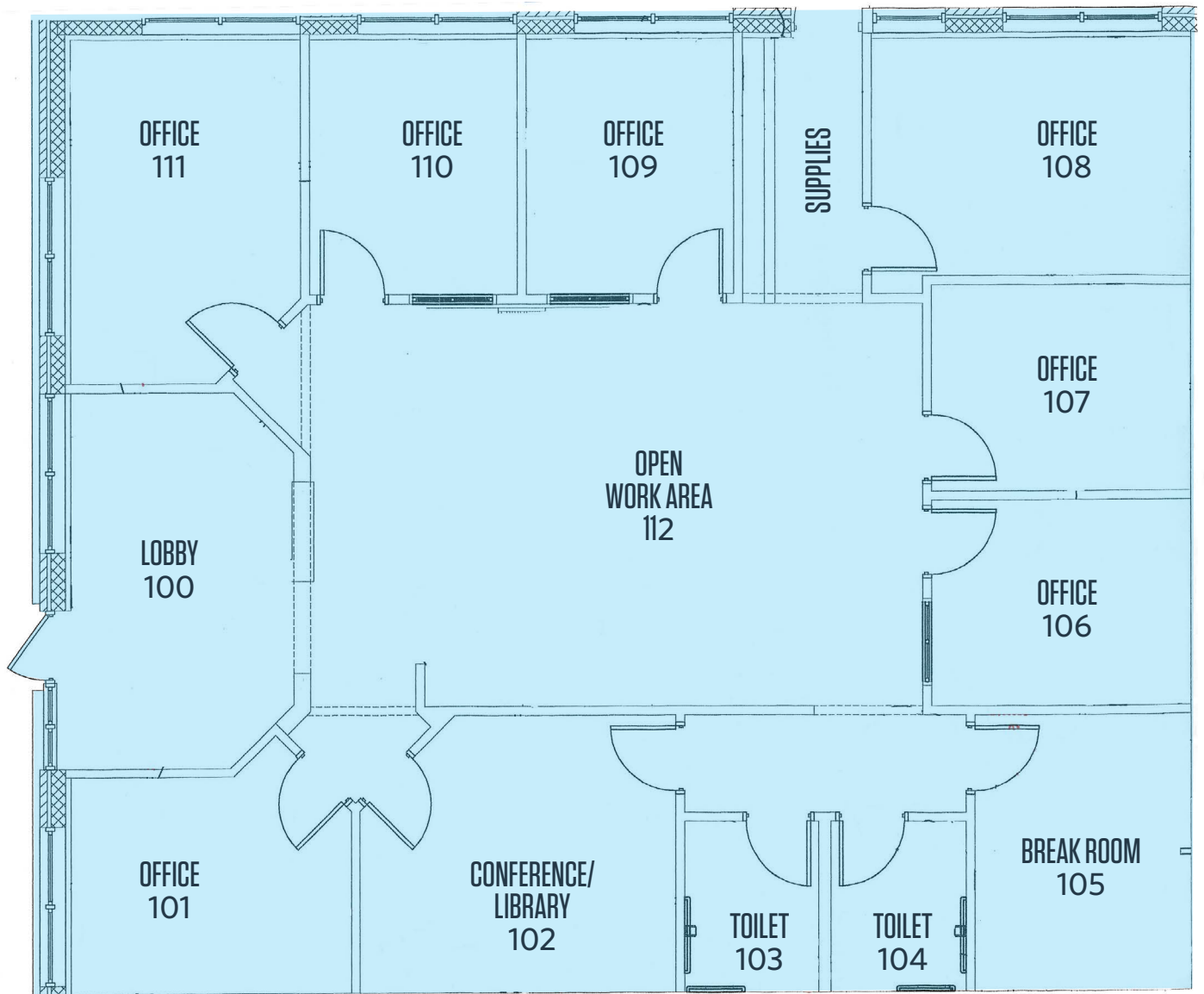
Abby Glassberg
aglassberg@klnb.com
443-574-1433

9881 Broken Land Parkway, Suite 300
Columbia, MD 21046
klnb.com

10380 OLD COLUMBIA RD

Columbia, MD 21046 | Howard County

FLOOR PLAN



MARKET AERIAL



10380 OLD COLUMBIA RD

Columbia, MD 21046 | Howard County

[CLICK TO VIEW PROPERTY WEBSITE](#)

For More Information, Please Contact:

Abby Glassberg

aglassberg@klnb.com

443-574-1433

9881 Broken Land Parkway, Suite 300
Columbia, MD 21046

klnb.com

 facebook.com/KLNB

 [@KLNBLLC](https://twitter.com/KLNBLLC)

 linkedin.com/company/klnb

 instagram.com/klnblc

While we have no reason to doubt the accuracy of any of the information supplied, we cannot, and do not, guarantee its accuracy. All information should be independently verified prior to a purchase or lease of the property. We are not responsible for errors, omissions, misuse, or misinterpretation of information contained herein and make no warranty of any kind, express or implied, with respect to the property or any other matters.