

CAPITAL PLAZA

6200 Annapolis Road, Landover Hills, MD 20784
Prince George's County



NOW OPEN



JUST SIGNED



ANCHOR, JUNIOR ANCHOR, PAD SITE & INLINE FOR LEASE



- Exciting redevelopment of Capital Plaza Mall
- Available Space: Anchor, Junior Anchor, Pad Site & Inline
- Easy access to Baltimore Washington Parkway (I-295)
- Special liquor license legislation for restaurants - a license at Capital Plaza does not count against County Quota and earns a bonus license

Joe Mekulski
jmekulski@klnb.com
443-632-1343

John Meyer
jmeyer@klnb.com
443-632-2052

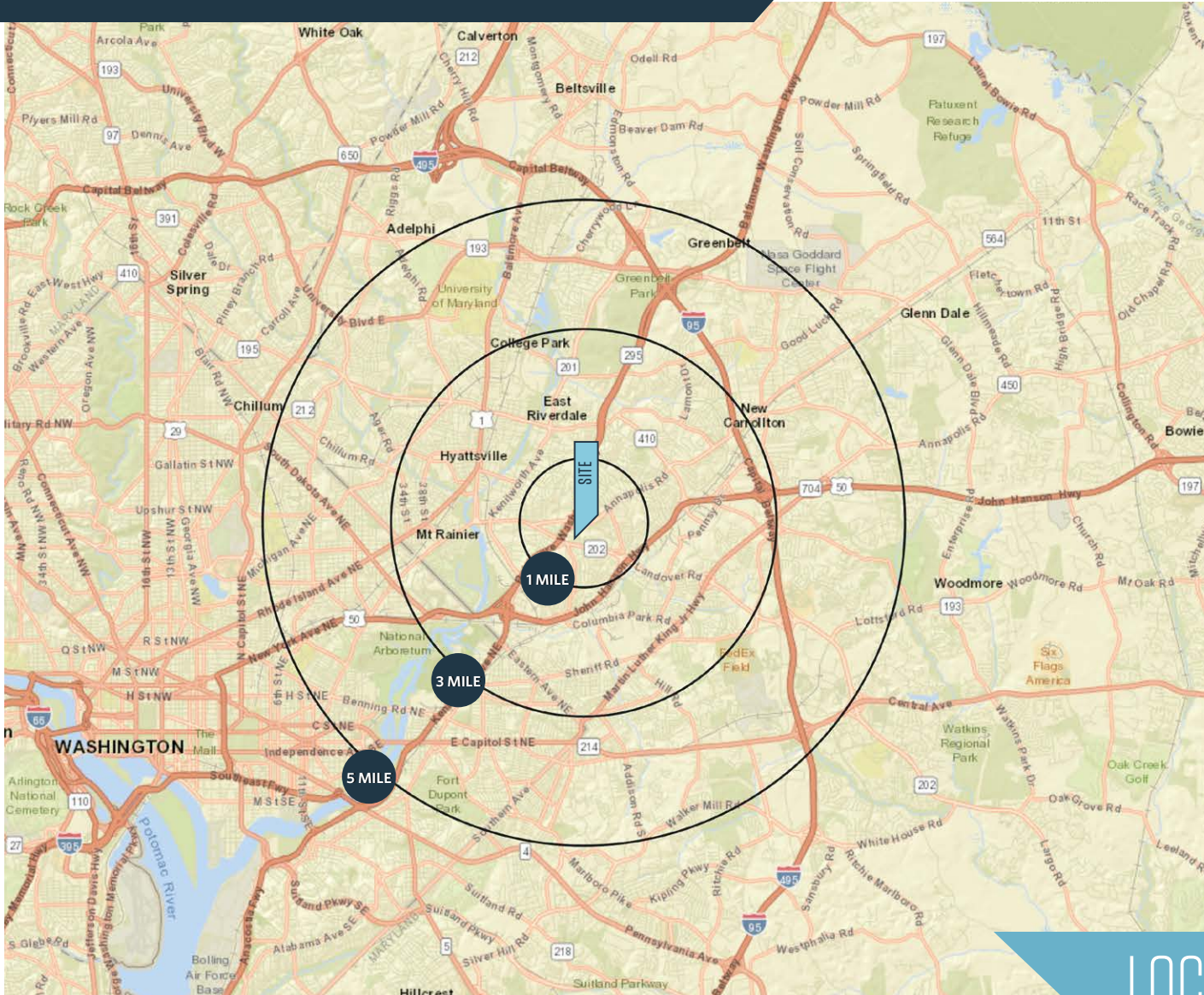
Brian Finkelstein
bfinkelstein@klnb.com
443-632-2076

100 West Road, Suite 505
Towson, MD 21204
klnb.com

klnb

CAPITAL PLAZA

6200 Annapolis Road, Landover Hills, MD 20784
Prince George's County



AVAILABLE SPACE

Anchor, Junior Anchor, Pad Site & Inline

DEMOGRAPHICS | 2021:

1-MILE	3-MILE	5-MILE
Population		
24,238	152,079	447,412
Daytime Population		
4,911	52,231	183,475
Households		
8,068	50,968	156,168
Average HH Income		
\$81,570	84,399	\$87,933

[CLICK TO DOWNLOAD DEMOGRAPHIC REPORT](#)

TRAFFIC COUNTS | 2019:

I-295	111,002 ADT
Annapolis Road	36,741 ADT

LOCATION & DEMOGRAPHICS

Joe Mekulski
jmekulski@klnb.com
443-632-1343

John Meyer
jmeyer@klnb.com
443-632-2052

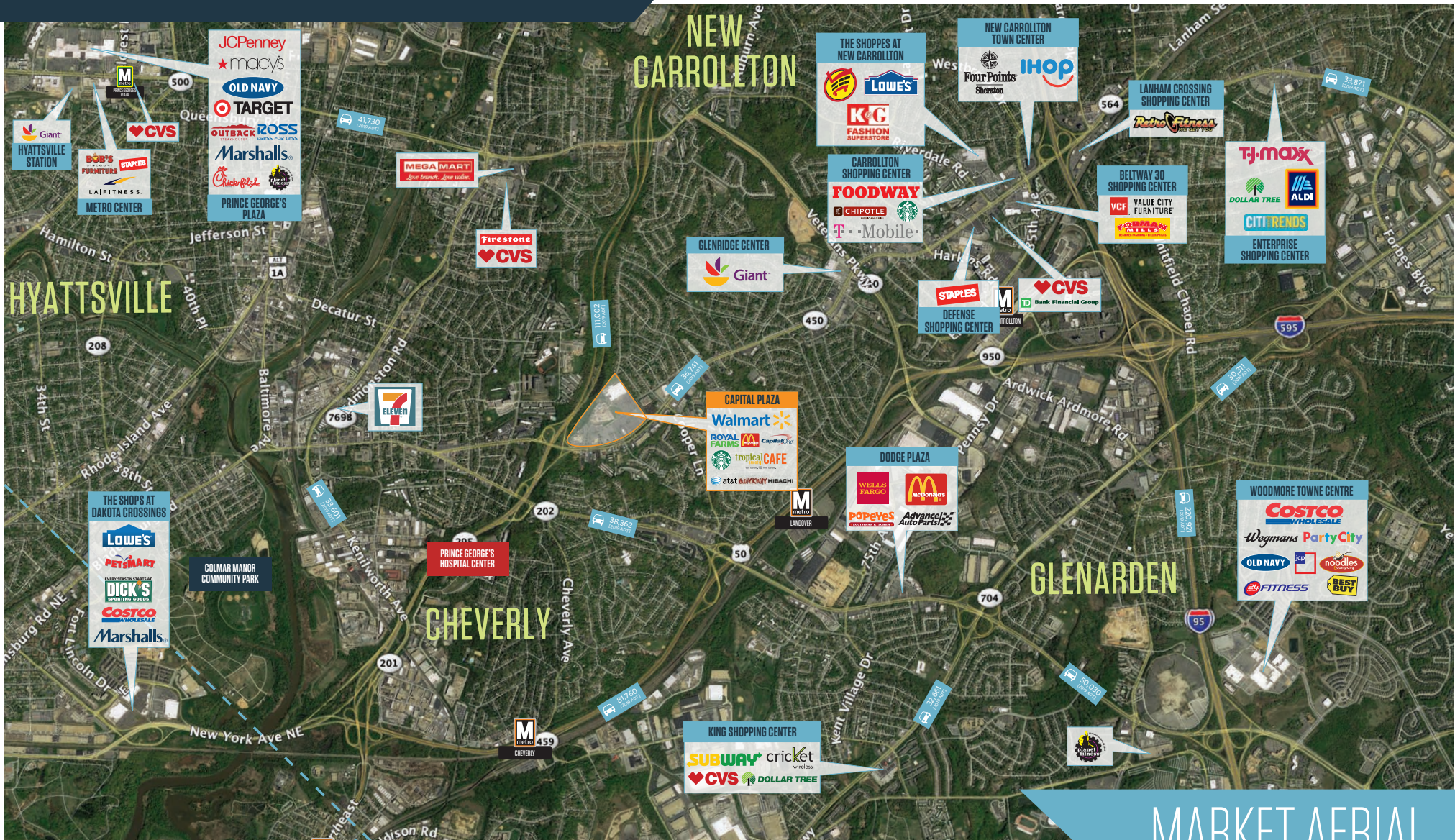
Brian Finkelstein
bfinkelstein@klnb.com
443-632-2076

100 West Road, Suite 505
Towson, MD 21204
klnb.com



CAPITAL PLAZA

6200 Annapolis Road, Landover Hills, MD 20784
Prince George's County



MARKET AERIAL

Joe Mekulski
jmekulski@klnb.com
443-632-1343

John Meyer
jmeyer@klnb.com
443-632-2052

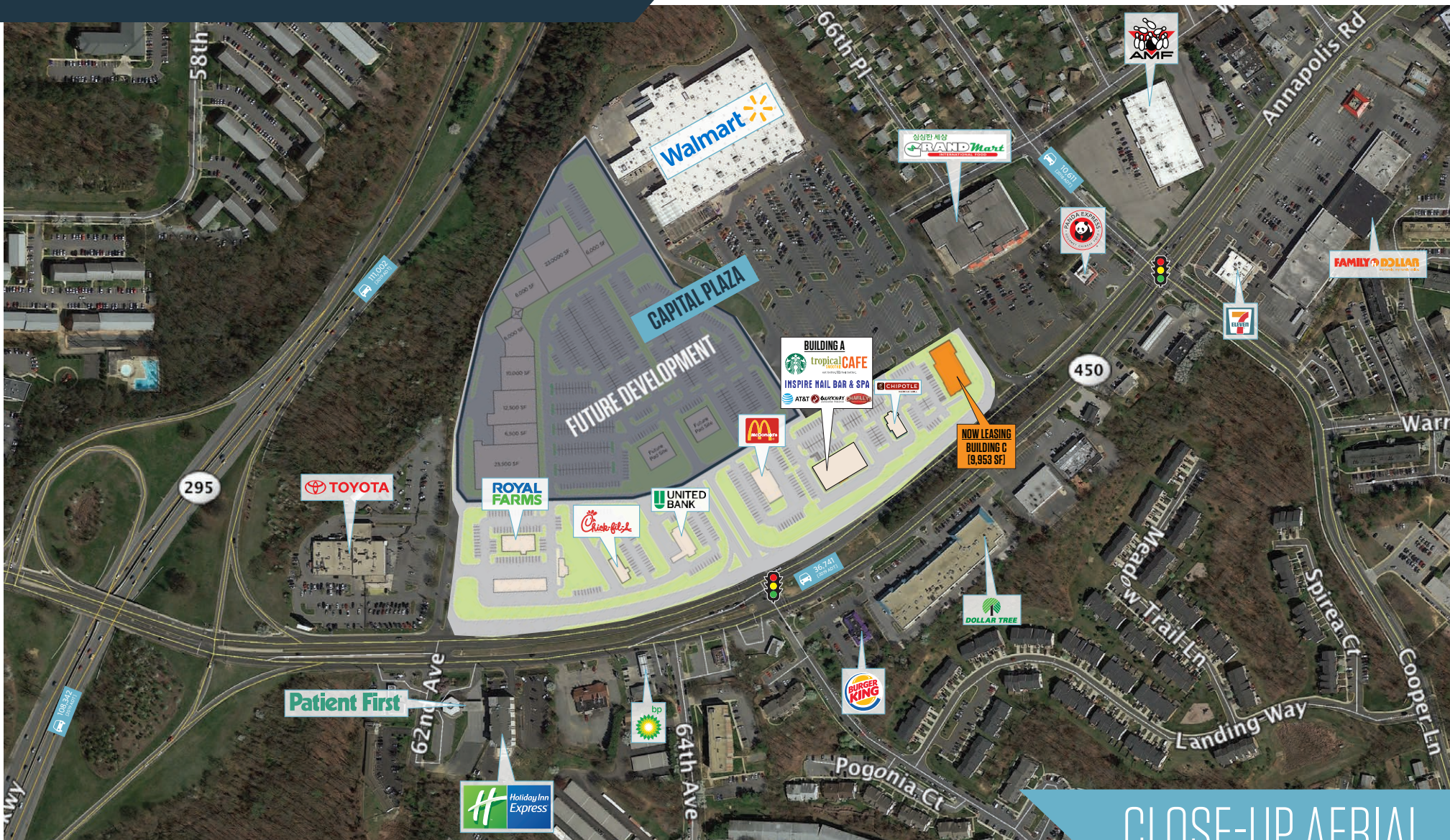
Brian Finkelstein
bfinkelstein@klnb.com
443-632-2076

100 West Road, Suite 505
Towson, MD 21204
klnb.com



CAPITAL PLAZA

6200 Annapolis Road, Landover Hills, MD 20784
Prince George's County



CLOSE-UP AERIAL

Joe Mekulski
jmekulski@klnb.com
443-632-1343

John Meyer
jmeyer@klnb.com
443-632-2052

Brian Finkelstein
bfinkelstein@klnb.com
443-632-2076

100 West Road, Suite 505
Towson, MD 21204
klnb.com



CAPITAL PLAZA

6200 Annapolis Road, Landover Hills, MD 20784
Prince George's County



Joe Mekulski
jmekulski@klnb.com
443-632-1343

John Meyer
jmeyer@klnb.com
443-632-2052

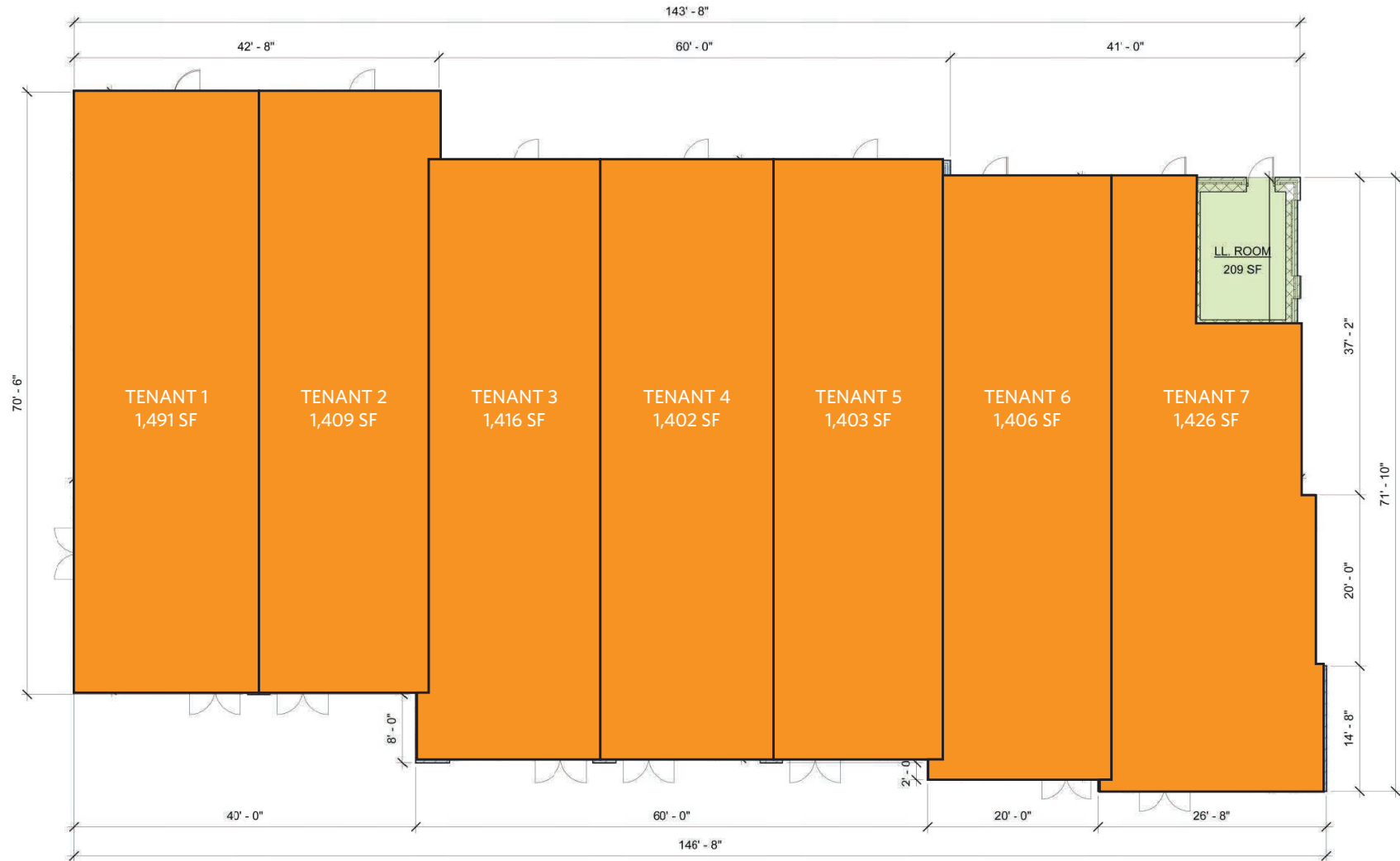
Brian Finkelstein
bfinkelstein@klnb.com
443-632-2076

100 West Road, Suite 505
Towson, MD 21204
klnb.com



CAPITAL PLAZA

6200 Annapolis Road, Landover Hills, MD 20784
Prince George's County



BUILDING "C" SITE PLAN

Joe Mekulski
jmekulski@klnb.com
443-632-1343

John Meyer
jmeyer@klnb.com
443-632-2052

Brian Finkelstein
bfinkelstein@klnb.com
443-632-2076

100 West Road, Suite 505
Towson, MD 21204
klnb.com



CAPITAL PLAZA

6200 Annapolis Road, Landover Hills, MD 20784
Prince George's County



BUILDING C

Joe Mekulski
jmekulski@klnb.com
443-632-1343

John Meyer
jmeyer@klnb.com
443-632-2052

Brian Finkelstein
bfinkelstein@klnb.com
443-632-2076

100 West Road, Suite 505
Towson, MD 21204
klnb.com



CAPITAL PLAZA

6200 Annapolis Road, Landover Hills, MD 20784
Prince George's County

United States Maryland Local: 15mi

12 / 202 94% 8 / 128 94% 1 / 9 94%

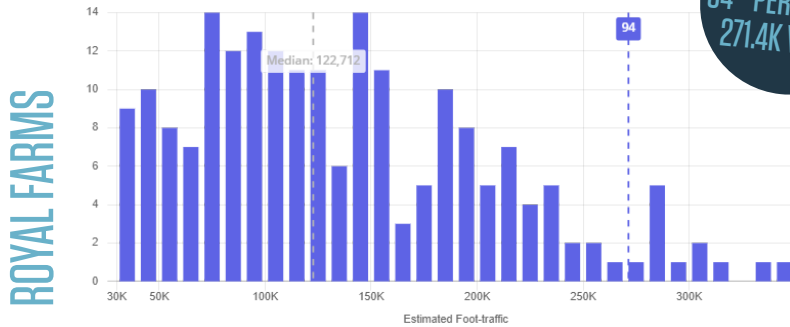
[View List](#) [View List](#) [View List](#)

Benchmark with venues near: **Royal Farms**

Within: Chain: Royal Far... Region: United Stat...

Total venues: 202 Coverage: 88%

TOTAL VISITS
94TH PERCENTILE
271.4K VISITS



United States Maryland Local: 15mi

549 / 12,427 96% 11 / 252 96% 13 / 96 87%

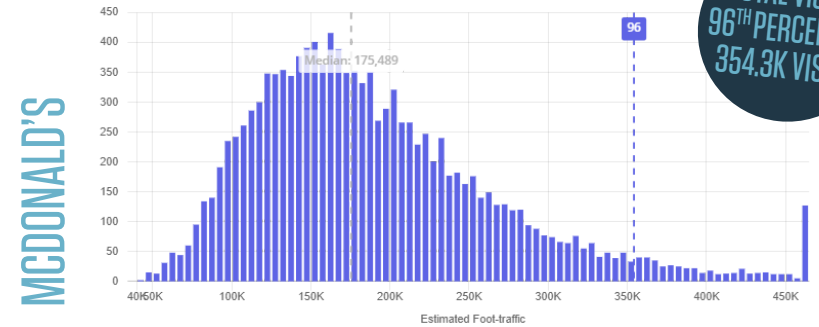
[View List](#) [View List](#) [View List](#)

Benchmark with venues near: **McDonald's**

Within: Chain: McDonal... Region: United Stat...

Total venues: 12,427 Coverage: 93%

TOTAL VISITS
96TH PERCENTILE
354.3K VISITS



United States Maryland Local: 15mi

633 / 3,912 84% 10 / 47 80% 2 / 8 81%

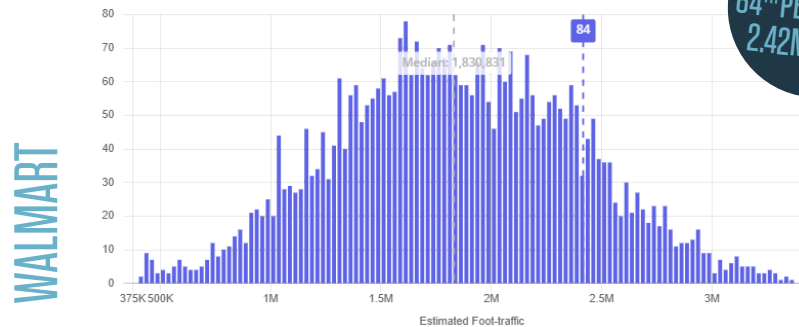
[View List](#) [View List](#) [View List](#)

Benchmark with venues near: **Walmart**

Within: Chain: Walmart Region: United States

Total venues: 3,912 Coverage: 99%

TOTAL VISITS
84TH PERCENTILE
2.42M VISITS



PLACER

JAN 1, 2019 - DEC 31, 2019 | DATA PROVIDED BY PLACER LABS INC. (WWW.PLACER.AI)

Joe Mekulski
jmekulski@klnb.com
443-632-1343

John Meyer
jmeyer@klnb.com
443-632-2052

Brian Finkelstein
bfinkelstein@klnb.com
443-632-2076

100 West Road, Suite 505
Towson, MD 21204
klnb.com



CAPITAL PLAZA

6200 Annapolis Road, Landover Hills, MD 20784
Prince George's County

CLICK TO VIEW PROPERTY WEBSITE

For More Information, Please Contact:

Joe Mekulski

jmekulski@klnb.com
443-632-1343

John Meyer

jmeyer@klnb.com
443-632-2052

Brian Finkelstein

bfinkelstein@klnb.com
443-632-2076

100 West Road, Suite 505
Towson, MD 21204

klnb.com

 facebook.com/KLNB

 [@KLNBLLC](https://twitter.com/KLNBLLC)

 linkedin.com/company/klnb

 instagram.com/klnbllc

While we have no reason to doubt the accuracy of any of the information supplied, we cannot, and do not, guarantee its accuracy. All information should be independently verified prior to a purchase or lease of the property. We are not responsible for errors, omissions, misuse, or misinterpretation of information contained herein and make no warranty of any kind, express or implied, with respect to the property or any other matters.

klnb