



JOIN THESE RETAILERS

RETAIL FOR LEASE

- 2,500 RSF former Potbelly with patio along I Street
- 5,674 SF former Elephant & Castle with large patio along 19th street
- Across from food hall at International Square opening fall 2022
- Captive daytime audience of IMF, World Bank, Federal Reserve and Blank Rome
- 5 minute walk to George Washington University
- One block to Farragut West Metro (19,905 RPD)



KIM STEIN

kstein@klnb.com | 202-652-2338

JENNIFER PRICE

jprice@klnb.com | 202-420-7768

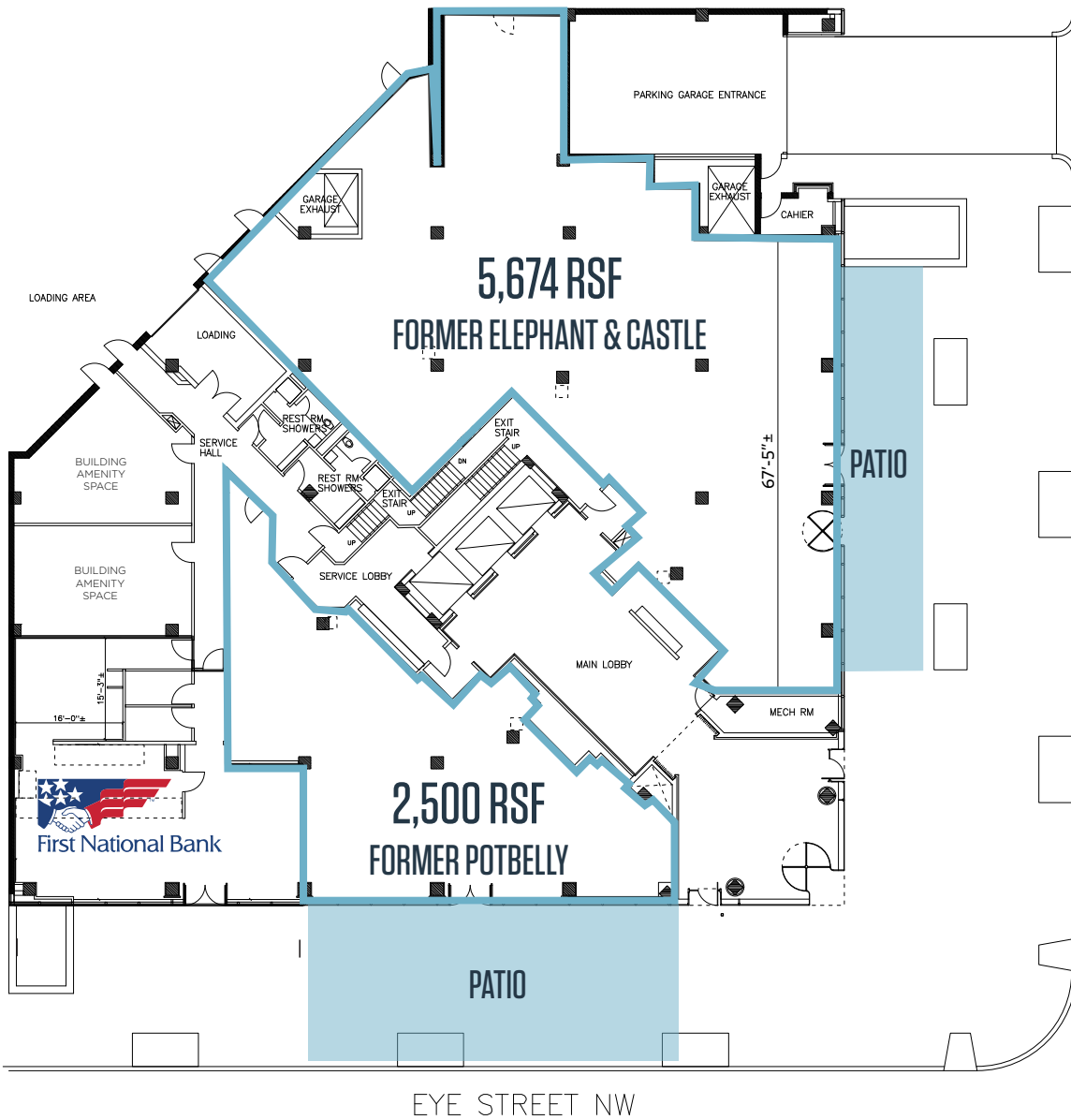
ALEX MEYER

ameyer@klnb.com | 202-420-7770

SITE PLAN

900 19TH STREET, NW

WASHINGTON, DC 20006



FORMER ELEPHANT & CASTLE



FORMER POTBELLY



KIM STEIN

kstein@klnb.com | 202-652-2338

JENNIFER PRICE

jprice@klnb.com | 202-420-7768

ALEX MEYER

ameyer@klnb.com | 202-420-7770

klnb

INTERIOR

900 19TH STREET, NW

WASHINGTON, DC 20006



KIM STEIN

kstein@klnb.com | 202-652-2338

JENNIFER PRICE

jprice@klnb.com | 202-420-7768

ALEX MEYER

ameyer@klnb.com | 202-420-7770

klnb



KIM STEIN

kstein@klnb.com | 202-652-2338

JENNIFER PRICE

jprice@klnb.com | 202-420-7768

ALEX MEYER

ameyer@klnb.com | 202-420-7770

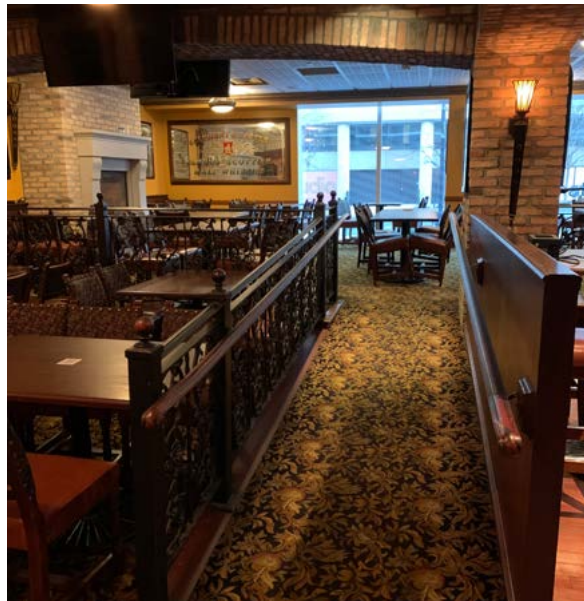
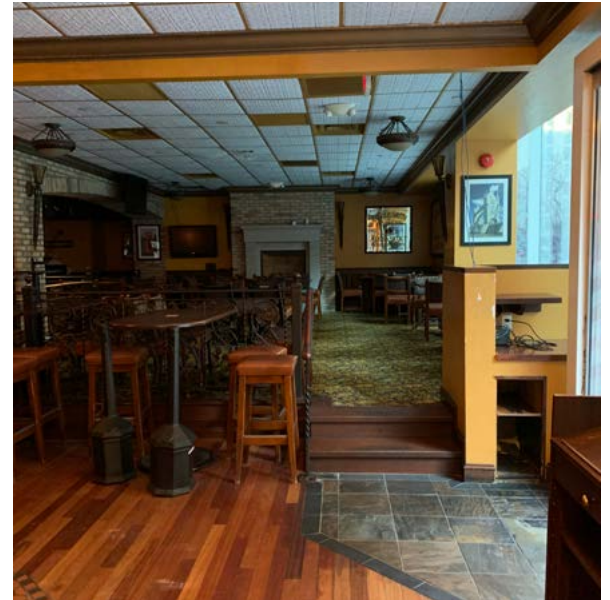
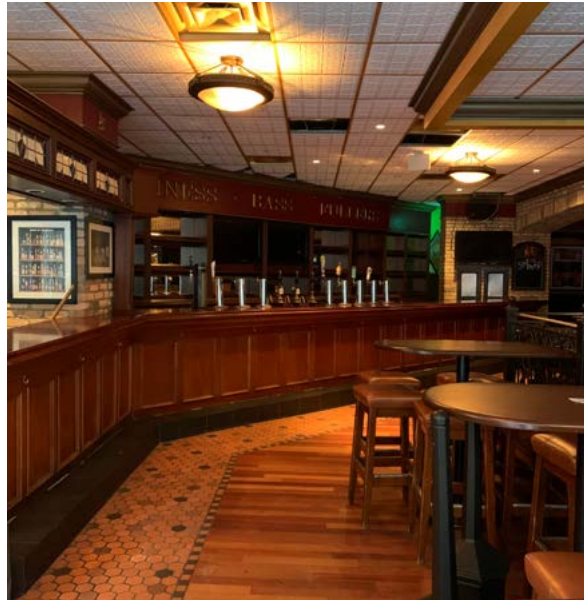
INTERIOR

900 19TH STREET, NW

WASHINGTON, DC 20006



FORMER ELEPHANT & CASTLE



KIM STEIN

kstein@klnb.com | 202-652-2338

JENNIFER PRICE

jprice@klnb.com | 202-420-7768

ALEX MEYER

ameyer@klnb.com | 202-420-7770

klnb



FORMER ELEPHANT & CASTLE



KIM STEIN

kstein@klnb.com | 202-652-2338

JENNIFER PRICE

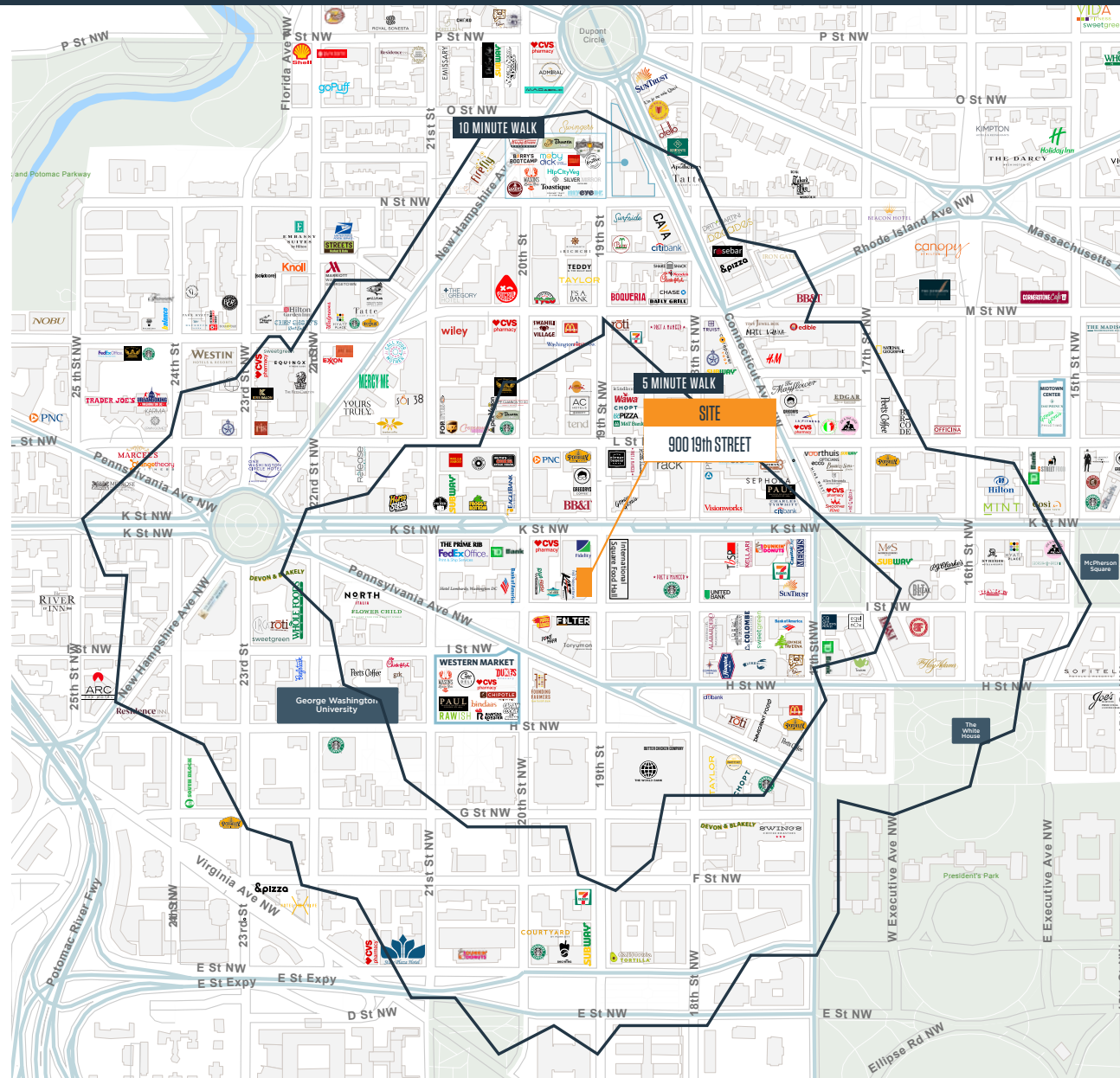
jprice@klnb.com | 202-420-7768

ALEX MEYER

ameyer@klnb.com | 202-420-7770

900 19TH STREET, NW

WASHINGTON, DC 20006



KIM STEIN

kstein@klnb.com | 202-652-2338

JENNIFER PRICE

jprice@klnb.com | 202-420-7768

ALEX MEYER

ameyer@klnb.com | 202-420-7770



900 19TH STREET, NW

WASHINGTON, DC 20006

FOR MORE INFORMATION, PLEASE CONTACT:

KIM STEIN

kstein@klnb.com
202-652-2338

JENNIFER PRICE

jprice@klnb.com
202-420-7768

ALEX MEYER

ameyer@klnb.com
202-420-7770

1130 Connecticut Avenue, Suite 600, Washington, DC 20036

.....

klnb.com

 facebook.com/KLNB

 [@KLNBLLC](https://twitter.com/KLNBLLC)

 linkedin.com/company/klnb

 instagram.com/klnbllc

CLICK TO VIEW PROPERTY WEBSITE

While we have no reason to doubt the accuracy of any of the information supplied, we cannot, and do not, guarantee its accuracy. All information should be independently verified prior to a purchase or lease of the property. We are not responsible for errors, omissions, misuse, or misinterpretation of information contained herein and make no warranty of any kind, express or implied, with respect to the property or any other matters.