

RITCHIE HIGHWAY SHOPPING CENTER

5700 Ritchie Highway, Brooklyn Park, MD 21225
Anne Arundel County



RETAIL FOR LEASE

JOIN:



- Available: 6,000 SF, 3,200 SF & 600 SF [2nd Generation Barber]
- Located directly off of Ritchie Hwy with strong visibility to the road
- 1 mile north of I-695 and 2 miles north of I-97

Michael Ginsburg
mginsburg@klnb.com
443-632-2041

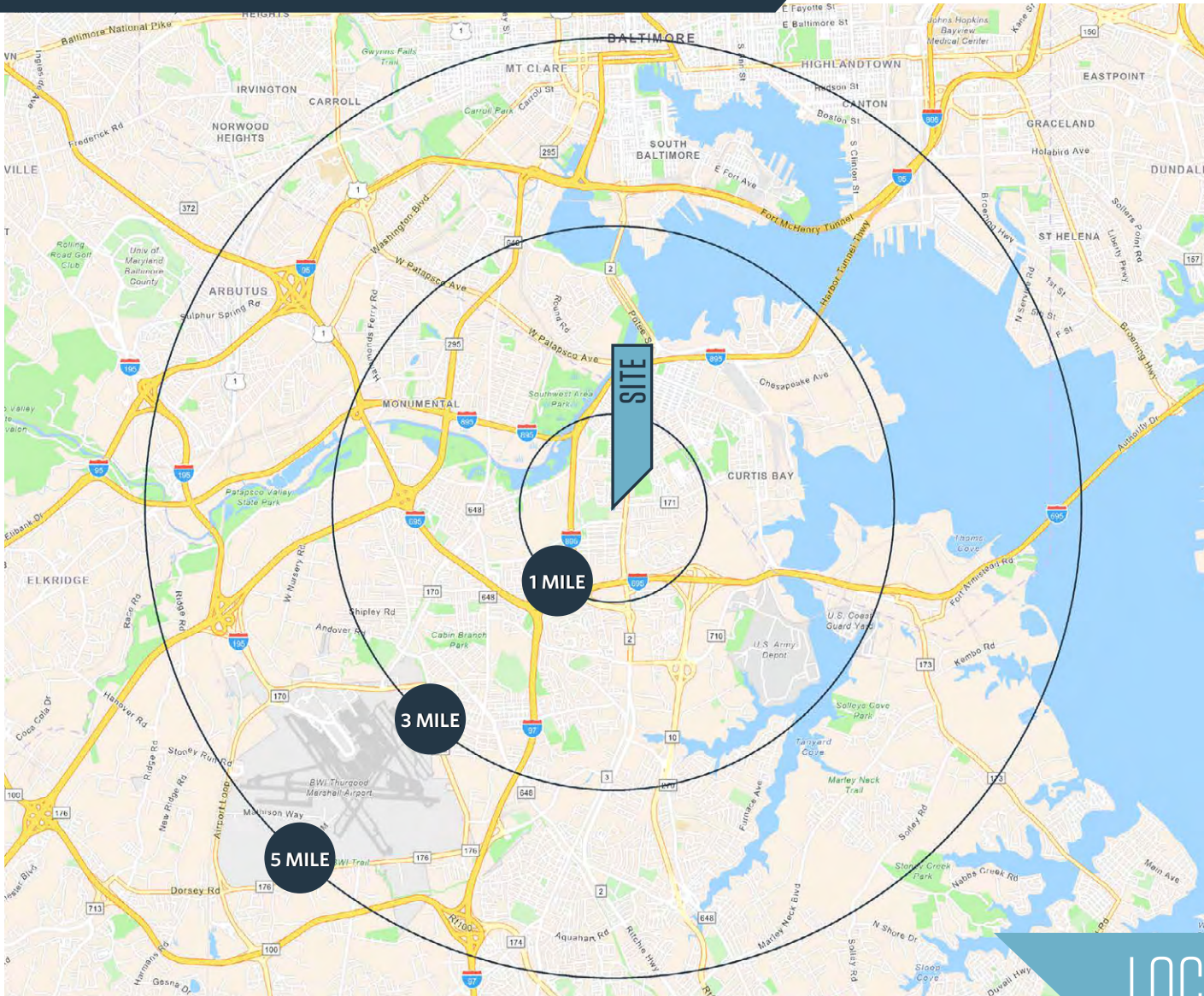
John Meyer
jmeyer@klnb.com
443-632-2052

100 West Road, Suite 505
Towson, MD 21204
klnb.com

klnb

RITCHIE HIGHWAY SHOPPING CENTER

5700 Ritchie Highway, Brooklyn Park, MD 21225
Anne Arundel County



AVAILABLE SPACE

600 SF
3,200 SF
6,000 SF

DEMOGRAPHICS | 2023:

	1-MILE	3-MILE	5-MILE
Population	13,482	85,421	209,042
Daytime Population	10,656	88,285	324,564
Households	4,725	31,463	86,208
Average HH Income	\$93,989	\$84,953	\$11,768

[CLICK TO DOWNLOAD DEMOGRAPHIC REPORT](#)

TRAFFIC COUNTS | 2022:

Ritchie Highway (Rt. 2) 36,352 ADT

LOCATION & DEMOGRAPHICS

Michael Ginsburg
mginsburg@klnb.com
443-632-2041

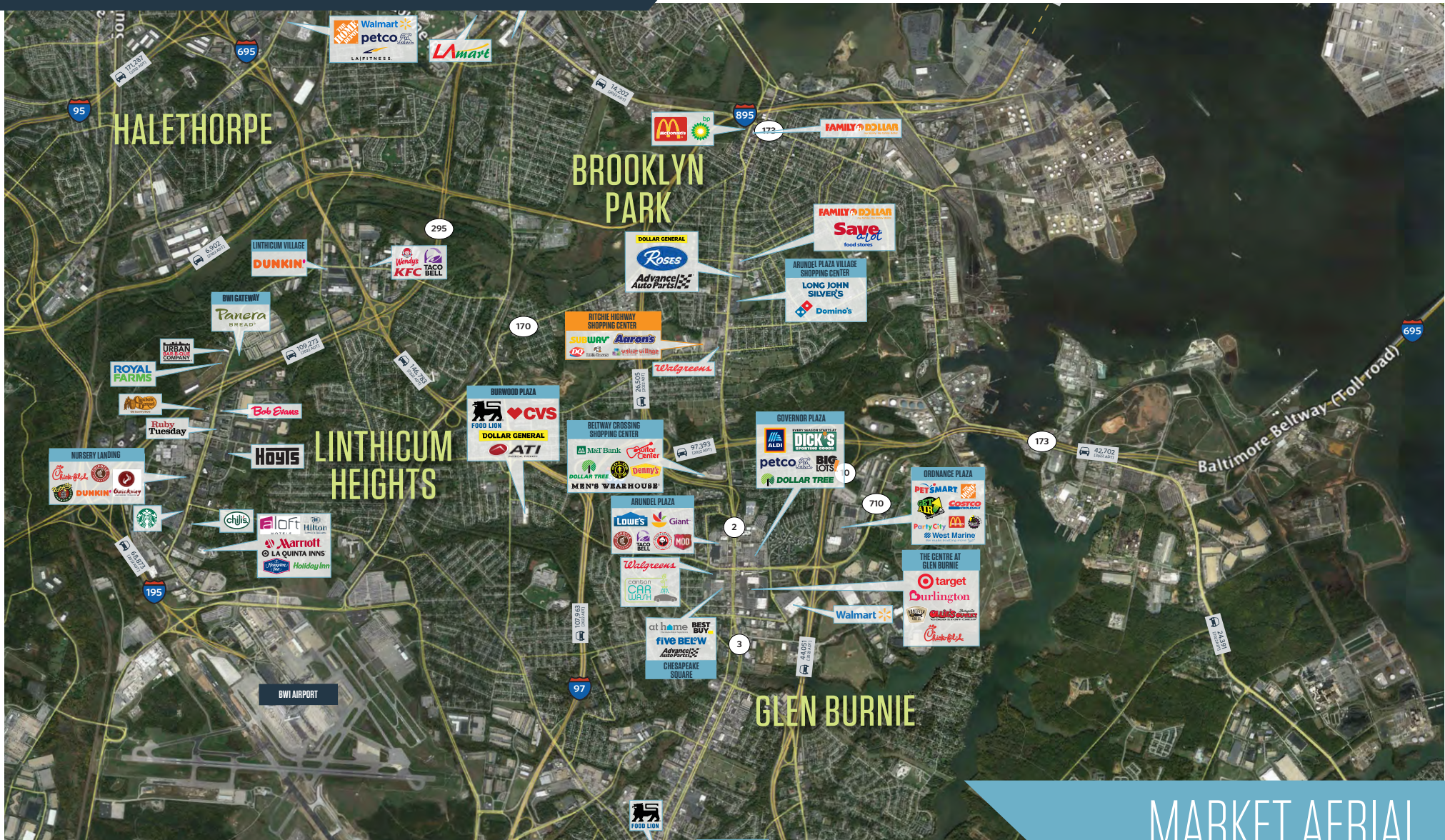
John Meyer
jmeyer@klnb.com
443-632-2052

100 West Road, Suite 505
Towson, MD 21204
klnb.com



RITCHIE HIGHWAY SHOPPING CENTER

5700 Ritchie Highway, Brooklyn Park, MD 21225
Anne Arundel County



MARKET AERIAL

Michael Ginsburg
mginsburg@klnb.com
443-632-2041

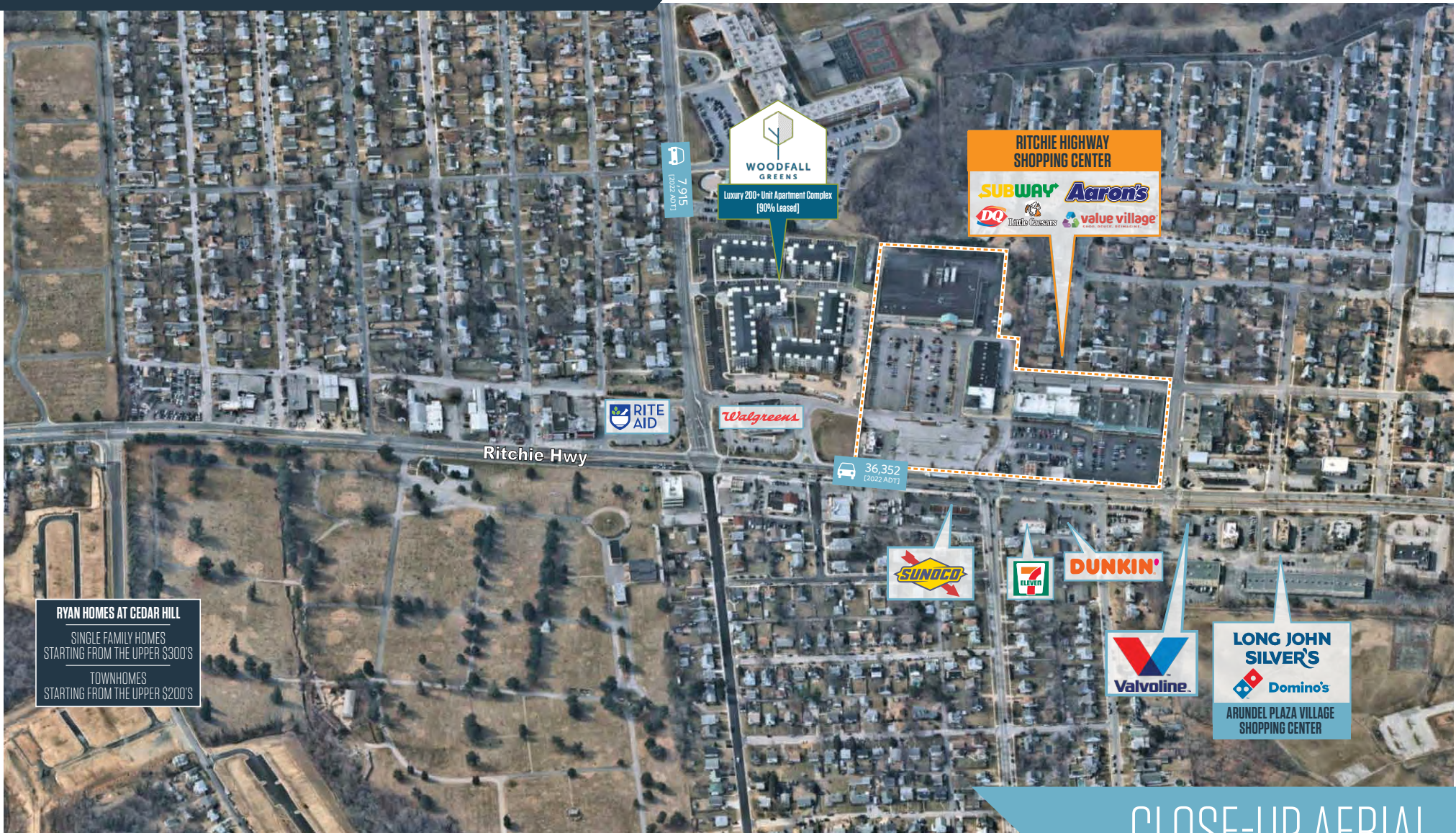
John Meyer
jmeyer@klnb.com
443-632-2052

100 West Road, Suite 505
Towson, MD 21204
klnb.com

klnb

RITCHIE HIGHWAY SHOPPING CENTER

5700 Ritchie Highway, Brooklyn Park, MD 21225
Anne Arundel County



CLOSE-UP AERIAL

Michael Ginsburg
mginsburg@klnb.com
443-632-2041

John Meyer
jmeyer@klnb.com
443-632-2052

100 West Road, Suite 505
Towson, MD 21204
klnb.com

klnb

RITCHIE HIGHWAY SHOPPING CENTER

5700 Ritchie Highway, Brooklyn Park, MD 21225
Anne Arundel County



SITE PLAN

Michael Ginsburg
mginsburg@klnb.com
443-632-2041

John Meyer
jmeyer@klnb.com
443-632-2052

100 West Road, Suite 505
Towson, MD 21204
klnb.com



RITCHIE HIGHWAY SHOPPING CENTER

5700 Ritchie Highway, Brooklyn Park, MD 21225
Anne Arundel County

[CLICK TO VIEW PROPERTY WEBSITE](#)

For More Information, Please Contact:

Michael Ginsburg

mginsburg@klnb.com
443-632-2041

John Meyer

jmeyer@klnb.com
443-632-2052

100 West Road, Suite 505
Towson, MD 21204

klnb.com



facebook.com/KLNBCRE



[@KLNBCRE](https://twitter.com/KLNBCRE)



linkedin.com/company/klnb



instagram.com/klnbcre

While we have no reason to doubt the accuracy of any of the information supplied, we cannot, and do not, guarantee its accuracy. All information should be independently verified prior to a purchase or lease of the property. We are not responsible for errors, omissions, misuse, or misinterpretation of information contained herein and make no warranty of any kind, express or implied, with respect to the property or any other matters.

klnb