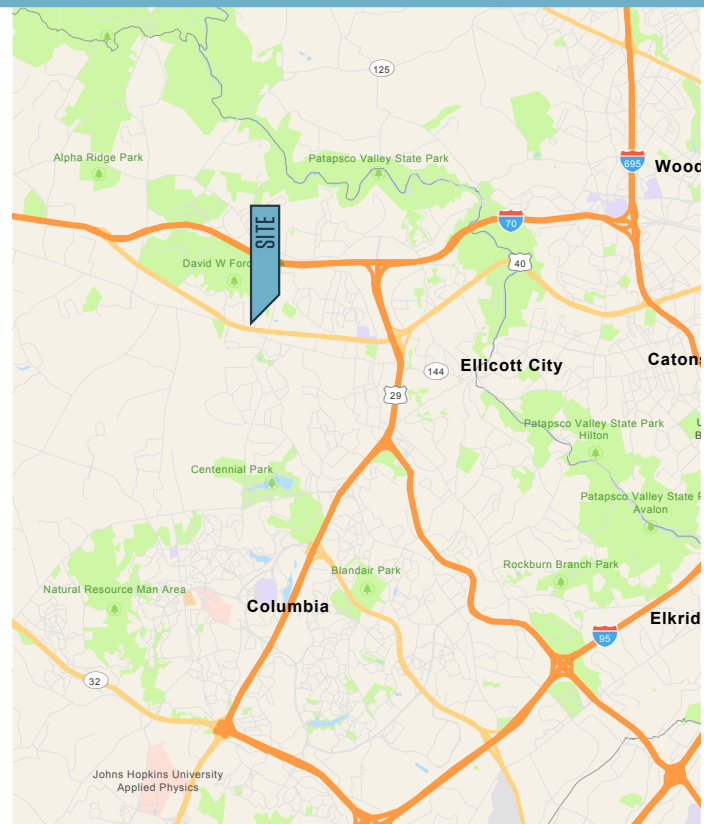




CONDO FOR SALE

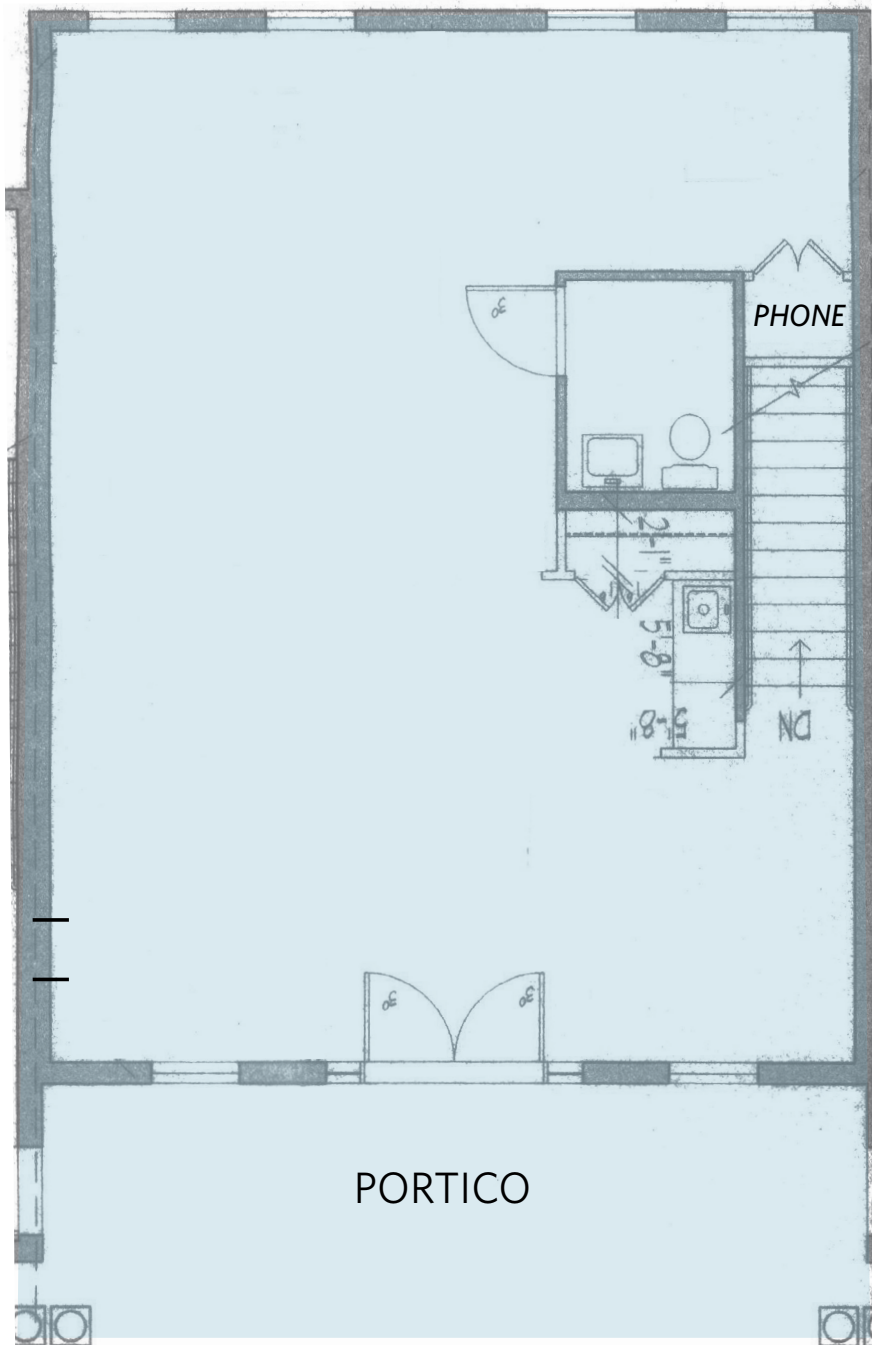
PROPERTY HIGHLIGHTS:

- **10264 Baltimore National Pike**
 - 1,938 square feet available
- Condo Fee: \$459 per month; Condo Fee covers the maintenance and repair of the common areas; a reserve for major repairs; legal and administrative fees, taxes, etc.
- Public water and sewer
- Construction: Wood frame and brick facade
- Zoning: Howard County, B1
- Parking: 9 free surface unreserved spaces
- Year Built: 1988
- Utilities: Separately metered
- Verizon & Comcast available
- Sale Price: \$435,000
- **Ideal for medical / dental office**



10264 BALTIMORE NATIONAL PIKE
Ellicott City, MD 21042 | Howard County

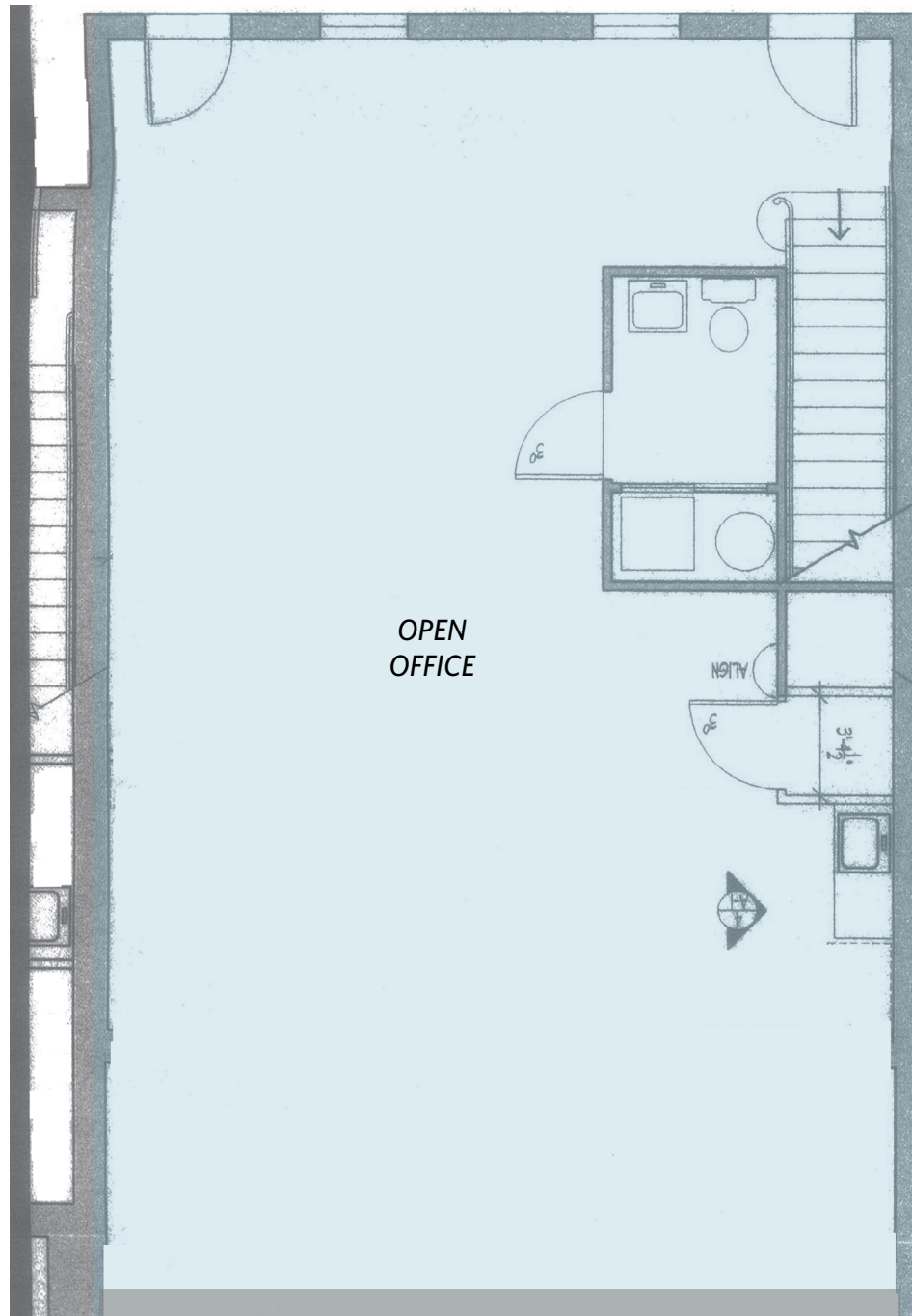
UPPER FLOOR PLAN



Abby Glassberg
aglassberg@klnb.com
443-574-1433

David J. Fritz, CCIM, SIOR
dfritz@klnb.com
443-574-1410

LOWER FLOOR PLAN

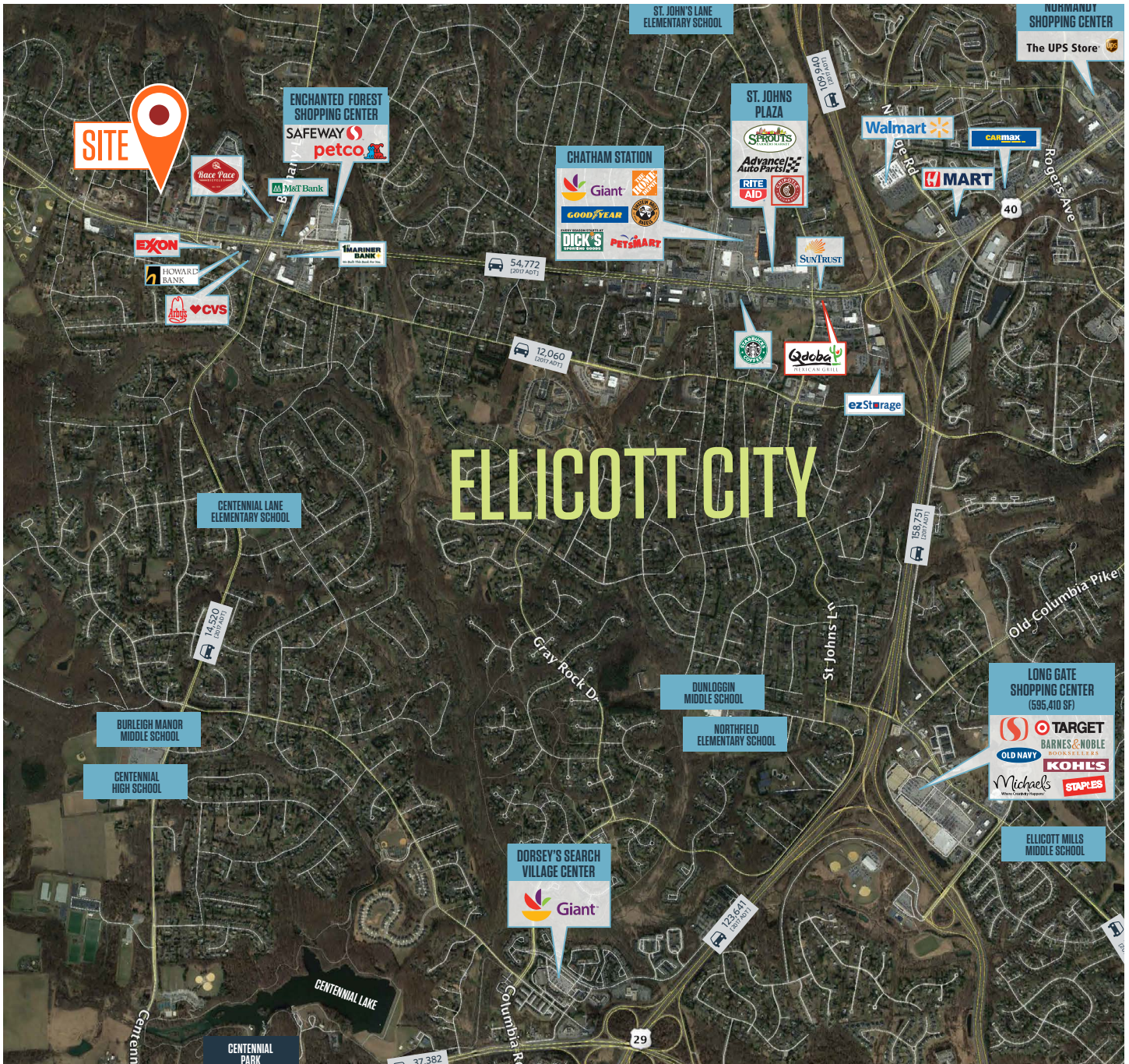


10264 BALTIMORE NATIONAL PIKE

Ellicott City, MD 21042 | Howard County



AERIAL



While we have no reason to doubt the accuracy of any of the information supplied, we cannot, and do not, guarantee its accuracy. All information should be independently verified prior to a purchase or lease of the property. We are not responsible for errors, omissions, misuse, or misinterpretation of information contained herein and make no warranty of any kind, express or implied, with respect to the property or any other matters.

Abby Glassberg
aglassberg@klnb.com
443-574-1433

David J. Fritz, CCIM, SIOR
dfritz@klnb.com
443-574-1410

9881 Broken Land Parkway, Suite 300
Columbia, MD 21046
klnb.com