



STAVERTON EAST

21480 Pacific Boulevard, Sterling, VA 20166



AVAILABILITY:

Suite 100

- 4,232 RSF
- Combination open plan and office with conference & kitchenette
- Direct lobby access
- Immediate occupancy

HIGHLIGHTS:

- Great location with easy access to Route 7, Route 28 & the Dulles Toll Road
- Ample parking
- Centrally located amongst expansive amenity base including Dulles Town Center, Dulles Landing, One Loudoun & Dulles 28 Centre
- Potential building signage

OFFICE FOR LEASE

MARC TASKER, CCIM, SIOR
mtasker@klnb.com
703-268-2735

JACK REGLER
jregler@klnb.com
703-268-2740

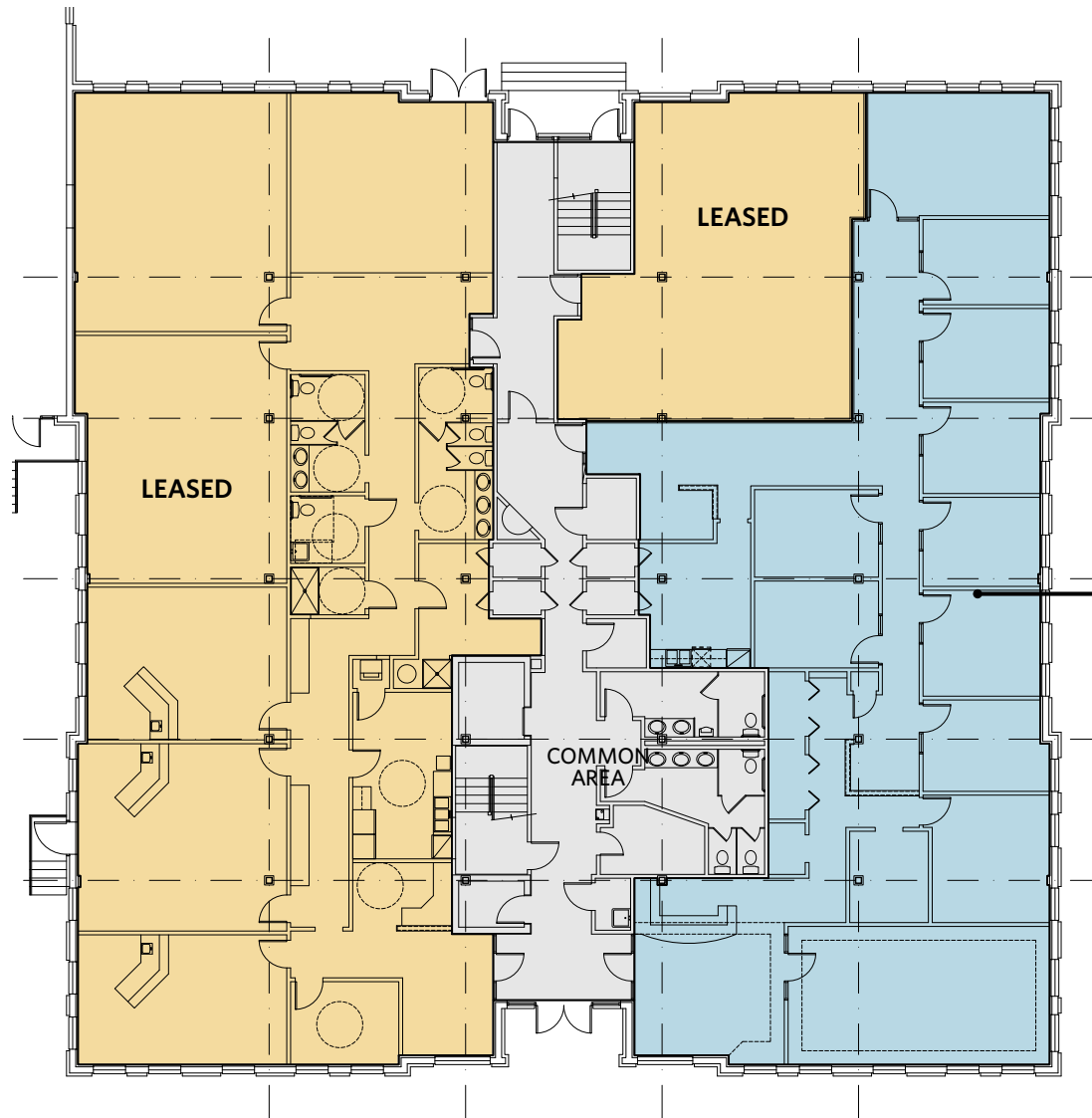
OWNED & MANAGED BY



SARANTIS PROPERTIES

Real Estate Development and Management

klnb.com



SUITE 100
4,232 SF

FIRST FLOOR PLAN

STAVERTON EAST

MARC TASKER, CCIM, SIOR
mtasker@klnb.com
703-268-2735

JACK REGLER
jregler@klnb.com
703-268-2740





STAVERTON EAST

MARC TASKER, CCIM, SIOR
 mtasker@klnb.com
 703-268-2735

JACK REGLER
 jregler@klnb.com
 703-268-2740





STAVERTON EAST

21480 Pacific Boulevard, Sterling, VA 20166

CONTACT

MARC TASKER, CCIM, SIOR
mtasker@klInb.com
703-268-2735

JACK REGLER
jregler@klInb.com
703-268-2740

8065 Leesburg Pike, Suite 700
Tysons, VA 22182

klInb.com

VISIT PROPERTY WEBSITE



While we have no reason to doubt the accuracy of any of the information supplied, we cannot, and do not, guarantee its accuracy. All information should be independently verified prior to a purchase or lease of the property. We are not responsible for errors, omissions, misuse, or misinterpretation of information contained herein and make no warranty of any kind, express or implied, with respect to the property or any other matters.