



FOR SUBLEASE

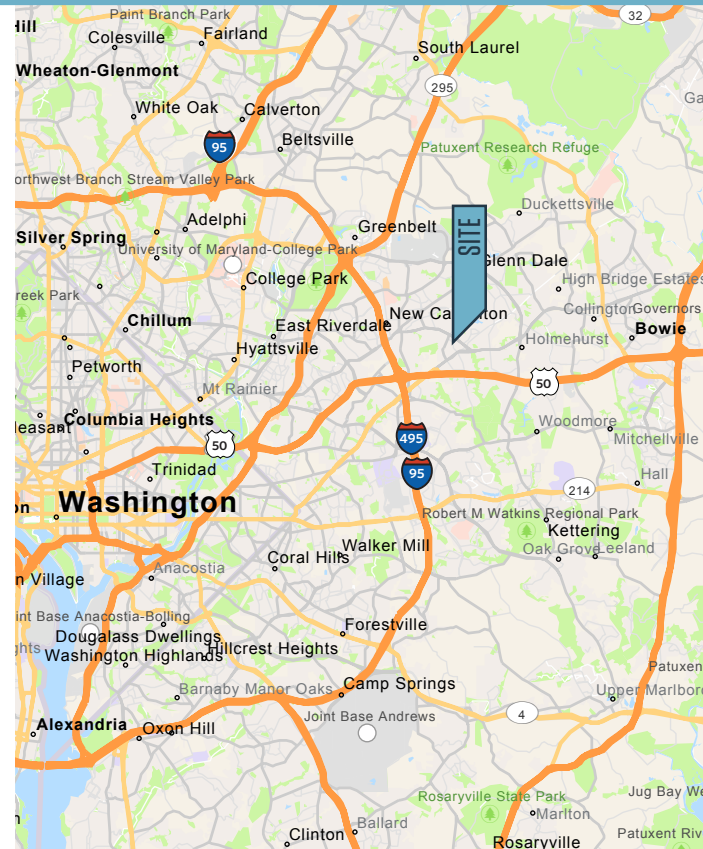
AVAILABLE:

- **Suite 310:** 3,571 square feet

PROPERTY HIGHLIGHTS:

- Well maintained, three-story office building
- Cubes are included; other furniture negotiable
- **Lease Rate:** \$18.50 PSF, Full Service
- **Building Size:** 59,458 square feet
- **Parking:** Ample free surface parking

NEARBY AMENITIES:



Abby Glassberg
aglassberg@klnb.com
443-574-1433

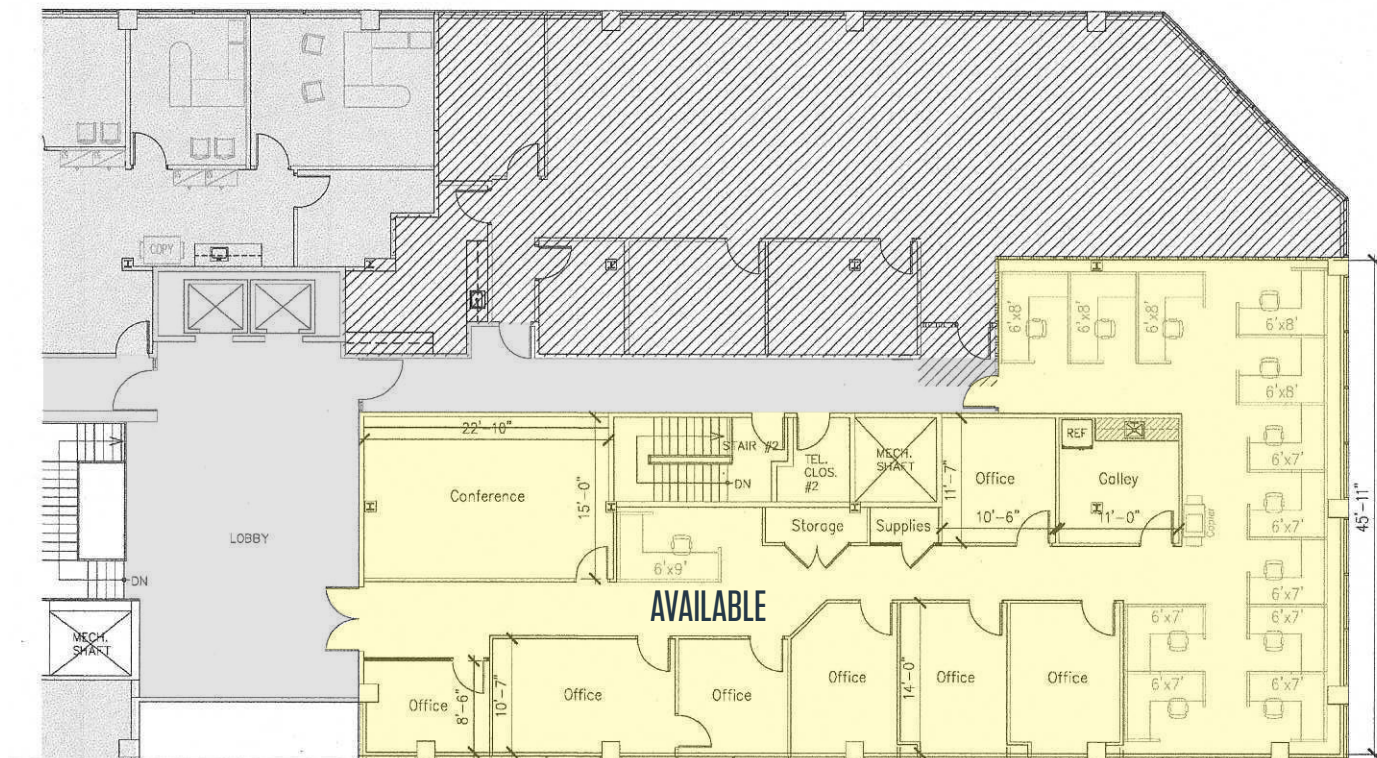
Aaron Carroll
acarroll@klnb.com
443-722-9899

9881 Broken Land Parkway, Suite 300
Columbia, MD 21046
klnb.com

4601 PRESIDENTS DRIVE

Lanham, MD 20706 | Prince George's County

FLOOR PLAN | SUITE 310 | 3,571 SF



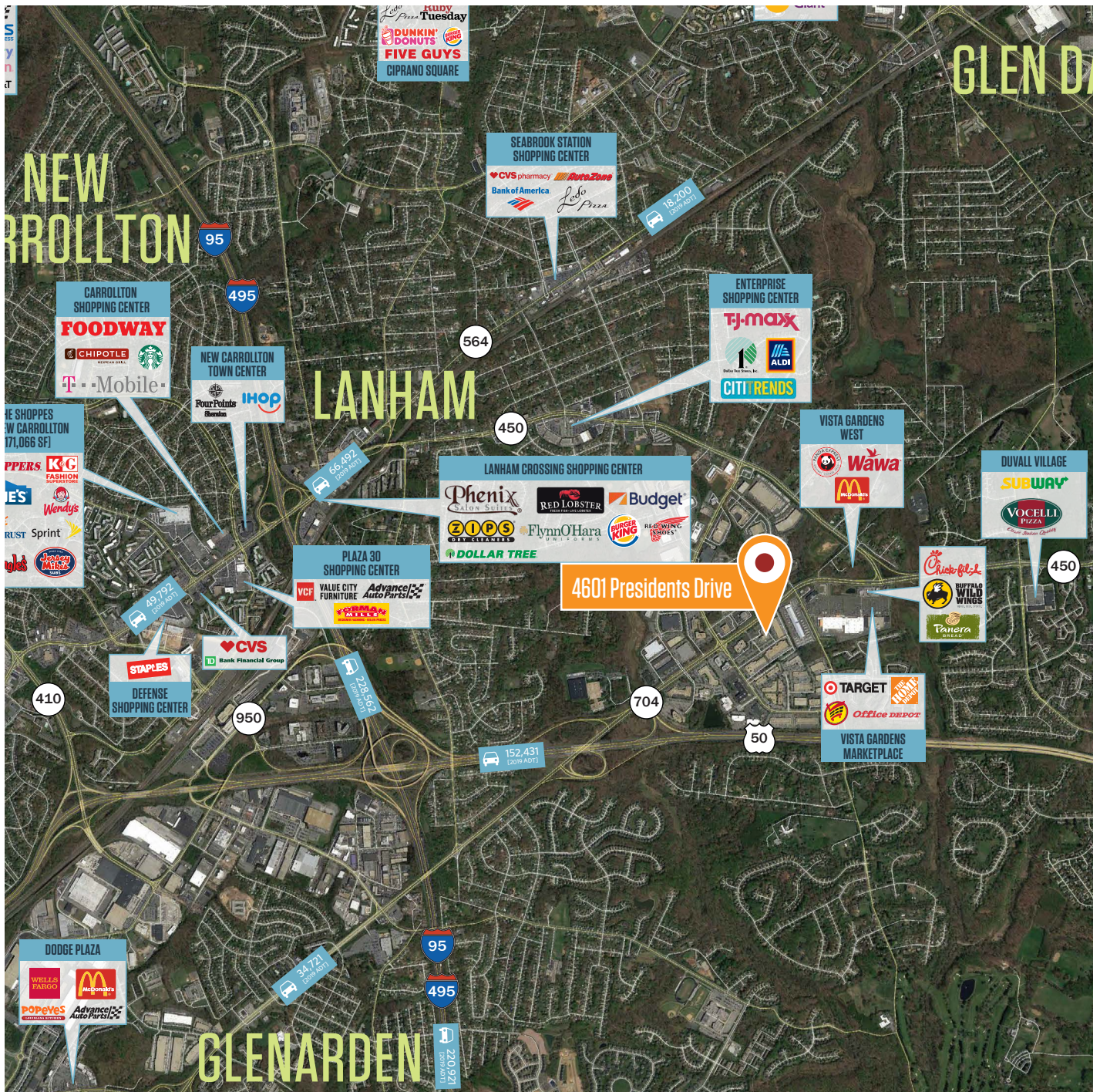
PHOTOS



Abby Glassberg
aglassberg@klnb.com
443-574-1433

Aaron Carroll
acarroll@klnb.com
443-722-9899

MARKET AERIAL



4601 PRESIDENTS DRIVE

Lanham, MD 20706 | Prince George's County

[CLICK TO VIEW PROPERTY WEBSITE](#)

For More Information, Please Contact:

Abby Glassberg

aglassberg@klnb.com

443-574-1433

Aaron Carroll

acarroll@klnb.com

443-722-9899

9881 Broken Land Parkway, Suite 300
Columbia, MD 21046

klnb.com

 facebook.com/KLNB

 [@KLNBLLC](https://twitter.com/KLNBLLC)

 linkedin.com/company/klnb

 instagram.com/klnblc

While we have no reason to doubt the accuracy of any of the information supplied, we cannot, and do not, guarantee its accuracy. All information should be independently verified prior to a purchase or lease of the property. We are not responsible for errors, omissions, misuse, or misinterpretation of information contained herein and make no warranty of any kind, express or implied, with respect to the property or any other matters.