

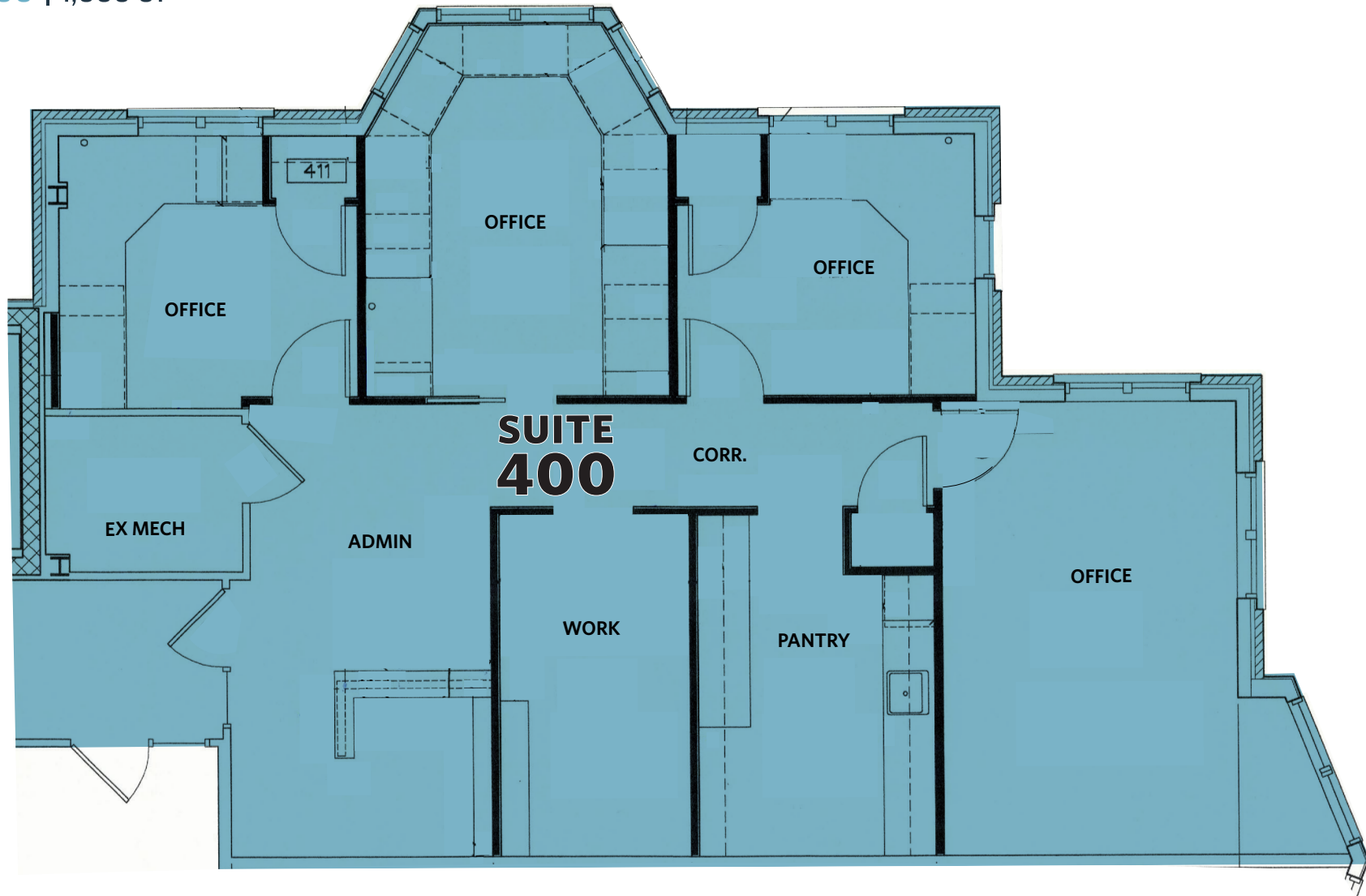
PROPERTY HIGHLIGHTS:

- Efficient Office Condo located within an active five building medical/professional services park
- Suite 400 - 1,555 SF
- Conveniently located near the intersection of Route 7 and Cascades Parkway
- Surrounded by amenities including dining, shopping, and banking
- Adjoining walking path next to lake
- Ample parking
- Immediate occupancy
- Sale: \$357,650 (\$230 PSF)
- Lease: \$20.00 net of utilities



OFFICE FOR SALE/LEASE

SUITE 400 | 1,555 SF



FLOOR PLAN

46175 WESTLAKE DRIVE

MARC TASKER, CCIM, SIOR
mtasker@klnb.com
703-268-2735

PETER ILARDO
pilaro@klnb.com
703-268-7050





PHOTOS

46175 WESTLAKE DRIVE

MARC TASKER, CCIM, SIOR
mtasker@klnb.com
703-268-2735

PETER ILARDO
pilardo@klnb.com
703-268-7050

NAklnb



MARKET AERIAL

46175 WESTLAKE DRIVE

MARC TASKER, CCIM, SIOR
 mtasker@klnb.com
 703-268-2735

PETER ILARDO
 pilardo@klnb.com
 703-268-7050





46175 WESTLAKE DRIVE
Potomac Falls, VA 20165

CONTACT

MARC TASKER, CCIM, SIOR
mtasker@klnb.com
703-268-2735

PETER ILARDO
pilardo@klnb.com
703-268-7050

8065 Leesburg Pike, Suite 700
Tysons, VA 22182

klnb.com

VISIT PROPERTY WEBSITE



While we have no reason to doubt the accuracy of any of the information supplied, we cannot, and do not, guarantee its accuracy. All information should be independently verified prior to a purchase or lease of the property. We are not responsible for errors, omissions, misuse, or misinterpretation of information contained herein and make no warranty of any kind, express or implied, with respect to the property or any other matters.