

# 8605 CENTRAL AVENUE

8605 Central Avenue, Capitol Heights, MD 20743  
Prince George's County



## STORAGE LOT FOR LEASE

### PROPERTY HIGHLIGHTS

- **8605 Central Avenue:** 3.11 acres (approx. 2.5 usable and partially fenced/paved at this time)
- Over 400' of frontage on highly-traveled Central Avenue (53,460 ADT)
- Less than a ½ mile from I-495 interchange and new Hampton Park redevelopment (500,000 SF mixed-use for Phase I)
- I-E Zoning allows for wide range of uses (industrial, food, auto sales, storage, etc.)

Spence Daw  
sdaw@klnb.com  
443-574-1429

Zubin David  
zdavid@klnb.com  
443-574-1446

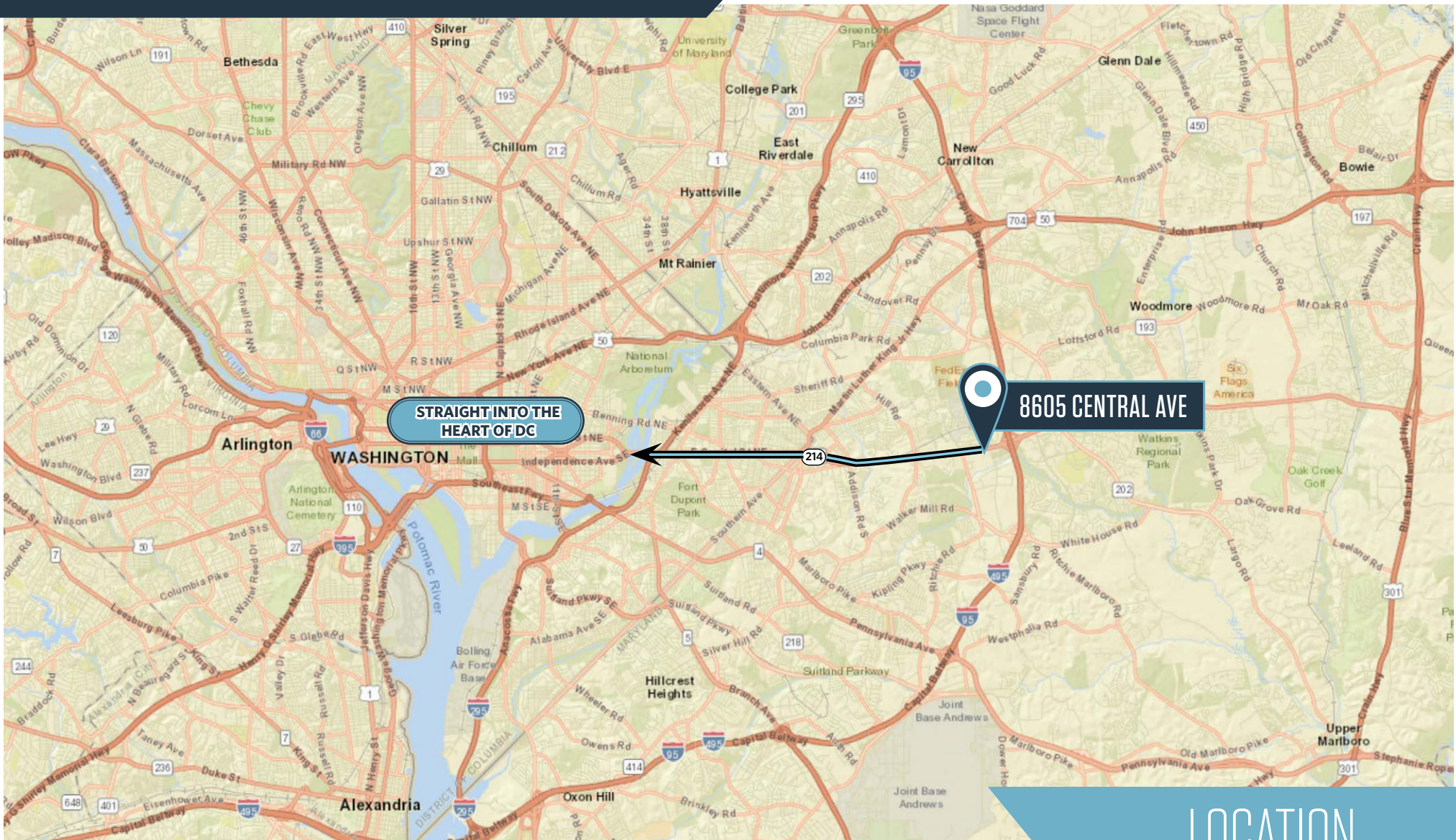
9881 Broken Land Parkway, #300  
Columbia, MD 21046  
klnb.com





# 8605 CENTRAL AVENUE

8605 Central Avenue, Capitol Heights, MD 20743  
Prince George's County



LOCATION

Spence Daw  
sdaw@klnb.com  
443-574-1429

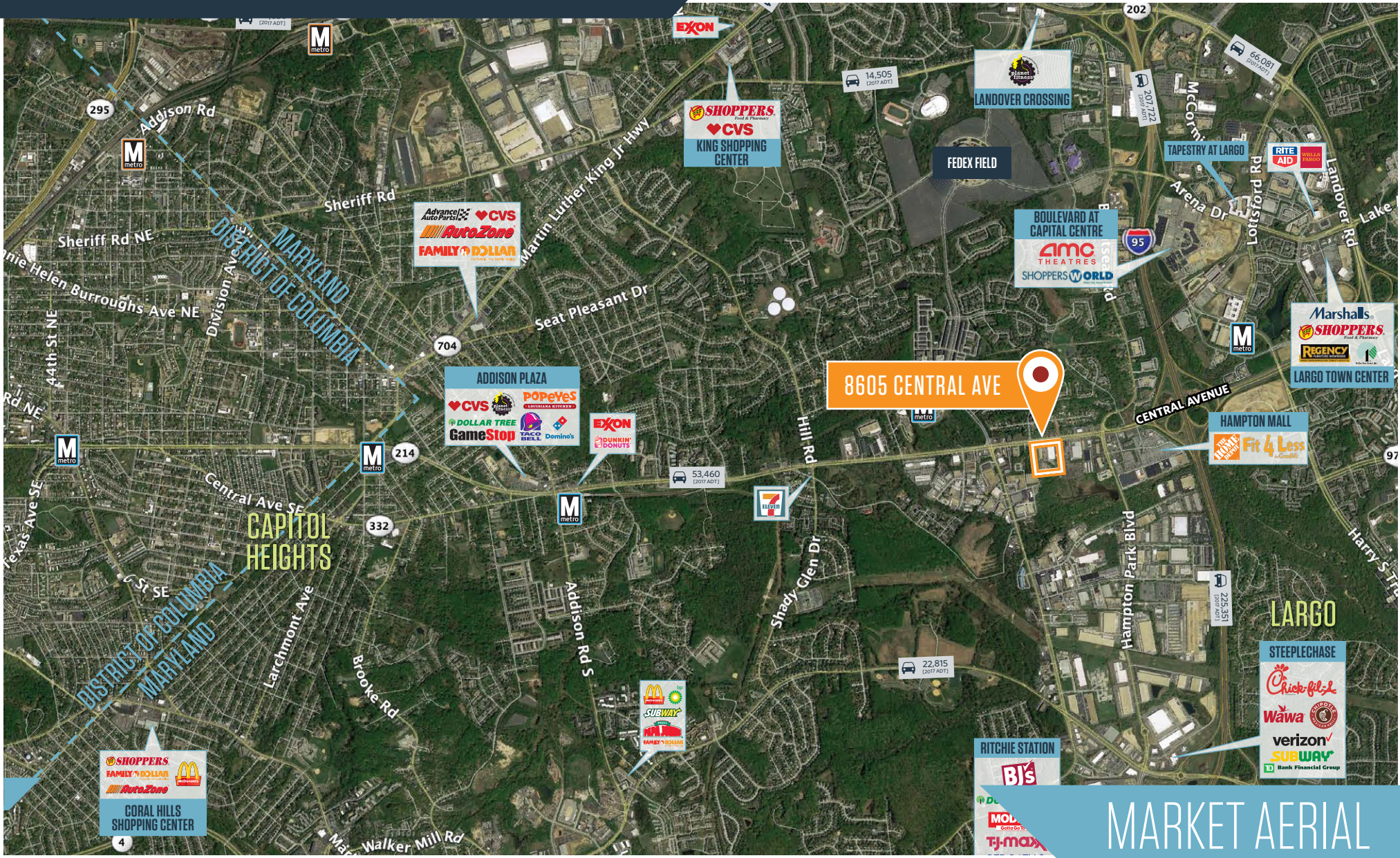
Zubin David  
zdavid@klnb.com  
443-574-1446

9881 Broken Land Parkway, #300  
Columbia, MD 21046  
klnb.com



# 8605 CENTRAL AVENUE

8605 Central Avenue, Capitol Heights, MD 20743  
Prince George's County



MARKET AERIAL

Spence Daw  
sdaw@klnb.com  
443-574-1429

Zubin David  
zdavid@klnb.com  
443-574-1446

9881 Broken Land Parkway, #300  
Columbia, MD 21046  
klnb.com

**NAI**klnb

# 8605 CENTRAL AVENUE

8605 Central Avenue, Capitol Heights, MD 20743  
Prince George's County

[CLICK TO VIEW PROPERTY WEBSITE](#)

For More Information, Please Contact:

**Spence Daw**

sdaw@klnb.com

443-574-1429

**Zubin David**

z david@klnb.com

443-574-1446

9881 Broken Land Parkway, Suite 300  
Columbia, MD 21046

[klnb.com](http://klnb.com)

 [facebook.com/KLNB](https://facebook.com/KLNB)

 [@KLNBLLC](https://twitter.com/KLNBLLC)

 [linkedin.com/company/klnb](https://linkedin.com/company/klnb)

 [instagram.com/klnbllc](https://instagram.com/klnbllc)

While we have no reason to doubt the accuracy of any of the information supplied, we cannot, and do not, guarantee its accuracy. All information should be independently verified prior to a purchase or lease of the property. We are not responsible for errors, omissions, misuse, or misinterpretation of information contained herein and make no warranty of any kind, express or implied, with respect to the property or any other matters.

**NAI** klnb