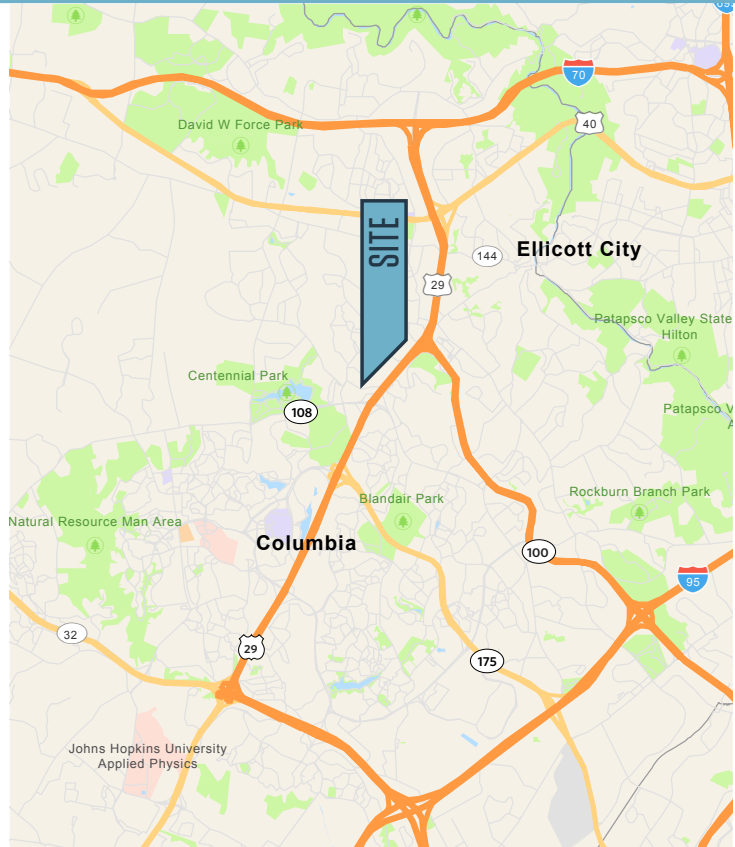




## PROPERTY HIGHLIGHTS:

- **Suite 202:** 1,068 square feet available; 2<sup>nd</sup> floor unit
- **Asking Price:** \$229 psf or \$245,000
- **Condo Fees:** \$235 per month
- **Property Tax For 2022/23:** \$3,301.71 annually
- **Columbia Assoc Fees For 2022/23:** \$767.04 annually
- End unit with windows on three sides facing open space

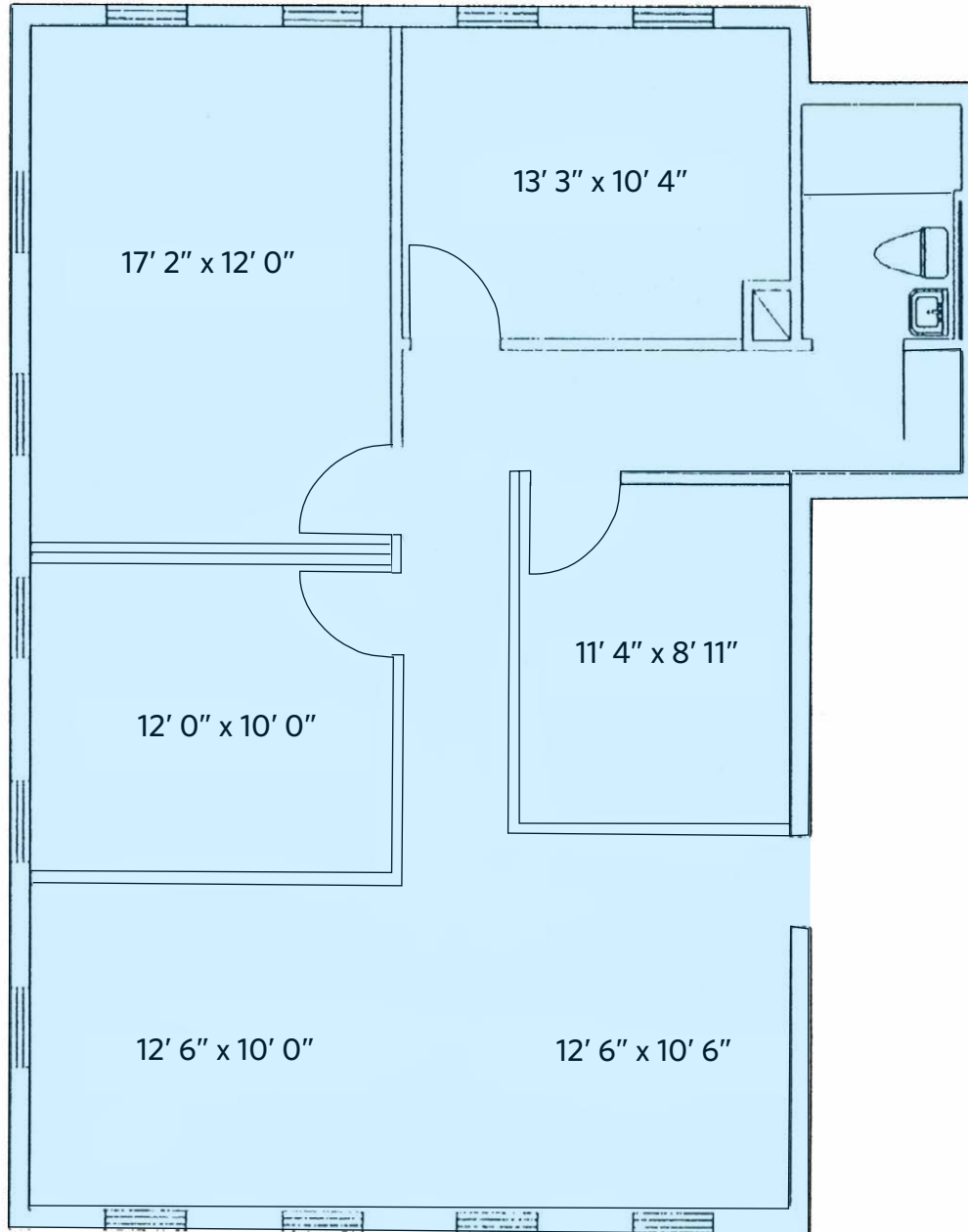
## NEARBY AMENITIES:



# 5016 DORSEY HALL DRIVE

Suite 202, Ellicott City, MD 21042 | Howard County

## FLOOR PLAN | SUITE 202 | 1,068 SQUARE FEET



Approximate Dimensions

**Austin Eber**  
aeber@klnb.com  
443-574-1414

**Chuck Breitenother**  
cbreitenother@klnb.com  
443-574-1422



## PHOTOS





# 5016 DORSEY HALL DRIVE

Suite 202, Ellicott City, MD 21042 | Howard County



## AERIAL VIEW



Austin Eber  
aeber@klnb.com  
443-574-1414

Chuck Breitenother  
cbreitenother@klnb.com  
443-574-1422

9881 Broken Land Pkwy, Suite 300  
Columbia, MD 21046  
klnb.com