

3856 DULLES SOUTH COURT

3856 Dulles South Court, Chantilly, Virginia 20151
Fairfax County



FLEX/WAREHOUSE FOR LEASE

AVAILABILITY:

Suites L & M: 11,960 SF

- Rate: Negotiable
- Fully conditioned warehouse
- 3 loading dock doors
- Available 2/1/2023

PROPERTY FEATURES:

- 18' clear warehouse
- I-5 zoning, Fairfax County
- Prominent signage on Route 50 (51,000 ADT)
- Abundant parking
- Extensive window line
- Numerous hotels, restaurants, and retail amenities nearby

Ryan Moody
rmoody@klnb.com
703-268-2739

Keenan Woofter
kwoofter@klnb.com
703-268-2744

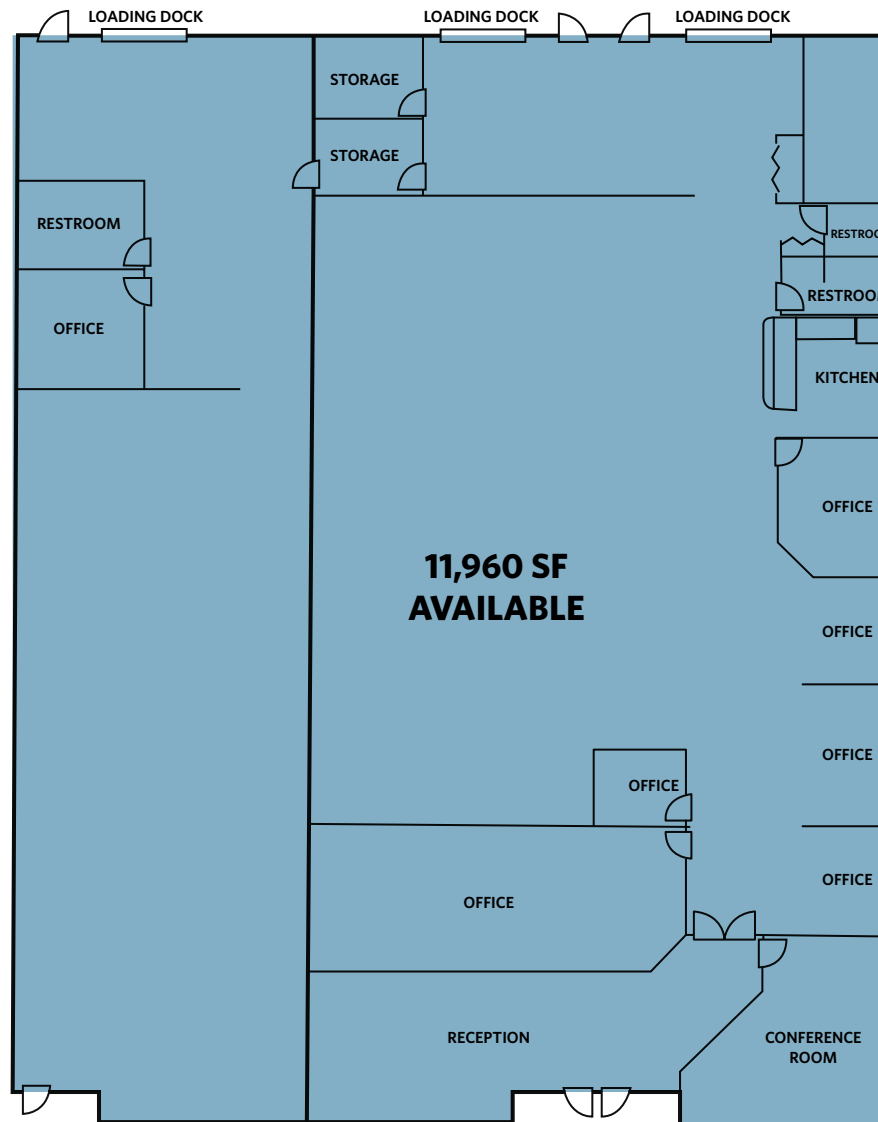
8065 Leesburg Pike, Suite 700
Tysons, VA 22182
klnb.com

NAI klnb

3856 DULLES SOUTH COURT

3856 Dulles South Court, Chantilly, Virginia 20151
Fairfax County

AVAILABLE | 11,960 SF



FLOOR PLAN

Ryan Moody
rmoody@klnb.com
703-268-2739

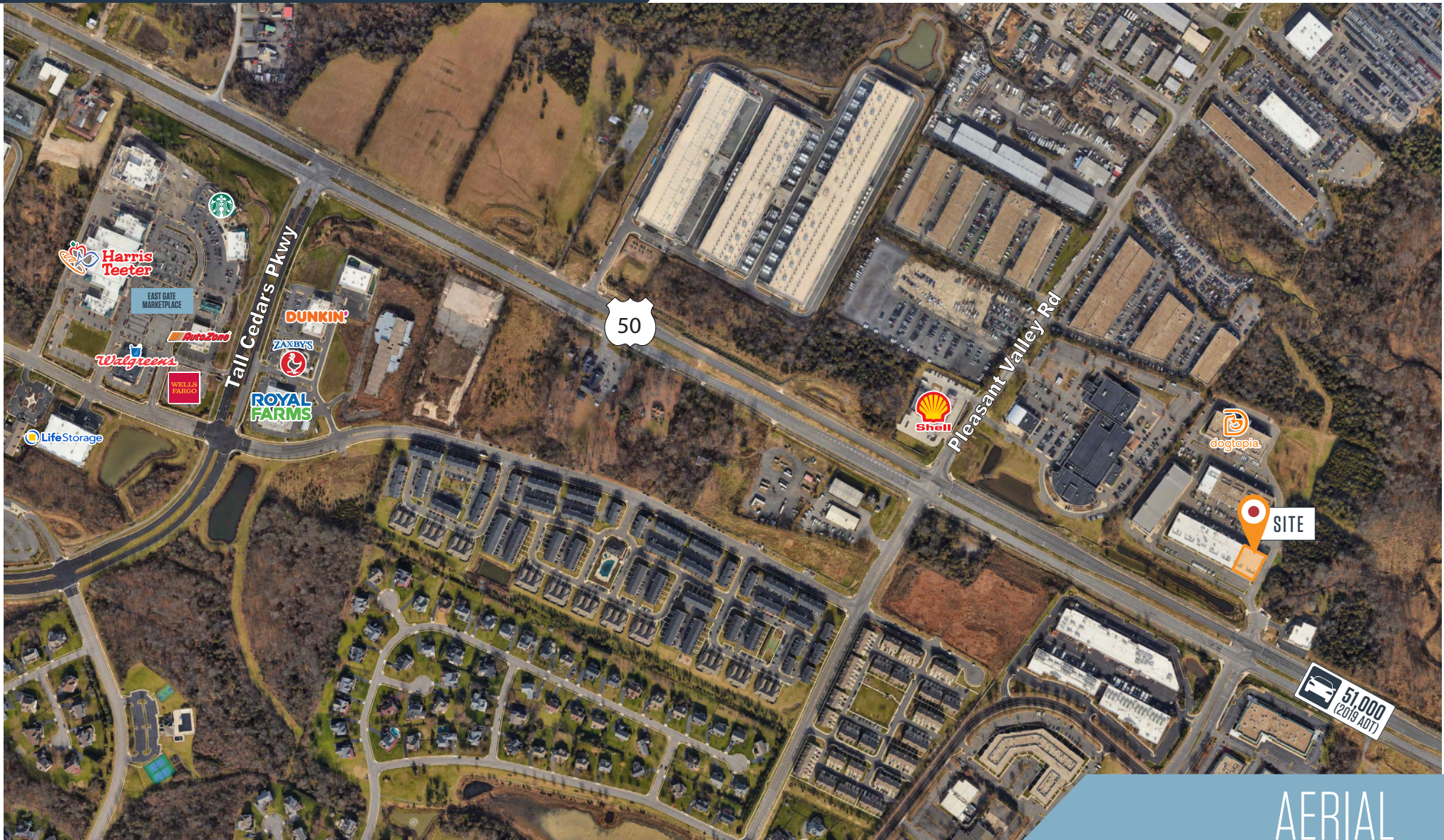
Keenan Woofter
kwoofter@klnb.com
703-268-2744

8065 Leesburg Pike, Suite 700
Tysons, VA 22182
klnb.com



3856 DULLES SOUTH COURT

3856 Dulles South Court, Chantilly, Virginia 20151
Fairfax County



AERIAL

Ryan Moody
rmoody@klnb.com
703-268-2739

Keenan Woofter
kwoofter@klnb.com
703-268-2744

8065 Leesburg Pike, Suite 700
Tysons, VA 22182
klnb.com



3856 DULLES SOUTH COURT

3856 Dulles South Court, Chantilly, Virginia 20151
Fairfax County

CLICK TO VIEW PROPERTY WEBSITE

For More Information, Please Contact:

Ryan Moody

rmood@klNb.com
703-268-2739

Keenan Woofter

kwoofter@klNb.com
703-268-2744

8065 Leesburg Pike, Suite 700
Tysons, VA 22182

klNb.com

 facebook.com/KLNB

 [@KLNBLLC](https://twitter.com/KLNBLLC)

 linkedin.com/company/klNb

 instagram.com/klNbllc

While we have no reason to doubt the accuracy of any of the information supplied, we cannot, and do not, guarantee its accuracy. All information should be independently verified prior to a purchase or lease of the property. We are not responsible for errors, omissions, misuse, or misinterpretation of information contained herein and make no warranty of any kind, express or implied, with respect to the property or any other matters.

NAIklNb