



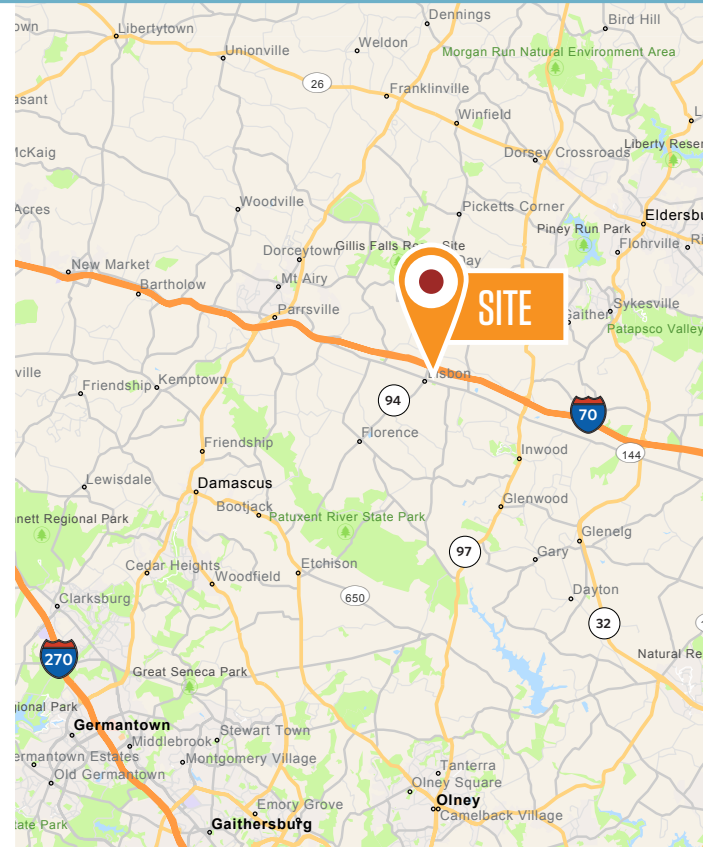
FOR SALE

AVAILABLE FOR SALE:

- 3,000 square feet on two levels

PROPERTY HIGHLIGHTS:

- Easy access to I-70, Routes 94, 97 and 32
- 1,500 square feet per level
- Zoned B1
- .5 acres of land
- Well and septic
- Approximately 16 parking spaces
- Adjacent to the Lisbon Post Office



15925 NORTH AVENUE

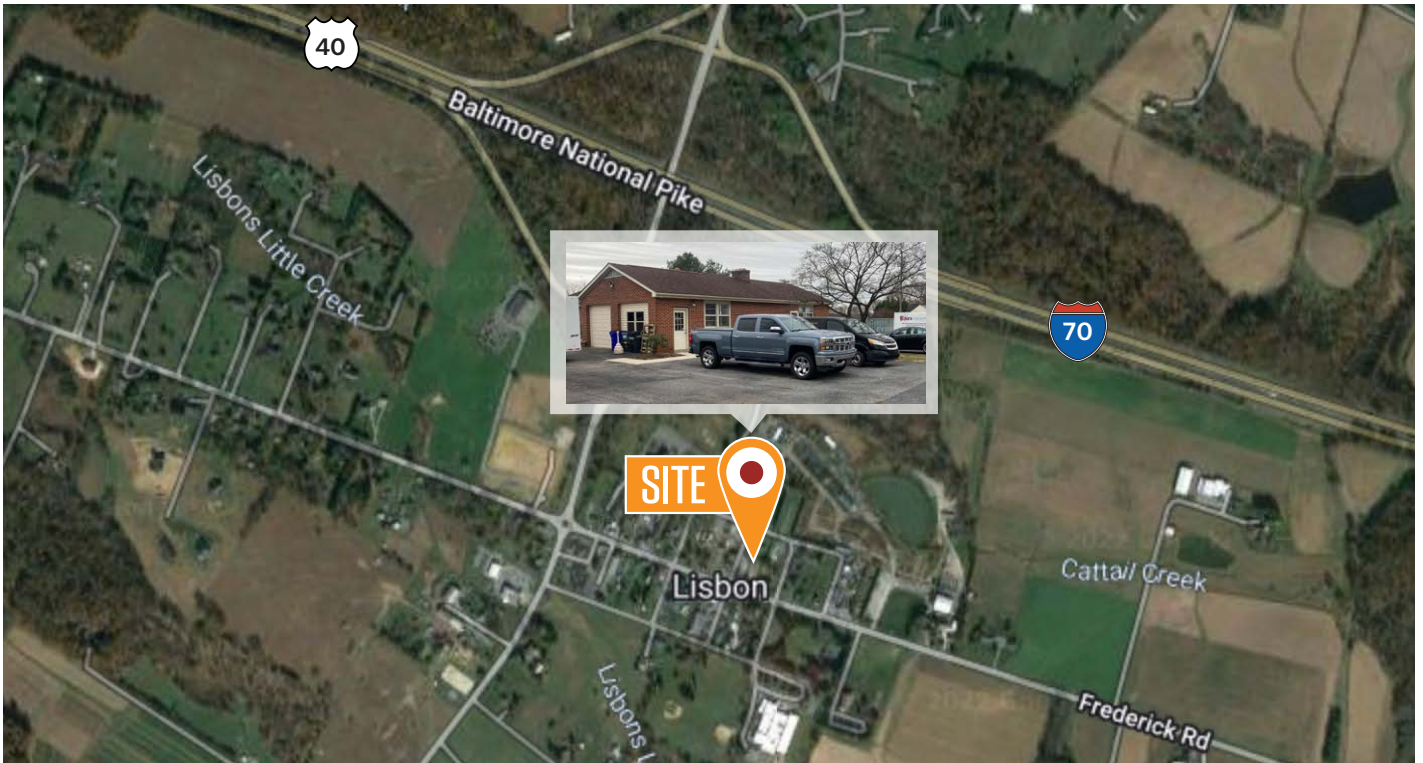
Woodbine, MD 21797 | Howard County

PHOTOS

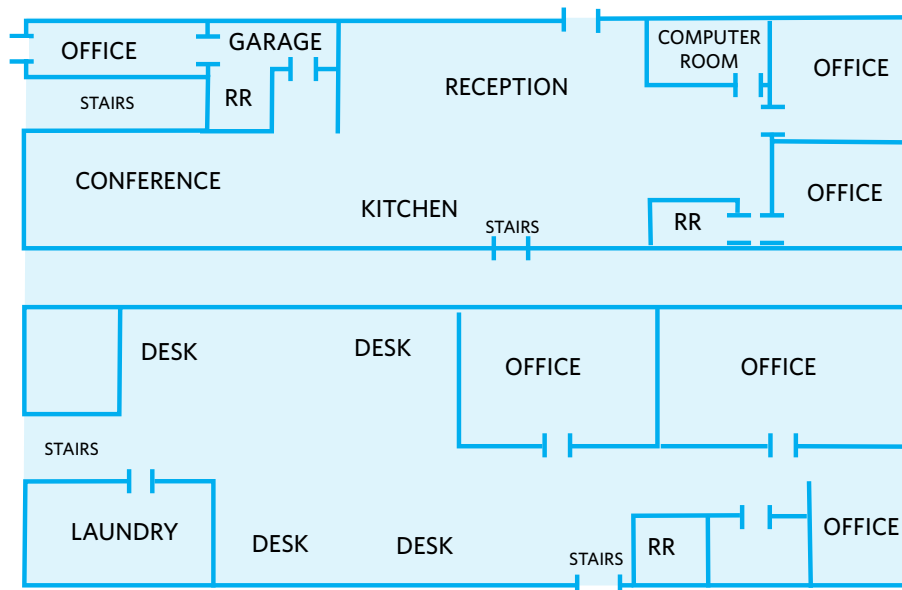


Abby Glassberg
aglassberg@klnb.com
443-574-1433

AERIAL VIEW



FLOOR PLAN



15925 NORTH AVENUE

Woodbine, MD 21197 | Howard County

[CLICK TO VIEW PROPERTY WEBSITE](#)

For More Information, Please Contact:

Abby Glassberg

aglassberg@klnb.com

443-574-1433

9881 Broken Land Parkway, Suite 300
Columbia, MD 21046

klnb.com

 facebook.com/KLNB

 [@KLNBLLC](https://twitter.com/KLNBLLC)

 linkedin.com/company/klnb

 instagram.com/klnbllc

While we have no reason to doubt the accuracy of any of the information supplied, we cannot, and do not, guarantee its accuracy. All information should be independently verified prior to a purchase or lease of the property. We are not responsible for errors, omissions, misuse, or misinterpretation of information contained herein and make no warranty of any kind, express or implied, with respect to the property or any other matters.