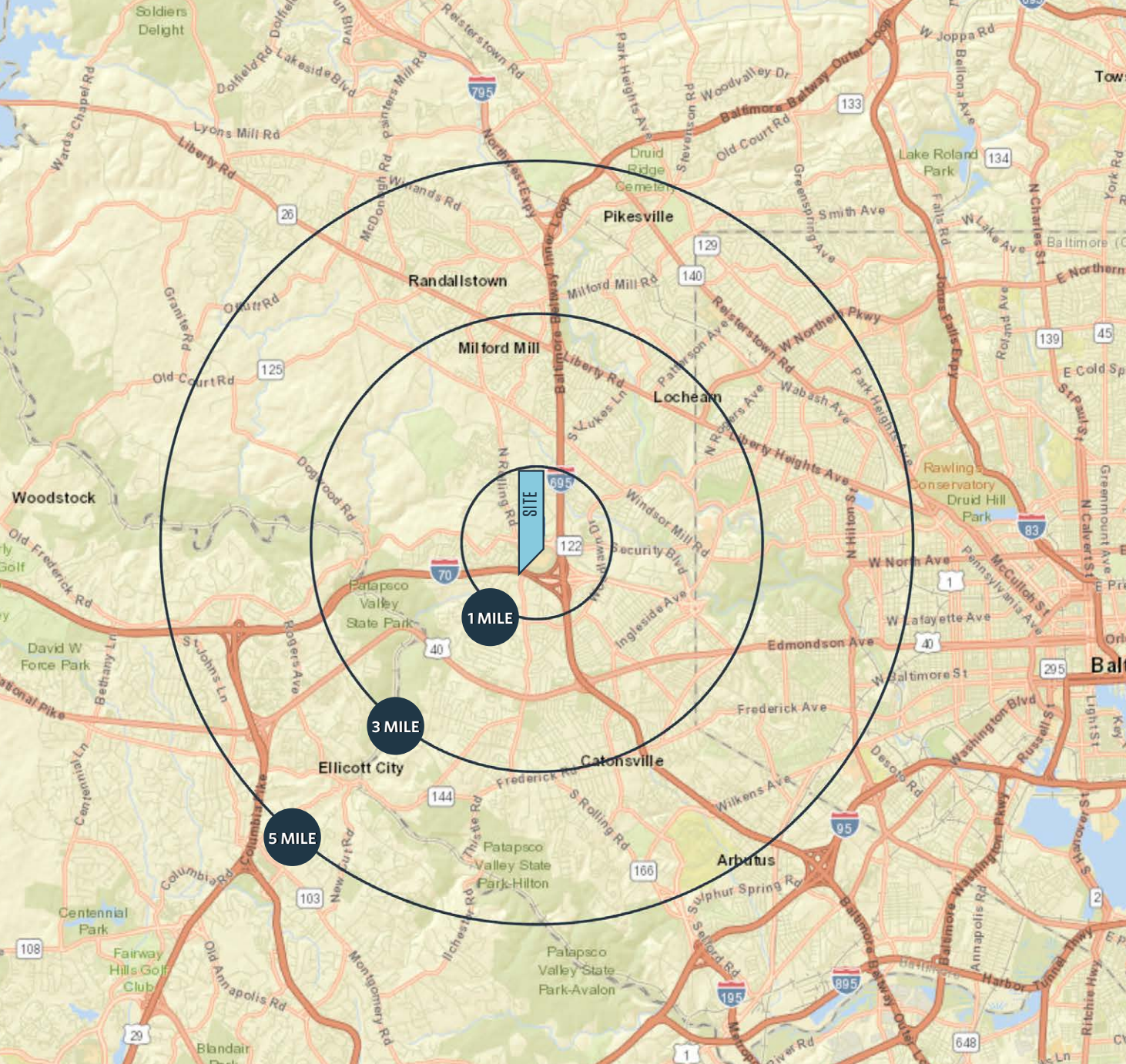




RETAIL FOR LEASE



PROPERTY HIGHLIGHTS

RETAIL PADS FOR LEASE:

AVAILABLE SPACE:

- Pad 1 - 3.36 acres (BM-CT-Zoning)
- Pad 2 - 1.5 acres [4,992 SF] (BM-CT Zoning)
- Pad 3 - 1.27 acres (BM-CT Zoning)

DEMOGRAPHICS

1 mile	3 miles	5 miles
10,931	109,768	315,9531
POPULATION		
18,236	104,024	295,597
DAYTIME POPULATION		
\$104,684	\$103,016	\$99,688
AVERAGE HH INCOME		

TRAFFIC

Security Blvd	41,950 AADT
1-695	134,312 AADT
Rolling Rd	23,102 AADT

JOIN



★ macy's PREMIER PADS AT SECURITY MALL

PATRICK MILLER
pmiller@klnb.com
443-632-2042

JOE MEKULSKI
jmekulski@klnb.com
443-632-1343





WOODLAWN

BALTIMORE CITY →

← HOWARD COUNTY

DOGWOOD STATION
 WELLS FARGO
 PIZZA HUT
 NEW BLOCK
FAMILY DOLLAR
 Walgreens

U.S. DEPARTMENT OF HEALTH & HUMAN SERVICES
 922,000 SF | 4,100 EMPLOYEES

BELTWAY MINI-STORAGE

MEADOW SHOPPING CENTER
 (30,192 SF)
 FAMILY DOLLAR
 Walgreens
 metroPCS
 TACO BELL
 McDonald's

BOULEVARD SHOPS
 Panera BREAD
 FIVE GUYS
 BURGER & FRIES
 Ritas
 Lolo Pizzeria

Mobil

EXXON

BEST BUY

DUNKIN'

Shell

weis

41,950 (2007 ADT)
 23,000 (2007 ADT)

30,723 (2007 ADT)

SOCIAL SECURITY ADMINISTRATION
 824,563 SF | 12,000 EMPLOYEES

Burlington Coat Factory
 sears
 macy's
 OLD NAVY
SECURITY SQUARE PLAZA

89,503 (2007 ADT)

695
 138,312 (2007 ADT)

27,770 (2007 ADT)

70

70

MID-VIEW AERIAL

★ macy's PREMIER PADS AT SECURITY MALL

PATRICK MILLER
 pmiller@klnb.com
 443-632-2042

JOE MEKULSKI
 jmekulski@klnb.com
 443-632-1343



ODLAWN



MARKET AERIAL

★ macy's PREMIER PADS AT SECURITY MALL

PATRICK MILLER
 pmiller@klnb.com
 443-632-2042

JOE MEKULSKI
 jmekulski@klnb.com
 443-632-1343



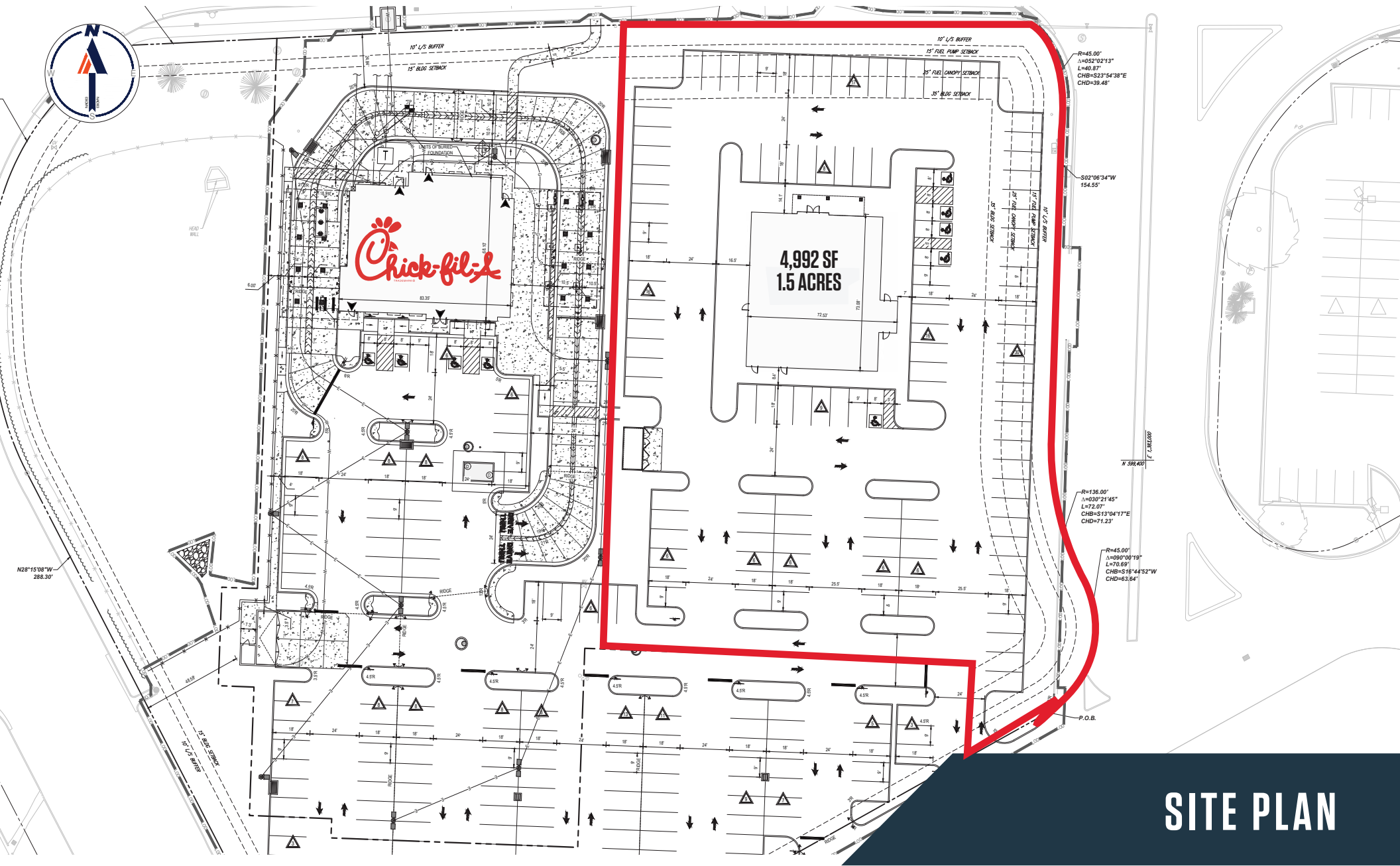


★ macy's PREMIER PADS AT SECURITY MALL

PATRICK MILLER
pmiller@klnb.com
443-632-2042

JOE MEKULSKI
jmekulski@klnb.com
443-632-1343

LISCIOTTI | klnb
DEVELOPMENT



SITE PLAN

★ macy's PREMIER PADS AT SECURITY MALL

PATRICK MILLER
 pmiller@klnb.com
 443-632-2042

JOE MEKULSKI
 jmekulski@klnb.com
 443-632-1343





LISCIOTTI
DEVELOPMENT

★ macy's PREMIER PADS AT SECURITY MALL
Security Blvd at Rt 695, Woodlawn, MD 21244

CONTACT

PATRICK MILLER
pmiller@klnb.com
443-632-2042

JOE MEKULSKI
jmekulski@klnb.com
443-632-1343

100 West Road, Suite 505
Towson, MD 21204

klnb.com

lisciotti.com

VISIT PROPERTY WEBSITE



While we have no reason to doubt the accuracy of any of the information supplied, we cannot, and do not, guarantee its accuracy. All information should be independently verified prior to a purchase or lease of the property. We are not responsible for errors, omissions, misuse, or misinterpretation of information contained herein and make no warranty of any kind, express or implied, with respect to the property or any other matters.

Information set forth is from sources we deem reliable and is subject to prior sales, lease, withdrawal without notice or change in prices and conditions. No representation is made as to the accuracy of any information furnished. All potential transactions are subject to REA review and approval by Macy's, mall ownership, anchors and related parties where needed. All potential transactions are subject to receipt of unconditional municipal subdivision approvals.