

BAYSIDE CORNER

36450 Tidal Rd., Selbyville, DE 19975
Sussex County



NEARBY RETAILERS:



bp



- Located at the entrance to the Bayside community with over 1200 homes and the Freeman Stage which hosts over 60 annual events and welcomes over 61,000 annual patrons (2019).

Melissa Welch
mwelch@klnb.com
703-268-2704



8065 Leesburg Pike, Suite 700
Tysons, VA 22182
klnb.com



BAYSIDE CORNER

36450 Tidal Rd., Selbyville, DE 19975
Sussex County

AERIAL VIEW



DRIVE-THRU VIEW



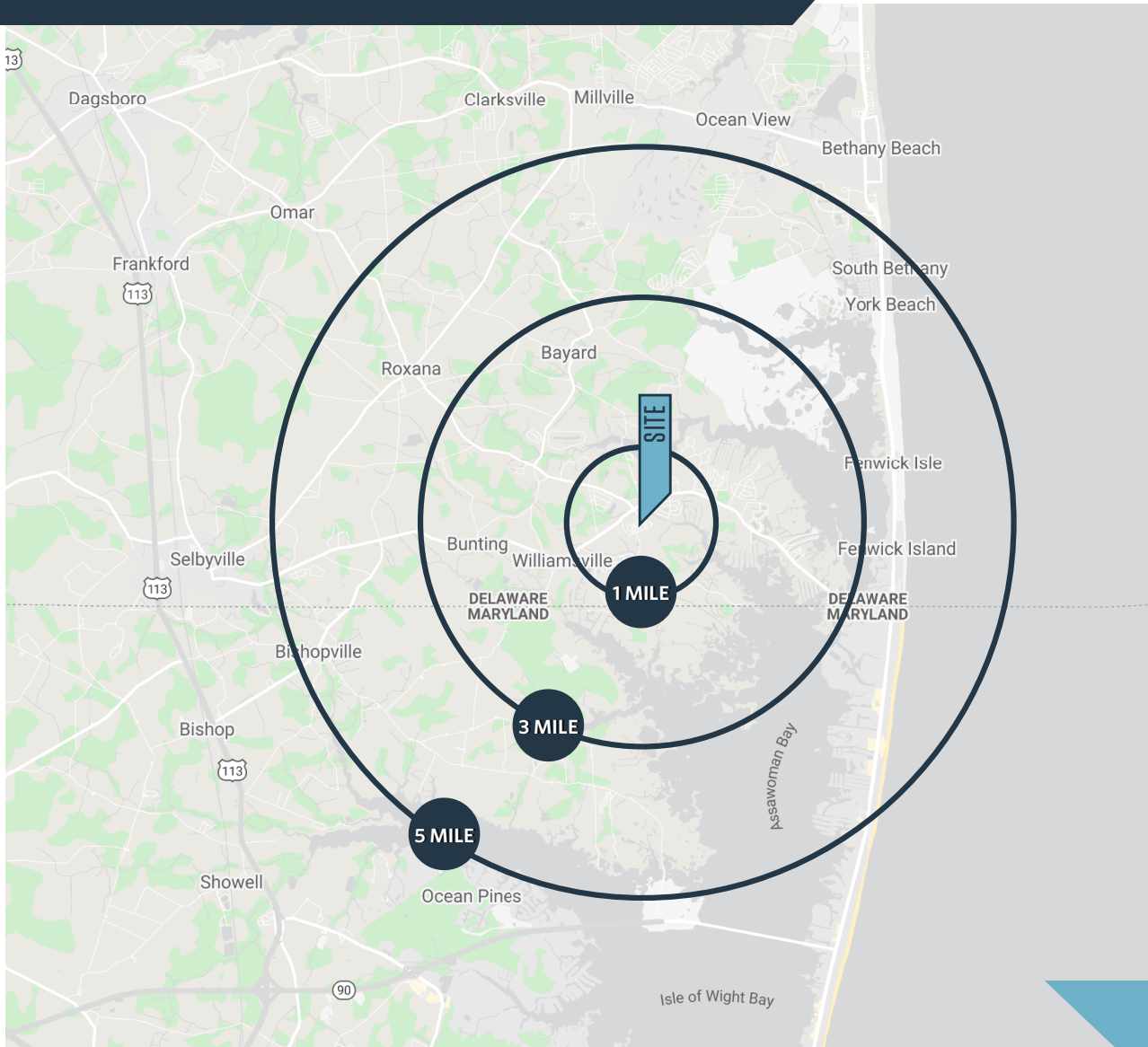
Melissa Welch
mwelch@klnb.com
703-268-2704

8065 Leesburg Pike, Suite 700
Tysons, VA 22182
klnb.com

klnb

BAYSIDE CORNER

36450 Tidal Rd., Selbyville, DE 19975
Sussex County



DEMOGRAPHICS | 2022:

1-MILE	3-MILE	5-MILE
Population		
2,925	9,247	24,786
Daytime Population		
1,148	2,157	10,343
Households		
1,576	4,511	12,122
Average HH Income		
\$121,984	\$115,153	\$111,343

[CLICK TO DOWNLOAD DEMOGRAPHIC REPORT](#)

TRAFFIC COUNTS | 2021:

Lighthouse Rd	7,290 ADT
Americana Pkwy	6,284 ADT

LOCATION & DEMOGRAPHICS

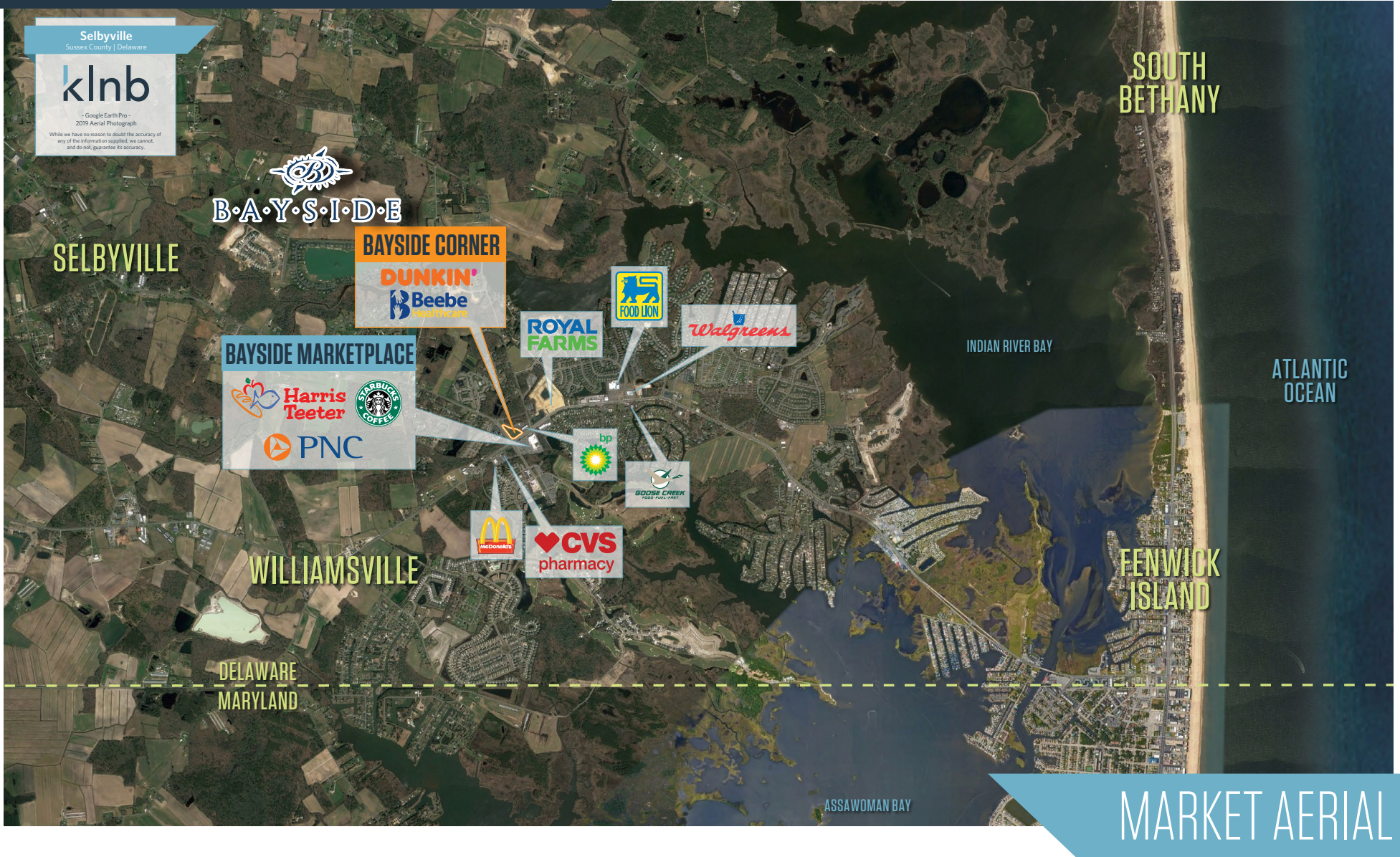
Melissa Welch
mwelch@klnb.com
703-268-2704

8065 Leesburg Pike, Suite 700
Tysons, VA 22182
klnb.com



BAYSIDE CORNER

36450 Tidal Rd., Selbyville, DE 19975
Sussex County



Melissa Welch
mwelch@klnb.com
703-268-2704

8065 Leesburg Pike, Suite 700
Tysons, VA 22182
klnb.com

klnb

BAYSIDE CORNER

36450 Tidal Rd., Selbyville, DE 19975
Sussex County



CLOSE-UP AERIAL

Melissa Welch
mwelch@klnb.com
703-268-2704

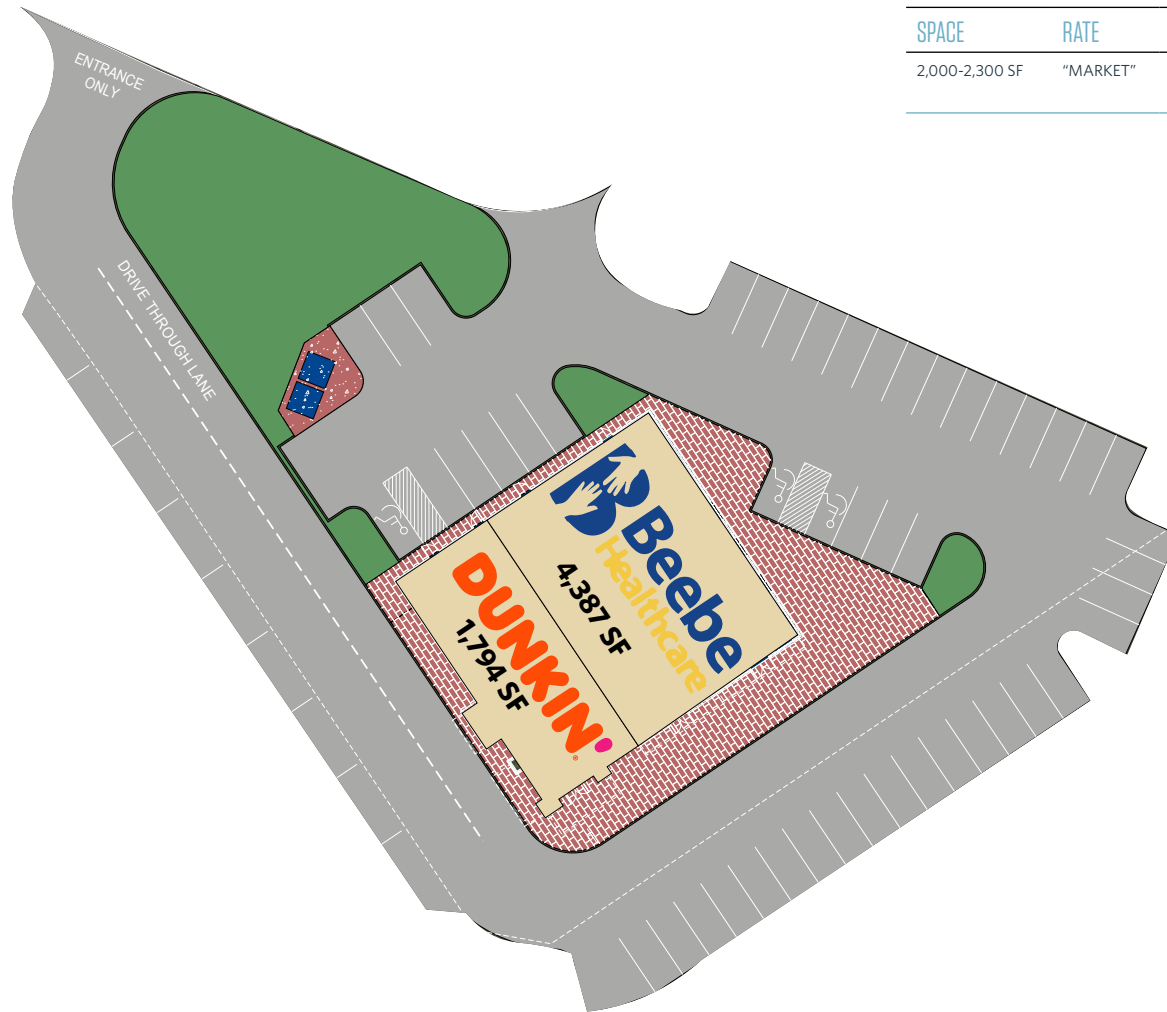
8065 Leesburg Pike, Suite 700
Tysons, VA 22182
klnb.com

klnb

BAYSIDE CORNER

36450 Tidal Rd., Selbyville, DE 19975
Sussex County

SPACE	RATE	CONDITION	DELIVERY	EST. NNN
2,000-2,300 SF	"MARKET"	VANILLA SHELL	SUMMER 2022	\$3.85 PSF



SITE PLAN

Melissa Welch
mwelch@klnb.com
703-268-2704

8065 Leesburg Pike, Suite 700
Tysons, VA 22182
klnb.com



BAYSIDE CORNER

36450 Tidal Rd., Selbyville, DE 19975
Sussex County



*This development plan is an artist's interpretation for illustrative purposes only and is subject to modifications and improvements without notice.

BAYSIDE COMMUNITY PLAN

Melissa Welch
mwelch@klnb.com
703-268-2704

8065 Leesburg Pike, Suite 700
Tysons, VA 22182
klnb.com



BAYSIDE CORNER

Selbyville, DE 19975
Sussex County

CLICK TO VIEW PROPERTY WEBSITE

For More Information, Please Contact:

Melissa Welch

mwelch@klnb.com

703-268-2704

8065 Leesburg Pike, Suite 700
Tysons, VA 22182

klnb.com

 facebook.com/KLNB

 [@KLNBLLC](https://twitter.com/KLNBLLC)

 linkedin.com/company/klnb

 instagram.com/klnbllc

While we have no reason to doubt the accuracy of any of the information supplied, we cannot, and do not, guarantee its accuracy. All information should be independently verified prior to a purchase or lease of the property. We are not responsible for errors, omissions, misuse, or misinterpretation of information contained herein and make no warranty of any kind, express or implied, with respect to the property or any other matters.

klnb