

CLASS A OFFICE

Maple Lawn | Howard County

8171 Maple Lawn Boulevard, Fulton, MD 20759



FOR SUBLEASE

NEARBY AMENITIES:



- **Location:** First floor
- **Available Space:** 4,862 SF total
- **Lease Rate:** \$25 PSF, Full Service
- **Parking:** 4 spaces per 1,000 SF
- Current occupant has exterior signage
- **Expiration Date:** March 31, 2024
- Upgraded finishes
- In the center of Maple Lawn's Office/Retail/Residential Community, located in Baltimore-Washington Corridor

Chuck Breitenother
cbreitenother@klnb.com
443-574-1422

9881 Broken Land Pkwy, #300
Columbia, MD 21046
klnb.com

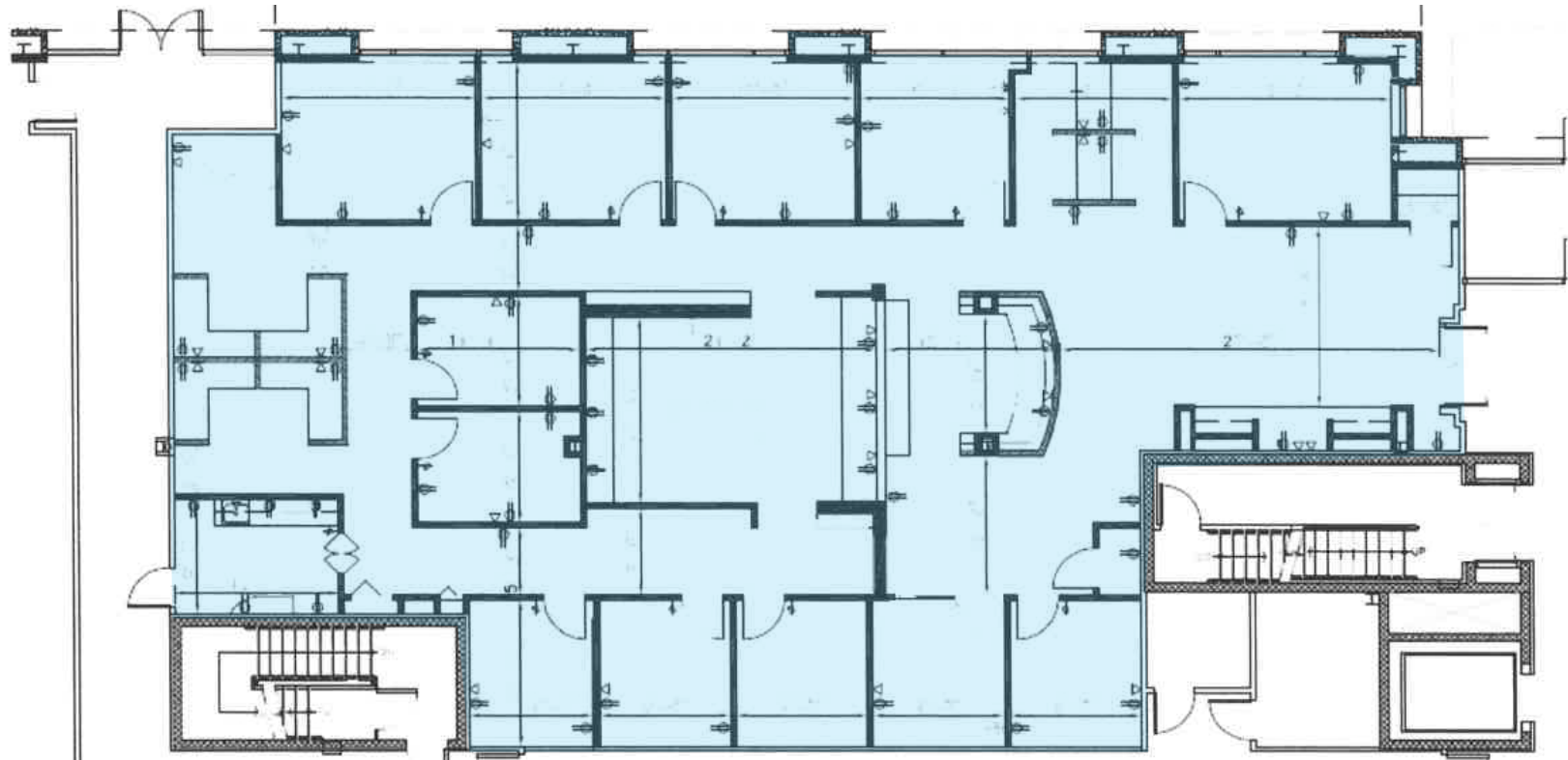


CLASS A OFFICE

Maple Lawn | Howard County

8171 Maple Lawn Boulevard, Fulton, MD 20759

FIRST FLOOR
4,862 SF



FLOOR PLAN

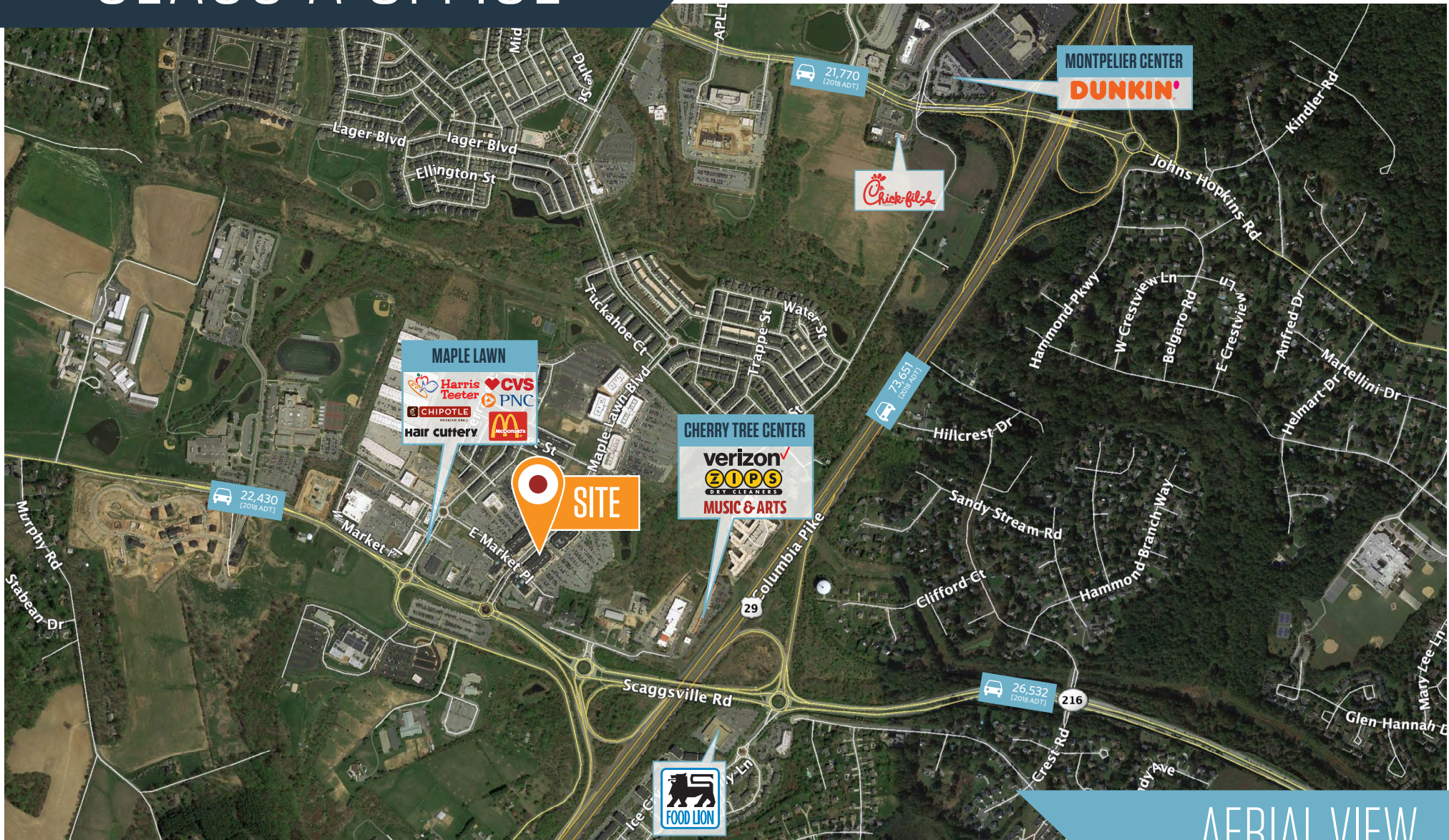
Chuck Breitenother
cbreitenother@klnb.com
443-574-1422

9881 Broken Land Pkwy, #300
Columbia, MD 21046
klnb.com



CLASS A OFFICE

8171 Maple Lawn Boulevard, Fulton, MD 20759
Howard County



AERIAL VIEW

Chuck Breitenother
cbreitenother@klnb.com
443-574-1422

9881 Broken Land Pkwy, #300
Columbia, MD 21046
klnb.com

NAklnb

CLASS A OFFICE

8171 Maple Lawn Boulevard, Fulton, MD 20759
Howard County



PHOTOS

Chuck Breitenother
cbreitenother@klnb.com
443-574-1422

9881 Broken Land Pkwy, #300
Columbia, MD 21046
klnb.com

NAklnb

CLASS A OFFICE

8171 Maple Lawn Boulevard, Fulton, MD 20759
Howard County



PHOTOS

Chuck Breitenother
cbreitenother@klnb.com
443-574-1422

9881 Broken Land Pkwy, #300
Columbia, MD 21046
klnb.com

NAIklnb

CLASS A OFFICE

8171 Maple Lawn Boulevard Fulton, MD 20759
Howard County

[CLICK TO VIEW PROPERTY WEBSITE](#)

For More Information, Please Contact:

Chuck Breitenother
cbreitenother@klnb.com
443-574-1422

9881 Broken Land Parkway, Suite 300
Columbia, MD 21046

klnb.com

 facebook.com/KLNB

 [@KLNBLLC](https://twitter.com/KLNBLLC)

 linkedin.com/company/klnb

 instagram.com/klnbllc

While we have no reason to doubt the accuracy of any of the information supplied, we cannot, and do not, guarantee its accuracy. All information should be independently verified prior to a purchase or lease of the property. We are not responsible for errors, omissions, misuse, or misinterpretation of information contained herein and make no warranty of any kind, express or implied, with respect to the property or any other matters.

NAIklnb