

# BELAIR-EDISON CROSSING

2401 Belair Road, Baltimore, MD  
Baltimore City



JOIN:

**FORMAN MILLS**

**WirelessWorld**

**Food Depot**

**DOLLAR GENERAL**

**DENTAL DREAMS**  
dentistry for KIDS and ADULTS

**SHOPPERS WORLD**

- 34,335 SF Available
- This 208,780 square foot shopping center is located between Belair Road and Edison Highway at the corner of Belair Road and Clifton Avenue. The property is directly across the street from the Clifton Park Municipal Golf Course just south of Erdman Avenue
- Anchored by Shoppers World, Forman Mills, Food Depot, Dollar General, and the Social Security Administration
- Two highly visible pylon signs serve the property; sign panels available on both the Belair Road and Edison Highway pylons
- Food Depot is the highest volume independent grocer in Baltimore

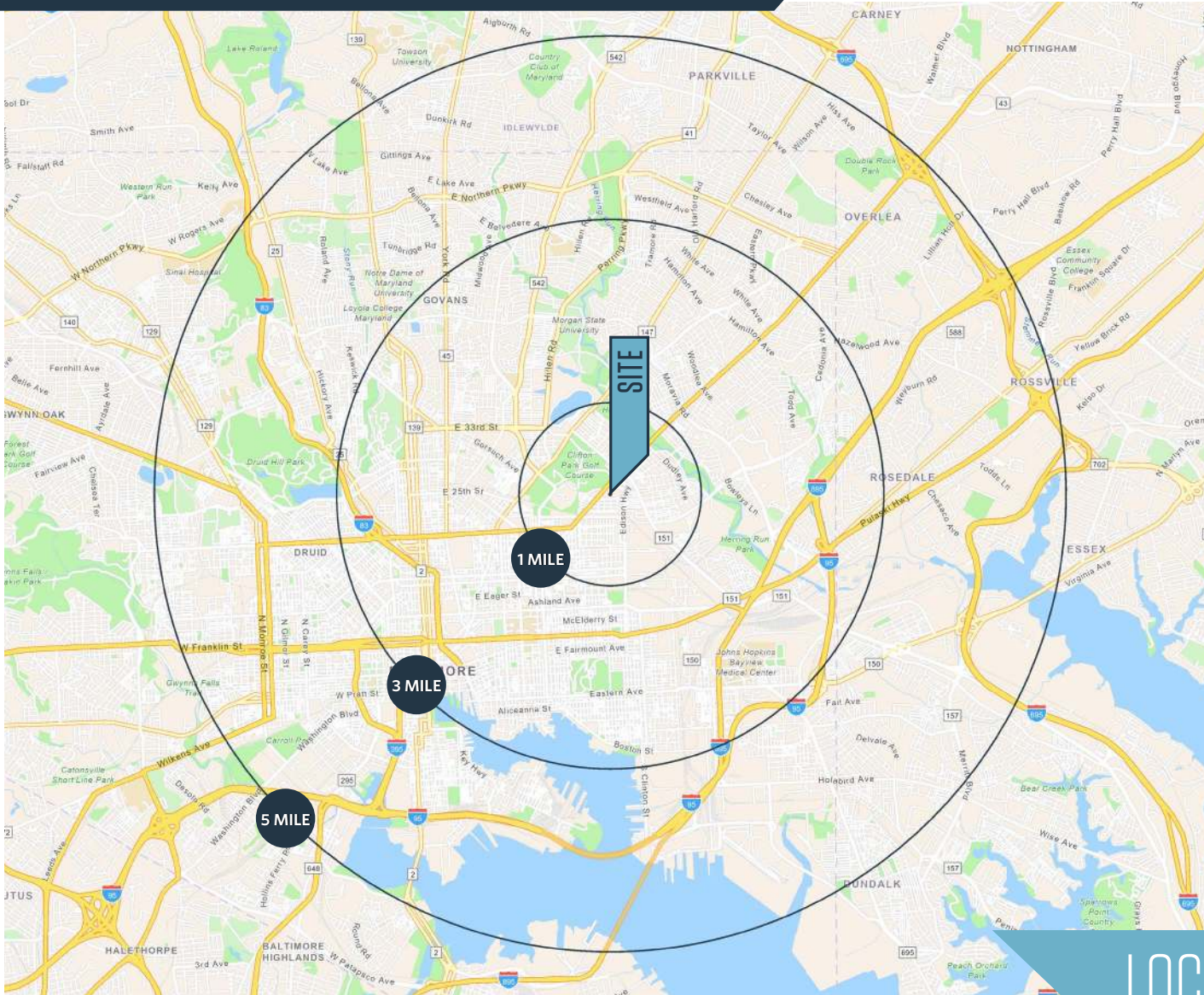
Keith Barnett  
kbarnett@klnb.com  
443-632-2047

100 West Road, Suite 505  
Towson, MD 21204  
klnb.com

**klnb**

# BELAIR-EDISON CROSSING

2401 Belair Road, Baltimore, MD  
Baltimore City



## DEMOGRAPHICS | 2024:

1-MILE	3-MILE	5-MILE
Population		
25,418	256,811	521,010
Daytime Population		
19,370	329,304	301,768
Households		
10,148	115,390	227,202
Average HH Income		
\$65,960	\$96,023	\$100,070

[CLICK TO DOWNLOAD DEMOGRAPHIC REPORT](#)

## TRAFFIC COUNTS | 2023:

Belair Road	21,482 ADT
Erdman Avenue	17,372 ADT

## LOCATION & DEMOGRAPHICS

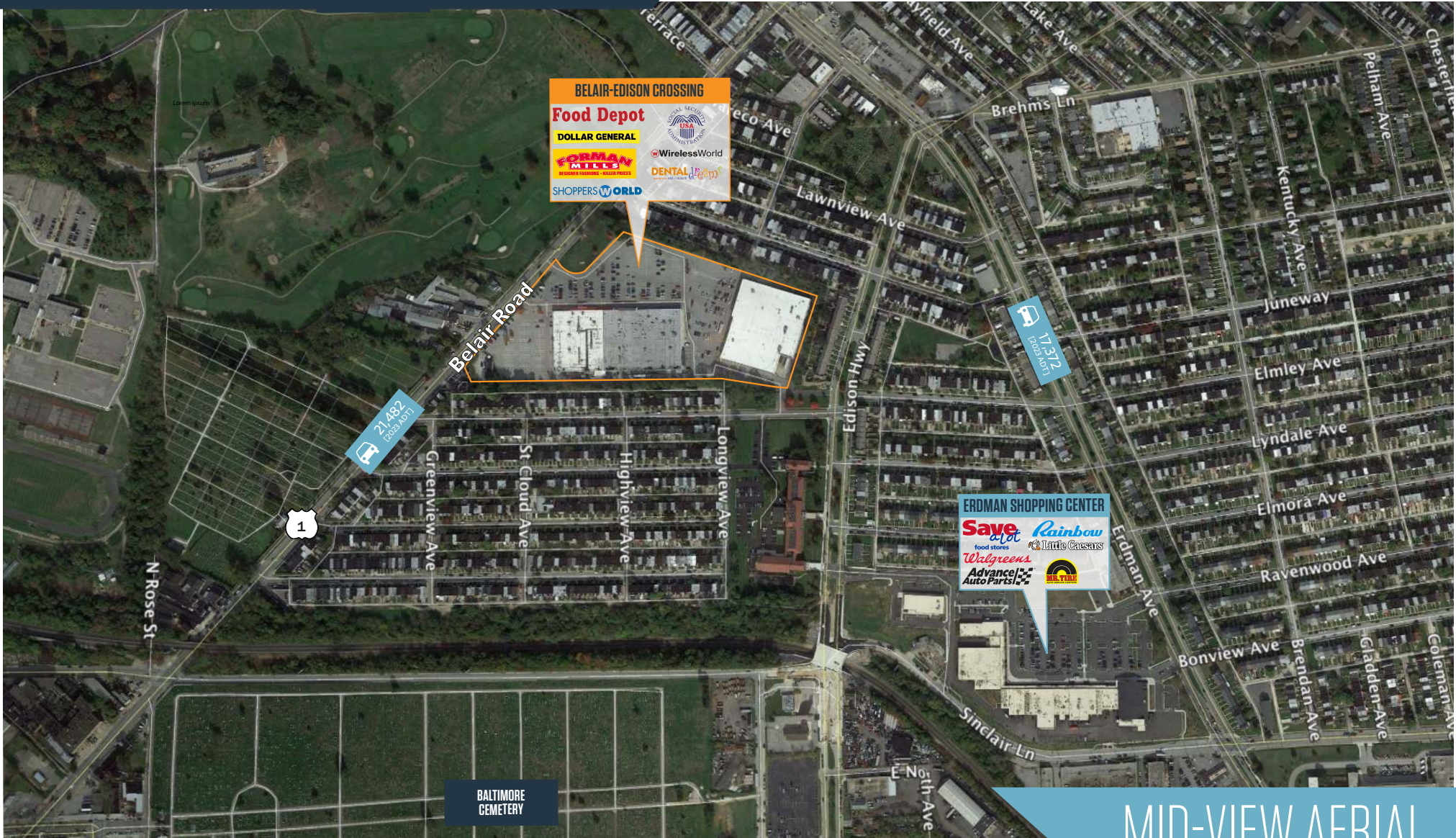
Keith Barnett  
kbarnett@klnb.com  
443-632-2047

100 West Road, Suite 505  
Towson, MD 21204  
klnb.com



# BELAIR-EDISON CROSSING

2401 Belair Road, Baltimore, MD  
Baltimore City



Keith Barnett  
kbarnett@klnb.com  
443-632-2047

100 West Road, Suite 505  
Towson, MD 21204  
klnb.com

klnb

# BELAIR-EDISON CROSSING

2401 Belair Road, Baltimore, MD  
Baltimore City



CLOSE-UP AERIAL

Keith Barnett  
kbarnett@klnb.com  
443-632-2047

100 West Road, Suite 505  
Towson, MD 21204  
klnb.com

klnb

# BELAIR-EDISON CROSSING

2401 Belair Road, Baltimore, MD  
Baltimore City



TENANTS		SF
FOOD DEPOT		49,833 SF
SUPER BEAUTY		13,000 SF
DENTAL DREAMS		4,392 SF
SOCIAL SECURITY ADMIN.		7,787 SF
AVAILABLE		34,335 SF
WIRELESS WORLD		1,600 SF
DOLLAR GENERAL		10,555 SF
SHOPPERS WORLD		30,000 SF
FORMAN MILLS		54,936 SF

Parking Provided: 680 Spaces

SITE PLAN

Keith Barnett  
kbarnett@klnb.com  
443-632-2047

100 West Road, Suite 505  
Towson, MD 21204  
klnb.com



# BELAIR-EDISON CROSSING

2401 Belair Road, Baltimore, MD  
Baltimore City

[CLICK TO VIEW PROPERTY WEBSITE](#)

For More Information, Please Contact:

**Keith Barnett**

[kbarnett@klnb.com](mailto:kbarnett@klnb.com)

443-632-2047

100 West Road, Suite 505  
Towson, MD 21204

[klnb.com](http://klnb.com)



[instagram.com/klnbcre](https://www.instagram.com/klnbcre)



[linkedin.com/company/klnb](https://www.linkedin.com/company/klnb)



[facebook.com/KLNBCRE](https://www.facebook.com/KLNBCRE)

While we have no reason to doubt the accuracy of any of the information supplied, we cannot, and do not, guarantee its accuracy. All information should be independently verified prior to a purchase or lease of the property. We are not responsible for errors, omissions, misuse, or misinterpretation of information contained herein and make no warranty of any kind, express or implied, with respect to the property or any other matters.

