



CITY HOUSE
CHARLES

NAI | klnb

1001

N. CHARLES STREET | BALTIMORE, MD 21201

DESIGN. VALUE. LOCATION.

DESIGN

Create office space right for you

VALUE

Choose the most competitive pricing

LOCATION

Join the most accessible business community in Baltimore





1001 N. CHARLES STREET

1001 N. Charles Street is one of Baltimore's most iconic spaces. Located in the stately, vibrant neighborhood of Mount Vernon, 1001 N. Charles Street is an innovative and modern work/retail venue known as City House Charles.

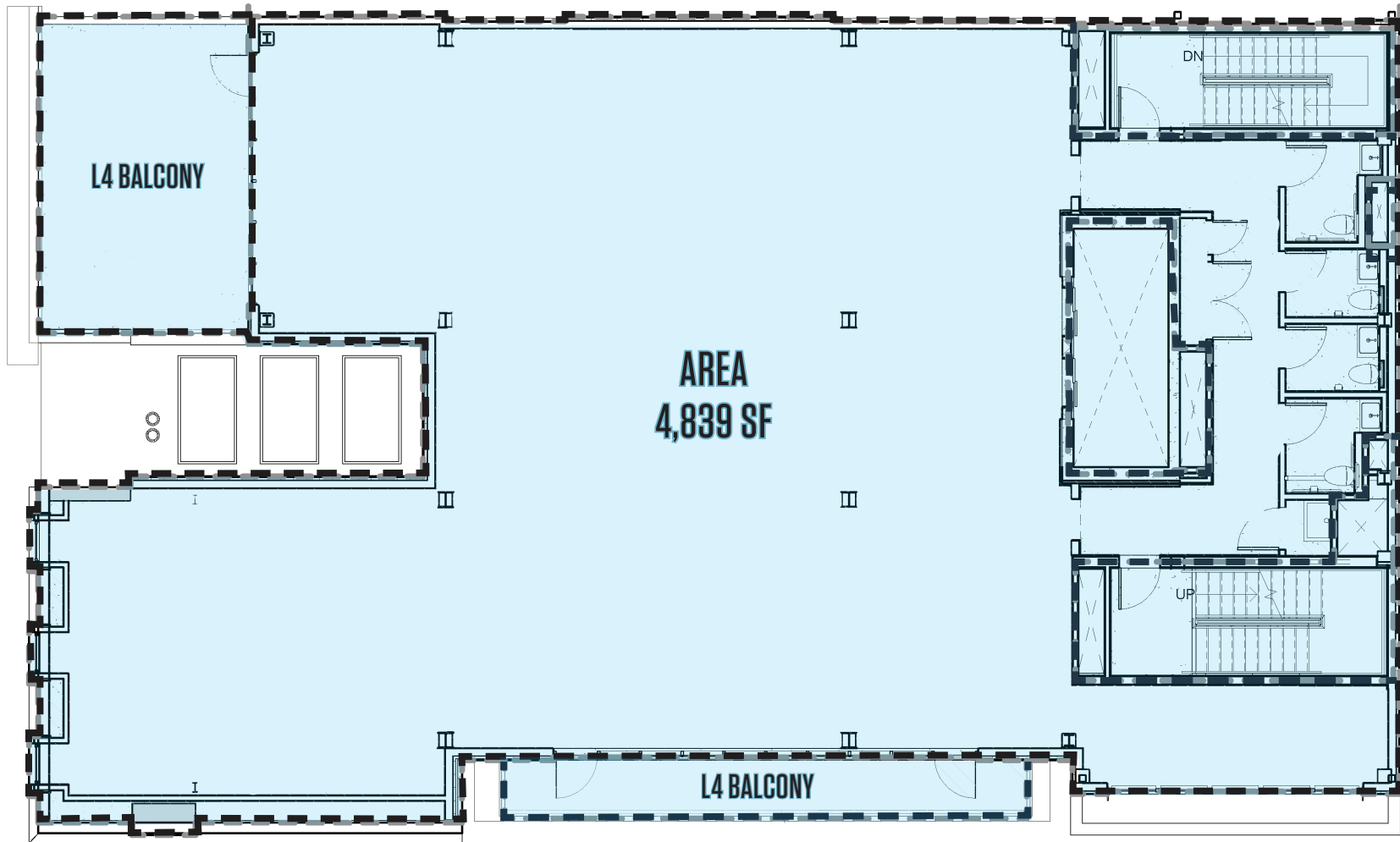
With a total of seven stories of floor-to-ceiling windowed office space and new ground-floor mixed-use retail space, City House Charles is setting a new standard for the conversion of a historic property into attractive and highly-desirable business and leisure accommodations. Design plans have included high-end lobby and common area finishes with a quality café amenity that will open directly into the lobby, creating a vibrant and engaging central core.

Roggenart and Allora are two restaurants that recently signed on for the main level of City House Charles, contributing to the variety of restaurants and bar options of the character-rich Mount Vernon-Belvedere district. At the end of the work day, tenants, their clients and guests will be able to take full advantage of the rich dining, shopping, cultural and artistic amenities of Baltimore's premier historic neighborhood.



PROPERTY HIGHLIGHTS

- Newly Constructed Class A Office Building
- Entire 4th Floor For Lease
- 4,839 Square Foot Floor Plate Available
- Lease Rate: Negotiable
- Bonus Outdoor Space with Amazing City Views of CBD
- On-Site Management
- One (1) Parking Spot Per 1,000 SF Rented
- Parking Lot Across The Street
- Ground Floor Restaurant & Cafe Space
- Exterior Facade Renovated 2022
- 24/7 Access for Building Tenants
- Multiple Balcony Spaces and a Rooftop Amenity Space
- Excellent Access to I-83, I-95, I-695, Rt. 295 and I-895
- BWI, MARC Train, Light Rail & Major Hotels Located Nearby



CURRENT 4TH FLOOR PLAN





PROPOSED 4TH FLOOR PLAN (WITH PERMIT)



10.8 Miles
TO BWI AIRPORT



1.3 Miles
TO DOWNTOWN/
INNER HARBOR



2.8 Miles
TO I-95



.4 Miles
TO MARC STATION/
AMTRAK

NEARBY AMENITIES



Mount Vernon
Place
Conservatory

THE WALTERS
ART MUSEUM

SUGARVALE

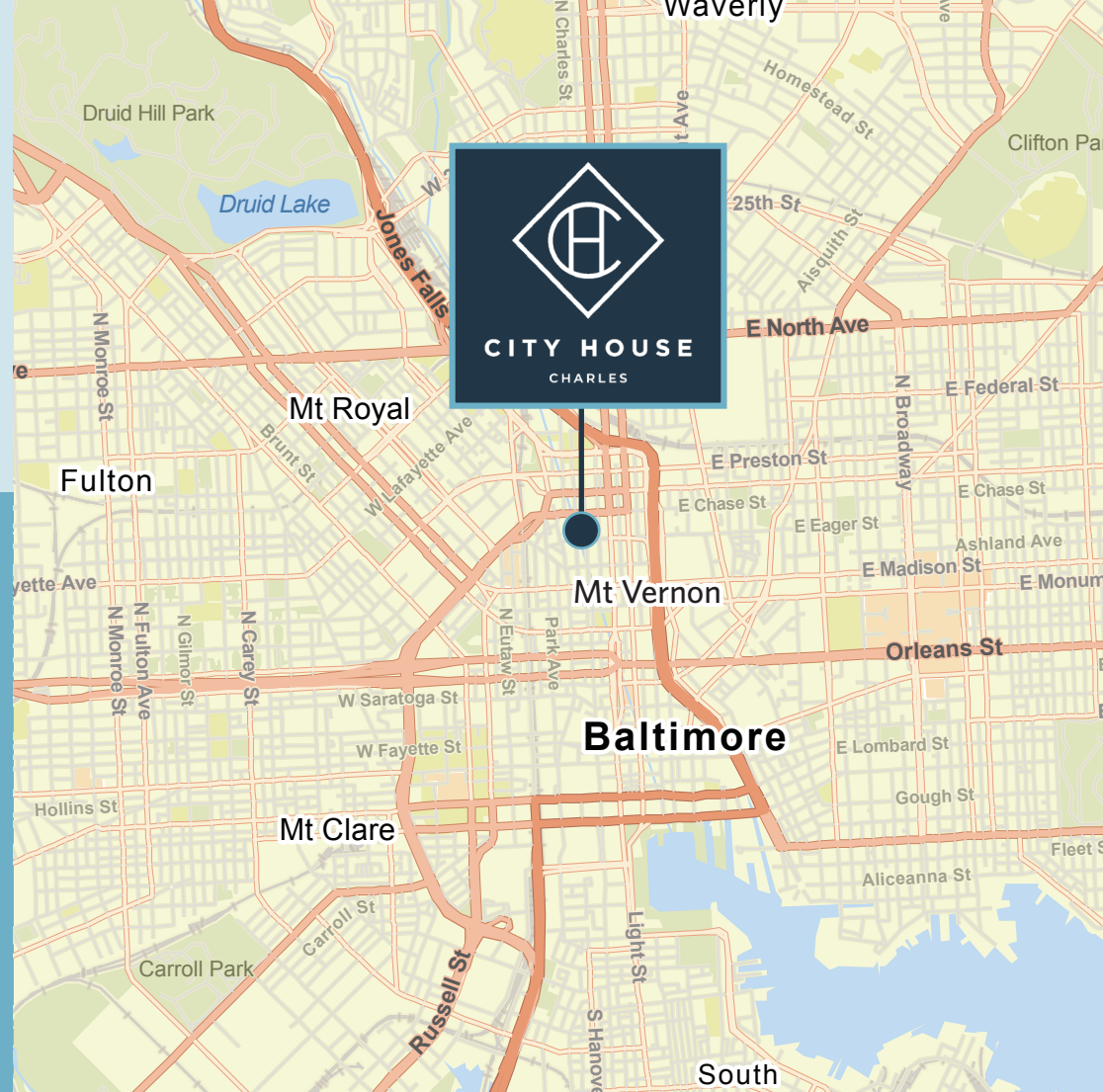
REVIVAL

JOHNS HOPKINS
PEABODY CONSERVATORY

DOOBY'S

ALLORA

ESTD BALTIMORE 1911
PENN STATION



CONTACT INFORMATION

Steele Stanwick

443-574-1420

sstanwick@klnb.com

Austin Eber

443-574-1414

aeber@klnb.com

9881 Broken Land Pkwy, # 300

Columbia, MD 21046

klnb.com

NAI klnb