



## FOR SALE

### PROPERTY HIGHLIGHTS:

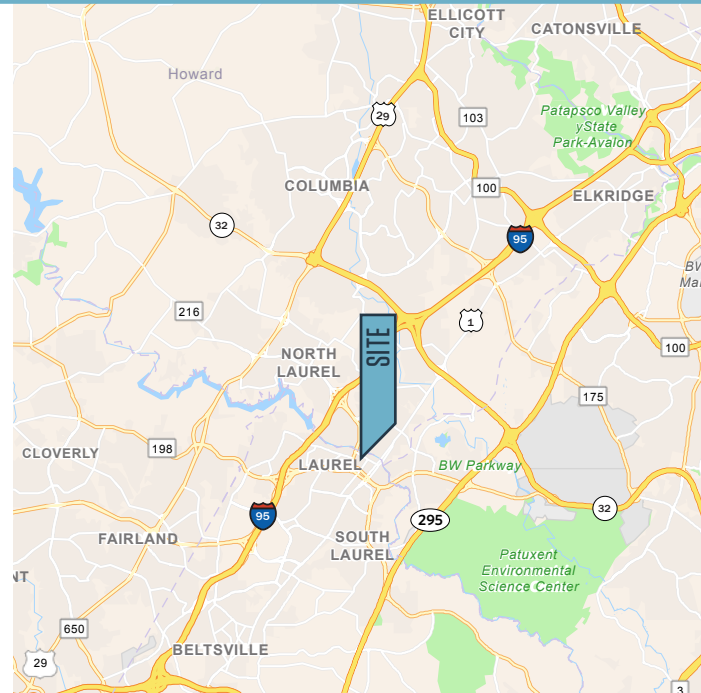
#### Suite Highlights

- **Size:** 2,618 square feet
- **Sale Price:** \$520,000
- **Annual Taxes:** \$7,023
- **Parking:** Five (5) available spaces

#### Building Highlights

- Two-stories retail storefront office
- Excellent access to Routes 198, 1, 295, & I-95

### NEARBY AMENITIES:



Austin Eber  
aeber@klnb.com  
443-574-1414

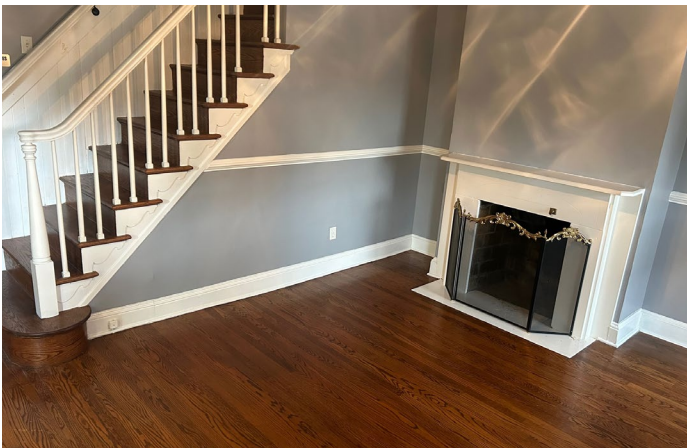
Chuck Breitenother  
cbreitenother@klnb.com  
443-574-1422

9881 Broken Land Pkwy, #300  
Columbia, MD 21046  
klnb.com

# 604 MAIN STREET

Laurel, MD 20707 | Prince George's County

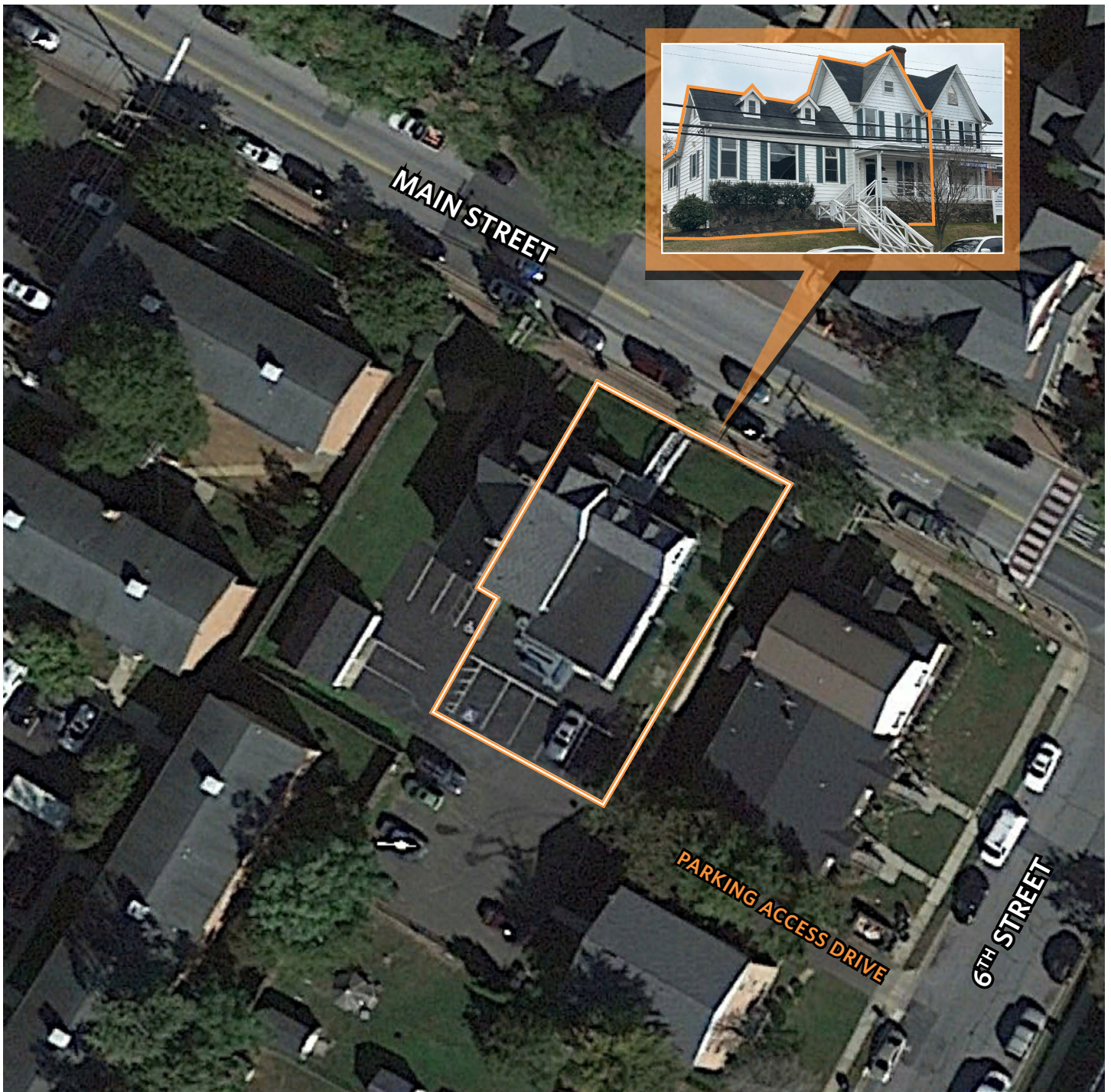
## PHOTOS



**Austin Eber**  
aeber@klnb.com  
443-574-1414

**Chuck Breitenother**  
cbreitenother@klnb.com  
443-574-1422

## AERIAL VIEW



# 604 MAIN STREET

Laurel, MD 20707 | Prince George's County



## MARKET AERIAL



Austin Eber  
aeber@klnb.com  
443-574-1414

Chuck Breitenother  
cbreitenother@klnb.com  
443-574-1422