



CLICK HERE TO WATCH VIRTUAL TOUR

JOIN THESE RETAILERS



RETAIL FOR LEASE

- 25,680 SF Junior Anchor space on two floors
- Regional center in the heart of Towson with a strong mix of national tenants
- Space located directly adjacent to high performing Walmart
- Dominant shopping center in the market

OWNED & MANAGED BY:



MICHAEL PATZ

mpatz@klnb.com | 443-632-2043

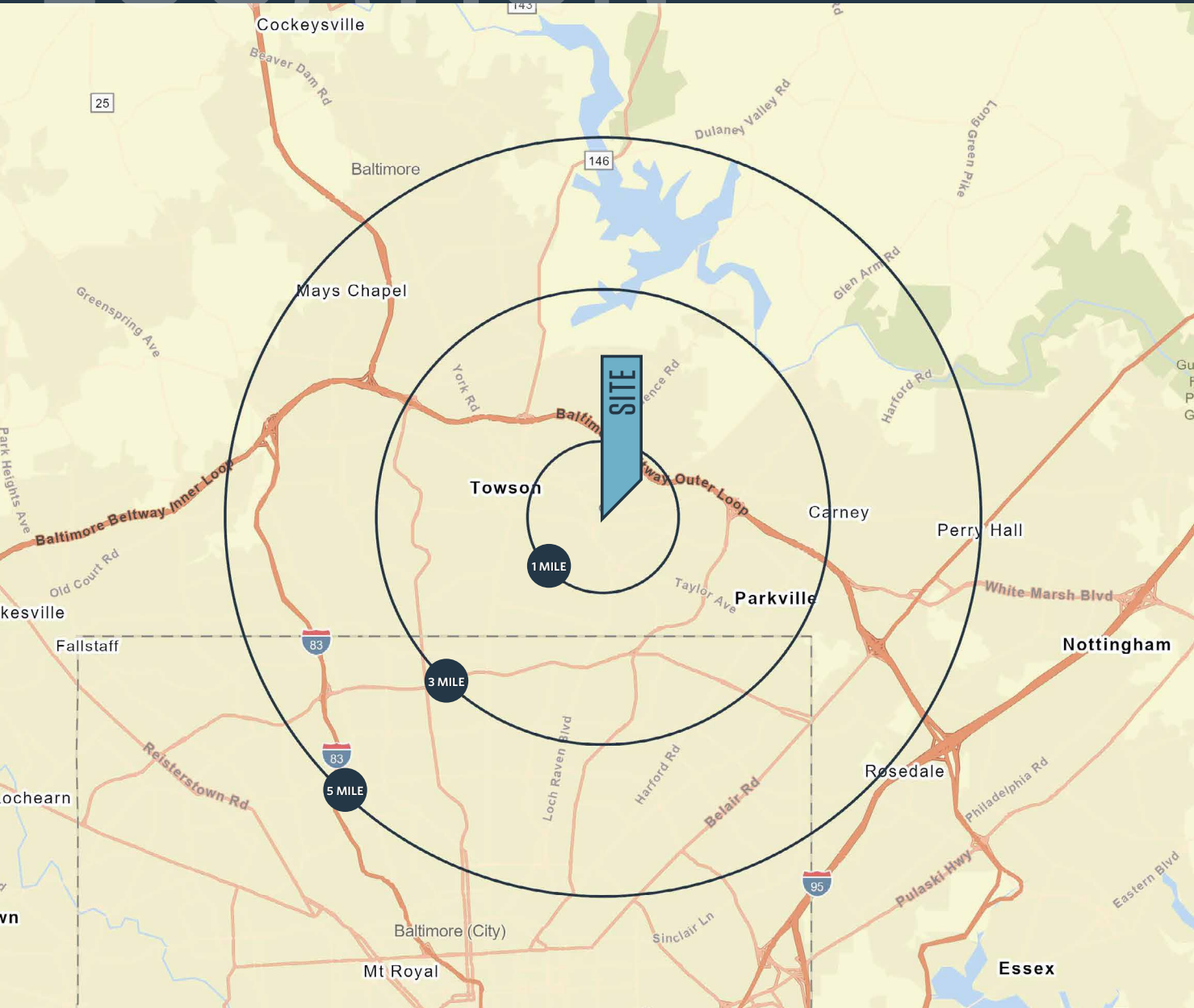
MASON BERNSTEIN

mbernstien@klnb.com | 443-632-2089

LOCATION

TOWSON PLACE

1238 PUTTY HILL AVE, TOWSON, MD 21286, BALTIMORE COUNTY



AVAILABLE SPACE:

- 25,680 SF high exposure Junior Anchor space on two floors

DEMOGRAPHICS | 2021:

	1-MILE	3-MILE	5-MILE
Population	14,840	141,089	331,971
Daytime Population	9,544	74,028	136,031
Households	6,556	56,511	132,024
Average HH Income	\$92,237	\$97,562	\$102,201

[CLICK TO DOWNLOAD DEMOGRAPHIC REPORT](#)

TRAFFIC COUNTS | 2021:

Putty Hill Ave	19,153 ADT
Goucher Blvd	18,621 ADT
Joppa Rd	21,061 ADT

MICHAEL PATZ

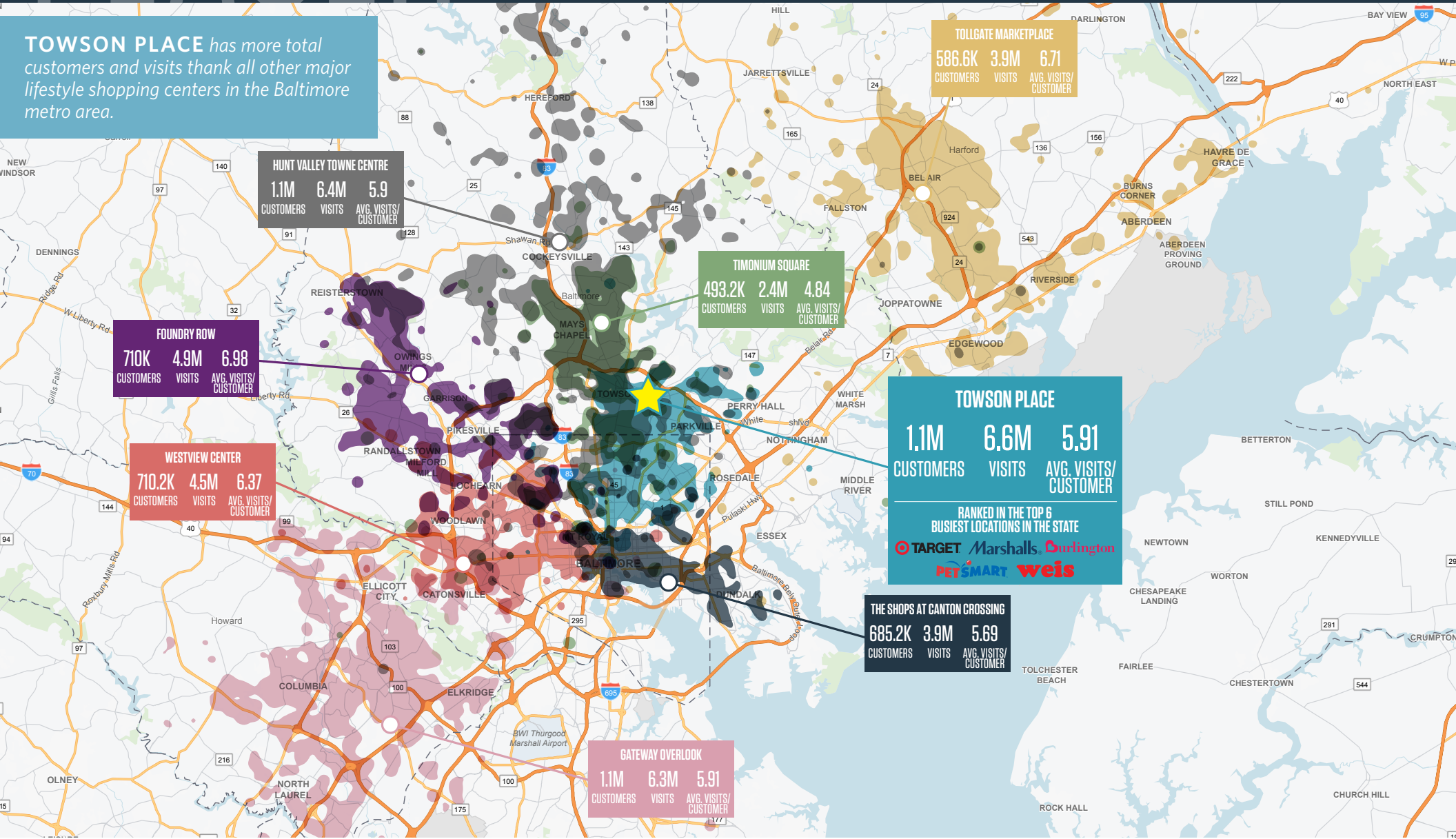
mpatz@klnb.com | 443-632-2043

MASON BERNSTEIN

mbernstien@klnb.com | 443-632-2089



TOWSON PLACE has more total customers and visits than all other major lifestyle shopping centers in the Baltimore metro area.



JAN 1, 2021 - DEC 31, 2021 | DATA PROVIDED BY PLACER LABS INC. (WWW.PLACER.AI)

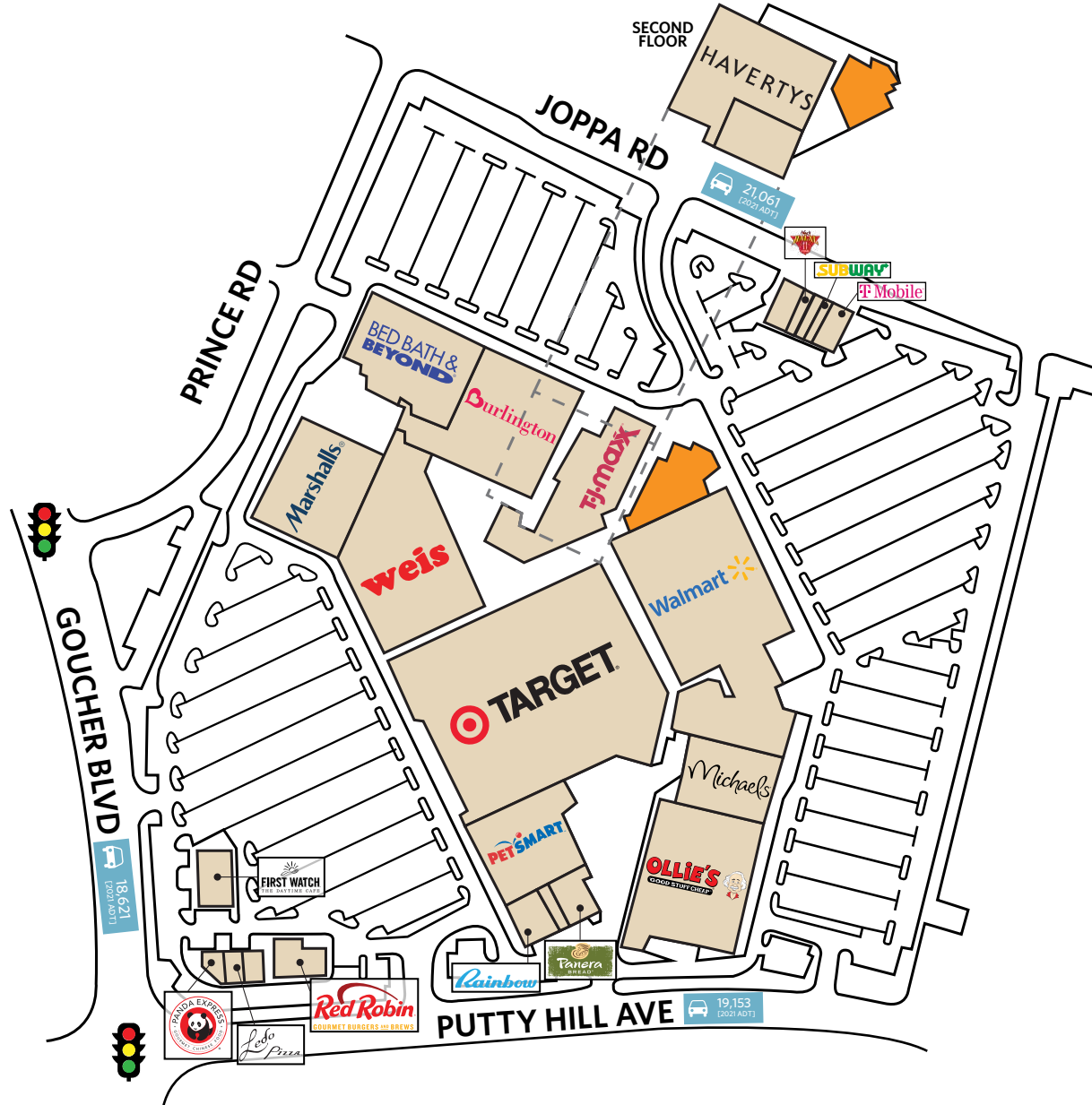
MICHAEL PATZ
mpatz@klnb.com | 443-632-2043

MASON BERNSTEIN
mbernstien@klnb.com | 443-632-2089

SITE PLAN

TOWSON PLACE

1238 PUTTY HILL AVE, TOWSON, MD 21286, BALTIMORE COUNTY



MICHAEL PATZ

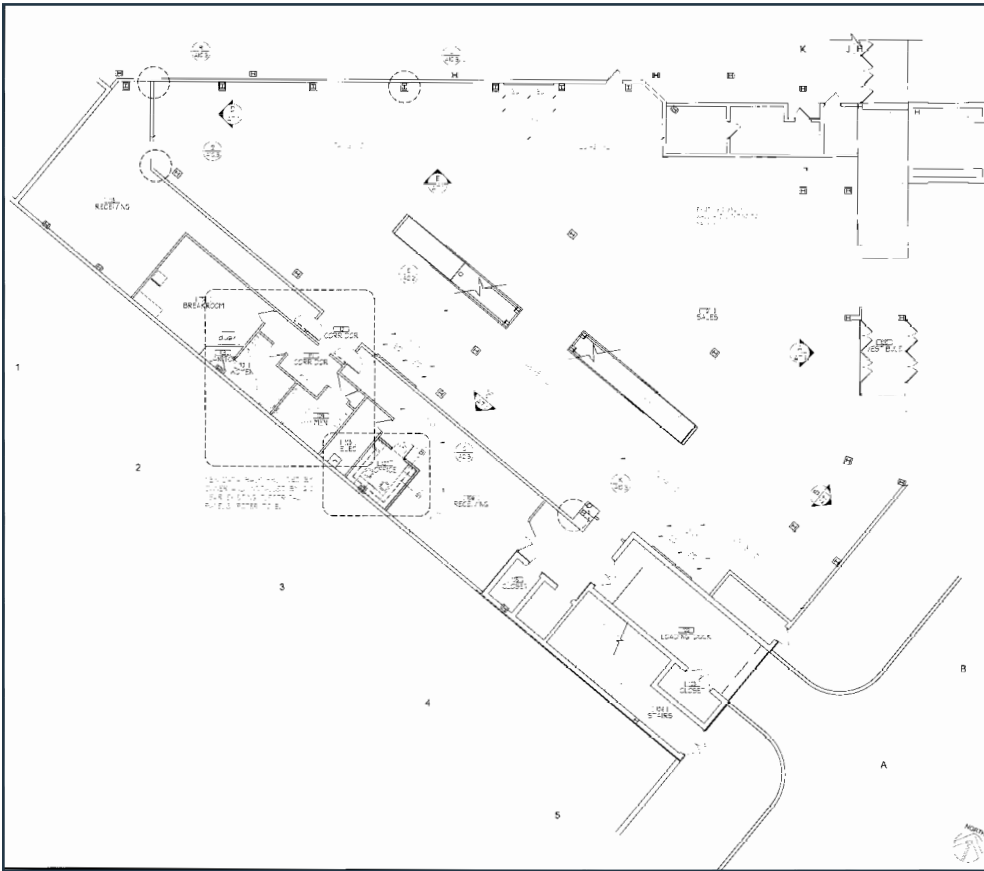
mpatz@klnb.com | 443-632-2043

MASON BERNSTEIN

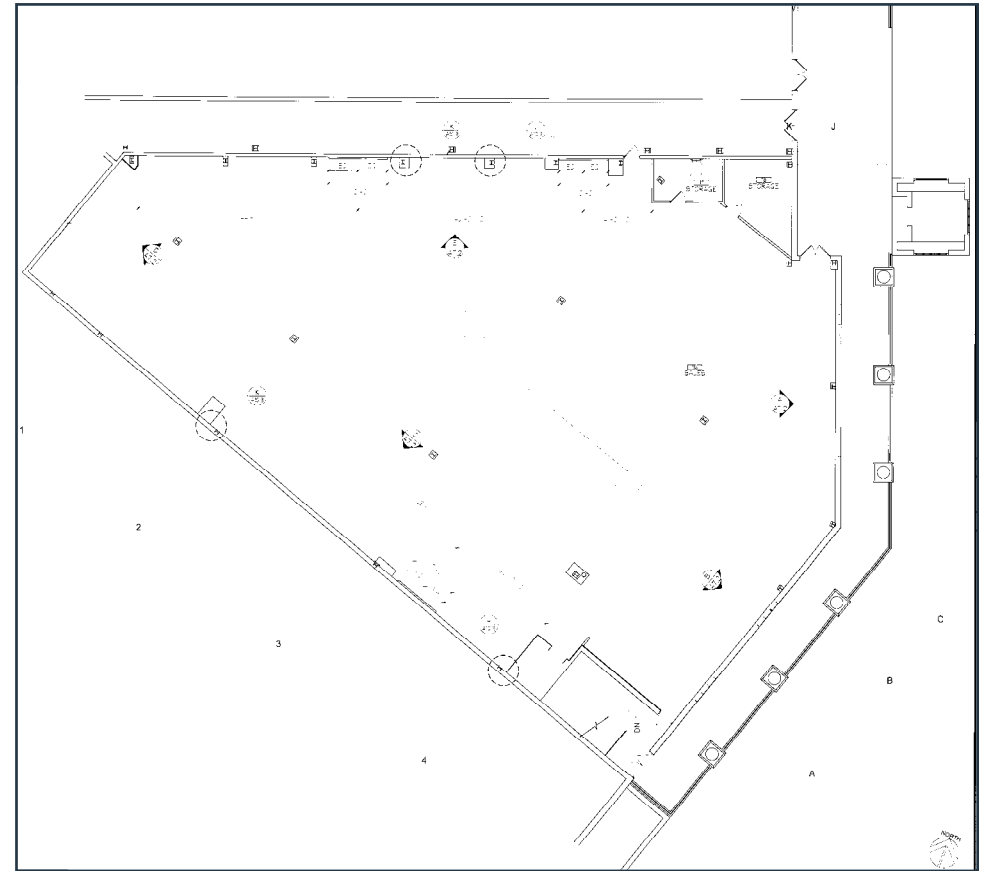
mbernstien@klnb.com | 443-632-2089



JUNIOR ANCHOR SPACE FIRST FLOOR



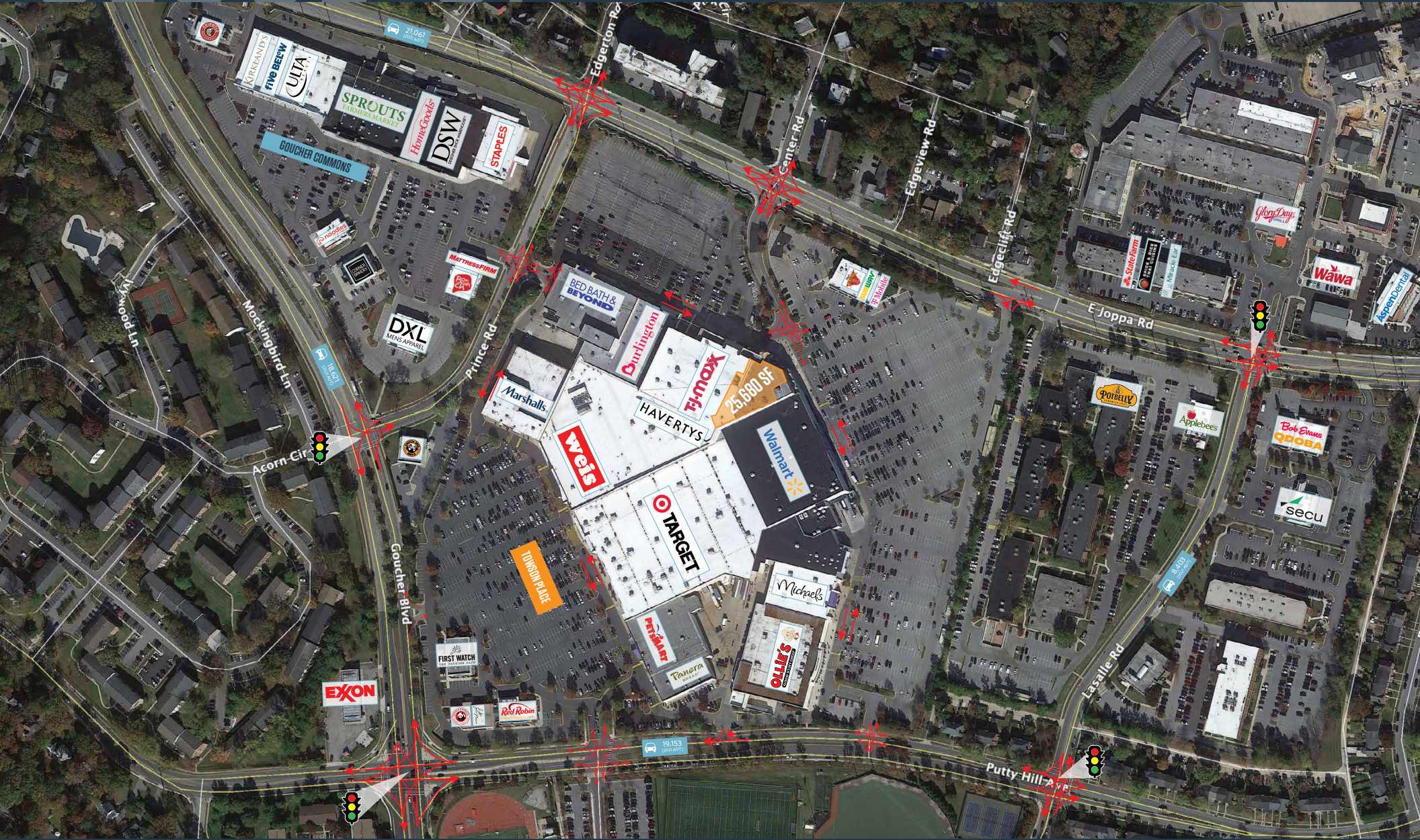
SECOND FLOOR



CLOSE-UP

TOWSON PLACE

1238 PUTTY HILL AVE, TOWSON, MD 21286, BALTIMORE COUNTY



MICHAEL PATZ
mpatz@klnb.com | 443-632-2043

MASON BERNSTEIN
mbernstien@klnb.com | 443-632-2089



PHOTOS

TOWSON PLACE

1238 PUTTY HILL AVE, TOWSON, MD 21286, BALTIMORE COUNTY



MICHAEL PATZ

mpatz@klnb.com | 443-632-2043

MASON BERNSTEIN

mbernstien@klnb.com | 443-632-2089

klnb



TOWSON PLACE

1238 PUTTY HILL AVE, TOWSON, MD 21286, BALTIMORE COUNTY

FOR MORE INFORMATION, PLEASE CONTACT:

MICHAEL PATZ

mpatz@klnb.com
443-632-2043

MASON BERNSTEIN

mbernstein@klnb.com
443-632-2089

100 West Road, Suite 505, Towson, MD 21204

.....

klnb.com

 facebook.com/KLNB

 [@KLNBLLC](https://twitter.com/KLNBLLC)

 linkedin.com/company/klnb

 instagram.com/klnbllc

CLICK TO VIEW PROPERTY WEBSITE

While we have no reason to doubt the accuracy of any of the information supplied, we cannot, and do not, guarantee its accuracy. All information should be independently verified prior to a purchase or lease of the property. We are not responsible for errors, omissions, misuse, or misinterpretation of information contained herein and make no warranty of any kind, express or implied, with respect to the property or any other matters.