



NEARBY RETAILERS

Walmart  **weis**

 **CVS**  **DOLLAR TREE**

Advance Auto Parts  **AutoZone**

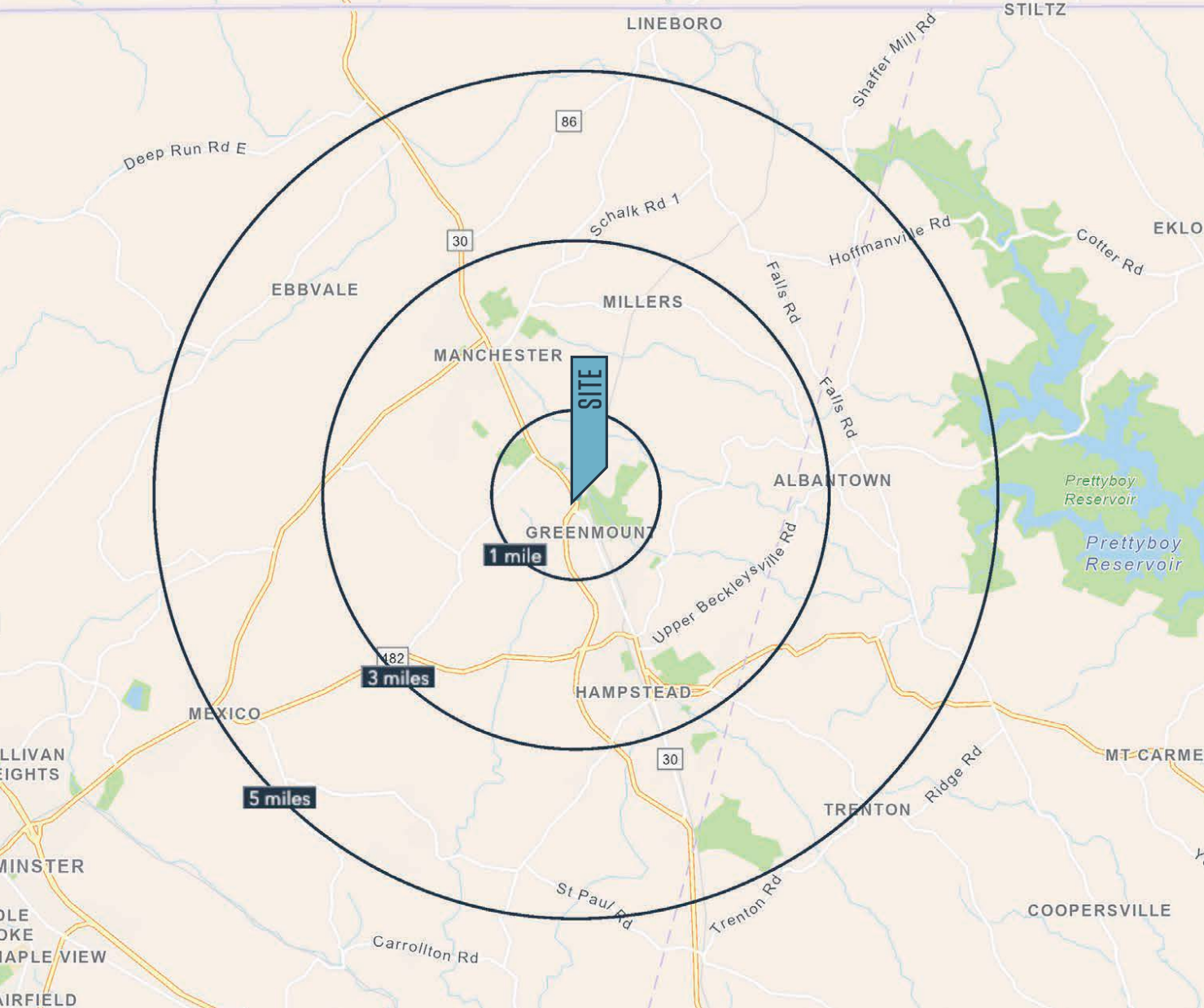
RETAIL FOR LEASE

- 3,066 SF three lane drive thru opportunity
- Located at signalized intersection
- 1.18 acres
- Immediately between Weis Markets and Walmart

LOCATION

2305 HANOVER PIKE

HAMPSTEAD, MARYLAND 21074, CARROLL COUNTY



DEMOGRAPHICS | 2022:

1-MILE	3-MILE	5-MILE
Population		
1,353	16,680	27,934
Daytime Population		
1,771	13,812	21,713
Households		
476	6,309	10,416
Average HH Income		
\$133,529	\$123,384	\$128,161

[CLICK TO DOWNLOAD DEMOGRAPHIC REPORT](#)

TRAFFIC COUNTS | 2021:

Hanover Pike 18,152 ADT

MICHAEL GINSBURG

mginsburg@klnb.com | 443-632-2041



MID-VIEW

2305 HANOVER PIKE

HAMPSTEAD, MARYLAND 21074, CARROLL COUNTY



MICHAEL GINSBURG

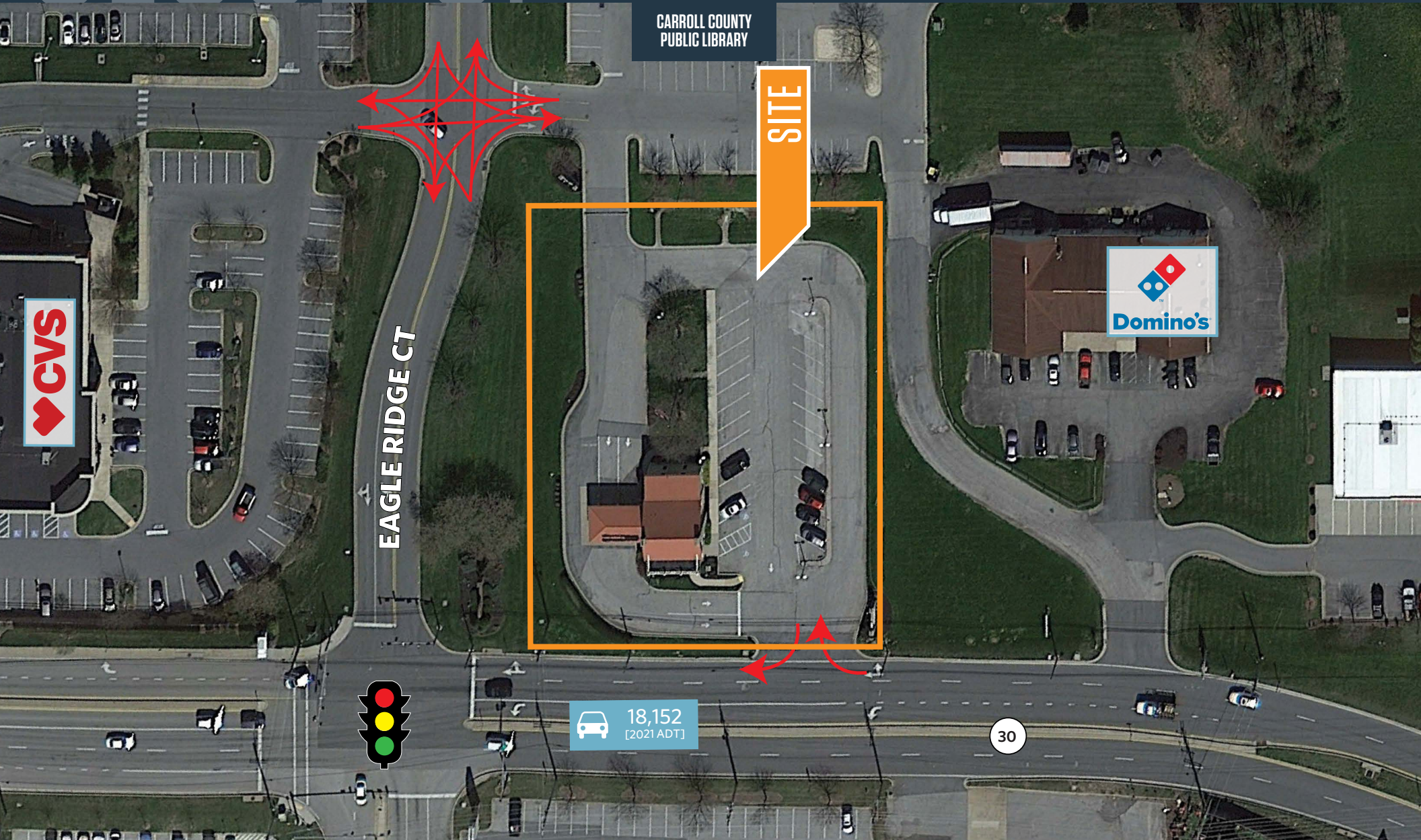
mginsburg@klnb.com | 443-632-2041



CLOSE-UP

2305 HANOVER PIKE

HAMPSTEAD, MARYLAND 21074, CARROLL COUNTY



MICHAEL GINSBURG

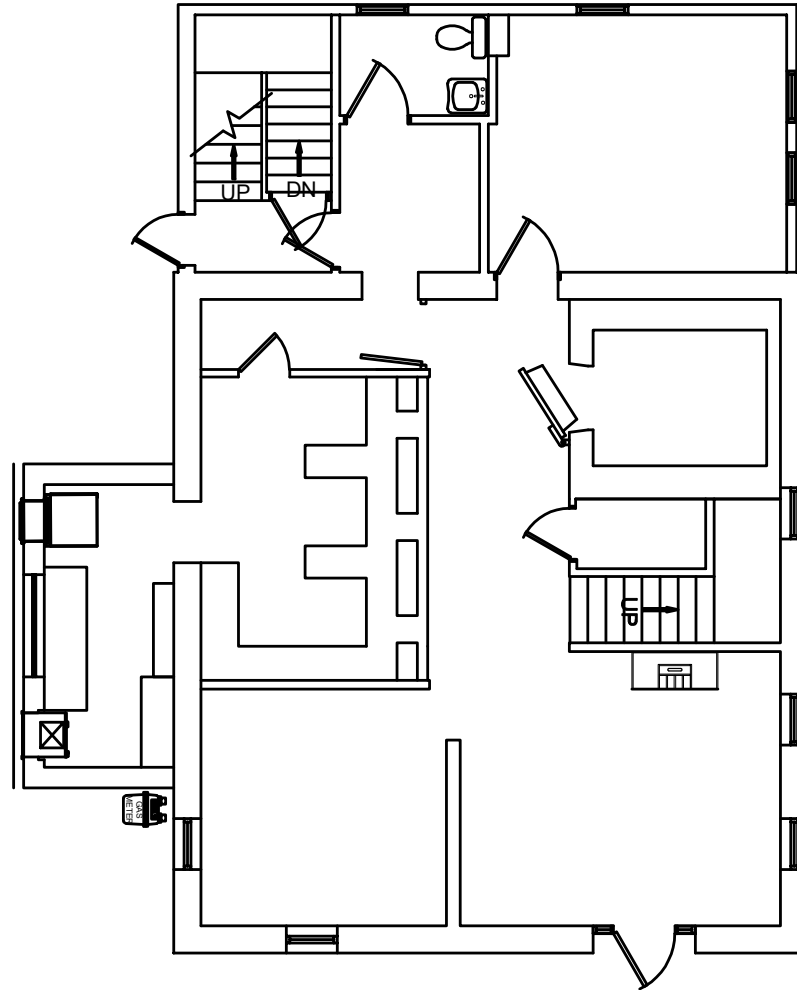
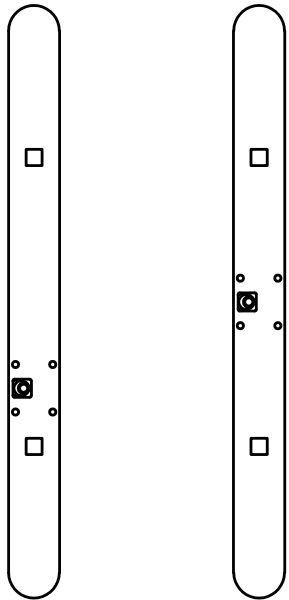
mginsburg@klnb.com | 443-632-2041

klnb

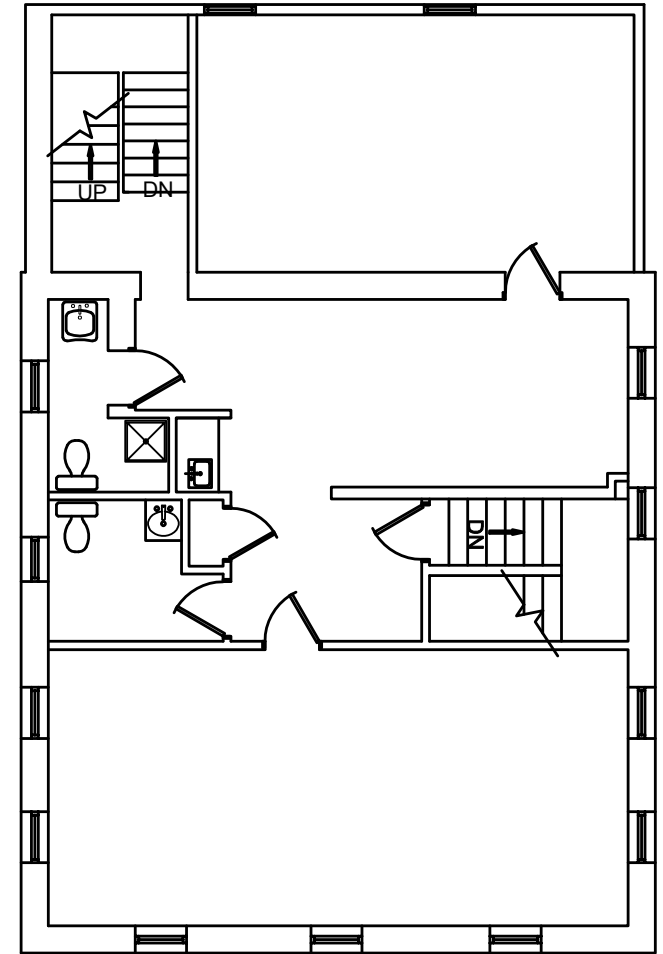
FLOOR PLAN

2305 HANOVER PIKE

HAMPSTEAD, MARYLAND 21074, CARROLL COUNTY



HAMPSTEAD
FIRST FLOOR



HAMPSTEAD
SECOND FLOOR



2305 HANOVER PIKE

HAMPSTEAD, MARYLAND 21074, CARROLL COUNTY

FOR MORE INFORMATION, PLEASE CONTACT:

MICHAEL GINSBURG

mginsburg@klnb.com

443-632-2041

100 West Road, Suite 505, Towson, MD 21204

.....

klnb.com

 facebook.com/KLNB

 [@KLNBLLC](https://twitter.com/KLNBLLC)

 linkedin.com/company/klnb

 instagram.com/klnbllc

CLICK TO VIEW PROPERTY WEBSITE

While we have no reason to doubt the accuracy of any of the information supplied, we cannot, and do not, guarantee its accuracy. All information should be independently verified prior to a purchase or lease of the property. We are not responsible for errors, omissions, misuse, or misinterpretation of information contained herein and make no warranty of any kind, express or implied, with respect to the property or any other matters.