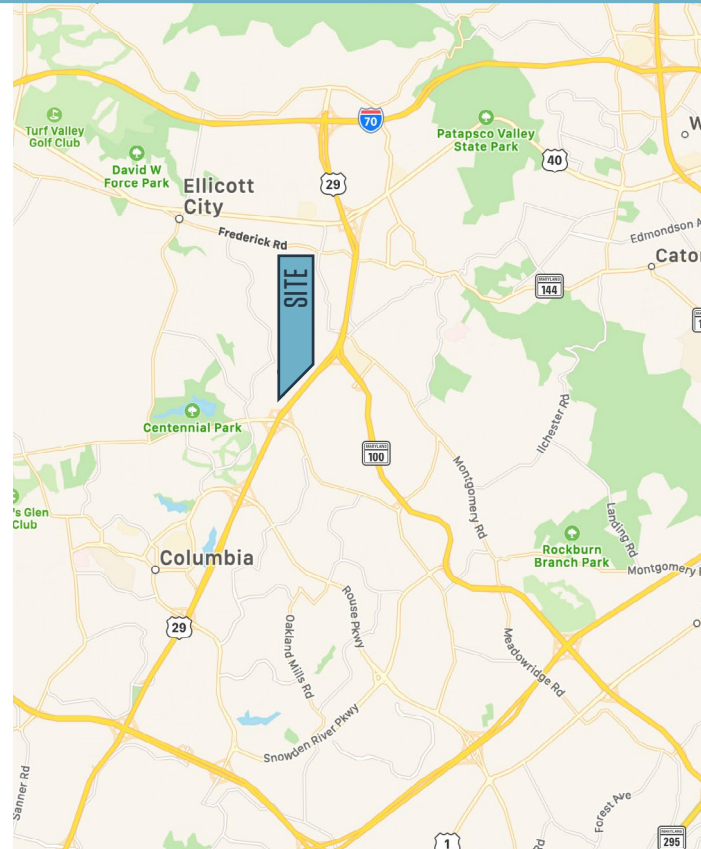




# CONDO FOR SALE

## PROPERTY HIGHLIGHTS:

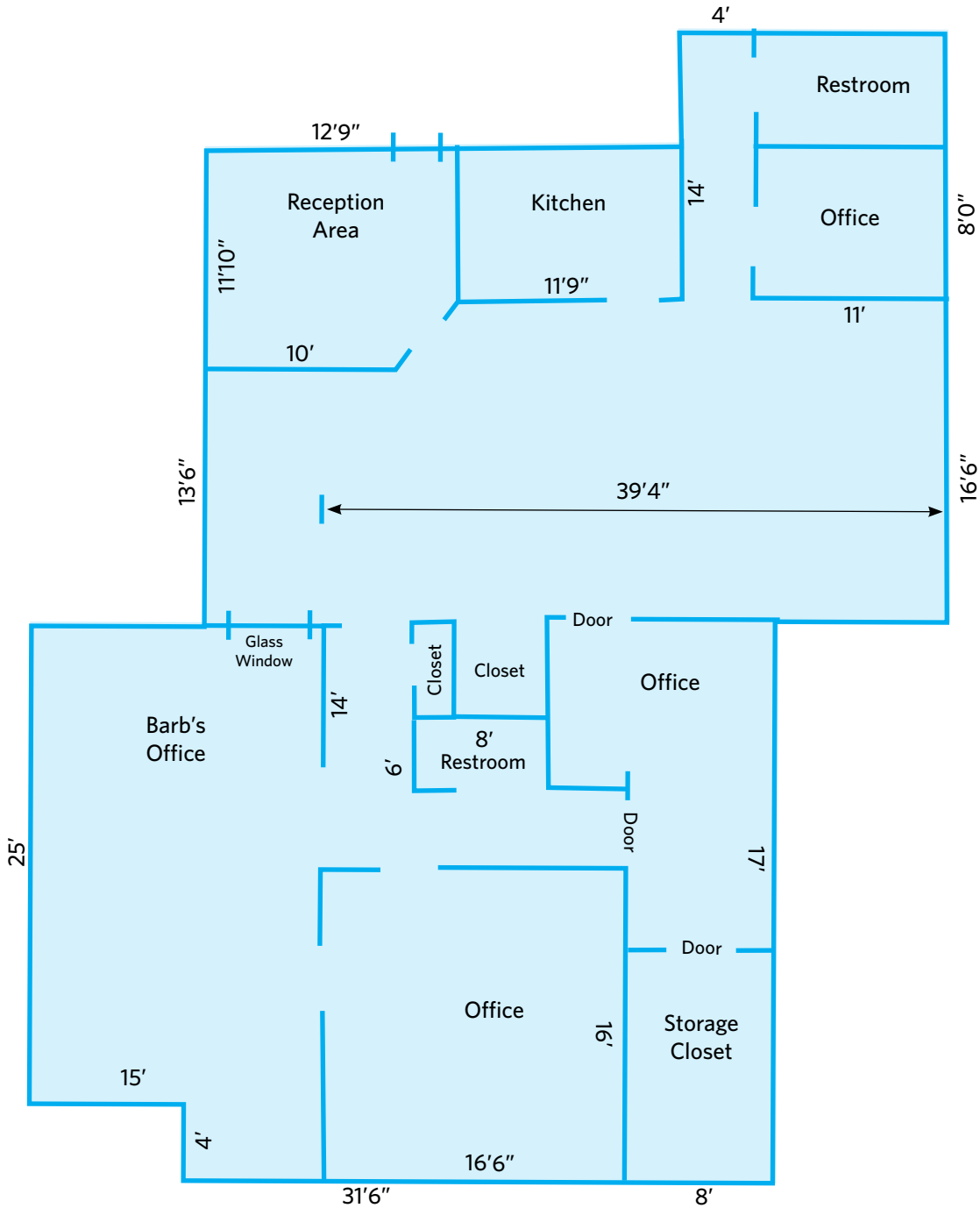
- **Available:** Suite 205
- **Total SF Available:** 2,241 SF
- **Sale Price:** \$370,000
- **Condo Fee:** \$470 per month
- Class A office space
- Two-story office/medical condominium building
- Close proximity to hotels, shopping malls, retail centers and recreational uses
- Excellent access to Routes 29, 108, 175 and 100
- Potential User/Investment/Executive Suites opportunity



# 5094 DORSEY HALL DRIVE

Ellicott City, MD 21042 | Howard County

## FLOOR PLAN





# 5094 DORSEY HALL DRIVE

Ellicott City, MD 21042 | Howard County

[CLICK TO VIEW PROPERTY WEBSITE](#)

For More Information, Please Contact:

**Abby Glassberg**

[aglassberg@klnb.com](mailto:aglassberg@klnb.com)

443-574-1433

**David J. Fritz, CCIM, SIOR**

[dfritz@klnb.com](mailto:dfritz@klnb.com)

443-574-1410

9881 Broken Land Parkway, Suite 300  
Columbia, MD 21046

[klnb.com](http://klnb.com)

 [facebook.com/KLNB](https://facebook.com/KLNB)

 [@KLNBLLC](https://twitter.com/KLNBLLC)

 [linkedin.com/company/klnb](https://linkedin.com/company/klnb)

 [instagram.com/klnbllc](https://instagram.com/klnbllc)

While we have no reason to doubt the accuracy of any of the information supplied, we cannot, and do not, guarantee its accuracy. All information should be independently verified prior to a purchase or lease of the property. We are not responsible for errors, omissions, misuse, or misinterpretation of information contained herein and make no warranty of any kind, express or implied, with respect to the property or any other matters.

**NAI** klnb