



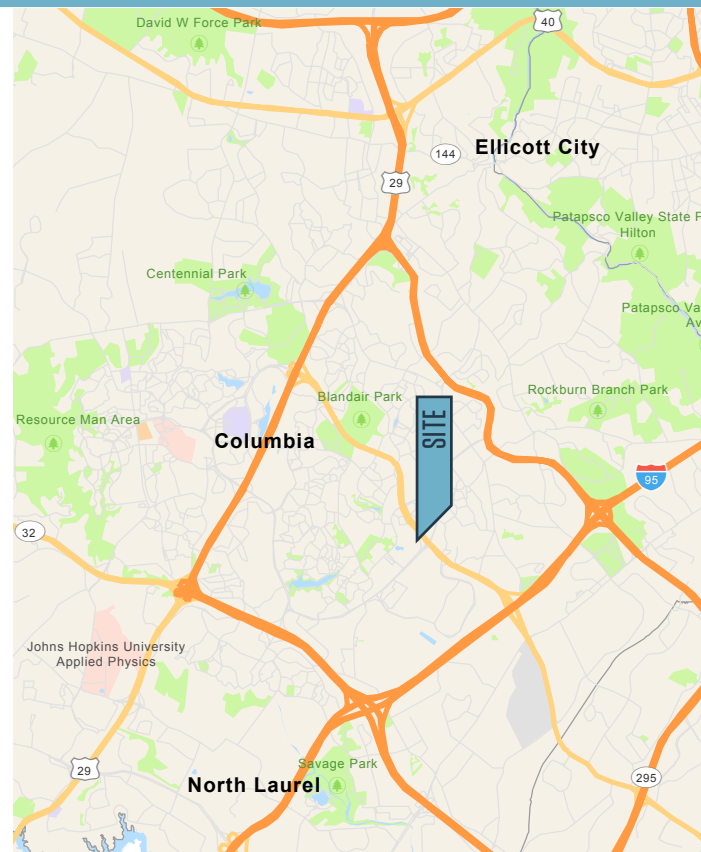
FOR SALE

PROPERTY HIGHLIGHTS:

Suite Highlights

- **Fourth Floor:** 2,012 square feet - 6,350 square feet
- **Price:** \$1,750,000 for all three (3) suites
- **Taxes:** Approx. \$2,617 per month
- **Condo Fees:** Approx. \$1,554 per month
- Exterior corner balcony
- Four (4) storage cages in the basement
- Access to Route 29, Route 175 and I-95

Nearby Amenities



Chuck Breitenother
cbreitenother@klnb.com
443-574-1422

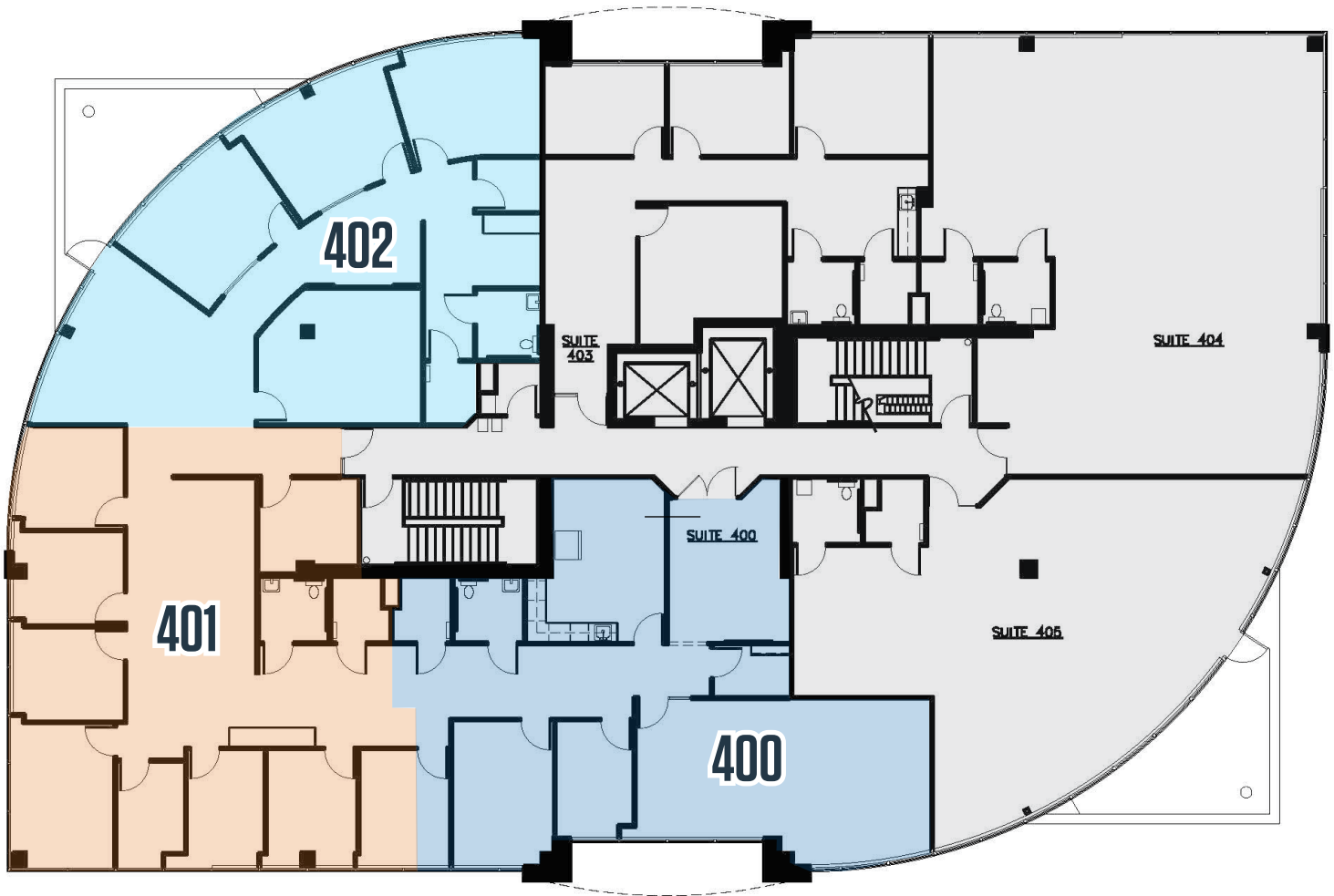
Austin Eber
aeber@klnb.com
443-574-1414

9881 Broken Land Pkwy, Suite 300
Columbia, MD 21046
klnb.com

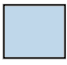
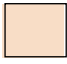

8894 STANFORD BLVD

Columbia, MD 21045 | Howard County

FOURTH FLOOR | 2,012 - 6,350 SQUARE FEET



AVAILABILITY - UP TO 6,350 SF TOTAL

-  **Suite 400**
2,122 rentable sq. ft.
-  **Suite 401**
2,216 rentable sq. ft.
-  **Suite 402**
2,012 rentable sq. ft.

Chuck Breitenother
cbreitenother@klnb.com
443-574-1422

Austin Eber
aeber@klnb.com
443-574-1414

PHOTOS



RESERVED PARKING



BUILDING LOBBY



CONFERENCE ROOM



KITCHEN



EXECUTIVE OFFICE



SMALL CONFERENCE ROOM

8894 STANFORD BLVD

Columbia, MD 21045 | Howard County

[CLICK TO VIEW PROPERTY WEBSITE](#)

For More Information, Please Contact:

Chuck Breitenother

cbreitenother@klnb.com

443-574-1422

Austin Eber

aeber@klnb.com

443-574-1414

9881 Broken Land Parkway, Suite 300

Columbia, MD 21046

klnb.com

 facebook.com/KLNB

 [@KLNBLLC](https://twitter.com/KLNBLLC)

 linkedin.com/company/klnb

 instagram.com/klnbllc

While we have no reason to doubt the accuracy of any of the information supplied, we cannot, and do not, guarantee its accuracy. All information should be independently verified prior to a purchase or lease of the property. We are not responsible for errors, omissions, misuse, or misinterpretation of information contained herein and make no warranty of any kind, express or implied, with respect to the property or any other matters.

NAI klnb