



5135 RIVER RD
Bethesda, MD 20816

3,507 SF FREE STANDING BUILDING
WITH DRIVE THRU!

CLICK TO VIEW VIRTUAL TOUR

FULL ACCESS

FULL ACCESS

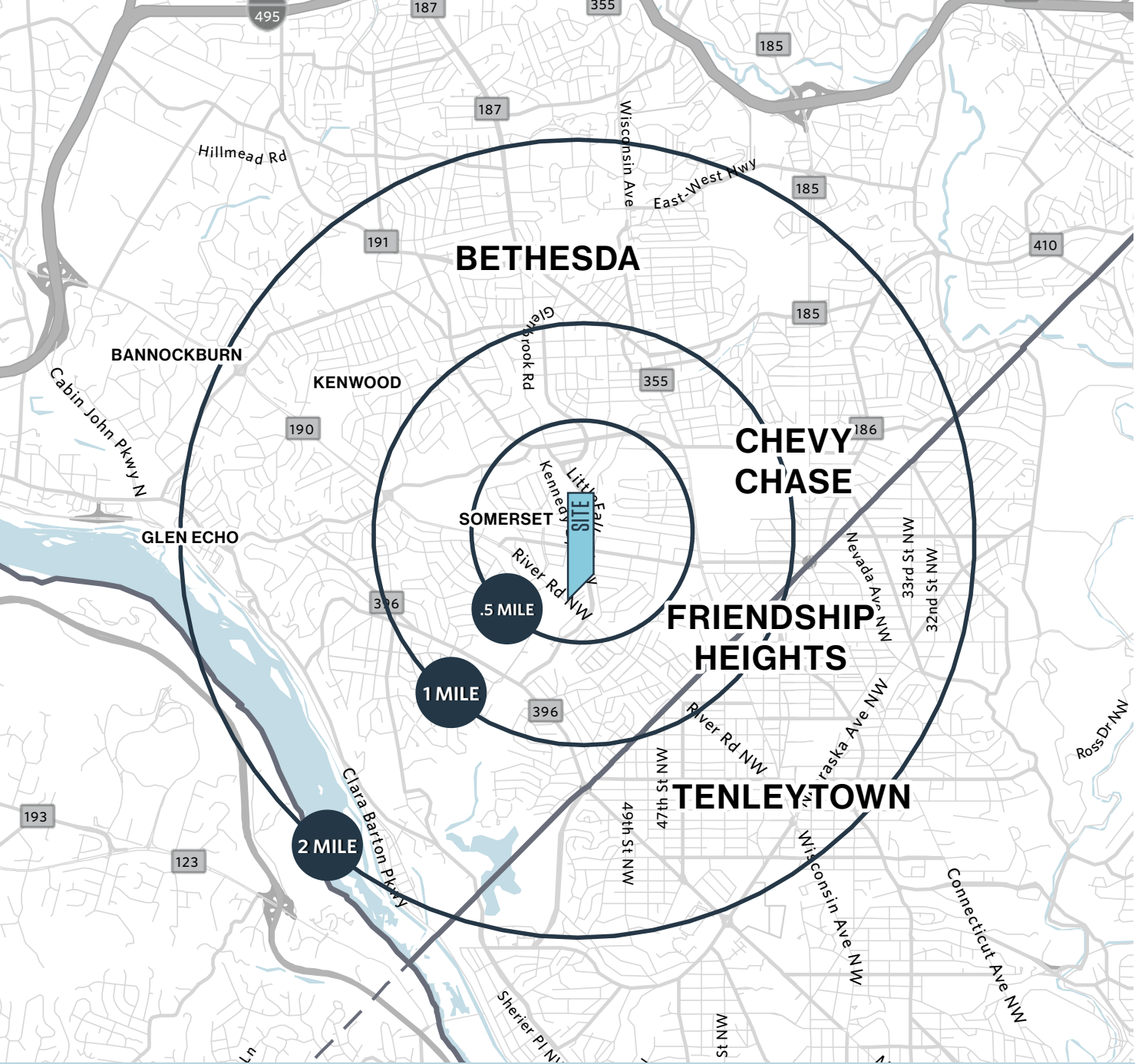
RIVER ROAD - 30,324 ADT

RETAIL FOR LEASE

MATT SKALET
mskalet@klnb.com
202.420.7775

BEN BECKER
bbecker@klnb.com
202.420.7773

klnb.com



PROPERTY HIGHLIGHTS

- 3,507 SF Free Standing Building
- 3 Drive Thru Lanes
- Full Access Movement
- Approximately 15 Parking Spaces

DEMOGRAPHICS

.5 mile	1 mile	2 miles	10 min drive
5,998	22,516	80,856	143,512
POPULATION			
6,098	29,535	113,873	173,954
DAYTIME POPULATION			
\$242,222	\$254,560	\$262,634	\$260,551
AVERAGE HH INCOME			

TRAFFIC

River Rd 30,324 ADT
 Walk Score Very Walkable (79)

JOIN



5135 RIVER RD

MATT SKALET
 mskalet@klnb.com
 202.420.7775

BEN BECKER
 bbecker@klnb.com
 202.420.7773





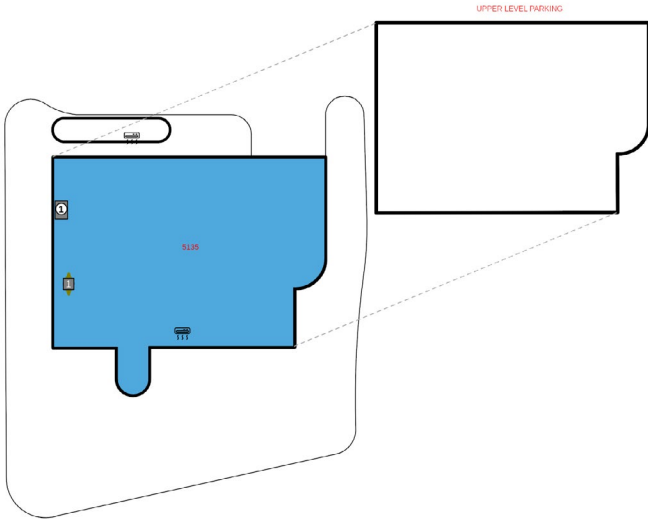
MARKET AERIAL

5135 RIVER RD

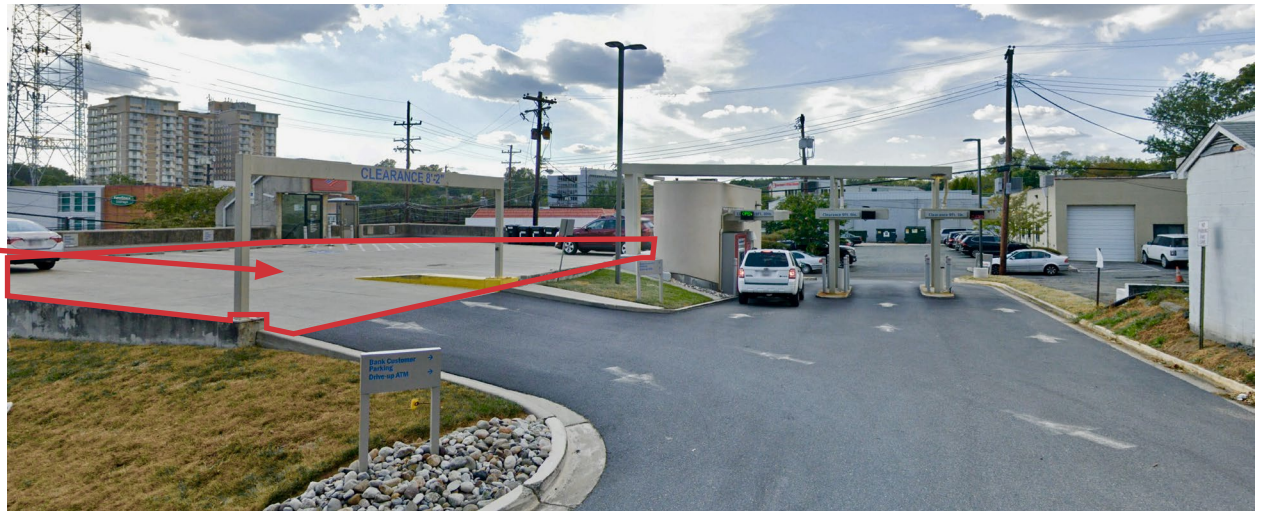
MATT SKALET
mskalet@klnb.com
202.420.7775

BEN BECKER
bbecker@klnb.com
202.420.7773





PARKING LOT



ROOFTOP SURFACE PARKING AND DRIVE-UP

5135 RIVER RD

MATT SKALET
mskalet@klnb.com
202.420.7775

BEN BECKER
bbecker@klnb.com
202.420.7773

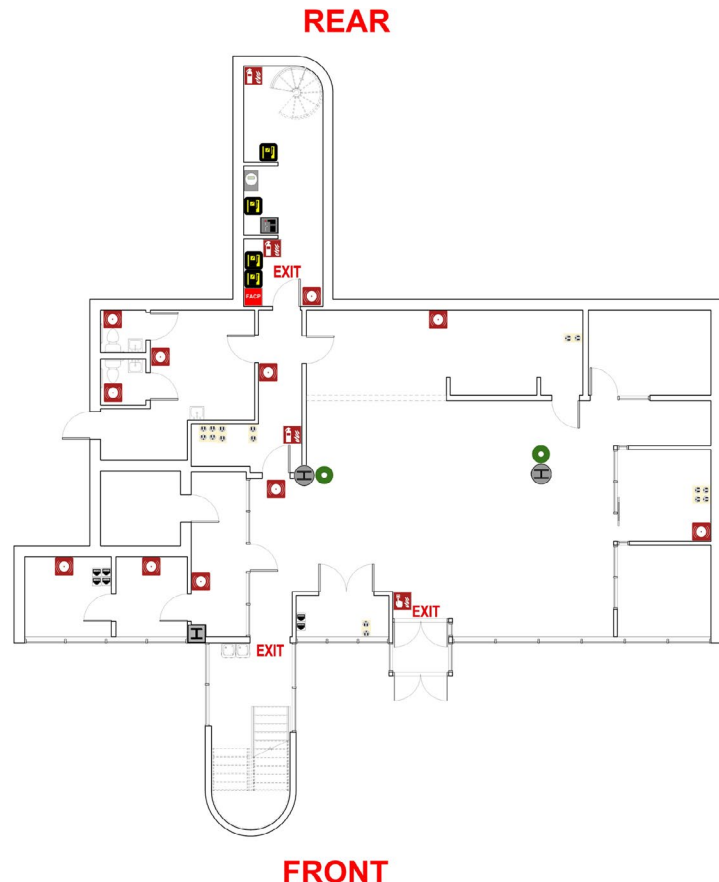
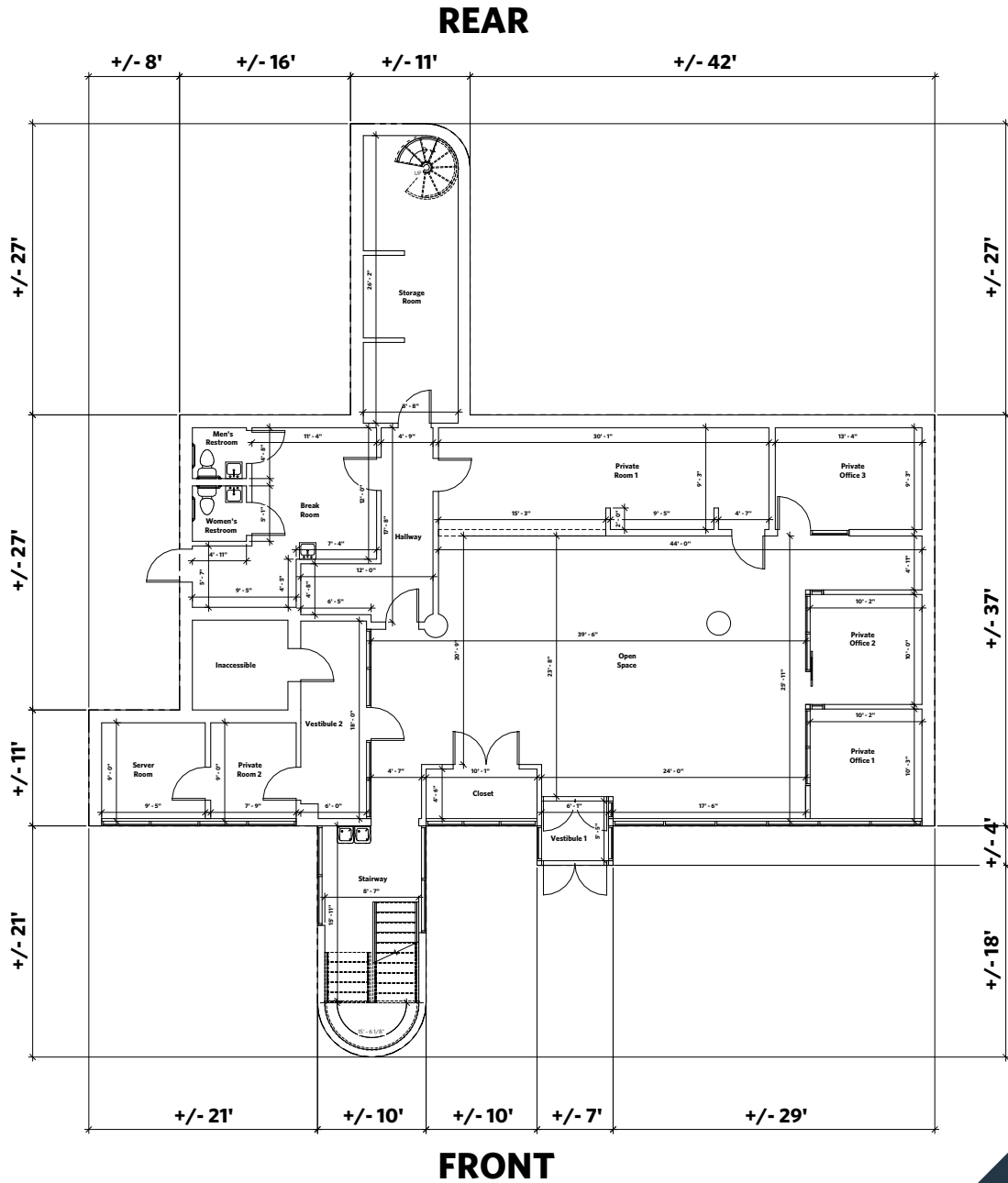


Unit # 5135
Ground Floor
+/- 3,160 SF

Total SF
+/- 3,507 SF

Width
+/- 77'

Depth
+/- 86'



[CLICK TO VIEW VIRTUAL TOUR](#)

SITE PLAN

A1 MAIN FLOOR

5135 RIVER RD

MATT SKALET
 mskalet@klnb.com
 202.420.7775

BEN BECKER
 bbecker@klnb.com
 202.420.7773





5135 RIVER RD
Bethesda, MD 20816

CONTACT

MATT SKALET
mskalet@klnb.com
202.420.7775

BEN BECKER
bbecker@klnb.com
202.420.7773

1130 Connecticut Avenue
STE 600
Washington, D.C. 20036

klnb.com

VISIT PROPERTY WEBSITE



While we have no reason to doubt the accuracy of any of the information supplied, we cannot, and do not, guarantee its accuracy. All information should be independently verified prior to a purchase or lease of the property. We are not responsible for errors, omissions, misuse, or misinterpretation of information contained herein and make no warranty of any kind, express or implied, with respect to the property or any other matters.

klnb.com