



## NEARBY RETAILERS

Walmart  **CARmax**<sup>®</sup>

**H MARTH** **LOTTE** PLAZA **market**

**DUNKIN'**  

## RETAIL FOR LEASE

- 2,215 SF and 2,215 SF Spaces Available
- Great visibility to Route 40
- End Cap Opportunity Available
- Located within close proximity to HMart, Lotte Plaza and Walmart

**ALEX SHEARER**

ashearer@klnb.com | 443-632-2081

**RYAN WILNER**

rwilner@klnb.com | 443-632-2058

**ANDY FELDMAN**

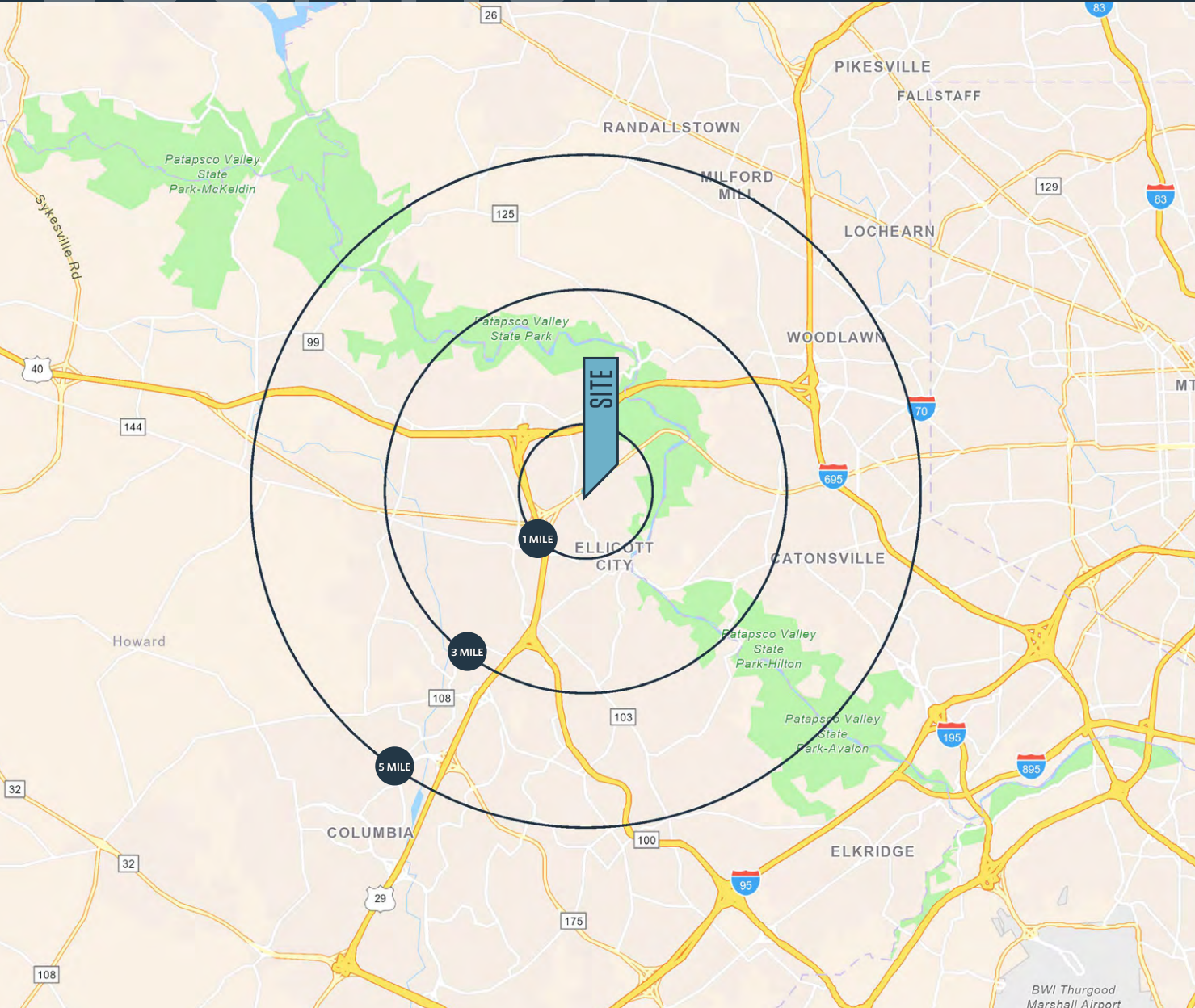
afeldman@klnb.com | 443-632-2053



# LOCATION

# ROGERS CENTER

8525 BALTIMORE NATIONAL PIKE, ELLICOTT CITY, MARYLAND 21043, BALTIMORE COUNTY



## DEMOGRAPHICS | 2022:

	1-MILE	3-MILE	5-MILE
Population	15,277	72,108	189,594
Daytime Population	16,068	61,598	179,850
Households	5,768	25,827	68,506
Average HH Income	\$125,833	\$171,178	\$161,674

[CLICK TO DOWNLOAD DEMOGRAPHIC REPORT](#)

## TRAFFIC COUNTS | 2021:

Baltimore National Pike	35,050 ADT
-------------------------	------------

**ALEX SHEARER**

ashearer@klnb.com | 443-632-2081

**RYAN WILNER**

rwilner@klnb.com | 443-632-2058

**ANDY FELDMAN**

afeldman@klnb.com | 443-632-2053





# MARKET

# ROGERS CENTER

8525 BALTIMORE NATIONAL PIKE, ELLICOTT CITY, MARYLAND 21043, BALTIMORE COUNTY



**ALEX SHEARER**

ashearer@klnb.com | 443-632-2081

**RYAN WILNER**

rwilner@klnb.com | 443-632-2058

**ANDY FELDMAN**

afeldman@klnb.com | 443-632-2053

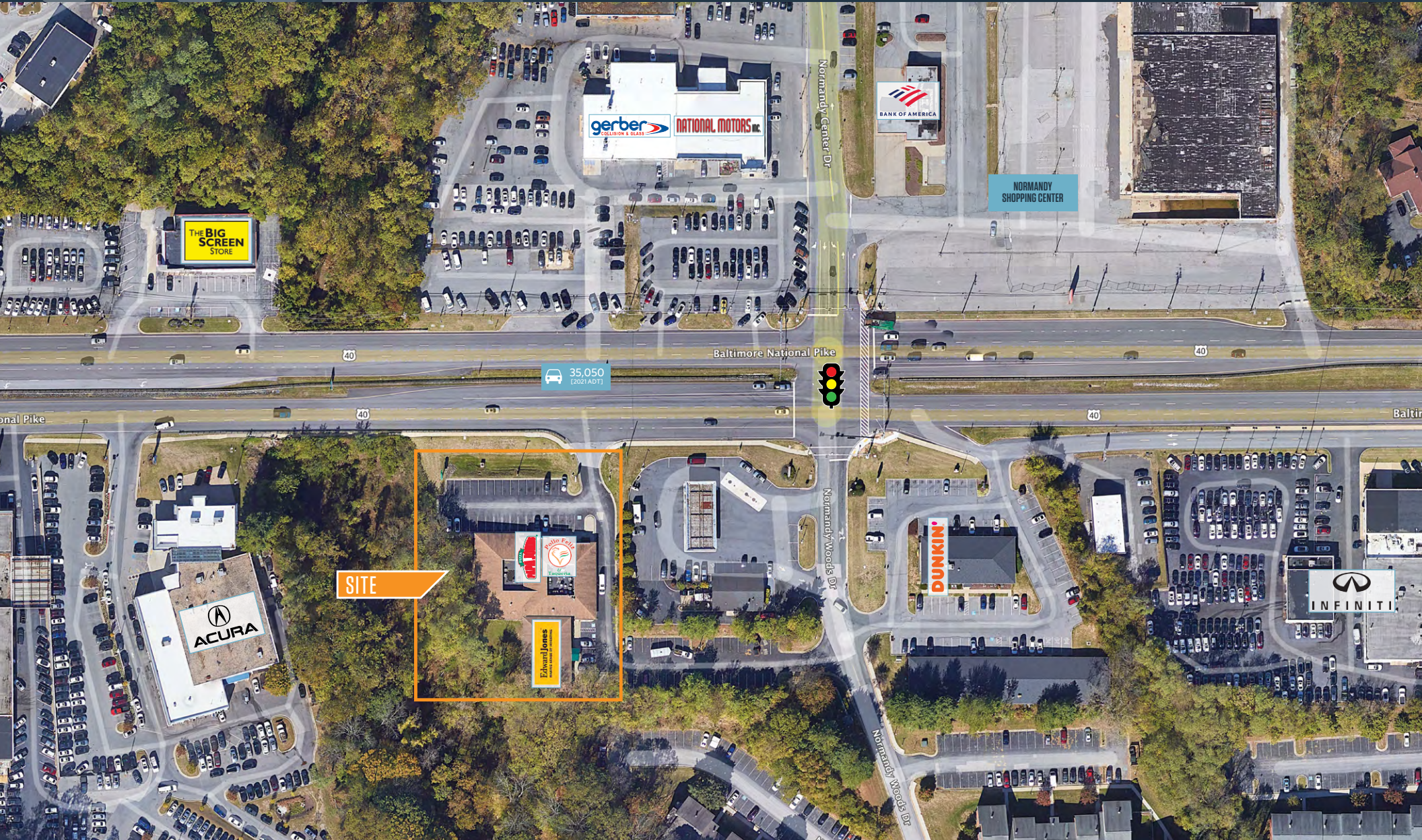




# CLOSE-UP

# ROGERS CENTER

8525 BALTIMORE NATIONAL PIKE, ELLICOTT CITY, MARYLAND 21043, BALTIMORE COUNTY



**ALEX SHEARER**

ashearer@klnb.com | 443-632-2081

**RYAN WILNER**

rwilner@klnb.com | 443-632-2058

**ANDY FELDMAN**

afeldman@klnb.com | 443-632-2053





# SITE PLAN

# ROGERS CENTER

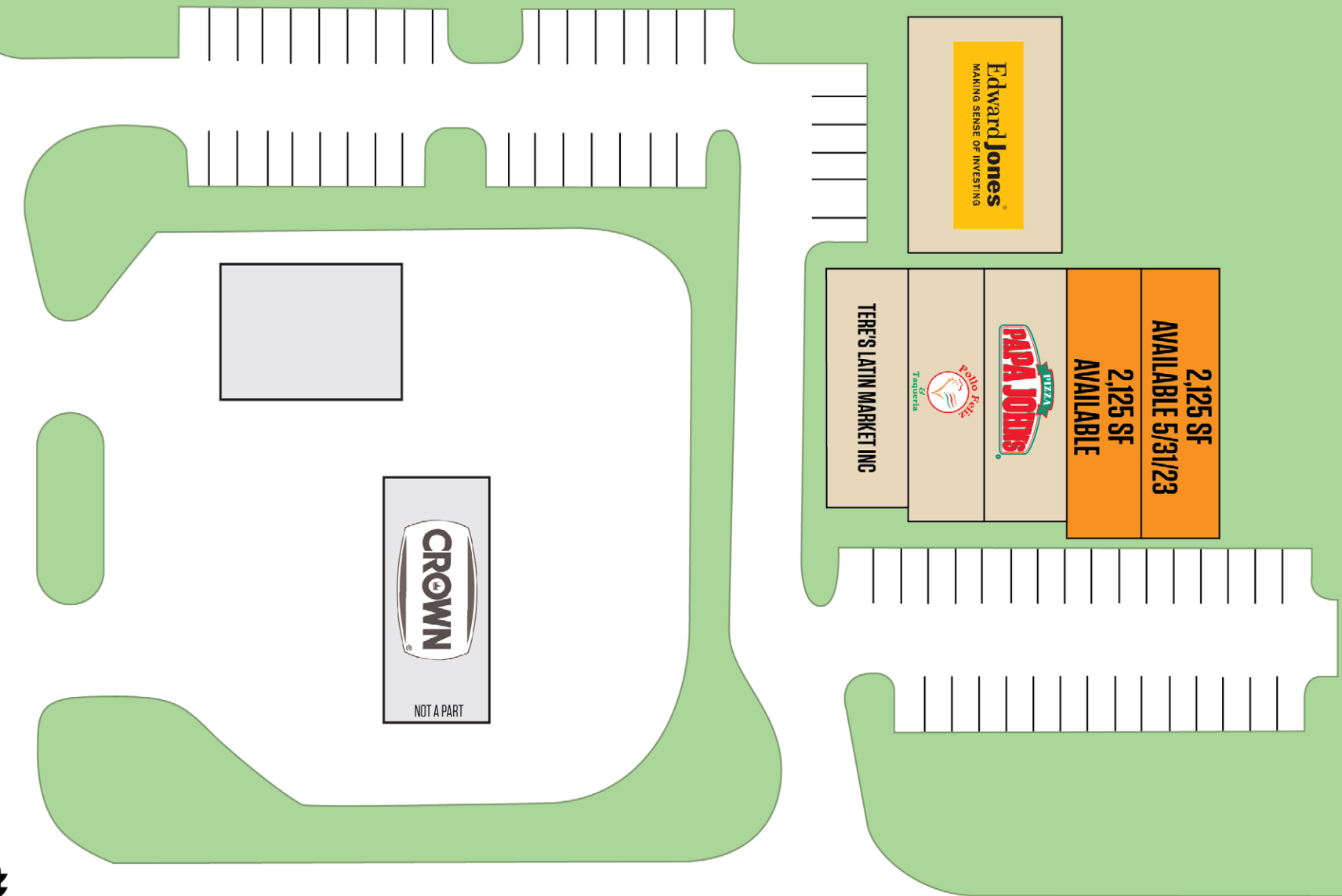
8525 BALTIMORE NATIONAL PIKE, ELLICOTT CITY, MARYLAND 21043, BALTIMORE COUNTY

NORMANDY WOODS DR



BALTIMORE NATIONAL PIKE

35,050  
[2021 ADT]



**ALEX SHEARER**  
ashearer@klnb.com | 443-632-2081

**RYAN WILNER**  
rwilner@klnb.com | 443-632-2058

**ANDY FELDMAN**  
afeldman@klnb.com | 443-632-2053



## FOR MORE INFORMATION, PLEASE CONTACT:

### ALEX SHEARER

ashearer@klnb.com  
443-632-2081

### RYAN WILNER

rwilner@klnb.com  
443-632-2058

### ANDY FELDMAN

afeldman@klnb.com  
443-632-2053

100 West Road, Suite 505, Towson, MD 21204

.....

## klnb.com

 [facebook.com/KLNBCRE](https://facebook.com/KLNBCRE)

 [@KLNBCRE](https://twitter.com/KLNBCRE)

 [linkedin.com/company/klnb](https://linkedin.com/company/klnb)

 [instagram.com/klnbcre](https://instagram.com/klnbcre)

**CLICK TO VIEW PROPERTY WEBSITE**

While we have no reason to doubt the accuracy of any of the information supplied, we cannot, and do not, guarantee its accuracy. All information should be independently verified prior to a purchase or lease of the property. We are not responsible for errors, omissions, misuse, or misinterpretation of information contained herein and make no warranty of any kind, express or implied, with respect to the property or any other matters.