

NOW UNDER CONSTRUCTION!  
2,875 SF & 3,961 SF AVAILABLE  
JOIN: calico

*the*  
**MERCURY**

AT WILDWOOD SHOPPING CENTER | BETHESDA, MD



MATT SKALET | 202-420-7775 | MSKALET@KLNb.COM  
BEN BECKER | 202-420-7773 | BBECKER@KLNb.COM

kl**nb**





## SITE DETAILS

- New mixed use project adjacent to Bethesda's high-end Wildwood
- 60 new apartments above 3 retail units totaling 10,093 SF
  - Space 1: 3,961 SF with Type 1 Restaurant Venting
  - Space 2: 2,875 SF with Type 1 Restaurant Venting
  - Space 3: 3,257 SF **calico** just signed!
- 60 dedicated retail garage parking spaces plus 114 common surface parking spaces
- Monument signage available on Old Georgetown Road
- Q4 2024 Delivery

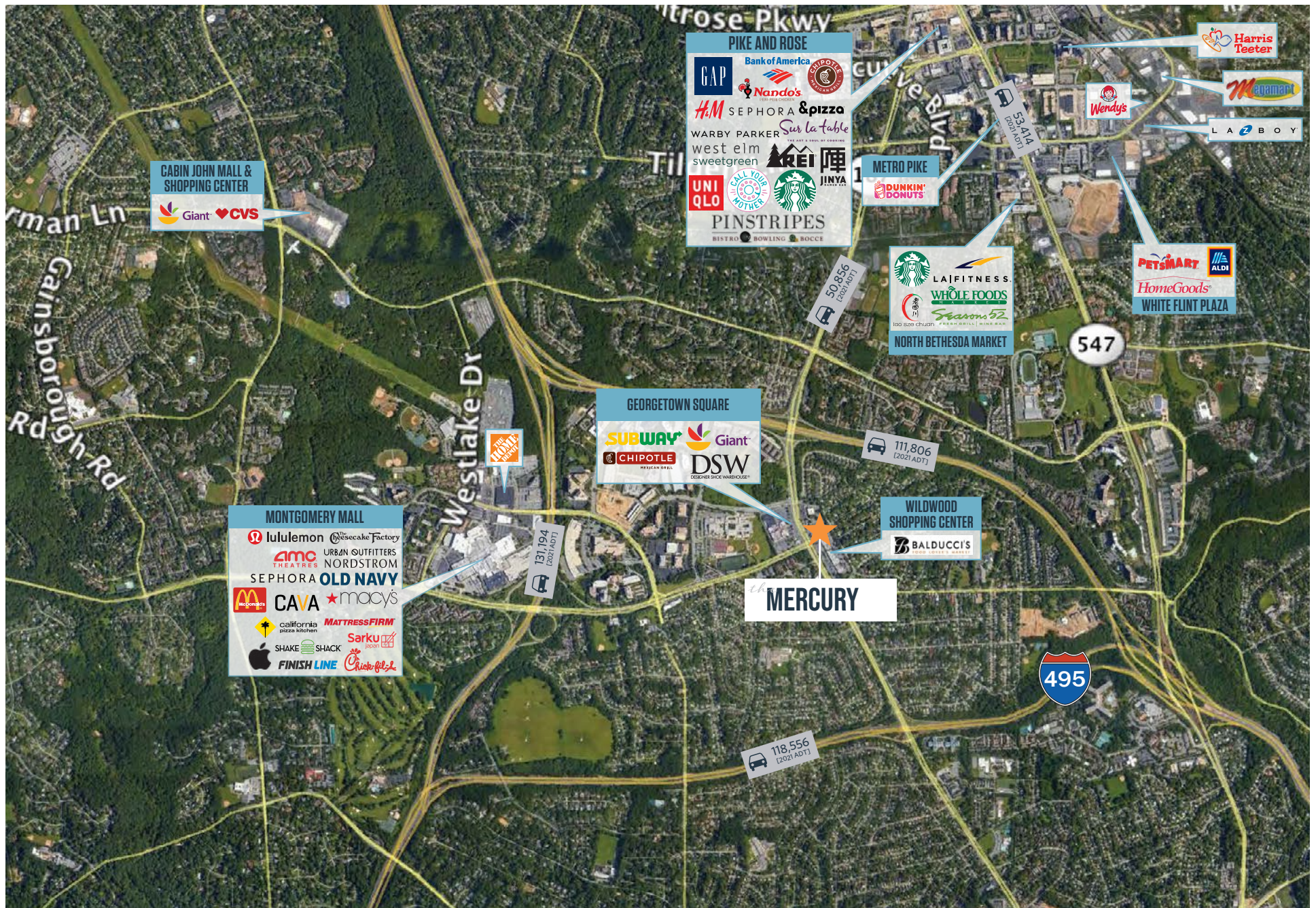
## 2022 DEMOGRAPHICS

	1 Mile	3 Mile	5 Mile	10 Min Drive
Average HH Income	\$218,017	\$214,466	\$210,328	\$225,318
Population	19,525	136,414	374,722	151,676
Daytime Population	24,882	187,454	429,100	217,438
Households	8,138	55,233	141,441	61,841
College Educated	78%	77%	69%	79%

## JOIN:

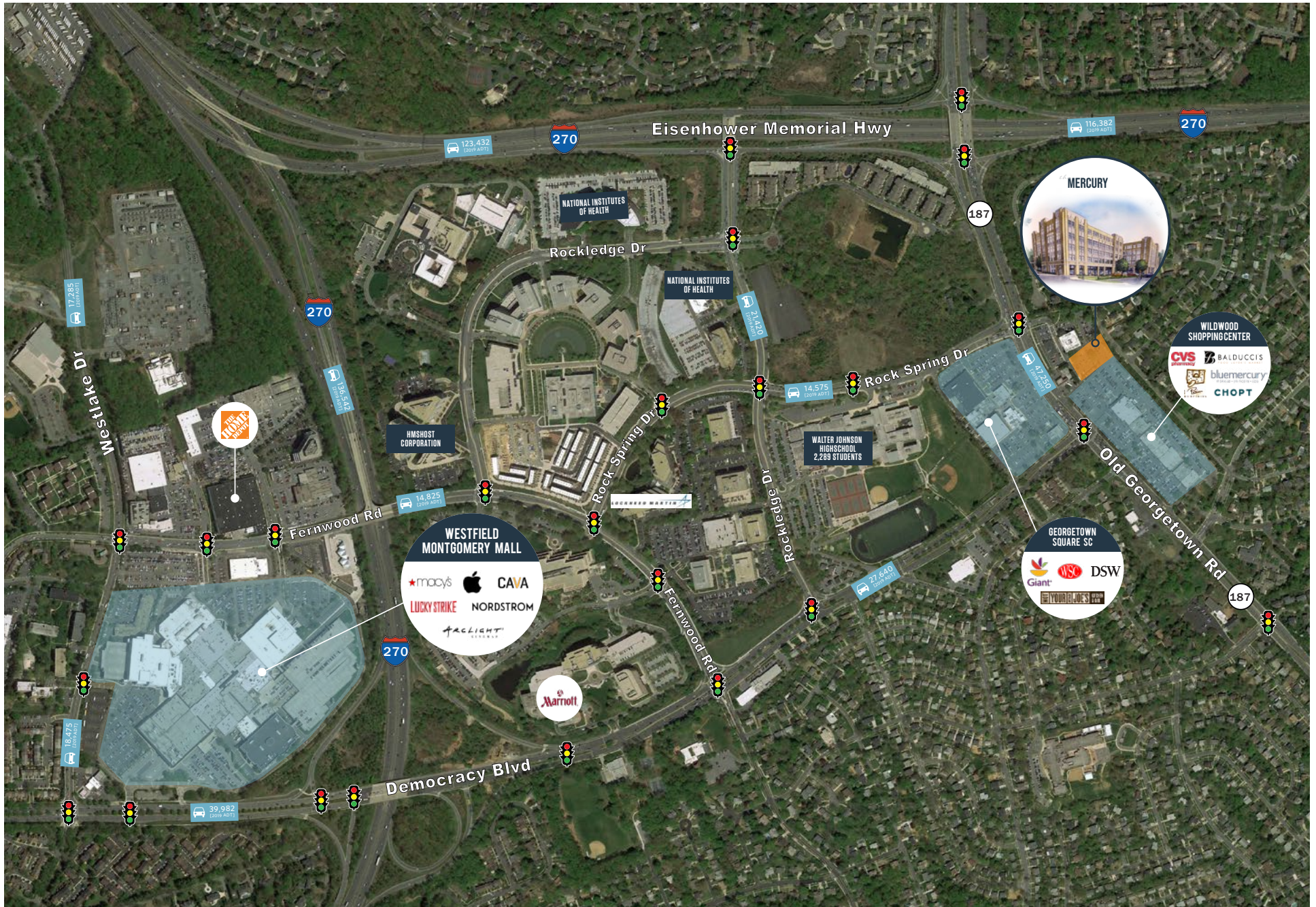








# the NEIGHBORHOOD





# the DEVELOPMENT



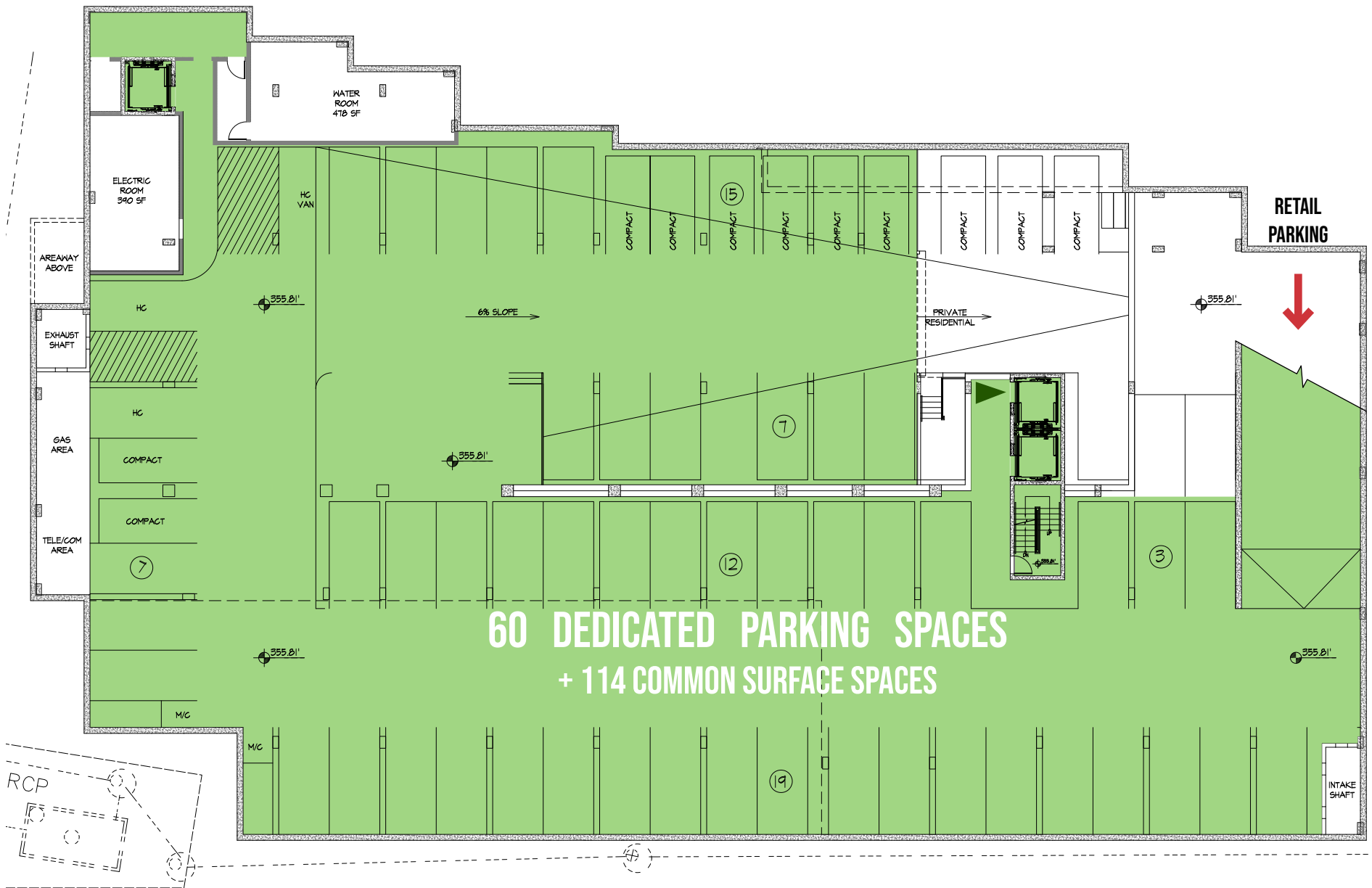
↑ OLD GEORGETOWN ROAD




BALDUCCI'S ↓



# the PARKING





# *the* **MERCURY**

AT WILDWOOD SHOPPING CENTER | BETHESDA, MD

**kl**n**b**

**MATT SKALET | 202-420-7775 | [MSKALET@KLNb.COM](mailto:MSKALET@KLNb.COM)**

**BEN BECKER | 202-420-7773 | [BBECKER@KLNb.COM](mailto:BBECKER@KLNb.COM)**

While we have no reason to doubt the accuracy of any of the information supplied, we cannot, and do not, guarantee its accuracy. All information should be independently verified prior to a purchase or lease of the property. We are not responsible for errors, omissions, misuse, or misinterpretation of information contained herein and make no warranty of any kind, express or implied, with respect to the property or any other matters