

QUEENSTOWN PREMIUM OUTLETS

441 Outlet Center Dr, Queenstown, MD 21658
Queen Anne's County



JOIN:



PROPERTY HIGHLIGHTS:

- 2.95 acres for sale at Simon's Queenstown Premium Outlets.
- Zoned RC [CLICK FOR ZONING INFORMATION](#)
- Ideal for retail, food services, daycare, gas, automotive uses, self storage, animal boarding, etc.
- Quick and easy access to Route 50 and Route 301.

OWNED BY:



Jake Levin
jlevin@klnb.com
202-909-6102

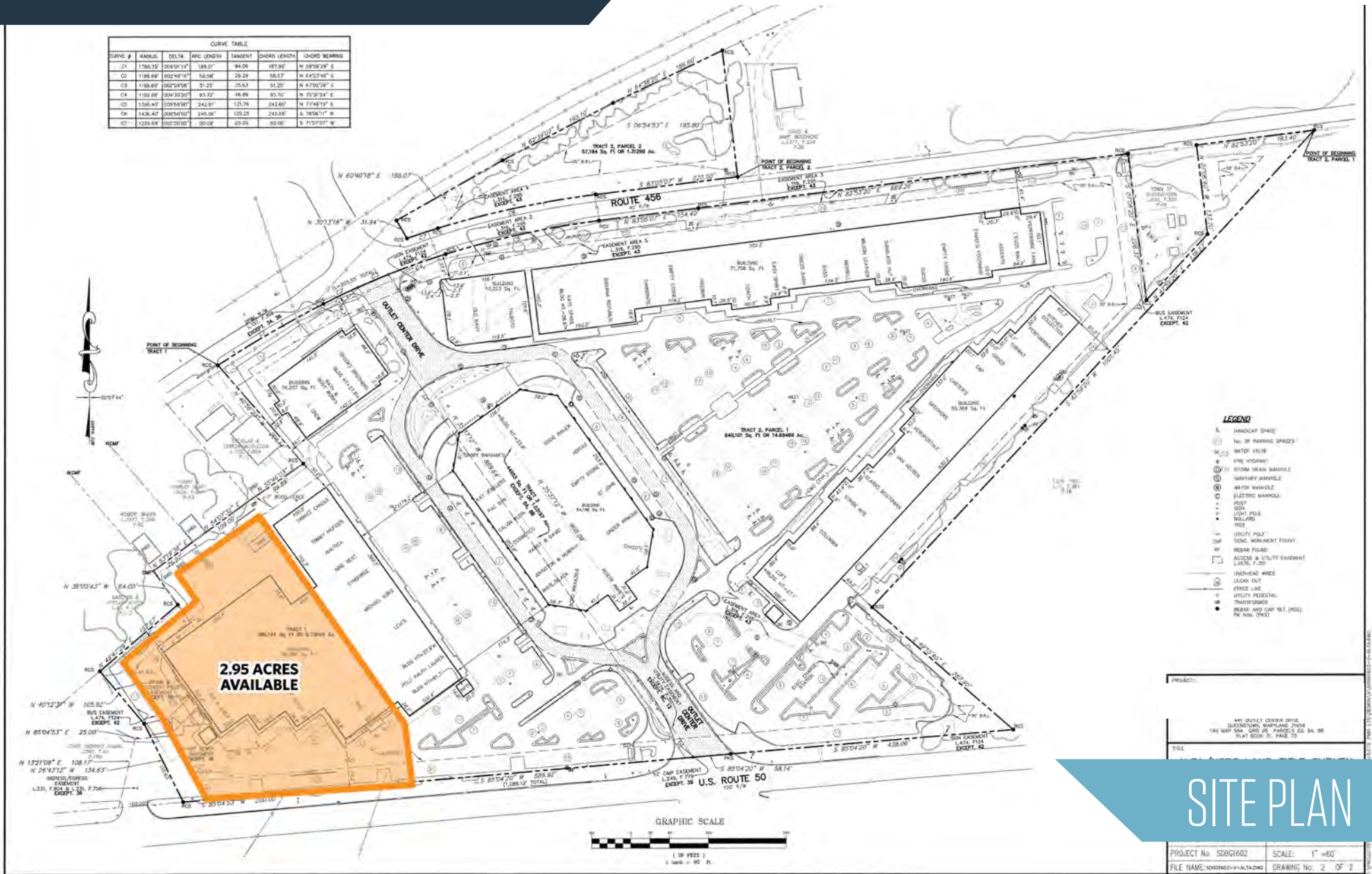
Dimitri Georgelakos
dgeorgelakos@klnb.com
703-268-2710

8065 Leesburg Pike, Suite 700
Tysons, VA 22182
klnb.com



QUEENSTOWN PREMIUM OUTLETS

441 Outlet Center Dr, Queenstown, MD 21658
Queen Anne's County



Jake Levin
jlevin@klnb.com
202-909-6102

Dimitri Georgelakos
dgeorgelakos@klnb.com
703-268-2710

8065 Leesburg Pike, Suite 700
Tysons, VA 22182
klnb.com

klnb

QUEENSTOWN PREMIUM OUTLETS

441 Outlet Center Dr, Queenstown, MD 21658
Queen Anne's County



Jake Levin
jlevin@klnb.com
202-909-6102

Dimitri Georgelakos
dgeorgelakos@klnb.com
703-268-2710

8065 Leesburg Pike, Suite 700
Tysons, VA 22182
klnb.com



QUEENSTOWN PREMIUM OUTLETS

441 Outlet Center Dr, Queenstown, MD 21658
Queen Anne's County



MARKET AERIAL

Jake Levin
jlevin@klnb.com
202-909-6102

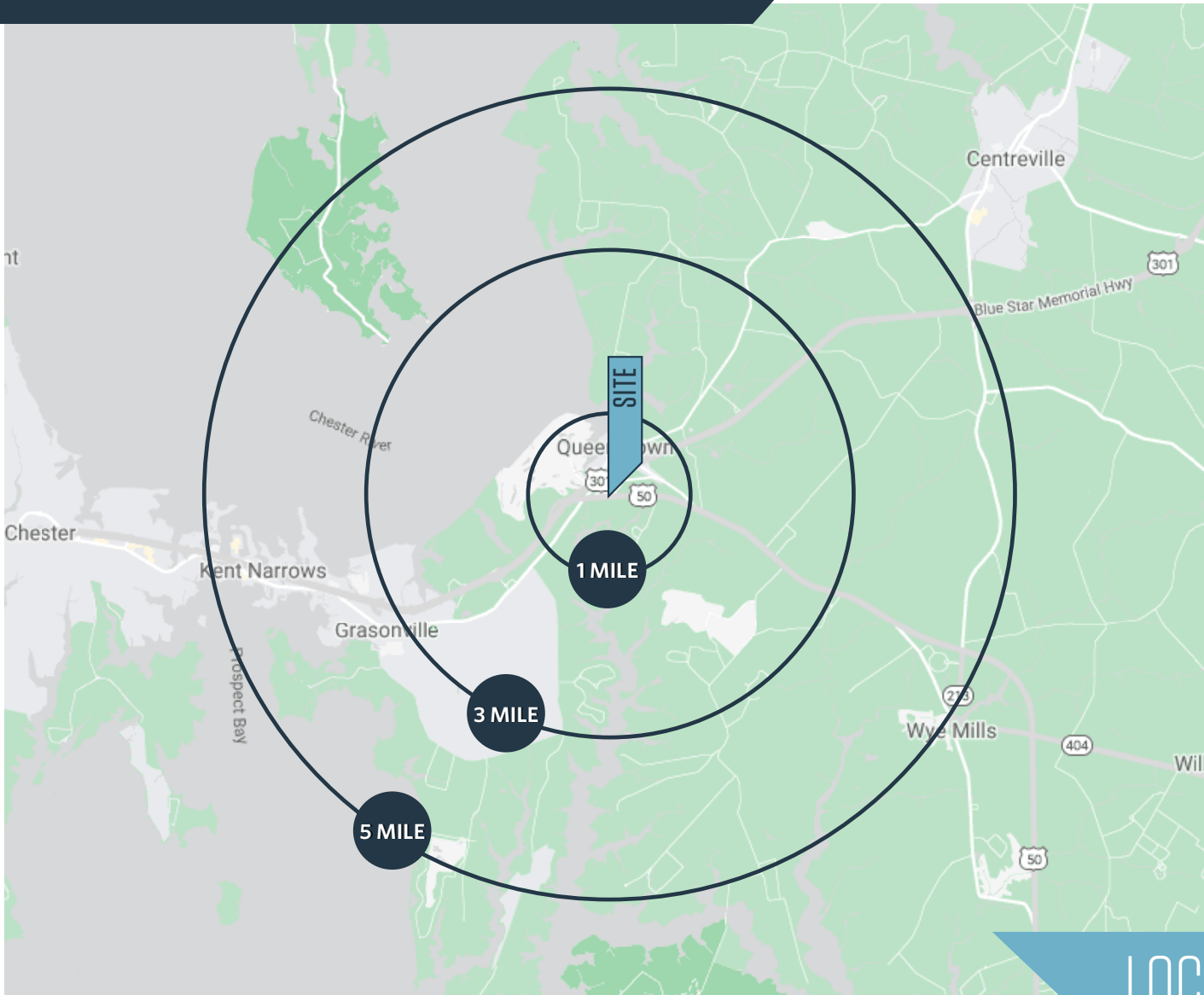
Dimitri Georgelakos
dgeorgelakos@klnb.com
703-268-2710

8065 Leesburg Pike, Suite 700
Tysons, VA 22182
klnb.com

klnb

QUEENSTOWN PREMIUM OUTLETS

441 Outlet Center Dr, Queenstown, MD 21658
Queen Anne's County



DEMOGRAPHICS | 2022:

	1-MILE	3-MILE	5-MILE
Population	852	3,699	8,384
Daytime Population	1,351	2,505	4,719
Households	322	1,433	3,261
Average HH Income	\$148,014	\$154,273	\$155,994
Median HH Income	\$119,290	\$115,889	\$115,802

[CLICK TO DOWNLOAD DEMOGRAPHIC REPORT](#)

TRAFFIC COUNTS | 2021:

Blue Star Memorial Hwy (Rt. 301)	27,410 ADT
Ocean Gateway (Rt. 50)	46,072 ADT

LOCATION & DEMOGRAPHICS

Jake Levin
jlevin@klnb.com
202-909-6102

Dimitri Georgelakos
dgeorgelakos@klnb.com
703-268-2710

8065 Leesburg Pike, Suite 700
Tysons, VA 22182
klnb.com



QUEENSTOWN PREMIUM OUTLETS

441 Outlet Center Dr, Queenstown, MD 21658
Queen Anne's County

CLICK TO VIEW PROPERTY WEBSITE

For More Information, Please Contact:

Jake Levin

jlevin@klnb.com

202-909-6102

Dimitri Georgelakos

dgeorgelakos@klnb.com

703-268-2710

8065 Leesburg Pike, Suite 700
Tysons, VA 22182

klnb.com

 facebook.com/KLNB

 [@KLNBCRE](https://twitter.com/KLNBCRE)

 linkedin.com/company/klnb

 instagram.com/klnbcre

While we have no reason to doubt the accuracy of any of the information supplied, we cannot, and do not, guarantee its accuracy. All information should be independently verified prior to a purchase or lease of the property. We are not responsible for errors, omissions, misuse, or misinterpretation of information contained herein and make no warranty of any kind, express or implied, with respect to the property or any other matters.

