



NEARBY RETAILERS



FREESTANDING RETAIL FOR LEASE

- Prime 3,000 SF 2nd Gen Restaurant Space Available.
- Direct Visibility and Access To Reisterstown Rd [22,934 ADT].
- Close Proximity to I-695 [177,903 ADT] and Multiple Grocery Anchored Centers.
- Located at a Signalized Intersection.
- Close Proximity to 2nd busiest Giant Food location in the chain [per Placer.ai].

MASON BERNSTEIN

mberstein@klnb.com | 443-632-2089

ALEX SHEARER

ashearer@klnb.com | 443-632-2081

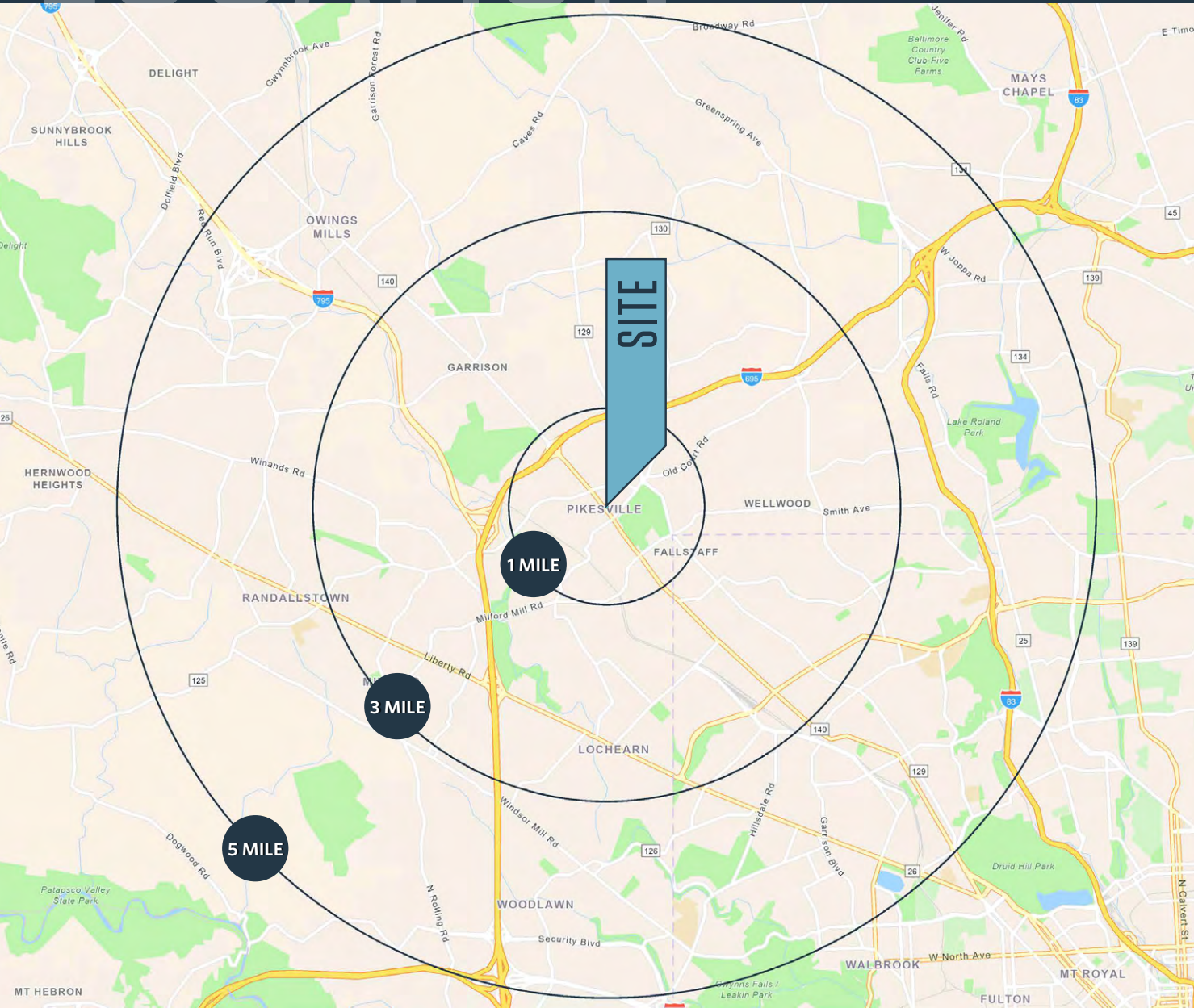
RYAN WILNER

rwilner@klnb.com | 443-632-2058

LOCATION

1317 REISTERSTOWN RD

PIKESVILLE, MD 21208, BALTIMORE COUNTY



PROPERTY HIGHLIGHTS:

- 3,000 SF Freestanding [Former Boston Market]
- Abundant Parking
- Prime Visibility and Access to Reisterstown Rd.

DEMOGRAPHICS | 2023:

1-MILE	3-MILE	5-MILE
Population		
9,733	115,315	264,251
Daytime Population		
13,559	107,232	268,327
Households		
4,472	46,400	107,065
Average HH Income		
\$104,838	\$108,982	\$109,032

[CLICK TO DOWNLOAD DEMOGRAPHIC REPORT](#)

TRAFFIC COUNTS | 2022:

Reisterstown Road 22,934 ADT

MASON BERNSTEIN

mberstein@klnb.com | 443-632-2089

ALEX SHEARER

ashearer@klnb.com | 443-632-2081

RYAN WILNER

rwilner@klnb.com | 443-632-2058



MARKET

1317 REISTERSTOWN RD

PIKESVILLE, MD 21208, BALTIMORE COUNTY



MASON BERNSTEIN

mberstein@klnb.com | 443-632-2089

ALEX SHEARER

ashearer@klnb.com | 443-632-2081

RYAN WILNER

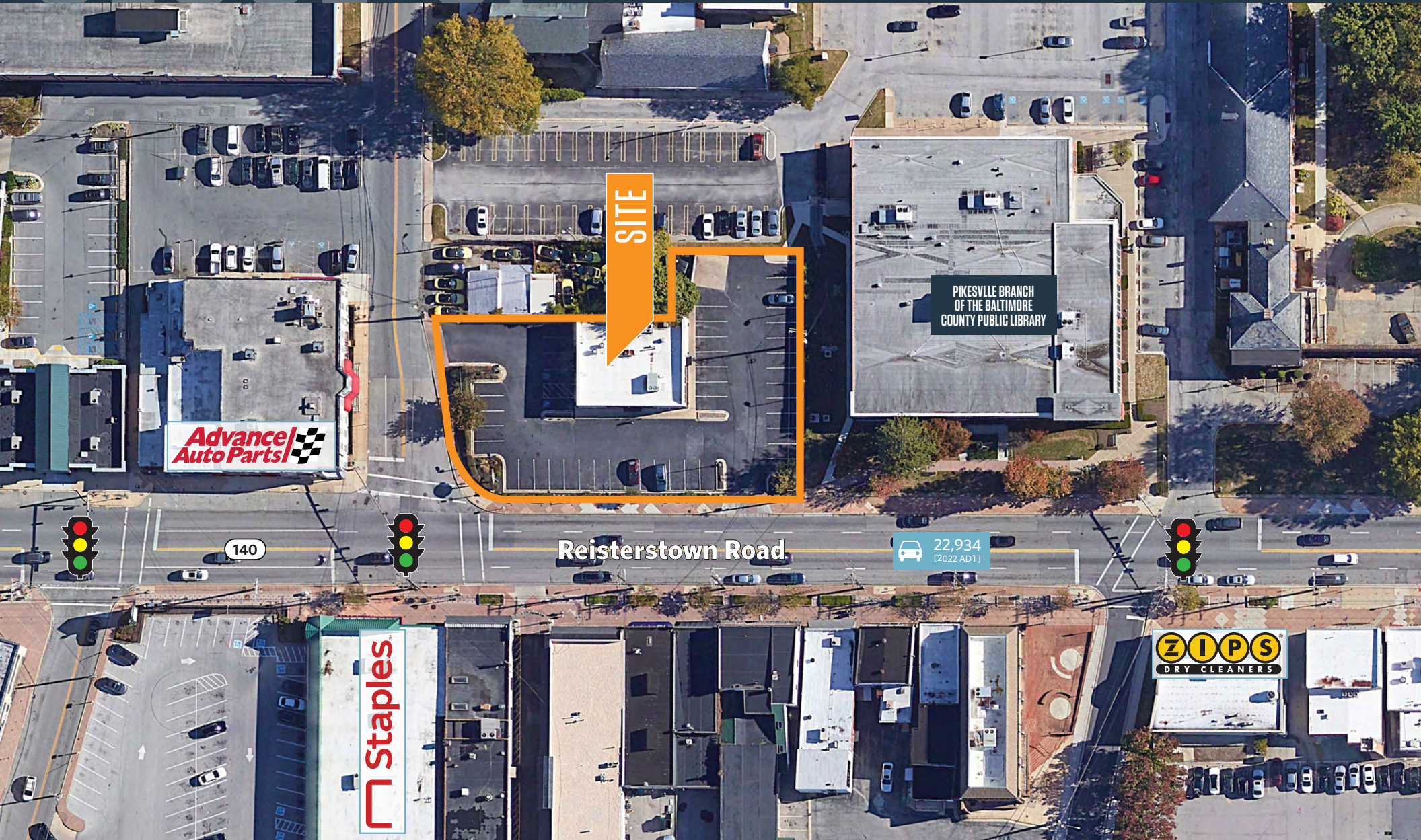
rwilner@klnb.com | 443-632-2058



CLOSE-UP

1317 REISTERSTOWN RD

PIKESVILLE, MD 21208, BALTIMORE COUNTY



SITE

PIKESVILLE BRANCH
OF THE BALTIMORE
COUNTY PUBLIC LIBRARY

Advance
Auto Parts

140

Reisterstown Road

22,934
[2022 ADT]

Staples

ZIPS
DRY CLEANERS

MASON BERNSTEIN

mberstein@klnb.com | 443-632-2089

ALEX SHEARER

ashearer@klnb.com | 443-632-2081

RYAN WILNER

rwilner@klnb.com | 443-632-2058

klnb



1317 REISTERSTOWN RD

PIKESVILLE, MD 21208, BALTIMORE COUNTY

FOR MORE INFORMATION, PLEASE CONTACT:

MASON BERSTEIN

mberstein@klnb.com
443-632-2089

ALEX SHEARER

ashearer@klnb.com
443-632-2081

RYAN WILNER

rwilner@klnb.com
443-632-2058

100 West Road, Suite 505, Towson, MD 21204

.....

klnb.com

 facebook.com/KLNBCRE

 [@KLNBCRE](https://twitter.com/KLNBCRE)

 linkedin.com/company/klnb

 instagram.com/klnbcre

CLICK TO VIEW PROPERTY WEBSITE

While we have no reason to doubt the accuracy of any of the information supplied, we cannot, and do not, guarantee its accuracy. All information should be independently verified prior to a purchase or lease of the property. We are not responsible for errors, omissions, misuse, or misinterpretation of information contained herein and make no warranty of any kind, express or implied, with respect to the property or any other matters.